



Manuals.plus /

› YOLENY /

› YOLENY 10'x12' Hardtop Gazebo Instruction Manual

## YOLENY 10'x12' Hardtop Gazebo

# YOLENY 10'x12' Hardtop Gazebo Instruction Manual

Model: 10'x12' Hardtop Gazebo

Brand: YOLENY

## 1. INTRODUCTION AND OVERVIEW

---

Thank you for choosing the YOLENY 10'x12' Hardtop Gazebo. This outdoor pavilion is designed to enhance your garden, patio, or lawn area, providing a comfortable and shaded space for relaxation and entertainment. It features a durable polycarbonate roof, a robust aluminum frame, and integrated curtains and netting for versatile use.

The gazebo measures 12' L x 10' W x 8.7' H, offering approximately 120 square feet of coverage, spacious enough to accommodate 5 to 8 people. Its construction is designed for lasting durability and stability in various weather conditions.



Figure 1: YOLENY 10'x12' Hardtop Gazebo installed in a backyard patio area with outdoor furniture.

## 2. SAFETY INFORMATION

---

- Read all instructions carefully before assembly and use.
- Assembly requires 2 to 3 adults. Ensure a clear and level area for installation.
- Always check local snow and wind load ratings and ensure proper installation for stability.
- The polycarbonate roof blocks UV rays but does not prevent high temperatures or strong light from passing through.
- Ensure proper installation for waterproofing to prevent leaks.
- Clear snow from the roof promptly to prevent structural damage.

## 3. PACKAGE CONTENTS

---

Your YOLENY Hardtop Gazebo package includes all necessary hardware and a detailed installation manual. Key components typically include:

- Aluminum Frame Components (powder-coated)
- Polycarbonate Roof Panels
- Mesh Curtains with Zippers
- Privacy Curtains
- Ceiling Hooks
- Fasteners and Tools (e.g., screws, wrench)
- Expansion Screws for Concrete Floors

*Note: If installing on wood floors, buyers need to purchase wood panel-specific expansion screws separately.*

## 4. SETUP AND ASSEMBLY

---

Assembly of the YOLENY Hardtop Gazebo typically requires 2 to 3 people and takes approximately 5 hours. Follow the pictorial instructions in the provided manual carefully.

### 4.1 Key Assembly Tips:

- **Study Instructions:** Review all diagrams and steps before beginning.
- **Organize Parts:** Lay out all parts alphabetically or by type, but keep roof panels in their boxes until needed to prevent damage.
- **Teamwork:** While the manual suggests three people, two adults can often manage, especially if working at a steady pace.
- **Tool Use:** A power tool can expedite tightening screws. Keep a wrench and a rubber mallet handy for minor adjustments if holes don't perfectly align or metal needs slight bending. A screwdriver can assist in aligning holes.
- **Roof Panels:** Install roof panels exactly as shown in the diagrams.
- **Stability:** Utilize two step ladders and three saw horses for easier and safer assembly, particularly for the roof structure.
- **Anchoring:** Securely bolt the gazebo to your chosen surface (concrete or wood) using the provided or appropriate expansion screws to ensure long-term stability against wind.

# Dimensions of Gazebo

Create a safe and comfortable outdoor retreat for your family and children.

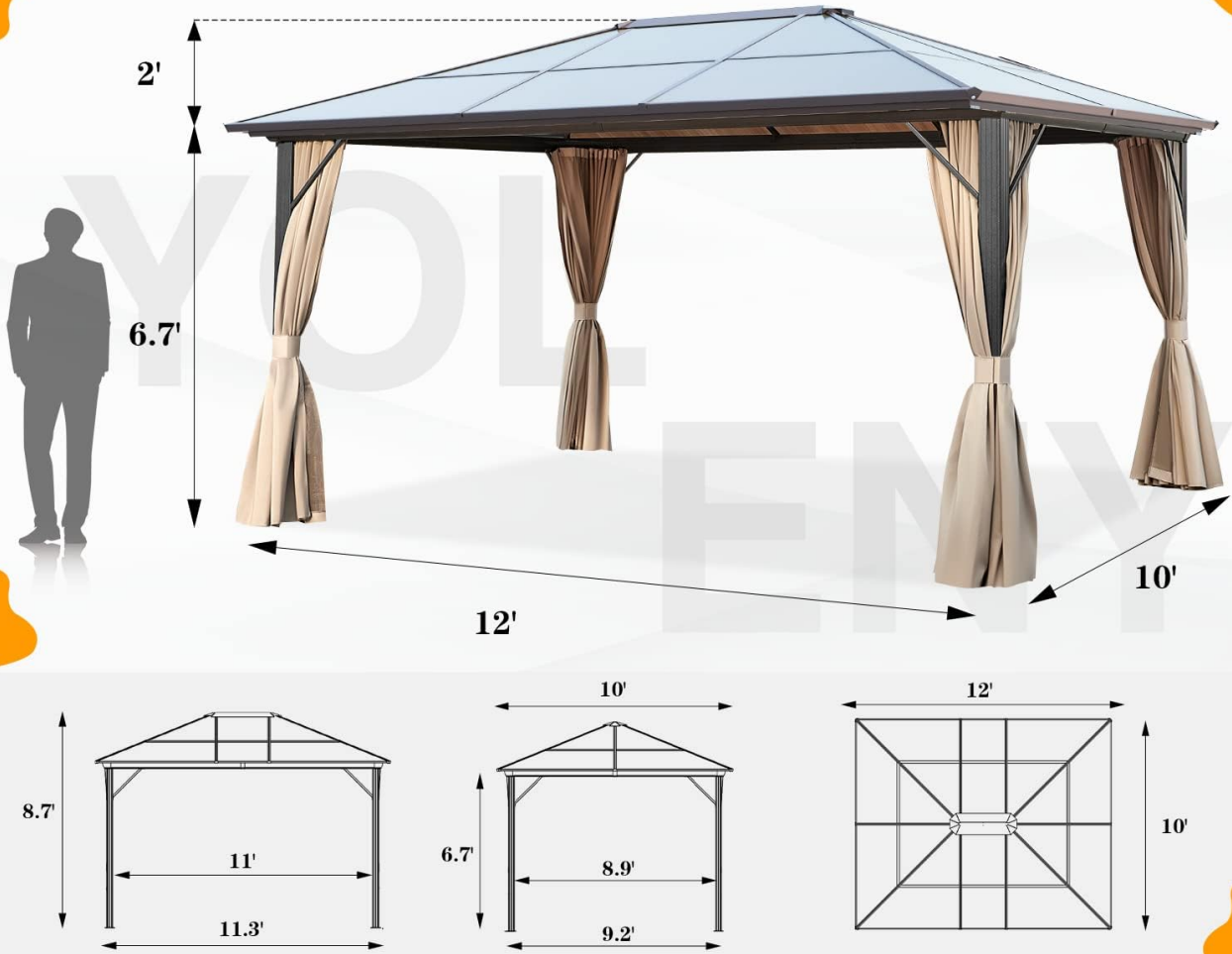


Figure 2: Gazebo Dimensions



● YOLENY

## Product Details

Create a safe and comfortable outdoor retreat for your family and children.



Strong and stable



Triangular Structure



Corrosion Protection



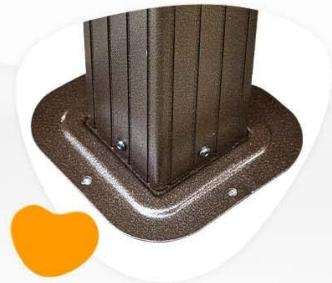
### TRIANGULAR DESIGN

Enhances the stability of the gazebo



### ALUMINUM FRAME

Improved durability and stability



### RUST-PROOF COLUMN

Ensure corrosion resistance

Figure 3: Product Details - Frame and Column Construction



### Sturdy Poles and Stands

Feet with holes and ground stakes for added stability, 4 corners reinforced for extra durability.

Figure 4: Sturdy Poles and Stands for Anchoring

## 4.2 Assembly Videos:

Video 1: YOLENY Best Polycarbonate Hardtop Roof Gazebo (Seller Video) - Provides an overview of the gazebo's features and design.

Video 2: 12'x16' Hardtop Gazebo tour and what to know about assembly (Influencer Video) - Offers insights into the assembly process and tips for installation.

Video 3: See an ACTUAL FULL VIEW of this YOLENY Gazebo AFTER SETUP! (Influencer Video) - Shows the fully assembled gazebo from various angles.

Video 4: Important Information | WATCH THIS BEFORE U BUY THIS GAZEBO (Influencer Video) - Provides critical information and considerations before purchasing and assembling.

## 5. OPERATING INSTRUCTIONS

---

### 5.1 Curtains and Netting:

The gazebo features a dual-track system for its curtains and netting, allowing for flexible use:

- **Privacy Curtains:** The removable privacy curtains offer UV and rain protection, allowing you to create a secluded space.
- **Mesh Curtains:** The equipped mesh curtains with zippers provide good ventilation while keeping insects out.
- Both curtain types can be easily slid open or closed along the dual tracks. When not in use, they can be tied back to the gazebo posts.



● YOLENY

## Inner Polyester Nettings



Keep out of



Full airflow

● YOLENY

## Outer Privacy Curtains



Block the wind



Dust-proof



Keep warm



Figure 5: Inner Netting and Outer Privacy Curtains

### 5.2 Ceiling Hooks:

The integrated ceiling hooks provide convenience for hanging additional lights or a fan, allowing you to customize your gazebo's ambiance and comfort.

# HOOKS FOR

1. light
2. fan



Figure 6: Ceiling Hooks for Accessories

## 5.3 Operation Videos:

Video 5: This has both a mosquito net and a zip up walls! (Influencer Video) - Demonstrates the functionality of the dual curtains and netting system.

## 6. MAINTENANCE

- **Cleaning:** Regularly clean the aluminum frame and polycarbonate roof panels with mild soap and water. Avoid abrasive cleaners that could damage the finish.
- **Fabric Care:** Curtains and netting can be spot cleaned with mild detergent. Ensure they are completely dry before storing or tying back for extended periods to prevent mildew.
- **Snow Removal:** In snowy conditions, promptly clear accumulated snow from the roof to prevent excessive weight and potential structural damage.
- **Seasonal Inspection:** Periodically inspect all fasteners and connections to ensure they remain tight and secure.



Figure 7: Gazebo in Winter and Summer Conditions

## 7. TROUBLESHOOTING

---

- **Stability Issues:** Ensure the gazebo is properly anchored to a solid surface using appropriate screws. Check all frame connections for tightness.
- **Water Leaks:** Verify that all roof panels are correctly installed and sealed according to the manual. Ensure proper waterproofing during assembly.
- **Curtain/Netting Snags:** Inspect the dual-track system for any obstructions. Ensure curtains and netting are free of debris when sliding.
- **Heat Buildup:** The polycarbonate roof blocks UV rays but may still allow significant heat. Utilize the mesh curtains for ventilation and consider adding a fan to the ceiling hooks for improved airflow.

## 8. SPECIFICATIONS

---

Attribute	Detail
Brand	YOLENY
Model	10'x12' Hardtop Gazebo
Material	Alloy Steel, Aluminum, Polycarbonate, Polyester
Frame Material	Powder-coated Aluminum
Roof Type	Polycarbonate, Single Roof
Color	Brown Roof, Brown Aluminum Frame
Product Dimensions	144 x 120 x 104.4 inches (12' L x 10' W x 8.7' H)
Floor Area	Approx. 120 Square Feet
Item Weight	144 Pounds
Water Resistance Level	Water Resistant
Ultraviolet Light Protection	True
Assembly Required	Yes (2-3 people, approx. 5 hours)

## 9. WARRANTY AND SUPPORT

---

Your YOLENY 10'x12' Hardtop Gazebo is eligible for a 30-day refund/replacement return policy. For any questions regarding product warranty, missing parts, or technical support, please contact YOLENY customer service directly. Contact information can typically be found in your product packaging or on the YOLENY brand store page.