

## JSAUX BG0102

# JSAUX Carrying Case for Steam Deck/Steam Deck OLED Instruction Manual

Model: BG0102

## PRODUCT OVERVIEW

The JSAUX BG0102 Carrying Case is specifically designed to provide protective storage and portability for your Steam Deck or Steam Deck OLED console and its essential accessories. This hard shell case ensures your device is safe from impacts and scratches during transport and storage.



Image: The JSAUX BG0102 Carrying Case, open to display the Steam Deck console securely nestled on one side, and dedicated compartments for accessories like a charger, power bank, and earbuds on the other. A mesh pocket and SD card slots are also visible.

## KEY FEATURES

- **Compatibility:** Specifically designed for Steam Deck and Steam Deck OLED. *Note: Not compatible with ROG Ally / ROG Ally X.*
- **Large Storage Capacity:** Features an upgraded storage space (Dimensions: 6.3"×4.33"×1.3") capable of accommodating the original AC charger, a small power bank, earphones, and other accessories. Includes a mesh pocket and card slots for small items like SD cards and charging cables.
- **Multiple Protection Layers:** Constructed with a thickened EVA hard shell to resist external extrusion, preventing collisions and falls. A groove design ensures the joysticks are not pressed, and a built-in fleece compartment protects the screen from scratches.
- **Portable Design:** Equipped with a reinforced handle for easy carrying. The middle compartment can be folded to function as a desktop stand, allowing for gameplay with a separate controller. Velcro straps inside secure the console in place.



# Multiple Storage Spaces

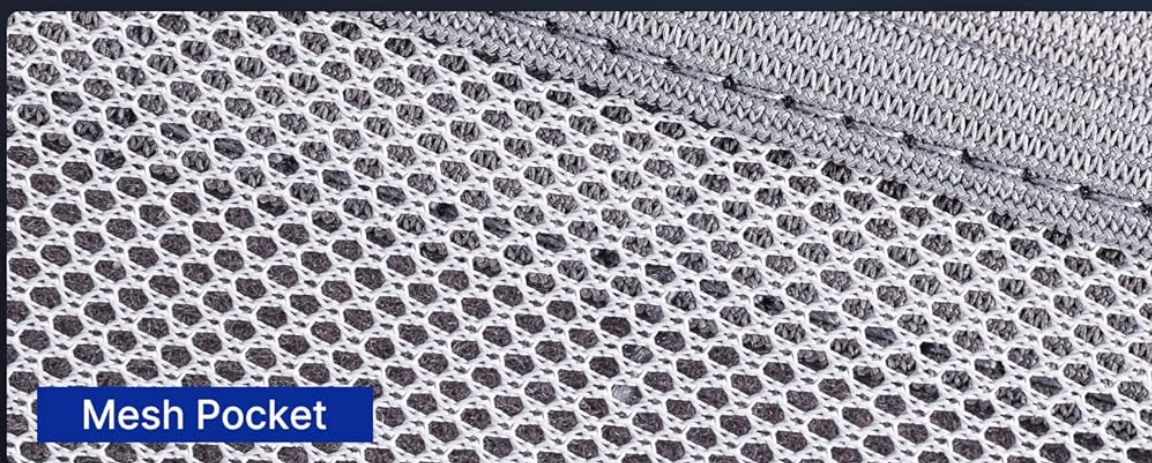


Image: A detailed view of the case's interior, showcasing the dedicated groove space for the console, a mesh pocket for cables, and individual slots for SD cards, illustrating the multiple storage options.



# Innovative Stand Design

Place the steam deck and enjoy your game



Image: The JSAUX Carrying Case demonstrating its innovative stand design. The Steam Deck is placed on the folded middle compartment, elevating it for comfortable viewing during gameplay with an external controller.

## SETUP AND USAGE

### Inserting Your Steam Deck

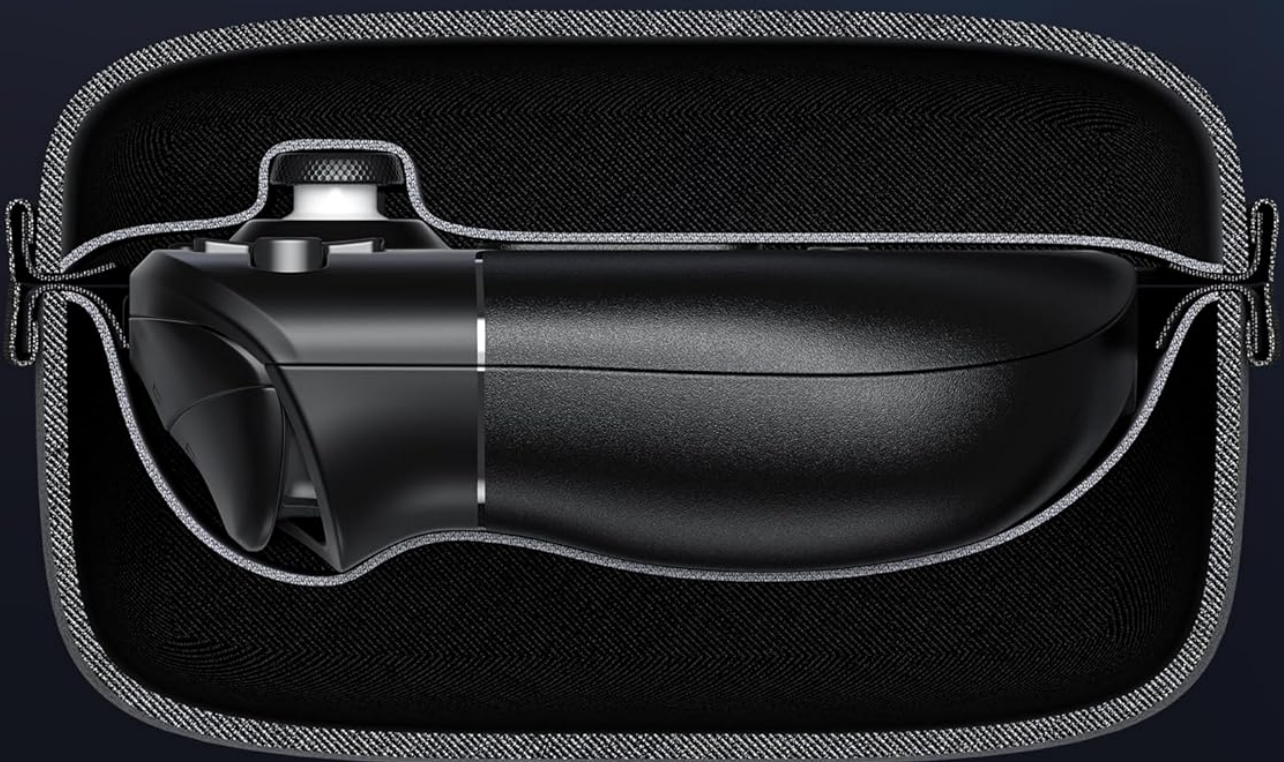
1. Open the JSAUX Carrying Case by unzipping both zippers completely.



2. Carefully place your Steam Deck or Steam Deck OLED into the molded compartment on one side of the case. Ensure the console sits snugly within the dedicated groove, which is designed to prevent pressure on the joysticks.
3. Secure the Steam Deck using the internal Velcro straps to prevent movement during transit.

# Design for Steam Deck

Fits the structural design of the Steam Deck  
without pressing the joystick



**⚠ Note: Not compatible with ROG Ally / ROG Ally X (2024)**

Image: A close-up view of the case's interior, highlighting the precisely molded groove designed to accommodate the Steam Deck's joysticks without applying pressure, ensuring their protection.

## Storing Accessories

- Utilize the large storage space on the opposite side of the case for bulkier accessories such as the original AC charger, a small power bank, or earphones.
- Smaller items like SD cards can be placed in the dedicated card slots, and charging cables or other small flat items can be stored in the mesh pocket.

## Using as a Desktop Stand

1. With the Steam Deck securely in place, fold the middle compartment of the case to create a stable desktop stand.
2. Position your Steam Deck on this stand for an elevated viewing angle, ideal for playing with an external controller.

## MAINTENANCE

To ensure the longevity and continued protection offered by your JSAUX Carrying Case, follow these simple maintenance guidelines:

- **Cleaning:** Wipe the exterior of the case with a soft, damp cloth. For stubborn dirt, a mild soap solution can be used, followed by wiping with a clean, damp cloth. Allow to air dry completely before closing or storing.
- **Interior Care:** The fleece lining can be gently vacuumed or wiped with a lint-free cloth to remove dust and debris. Avoid using harsh chemicals or abrasive cleaners on any part of the case.
- **Storage:** Store the case in a cool, dry place away from direct sunlight and extreme temperatures when not in use.
- **Zipper Care:** Periodically check the zippers for any debris and ensure they operate smoothly. If they become stiff, a small amount of zipper lubricant can be applied.

## TROUBLESHOOTING

If you encounter any issues with your JSAUX Carrying Case, consider the following:

- **Console Does Not Fit:**
  - Ensure you have a Steam Deck or Steam Deck OLED. This case (BG0102) is not designed for other consoles like the ROG Ally.
  - Verify that no accessories are obstructing the console's placement within its designated groove.
- **Zippers Are Sticking:**
  - Check for any fabric or debris caught in the zipper teeth. Gently remove any obstructions.
  - Apply a small amount of zipper lubricant (e.g., beeswax, silicone spray) to the teeth and work the zipper back and forth.
- **Case Deformed/Damaged:**
  - While the case is designed for strong impact resistance, extreme force or prolonged heavy pressure can cause deformation. Inspect for visible damage.
  - If the case is significantly damaged and no longer provides adequate protection, replacement is recommended.

Image: An illustration depicting the superior impact resistance of the JSAUX case, showing how its thickened EVA hard shell withstands pressure compared to a standard case that deforms easily.

## SPECIFICATIONS

Attribute	Detail
Product Dimensions	6.3 x 4.33 x 1.3 inches (internal storage space)
Item Weight	1.68 pounds
Model Number	BG0102
Compatibility	Steam Deck / Steam Deck OLED
Material	Thickened EVA hard shell, fleece lining

## WARRANTY AND SUPPORT

JSAUX products are manufactured with quality and durability in mind. For specific warranty information and customer support, please refer to the official JSAUX website or contact their customer service directly. Keep your purchase receipt as proof of purchase for any warranty claims. For further assistance, visit the [JSAUX Store on Amazon](#).

