

[Manuals.plus](#) /

> [SwitchBot](#) /

> SwitchBot LED Ceiling Light Pro (W2612220) - 8 Tatami Model User Manual

## SwitchBot W2612220

# SwitchBot LED Ceiling Light Pro (W2612220) - 8 Tatami Model User Manual

Model: W2612220

## 1. INTRODUCTION

---

Thank you for purchasing the SwitchBot LED Ceiling Light Pro. This smart lighting fixture offers advanced features including stepless dimming and color temperature adjustment, integrated smart remote control for other infrared appliances, and voice control compatibility. This manual provides essential information for safe installation, operation, and maintenance of your device.



*The SwitchBot LED Ceiling Light Pro, a white circular fixture, seamlessly integrated into a modern ceiling.*

## 2. PACKAGE CONTENTS

Please check that all items are present in the package:

- Main Unit (Ceiling Light) x 1
- Lampshade x 1
- Dedicated Mounting Adapter x 1
- Remote Control x 1
- AAA Dry Batteries x 2 (for remote control)
- Remote Control Case x 1
- Screws x 2
- Instruction Manual x 1

## 3. SAFETY INFORMATION

Before installation and use, please read and understand the following safety precautions:

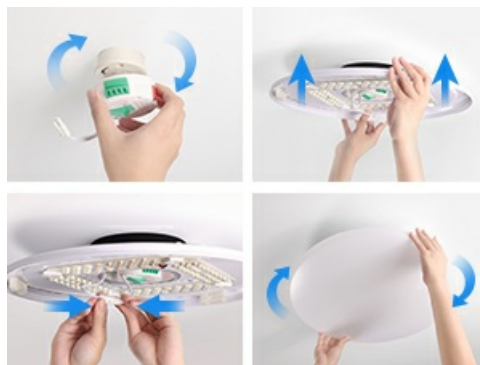
- Ensure the power is turned off at the main circuit breaker before installation or maintenance.
- Installation should be performed by a qualified electrician if you are unsure about the process.
- Do not disassemble or modify the product. This may void the warranty and cause electric shock or fire.
- Keep the device away from water and high humidity environments.
- Use only the specified power supply voltage.
- Keep out of reach of children.

## 4. SETUP

### 4.1 Installation

The SwitchBot LED Ceiling Light Pro is designed for easy installation in just 4 steps. Ensure the power is off before proceeding.

1. Attach the dedicated mounting adapter to your existing ceiling wiring fixture (e.g., square hook ceiling, round hook ceiling, hook rosette, embedded rosette).
2. Connect the main unit's wiring to the mounting adapter.
3. Secure the main unit to the mounting adapter by twisting or clicking it into place.
4. Attach the lampshade to the main unit.



*Visual guide for the simple 4-step installation process.*



*Examples of compatible wiring fixtures for installation.*

### 4.2 Initial Pairing with SwitchBot App

Download the SwitchBot app from your smartphone's app store. Follow the in-app instructions to add your new Ceiling Light Pro. This typically involves:

1. Ensuring your smartphone's Bluetooth and Wi-Fi (2.4GHz) are enabled.
2. Opening the SwitchBot app and tapping the '+' icon to add a new device.

3. Selecting the Ceiling Light Pro from the list of discoverable devices.
4. Following the prompts to connect the light to your home Wi-Fi network.

## 5. OPERATING INSTRUCTIONS

### 5.1 Brightness and Color Temperature Adjustment

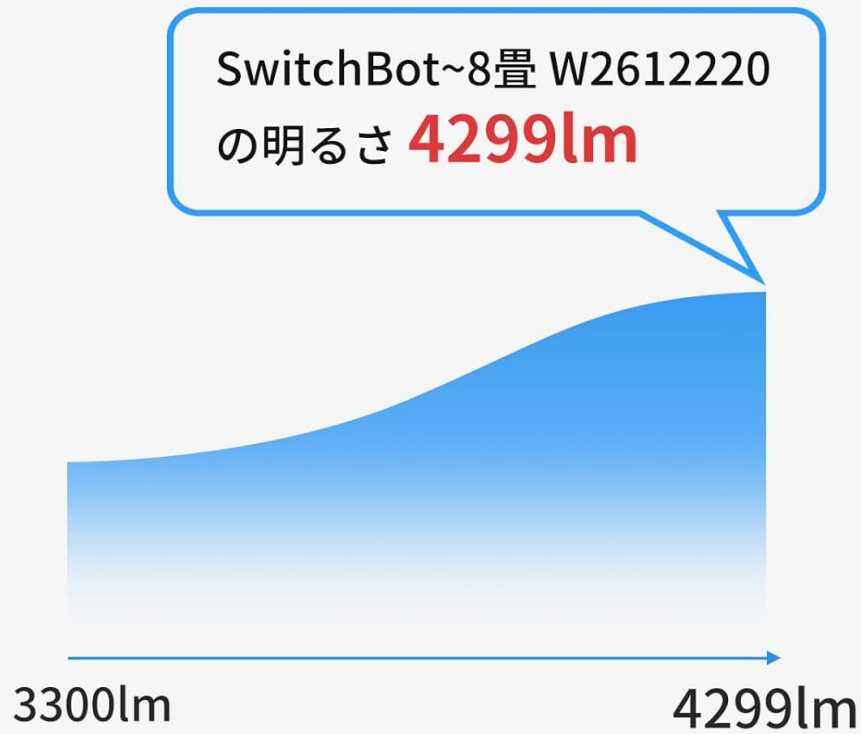
The Ceiling Light Pro offers stepless adjustment of brightness (1% to 100%) and color temperature via the SwitchBot app or the included remote control. This allows you to customize the lighting to suit any activity or mood.



*Adjusting the lighting from cool white to warm yellow to create different ambiances.*

# 想像を上回る明るさ

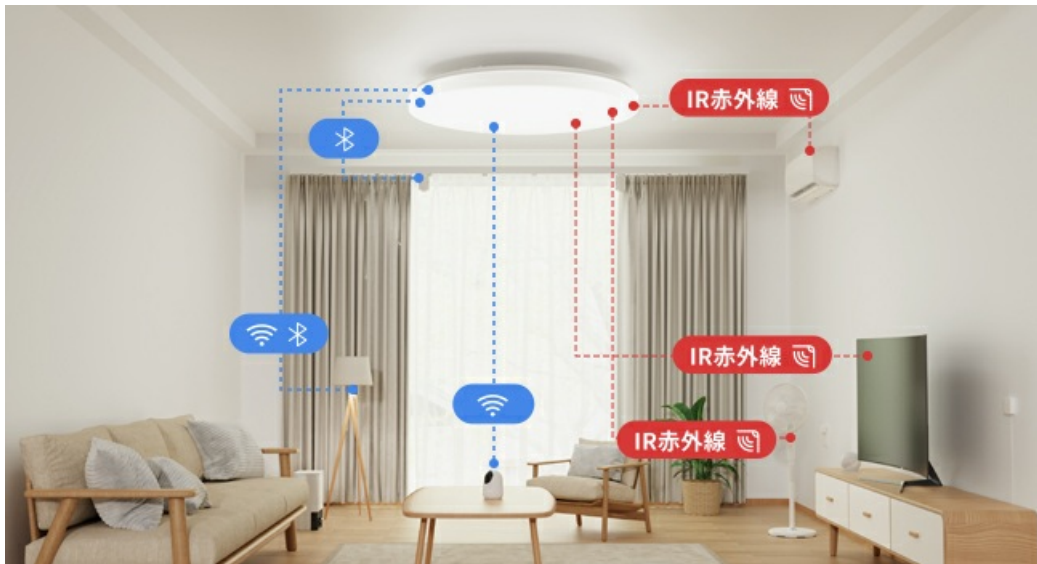
日本照明工業会によって定められた  
~8畳の明るさの基準範囲 (3300lm~4299lm)



*The SwitchBot LED Ceiling Light Pro provides 4299lm, meeting the Japanese industry standard for 8-tatami rooms.*

## 5.2 Smart Remote Control Function

This ceiling light integrates a smart remote control module, allowing it to control other infrared home appliances like air conditioners and TVs directly from the SwitchBot app. This eliminates the need for multiple remote controls.



The ceiling light functions as both a smart light and a smart remote, offering 2-in-1 functionality.



The integrated hub function allows seamless connection with other SwitchBot devices.

### 5.3 Voice Control

The Ceiling Light Pro is compatible with popular voice assistants such as Amazon Alexa, Google Assistant, Apple Siri, and LINE CLOVA. You can control the light and other connected appliances using voice commands.

- "Alexa, turn on the ceiling light."
- "Hey Google, set the ceiling light to warm white."
- "Siri, dim the living room light to 50%."



Voice control via Alexa for convenient operation.

## 5.4 Remote Operation (Outside Home)

With the SwitchBot app, you can control your ceiling light and other connected appliances remotely, even when you are away from home. This feature is useful for energy saving or pre-cooling your home.



Control your lighting and other appliances from anywhere using the SwitchBot app.

## 5.5 Scheduling and Modes

The app allows you to set schedules and activate various preset modes to automate your lighting based on your daily routine.

- **Morning Mode:** Gradually brightens like a sunrise to help you wake up comfortably.
- **Night Mode:** Gradually dims to moonlight levels, promoting a comfortable sleep environment.
- **Away Mode:** Turns lights on and off at set times to simulate occupancy, enhancing home security.
- **Relax Mode:** Sets a warm, dim light (e.g., 2700K, 50% brightness) for a relaxing atmosphere.
- **Dim Light Mode:** Provides a very soft light (e.g., 25lm, 1% brightness) for minimal illumination.

## おはようモード

日の出のようにゆっくりと明るくなり、快適な朝へ



30分後に点灯

## おやすみモード

月明かりまで徐々に暗くなり、心地良い眠りへ導く



30分後に消灯

*Morning and Night modes automate light transitions for improved comfort.*



### おはようモード

徐々に明るくなり気持ちよく起きられる

30min  
0% 100%

*The ceiling light supports various modes including Morning, Night, and Away for convenience and security.*

## 6. MAINTENANCE

### 6.1 Cleaning

To clean the ceiling light, ensure the power is off. Wipe the lampshade and main unit with a soft, dry cloth. Do not use abrasive cleaners or solvents, as they may damage the finish.

## 6.2 Longevity

The LED light source has a long lifespan of approximately 40,000 hours, which translates to about 10 years of typical use, minimizing the need for frequent replacement.



*The product offers a long lifespan and a 5-year warranty for peace of mind.*

## 6.3 Insect and Dust Prevention

The design includes a dust and insect-proof sponge to prevent small particles and insects from entering the fixture, maintaining light quality and cleanliness.



*Integrated sponge for protection against insects and dust.*

## 7. TROUBLESHOOTING

- **Light does not turn on:**  
Check if the power supply is connected correctly and the circuit breaker is on. Ensure the light is properly installed and secured to the mounting adapter.
- **Cannot connect to Wi-Fi:**  
Ensure your Wi-Fi network is 2.4GHz. Check if the Wi-Fi password is correct. Move the light closer to your Wi-Fi router. Restart your router and the ceiling light.
- **Remote control not working:**  
Check if the batteries are correctly inserted and have sufficient charge. Ensure there are no obstructions between the remote control and the light.
- **Voice control not responding:**  
Ensure the ceiling light is properly linked to your voice assistant (Alexa, Google Assistant, etc.) in the SwitchBot app. Check your internet connection.
- **Smart remote function not controlling other appliances:**

Ensure the infrared appliance is within range and line of sight of the ceiling light. Verify that the correct remote profile is selected in the SwitchBot app for the appliance.

## 8. SPECIFICATIONS

Feature	Specification
Brand	SwitchBot
Model Number	W2612220
Size (Tatami)	8 Tatami
Color	White
Style	Alexa Compatible & Smart Remote Function
Light Source Type	LED
Maximum Luminous Flux	4299 lm
Dimming/Color Adjustment	Stepless
Connectivity Protocol	Bluetooth, Wi-Fi (2.4GHz)
Special Features	5-year warranty, Stepless dimming/color adjustment, Energy saving
Control Method	Remote, Voice, App
Product Dimensions (L x W x H)	48 x 48 x 10.2 cm
UPC	850037096329

## 9. WARRANTY AND SUPPORT

### 9.1 Warranty Information

The warranty period for the SwitchBot LED Ceiling Light Pro is 5 years from the date of purchase. This covers the power board and LED light source board. The main unit (including the remote control) has a 1-year warranty. Consumable parts such as batteries and covers are not covered under warranty.

### 9.2 Customer Support

For any initial defects, malfunctions, or issues, please report the problem via the "Feedback" option in the profile section of the SwitchBot app. Our support team will assist you.