

VOYEE LSNGFCWAIX9

VOYEE Charger for Xbox Controller Battery Pack User Manual

Model: LSNGFCWAIX9

INTRODUCTION

This manual provides comprehensive instructions for the VOYEE Charger for Xbox Controller Battery Pack. It covers setup, operation, maintenance, and troubleshooting to ensure optimal performance and longevity of your product. Please read this manual carefully before using the product.

PRODUCT FEATURES

- **High Capacity Batteries:** Includes 3x 2600mAh rechargeable battery packs.
- **Fast Charging:** Safely charges two batteries within approximately 2.5 hours.
- **Wide Compatibility:** Designed for Xbox One, Xbox One S, Xbox One X, Xbox One Elite, and Xbox Series X|S controllers.
- **Intelligent Protection:** Built-in chip prevents overcharging, overcurrent, overheating, and short circuits.
- **LED Indicators:** Clear LED lights show charging status (charging/fully charged).
- **Long Battery Life:** Provides over 20 hours of playing time per charge.
- **Durable:** Batteries are rechargeable up to 3000 times.

PACKAGE CONTENTS

- 1 x VOYEE Fast Charger Station
- 3 x VOYEE 2600mAh Rechargeable Battery Packs
- 1 x USB Charging Cable (Micro-USB)
- 1 x User Manual

SETUP INSTRUCTIONS

1. **Unpack the Components:** Carefully remove all items from the packaging. Ensure all listed package contents are present.

2. **Connect the Charger:** Connect the provided USB charging cable to the Micro-USB port on the back of the VOYEE charger station. Plug the other end of the USB cable into a compatible USB power source (e.g., a USB wall adapter, game console USB port, or computer USB port).



Image: The VOYEE charger station with two 2600mAh battery packs inserted, and a third battery pack standing next to it. A Micro-USB cable is visible, ready for connection. This illustrates the main components of the charging system.



Image: A close-up view of the Micro-USB charging port on the charger station, with a charging cable being inserted. This highlights the connection point for power input.

3. **Insert Batteries into Charger:** Place the VOYEE rechargeable battery packs into the designated slots on the charger station. Ensure they are inserted correctly according to the polarity markings.



Image: The VOYEE charger station with two battery packs inserted and one battery pack floating above, illustrating the process of placing batteries into the charging slots. The LED indicators on the front of the charger are visible.

4. **Install Battery into Controller:** Open the battery compartment of your compatible Xbox controller. Insert one VOYEE rechargeable battery pack, ensuring correct orientation. Close the battery compartment.



Image: A close-up view of an Xbox controller's open battery compartment with a VOYEE rechargeable battery pack inserted. Plus and minus signs indicate correct polarity for installation.

OPERATING INSTRUCTIONS

Charging the Batteries

1. **Initiate Charging:** Once the charger station is connected to power and batteries are inserted, the LED indicators on the front of the charger will illuminate.

LED Indicator Light

Check the charging status at a glance

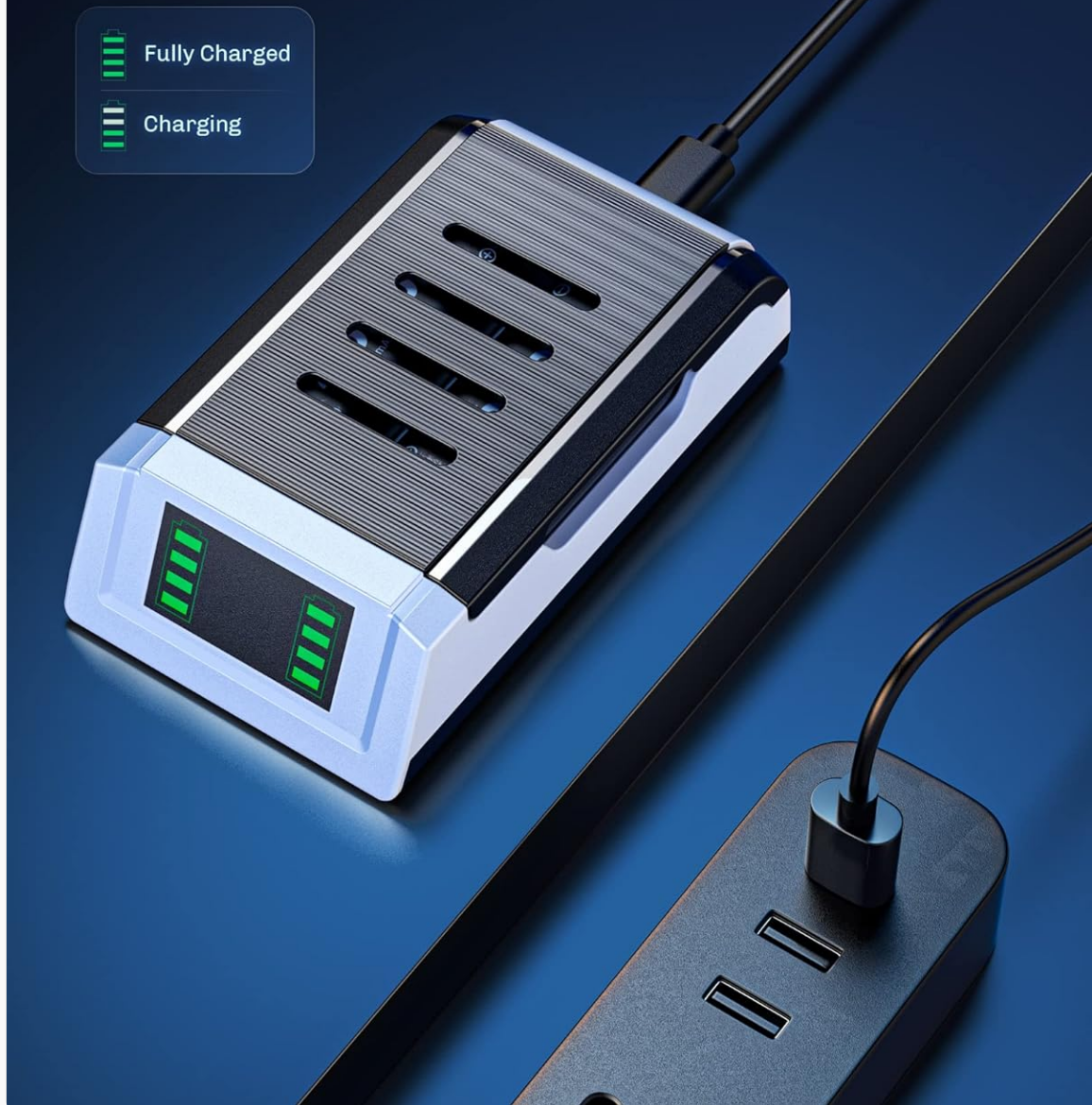


Image: The VOYEE charger station with illuminated LED indicators showing the charging status. A diagram next to it explains that solid green bars indicate charging, and all bars lit indicate fully charged.

2. Monitor Charging Status:

- **Charging:** The LED indicators will show a dynamic animation or partially filled bars, indicating that the batteries are currently charging.
- **Fully Charged:** When a battery is fully charged, its corresponding LED indicator will display solid, full bars.

2.5H Fast Charge & Safety Circuit

Safely fully charged 2 batteries within 2.5H

⚡ 2.5H



Image: An illustration emphasizing the 2.5-hour fast charging capability of the VOYEE charger, with a visual representation of speed and safety circuit.

3. **Charging Time:** It takes approximately 2.5 hours to fully charge two depleted VOYEE 2600mAh battery packs.

Using Batteries with Controllers

- Once a battery pack is fully charged, remove it from the charger and install it into your compatible Xbox controller as described in the Setup section.
- The 2600mAh capacity provides over 20 hours of continuous gameplay, depending on usage.
- When the controller's battery level is low, replace the battery pack with a freshly charged one from the station.

MAINTENANCE

- **Cleaning:** Use a soft, dry cloth to clean the charger station and battery packs. Do not use liquid cleaners or abrasive materials.
- **Storage:** Store the charger and batteries in a cool, dry place away from direct sunlight and extreme temperatures. If storing for extended periods, ensure batteries are partially charged (around 50%) to preserve their lifespan.
- **Battery Care:** Avoid fully discharging the batteries frequently. Recharge them when the controller indicates low power.
- **Connection Ports:** Ensure the Micro-USB port and battery contacts are free from dust and debris.
- **Anti-slip Pads:** The charger station features anti-slip pads on its base for stability. Ensure these are clean and intact for proper grip.

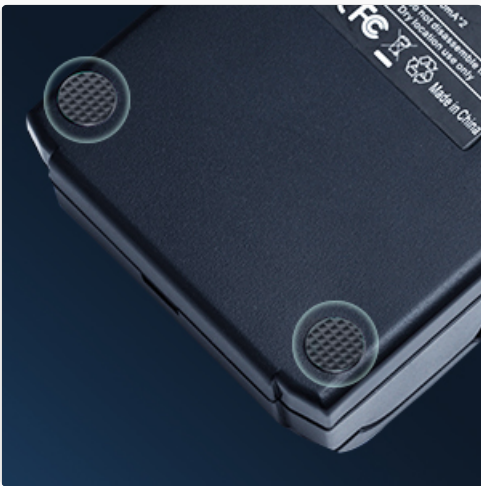


Image: A close-up view of the bottom of the VOYEE charger station, highlighting the textured anti-slip pads designed to keep the unit stable on surfaces.

TROUBLESHOOTING

Problem	Possible Cause	Solution
Charger LEDs do not light up.	No power supply; loose cable connection.	Ensure the USB cable is securely connected to both the charger and the power source. Try a different USB port or power adapter.
Batteries not charging.	Batteries not properly seated; dirty contacts; faulty battery.	Re-insert batteries, ensuring correct polarity. Clean battery and charger contacts with a dry cloth. Try charging a different battery to isolate the issue.
Short battery life in controller.	Battery not fully charged; battery degradation over time.	Ensure batteries are fully charged (LEDs show solid full bars). If battery life significantly decreases after many cycles, the battery may be nearing the end of its lifespan.
Controller not recognizing battery.	Battery not properly installed; controller issue.	Remove and re-install the battery pack in the controller, ensuring correct orientation. Test with another battery pack if available.

SPECIFICATIONS

- **Model Number:** LSNCFWAIX9
- **Battery Capacity:** 2600mAh per battery pack
- **Input Voltage:** 5 Volts
- **Output Voltage:** 5 Volts
- **Current Rating:** 1 Amps
- **Product Dimensions:** 4.61 x 2.56 x 1.26 inches (Charger Station)
- **Item Weight:** 11.1 ounces (Total package weight)
- **Compatibility:** Xbox One, Xbox One S, Xbox One X, Xbox One Elite, Xbox Series X|S controllers
- **Manufacturer:** VOYEE
- **Date First Available:** April 29, 2022




WARRANTY AND SUPPORT

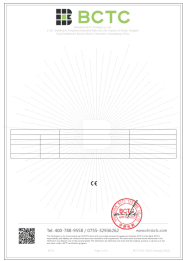
VOYEE products are designed for reliability and performance. For warranty information or technical support, please contact VOYEE customer service through the official VOYEE store on Amazon or their official website. Please have your model number (LSNCFWAIX9) and purchase date ready when contacting support.

For more information, visit the [VOYEE Store on Amazon](#).

© 2024 VOYEE. All rights reserved.

Related Documents - LSNCFWAIX9

	<p>VOYEE S03 Wireless Controller Instruction Manual for Nintendo Switch, PC, and Android</p> <p>Comprehensive instruction manual for the VOYEE S03 Wireless Controller, detailing features, connection modes for Nintendo Switch, PC, and Android, adjustable vibration, TURBO function, programmable buttons, charging, and troubleshooting.</p>
	<p>VOYEE Wireless Controller User Manual and Setup Guide</p> <p>Comprehensive user manual for the VOYEE Wireless Controller, detailing setup, connection modes (PC, Android, iOS, Switch), advanced features like M1/M2 key mapping, LED adjustments, vibration control, and TURBO function. Includes safety information and troubleshooting tips for optimal gaming experience.</p>
	<p>VOYEE N-S Wireless Controllers 503 User Manual</p> <p>Discover the VOYEE N-S Wireless Controllers 503 User Manual. Learn how to connect, charge, and customize your gamepad for Nintendo Switch, PC, and Android devices. Includes detailed instructions on button mapping, turbo functions, and troubleshooting for an optimized gaming experience.</p>



[Test Verification of Conformity for Wireless Controller X107](#)

This document verifies the conformity of the wireless controller model X107, manufactured by Dongguan Chenhao Electronic Technology Co., LTD., with various European safety, health, EMC, and radio standards.