



[Manuals.plus](#) /

› [Dioche](#) /

› Dioche One Handed Gaming Keyboard User Manual

## Dioche Mini 3 Key Keypad Mechanical White Gaming Keyboard

# Dioche One Handed Gaming Keyboard User Manual

Model: Mini 3 Key Keypad Mechanical White Gaming Keyboard

Brand: Dioche

## INTRODUCTION

---

The Dioche One Handed Gaming Keyboard is a versatile and compact 3-key custom keypad designed for various applications, including office work, gaming, music production, media control, and industrial control. It features programmable keys and an adjustment knob for enhanced functionality and convenience.



Image: The Dioche One Handed Gaming Keyboard, featuring three white keys and a silver rotary knob, presented on a clear acrylic base.

## SETUP

---

Setting up your Dioche One Handed Gaming Keyboard is straightforward. The device is designed for plug-and-play operation, requiring no additional drivers for basic functionality.

### Connecting the Keyboard

1. Locate the Type-C port on the keyboard.
2. Connect the provided Type-C to USB cable to the keyboard's Type-C port.
3. Plug the USB end of the cable into an available USB port on your computer or device.
4. The keyboard will be automatically recognized by your system.



Image: The Dioche One Handed Gaming Keyboard shown alongside its white USB Type-C cable, ready for connection.



Image: A user operating the Dioche One Handed Gaming Keyboard connected to a desktop computer, demonstrating its use in a typical work environment.

## OPERATING INSTRUCTIONS

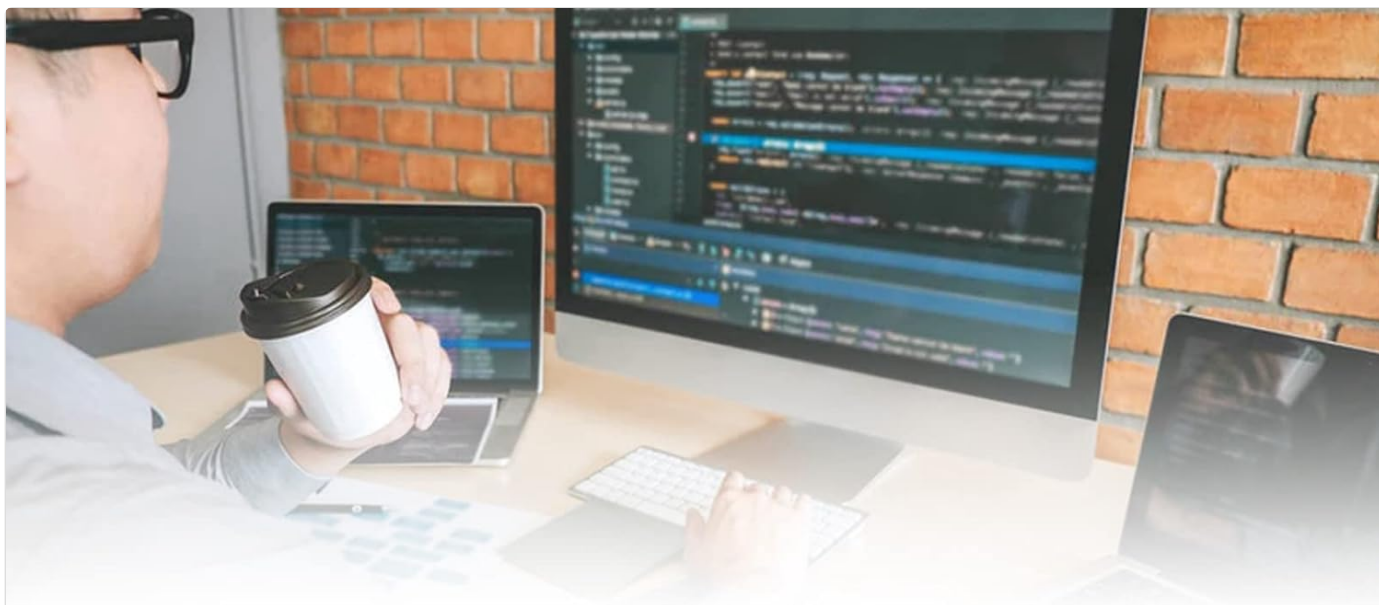
---

The Dioche One Handed Gaming Keyboard offers customizable functions and a versatile rotary knob to enhance your productivity and control.

### Custom Key Functions

The three keys on the keyboard are fully programmable. You can assign any standard keyboard key function or complex combination of shortcut keys to each key. This allows for one-key execution of frequently used or cumbersome commands. The settings can be repeated and stored without conflict.

- **Programmable Keys:** Assign single keys or complex shortcut combinations.
- **RGB Lighting:** The keyboard features RGB lighting for visual feedback and aesthetic customization.



# Multifunctional Mini Shortcut Keyboard

the knob can enlarge and reduce the screen  
switch the song, increase or decrease the volume, pause, play  
one key to achieve cumbersome and complex combination of shortcut keys



Image: The Dioche One Handed Gaming Keyboard with an overlay text describing its multifunctional capabilities, including knob functions and shortcut key programming.

## Rotary Knob Functions

The integrated rotary knob provides quick access to various media and system controls:

- **Screen Control:** Enlarge or reduce the screen view.
- **Media Playback:** Switch songs, increase or decrease volume, pause, and play.

## Storage Function

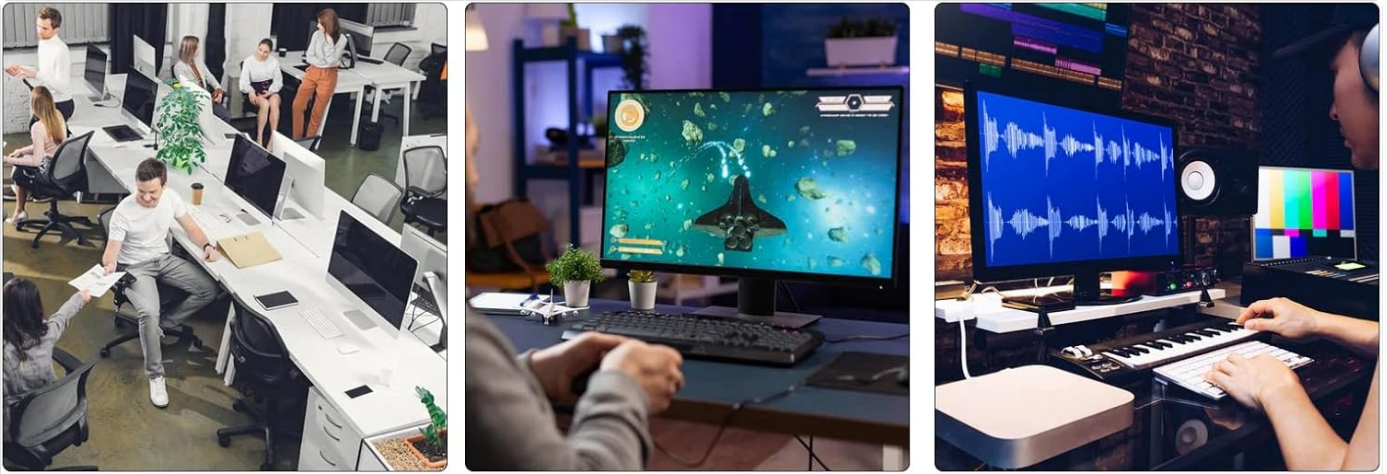
The keyboard includes a storage function, meaning that once you configure your key assignments and knob functions, these settings are saved directly on the device. This allows the keyboard to retain its custom programming when connected to different systems that support USB protocols, without needing to reinstall software or reconfigure settings.



no driver needed,  
just plug and play storage function  
can be used on systems  
that support usb protocols



Image: The Dioche One Handed Gaming Keyboard and its USB cable, with text emphasizing its driver-free, plug-and-play functionality and storage capability.



suitable for office, games, music, media, industrial control, laboratory, production line testing and other fields, convenient and easy to carry



Image: A collage showing the Dioche One Handed Gaming Keyboard being used in different scenarios: an office setting, a gaming setup, and a music production studio, illustrating its versatility.

## MAINTENANCE

---

To ensure the longevity and optimal performance of your Dioche One Handed Gaming Keyboard, follow these simple maintenance guidelines:

- **Cleaning:** Use a soft, dry cloth to wipe down the surface of the keyboard. For stubborn dirt, a slightly damp cloth with mild soap can be used, ensuring no liquid enters the device.
- **Avoid Liquids:** Do not expose the keyboard to excessive moisture or liquids, as this can damage internal components.
- **Storage:** When not in use, store the keyboard in a cool, dry place away from direct sunlight and extreme temperatures.
- **Handling:** Handle the keyboard with care to prevent drops or impacts that could damage the keys or internal circuitry.

## TROUBLESHOOTING

---

If you encounter issues with your Dioche One Handed Gaming Keyboard, please refer to the following common troubleshooting steps:

Problem	Possible Cause / Solution
Keyboard not recognized by computer.	<ul style="list-style-type: none"> <li>• Ensure the USB cable is securely connected to both the keyboard and the computer.</li> <li>• Try connecting the keyboard to a different USB port on your computer.</li> <li>• Test the keyboard on another computer to rule out system-specific issues.</li> <li>• Ensure your operating system is up to date.</li> </ul>
Custom functions not working.	<ul style="list-style-type: none"> <li>• The keyboard requires specific software for programming custom key functions. This software is typically provided by the manufacturer or can be found on their official support channels.</li> <li>• Ensure the programming software is correctly installed and the custom settings have been saved to the keyboard's internal memory.</li> <li>• Verify that the software is compatible with your operating system.</li> </ul>
Keys feel loose or come out easily.	<ul style="list-style-type: none"> <li>• This keyboard uses hot-swappable mechanical switches. While convenient for customization, the switches may not always engage firmly with the acrylic top plate.</li> <li>• Gently push the switch back into place until it is seated correctly. This is generally not a functional issue unless the switch is completely dislodged.</li> </ul>
RGB lighting not functioning.	<ul style="list-style-type: none"> <li>• Check the programming software for RGB lighting control options.</li> <li>• Ensure the lighting is not set to "off" or a very dim setting.</li> </ul>

## SPECIFICATIONS

Feature	Detail
Brand	Dioche
Model	Mini 3 Key Keypad Mechanical White Gaming Keyboard
Connectivity	Type-C to USB (Plug and Play)
Keys	3 Programmable Keys
Control	1 Rotary Knob (Volume, Song Switch, Screen Zoom)
Lighting	RGB Lighting
Storage	Built-in storage for custom settings
Package Dimensions	4.72 x 2.36 x 1.73 inches
Item Weight	3.84 ounces
Included Components	USB Cable
Country of Origin	China

## WARRANTY AND SUPPORT

For information regarding warranty coverage, technical support, or to obtain the necessary programming software for your Dioche One Handed Gaming Keyboard, please contact the manufacturer or the seller directly. Refer to your purchase documentation or the product packaging for specific contact details.

You may also visit the official Dioche store on Amazon for additional resources: [Dioche Store](#)

