



[Manuals.plus](#) /

› [CopGain](#) /

› CopGain P2 PRO Triple Portable Monitor User Manual

## CopGain P2PRO

# CopGain P2 PRO Triple Portable Monitor User Manual

Model: P2PRO

## INTRODUCTION

---

Thank you for choosing the CopGain P2 PRO Triple Portable Monitor. This device is designed to enhance your productivity by providing a multi-screen workstation for your laptop. This manual will guide you through the setup, operation, and maintenance of your new portable monitor.

## WHAT'S IN THE BOX

---

Please verify that all items are present in the packaging:

- Triple Screen Extender (P2 PRO Unit)
- 2 x USB-A to Type-C Cables
- Type-C Cables (quantity may vary, typically 2)
- Storage Bag
- Operations Manual (this document)
- Packaging Box

# Packing List :



Image: Contents of the CopGain P2 PRO Triple Portable Monitor package.

## PRODUCT OVERVIEW

### Key Features

- 13.3-inch FHD 1080P IPS Displays
- Adjustable Bracket for stability
- 207° Rotation for flexible viewing angles
- Aluminum Alloy Frame for durability
- Anti-Glare Screen
- Multiple Display Modes (Extended, Mirrored, Presentation, Bracket)
- Type-C/PD/TF Support

# PORTABLE TRIPLE SCREEN LAPTOP WORKSTATION



13.3" Display



Brightness control



207° ROTATION



Ultra Portable



Aluminum Alloy



Telescopic stand



4 Display Mode



IPS HD 1080P

Image: Overview of the CopGain P2 PRO Triple Portable Monitor with its main features.

## Ports and Controls

Familiarize yourself with the ports and controls on your P2 PRO monitor:

- **Type-C Port (Display & Power Delivery 2-in-1):** For connecting to your laptop for both video signal and power.
- **Type-C PD Port (60W Power Delivery):** For external power input to charge the monitor or pass-through charge your laptop.
- **TF Card Slot:** For driver documentation.
- **Power Button:** To turn the unit on/off.
- **UP/DOWN Buttons:** For navigating OSD menu and adjusting settings.
- **Lock Switch:** To secure the extender to laptops between 13.3-16.5 inches.

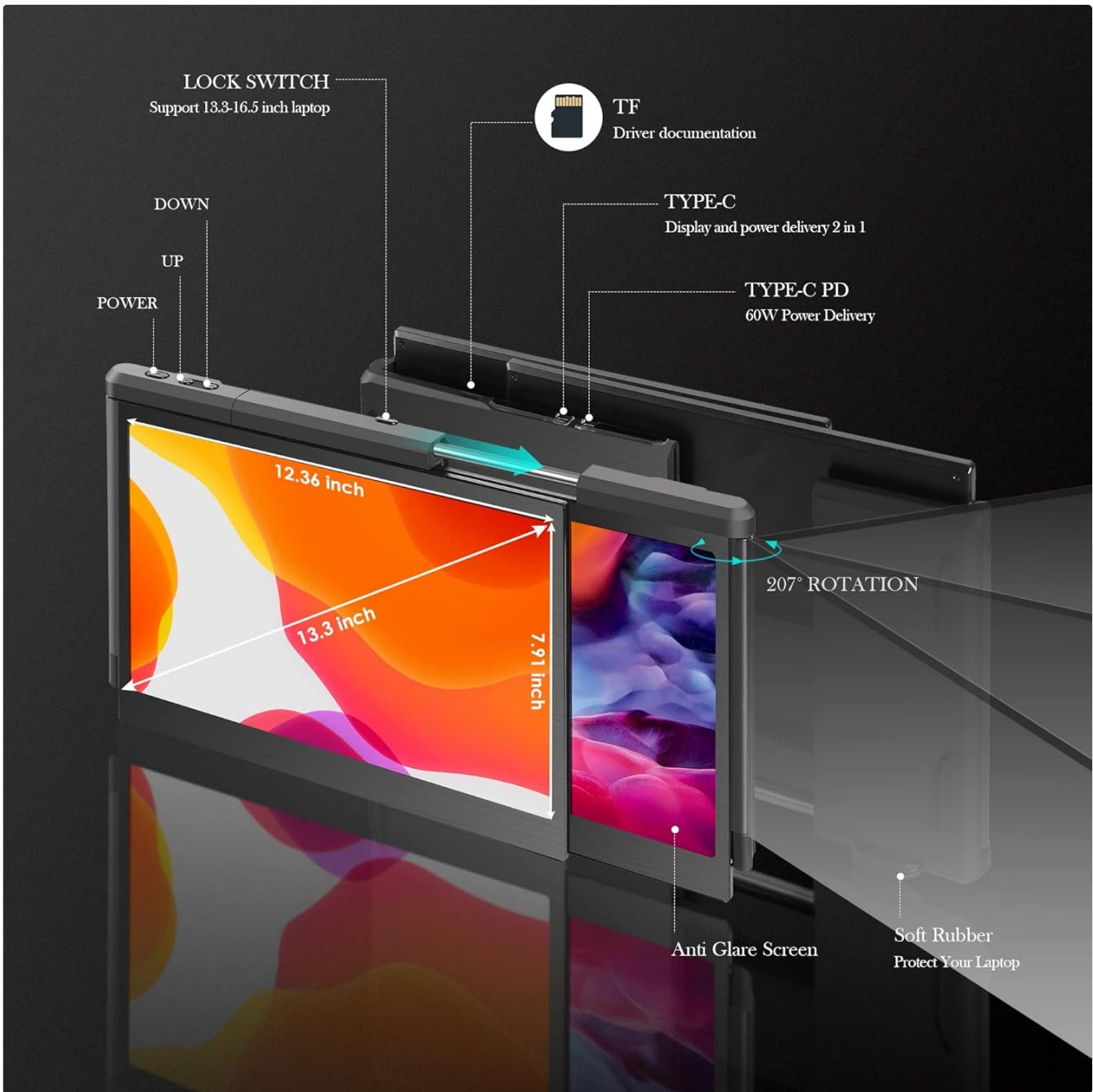


Image: Detailed view of the ports and controls on the P2 PRO monitor.

# SUPPORT TYPE-C/USB

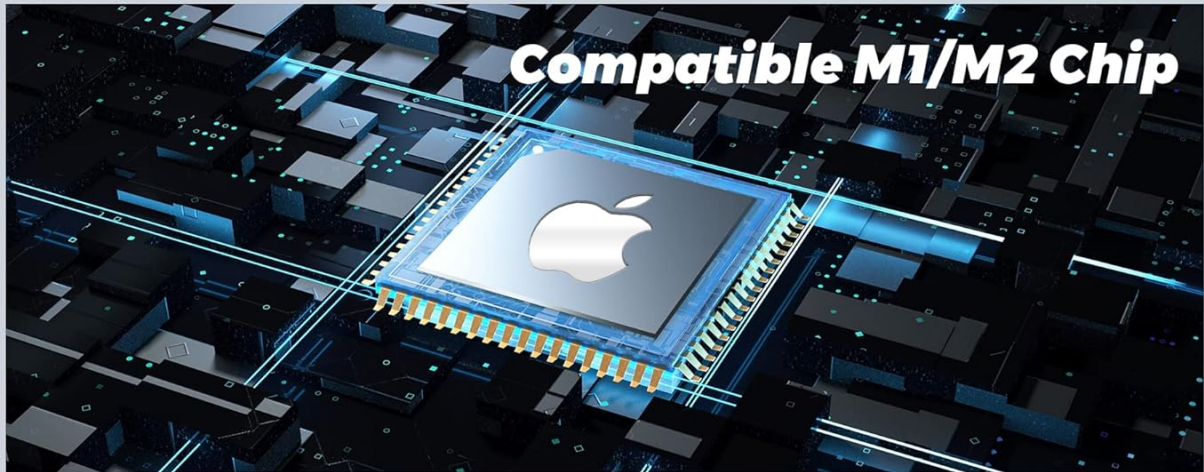
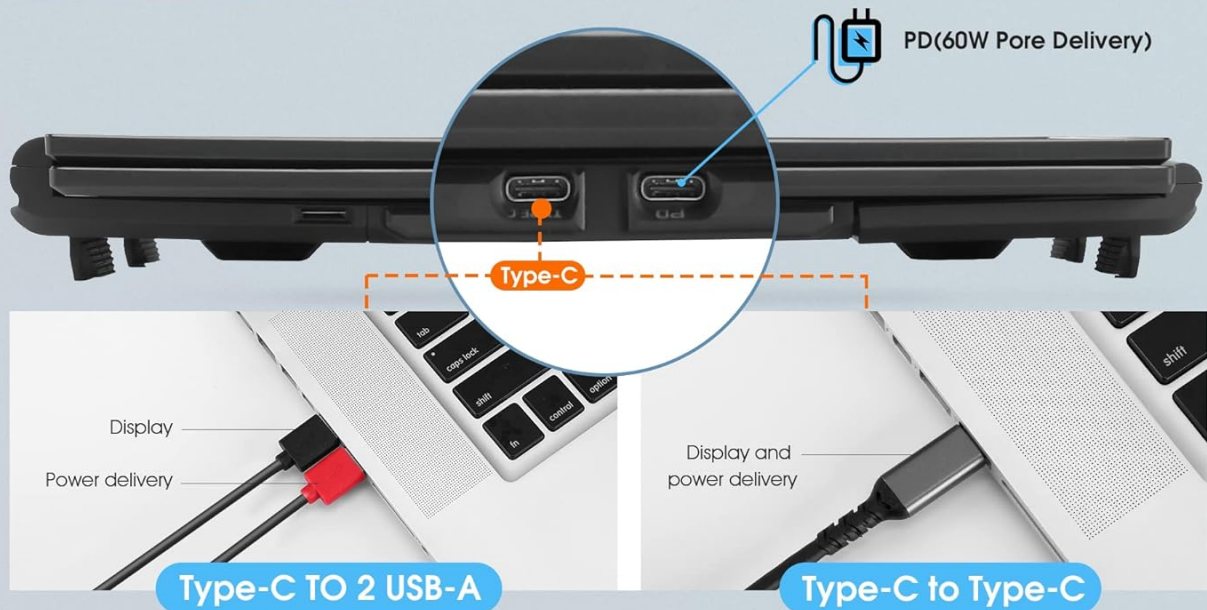


Image: Connectivity options for the P2 PRO monitor, showing Type-C and PD ports.

## SETUP INSTRUCTIONS

### Unfolding and Attaching the Monitor

1. Carefully remove the P2 PRO Triple Portable Monitor from its packaging.
2. Place your laptop on a stable surface.
3. Unfold the P2 PRO unit. The central part attaches to the back of your laptop screen.
4. Adjust the extendable holder to fit your laptop screen size (13.3"-16.5"). Ensure the lock switch is engaged to secure the unit.
5. Extend the side monitors to your desired viewing angle. The monitors can rotate up to 207°.
6. Adjust the integrated adjustable bracket at the back of the unit for additional support and stability. Tighten the bracket by turning right, slacken by turning left.

# Aluminum Alloy Frame



Image: Adjusting the support bracket for the P2 PRO monitor.

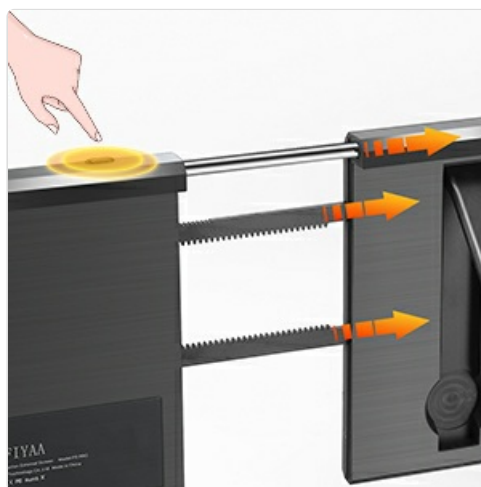


Image: Stretching the holder to fit your laptop.



Image: Illustrating the 207° rotation capability.

## Connecting to Your Laptop

The P2 PRO monitor supports various connection methods. Choose the one that best suits your laptop's available ports:

- 1. Full-Featured Type-C Port (Display & Power Delivery):** If your laptop has a full-featured Type-C port (which supports both video output and power delivery), connect one of the provided Type-C to Type-C cables from your laptop to the P2 PRO's Type-C port. This single cable can provide both power and video signal to one monitor. Repeat for the second monitor if your laptop has two such ports.
- 2. USB-A and HDMI Ports:** If your laptop does not have full-featured Type-C ports, you will need to use the provided USB-A to Type-C cables for power and a separate video cable (not included, e.g., HDMI to Type-C adapter) for the video signal. Connect the USB-A end to your laptop and the Type-C end to the P2 PRO's Type-C port for power. Connect your video output (e.g., HDMI) to a suitable adapter that connects to the P2 PRO's Type-C port for video.
- 3. External Power (Optional):** If your laptop cannot provide sufficient power, or if you wish to charge your laptop via the monitor, connect an external power adapter (not included) to the P2 PRO's Type-C PD (Power Delivery) port.

**Note: Ensure your laptop's graphics card supports multiple external displays. Some older laptops or specific configurations may have limitations.**

## DRIVER INSTALLATION

---

Before using the P2 PRO monitor, you may need to install the necessary drivers. The drivers are typically located on a TF card included with the product or can be downloaded from the manufacturer's website.

- 1. Connect the Product:** Connect the P2 PRO monitor to your laptop using the appropriate cables as described in the Setup section.
- 2. Insert TF Card (if applicable):** If a TF card is provided, insert it into your laptop's TF card reader or an external card reader.
- 3. Install the Driver:** Locate the driver installation file on the TF card or downloaded from the website. Run the installer.
- 4. Disable Antivirus (Temporary):** During driver installation, it is recommended to temporarily close any antivirus software to prevent interference.
- 5. Follow On-Screen Prompts:** Follow the instructions provided by the installer. Select the correct driver for your operating system (Windows, macOS, Android).

6. **Restart (if prompted):** Restart your laptop if prompted after installation.



Image: Driver installation process for Windows, macOS, and Android.

**Note: For macOS M1/M2 chip users, ensure you have the latest drivers specifically designed for M1/M2 chips. Some users have reported needing to download updated drivers from the internet if the included ones are outdated.**

## OPERATING INSTRUCTIONS

### Powering On/Off

Press the Power button on the side of the monitor to turn it on or off.

### Display Modes

The P2 PRO supports various display modes to suit your workflow:

- **Extended Mode:** Each monitor displays a separate portion of your desktop, expanding your workspace. This is ideal for multitasking.
- **Mirrored Mode:** All monitors display the same content as your primary laptop screen. Useful for presentations or sharing content.
- **Presentation Mode:** Similar to mirrored mode, often used when facing an audience.
- **Bracket Mode:** Allows the monitors to be used independently with their own stand, detached from the laptop.

You can typically switch between these modes through your operating system's display settings (e.g., Windows Display Settings, macOS System Settings > Displays).

# Multi-Scene Application



Image: Multi-scene application examples for the P2 PRO monitor.



Image: Various display modes: Presentation, Extended, Mirrored, and Bracket.

## On-Screen Display (OSD) Menu

Use the UP/DOWN buttons to navigate the OSD menu and adjust settings such as brightness, contrast, color temperature, and input source. Refer to the on-screen prompts for specific menu options.

## COMPATIBILITY

The CopGain P2 PRO Triple Portable Monitor is compatible with a wide range of laptops and operating systems,

including:

- **Laptops:** Designed for 13.3"-16.5" notebooks.
- **Operating Systems:** Windows, macOS (including M1/M2 MacBook), Android.
- **Connectivity:** USB Type-C (full-featured), USB-A (with appropriate adapters for video).

**Important: Always ensure your laptop has the necessary ports and graphics capabilities to support multiple external displays. For M1/M2 MacBooks, specific driver versions may be required to enable triple display functionality.**

## MAINTENANCE

---

- **Cleaning:** Use a soft, lint-free cloth to clean the screen and exterior. Do not use abrasive cleaners or solvents.
- **Storage:** When not in use, fold the monitor and store it in the provided storage bag to protect it from dust and scratches.
- **Handling:** Handle the unit with care. Avoid dropping it or applying excessive force to the screens or hinges.
- **Temperature:** Avoid exposing the monitor to extreme temperatures or direct sunlight for prolonged periods.

## TROUBLESHOOTING

---

| Problem                                     | Possible Cause                                                                    | Solution                                                                                                                                                                                                                                                                                                                                                   |
|---------------------------------------------|-----------------------------------------------------------------------------------|------------------------------------------------------------------------------------------------------------------------------------------------------------------------------------------------------------------------------------------------------------------------------------------------------------------------------------------------------------|
| Monitors do not power on.                   | No power, loose connection, power button not pressed.                             | <ul style="list-style-type: none"><li>• Ensure cables are securely connected.</li><li>• Press the power button.</li><li>• Connect an external power source to the Type-C PD port.</li><li>• Verify your laptop's Type-C port supports power delivery.</li></ul>                                                                                            |
| No display/signal.                          | Incorrect input source, driver issue, incompatible port, laptop display settings. | <ul style="list-style-type: none"><li>• Check cable connections.</li><li>• Ensure drivers are correctly installed (refer to Driver Installation section).</li><li>• Verify your laptop's ports support video output.</li><li>• Adjust laptop display settings (e.g., Extend, Duplicate).</li><li>• Try a different cable or port on your laptop.</li></ul> |
| Monitors flicker or display unstable image. | Insufficient power, faulty cable, driver issue.                                   | <ul style="list-style-type: none"><li>• Connect an external power source to the Type-C PD port.</li><li>• Try a different cable.</li><li>• Update or reinstall display drivers.</li></ul>                                                                                                                                                                  |

| Problem                                         | Possible Cause                             | Solution                                                                                                                                                                                                                                        |
|-------------------------------------------------|--------------------------------------------|-------------------------------------------------------------------------------------------------------------------------------------------------------------------------------------------------------------------------------------------------|
| Cannot achieve triple display on MacBook M1/M2. | Driver incompatibility, macOS limitations. | <ul style="list-style-type: none"> <li>• Ensure you have the latest drivers specifically designed for M1/M2 chips.</li> <li>• Check for macOS updates.</li> <li>• Consult CopGain support for specific M1/M2 compatibility guidance.</li> </ul> |

Your browser does not support the video tag.

Video: An overview of the CopGain P2 PRO Laptop Screen Extender Triple Monitor, demonstrating its features and setup. This video is provided by the seller, CopGain Store-US.

## SPECIFICATIONS

| Feature                     | Detail                                                           |
|-----------------------------|------------------------------------------------------------------|
| Brand                       | CopGain                                                          |
| Model Number                | P2PRO                                                            |
| Screen Size                 | 13.3 Inches (each monitor)                                       |
| Resolution                  | FHD 1080p (1920 x 1080 Pixels)                                   |
| Display Type                | IPS LCD                                                          |
| Aspect Ratio                | 16:9                                                             |
| Refresh Rate                | 60 Hz                                                            |
| Contrast Ratio              | 1000:1                                                           |
| Viewing Angle               | 178 Degrees                                                      |
| Screen Finish               | Glossy (Anti-Glare)                                              |
| Response Time               | 5 Milliseconds                                                   |
| Connectivity Technology     | USB Type C                                                       |
| Item Dimensions (D x W x H) | 8.25"D x 13.35"W x 1.15"H                                        |
| Item Weight                 | 3.53 Pounds                                                      |
| Additional Features         | Height Adjustment, Portable, Swivel Adjustment, Ultrawide Screen |
| Manufacturer                | Shenzhen Baijiayoupu Technology Co., Ltd.                        |

## WARRANTY AND SUPPORT

### Warranty Information

The CopGain P2 PRO Triple Portable Monitor comes with a warranty of 365 days from the date of purchase, covering non-human damage. Please retain your proof of purchase for warranty claims.

## Customer Support

For technical assistance, warranty claims, or further inquiries, please contact CopGain customer support. Refer to the contact information provided in your product packaging or visit the official CopGain website.

Manufacturer: Shenzhen Baijiayoupu Technology Co., Ltd.