

LAPTPBAT 8019-0535-01

LAPTPBAT Rechargeable Li-Ion Battery Pack REF 8019-0535-01 Instruction Manual

Model: 8019-0535-01

1. INTRODUCTION

This manual provides essential information for the safe and effective use of your LAPTPBAT Rechargeable Li-Ion Battery Pack, Model REF 8019-0535-01. This battery pack is designed for compatibility with Zoll SurePower E Series and R Series medical devices. Please read this manual thoroughly before installation and operation, and retain it for future reference.

2. SAFETY INFORMATION

Always observe the following safety precautions to prevent injury or damage to the battery pack and connected devices:

- Do not disassemble, open, or shred the battery pack.
- Do not expose the battery pack to heat or fire. Avoid storage in direct sunlight.
- Do not short-circuit the battery pack. Do not store battery packs haphazardly in a box or drawer where they may short-circuit each other or be short-circuited by other metal objects.
- Do not expose the battery pack to mechanical shock.
- In case of battery leakage, do not allow the liquid to come into contact with the skin or eyes. If contact has occurred, wash the affected area with copious amounts of water and seek medical advice.
- Do not use any charger other than that specifically provided for use with the equipment.
- Observe the plus (+) and minus (-) marks on the battery and equipment and ensure correct use.
- Do not use any battery pack which is not designed for use with the equipment.
- Keep the battery pack out of the reach of children.
- Dispose of the battery pack properly. Do not dispose of in household waste. Refer to the Maintenance section for disposal instructions.
- Avoid exposure to temperatures exceeding 70°C (158°F).

This battery pack incorporates multiple safety protections, including overvoltage, overcurrent, short circuit, anti-static, temperature anomaly, power, over-discharge, overcharge, electromagnetic, charging time,

intelligent protection, and Level 1 backup protection.

LAPTPBAT

Back



Image: Back of the battery pack displaying important safety and recycling information. Note the "RECYCLE LI-ION" symbol and temperature warning.

12 LAYERS OF SAFETY PROTECTION

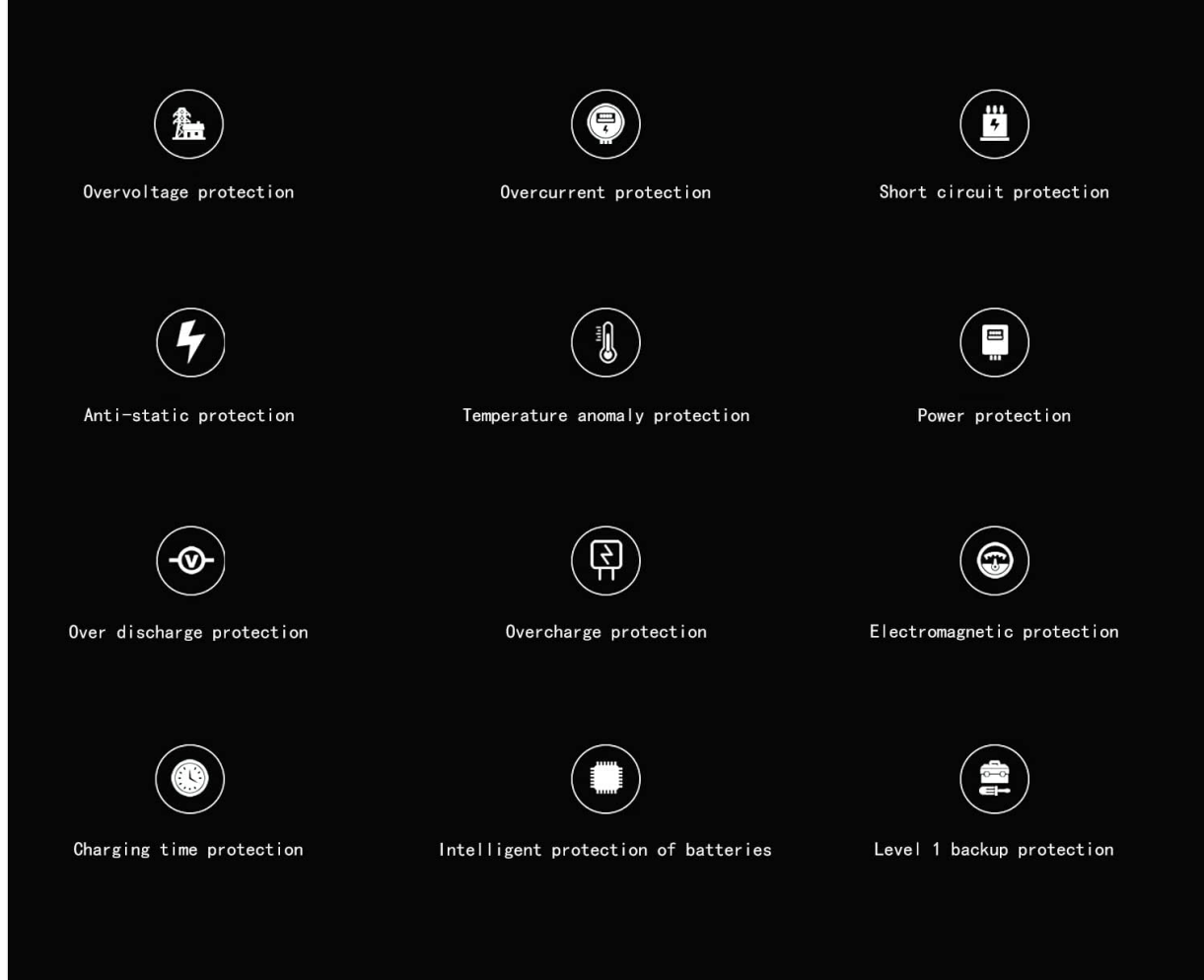


Image: Visual representation of the 12 layers of safety protection integrated into the battery design, including overvoltage, overcurrent, and temperature anomaly protection.

3. PRODUCT OVERVIEW

The LAPTPBAT REF 8019-0535-01 is a high-performance Lithium-Ion rechargeable battery pack designed to provide reliable power for compatible medical devices. Key features include:

- **Model:** REF 8019-0535-01
- **Capacity:** 63Wh / 5800mAh
- **Voltage:** 10.8V
- **Battery Type:** Li-ion
- **Construction:** Cells Made in Japan, Assembled in USA
- **Advanced Features:** Gold plating process for stable and reliable connections, composite material for high temperature resistance and anti-extrusion.

LAPTOPBAT

Product Parameter

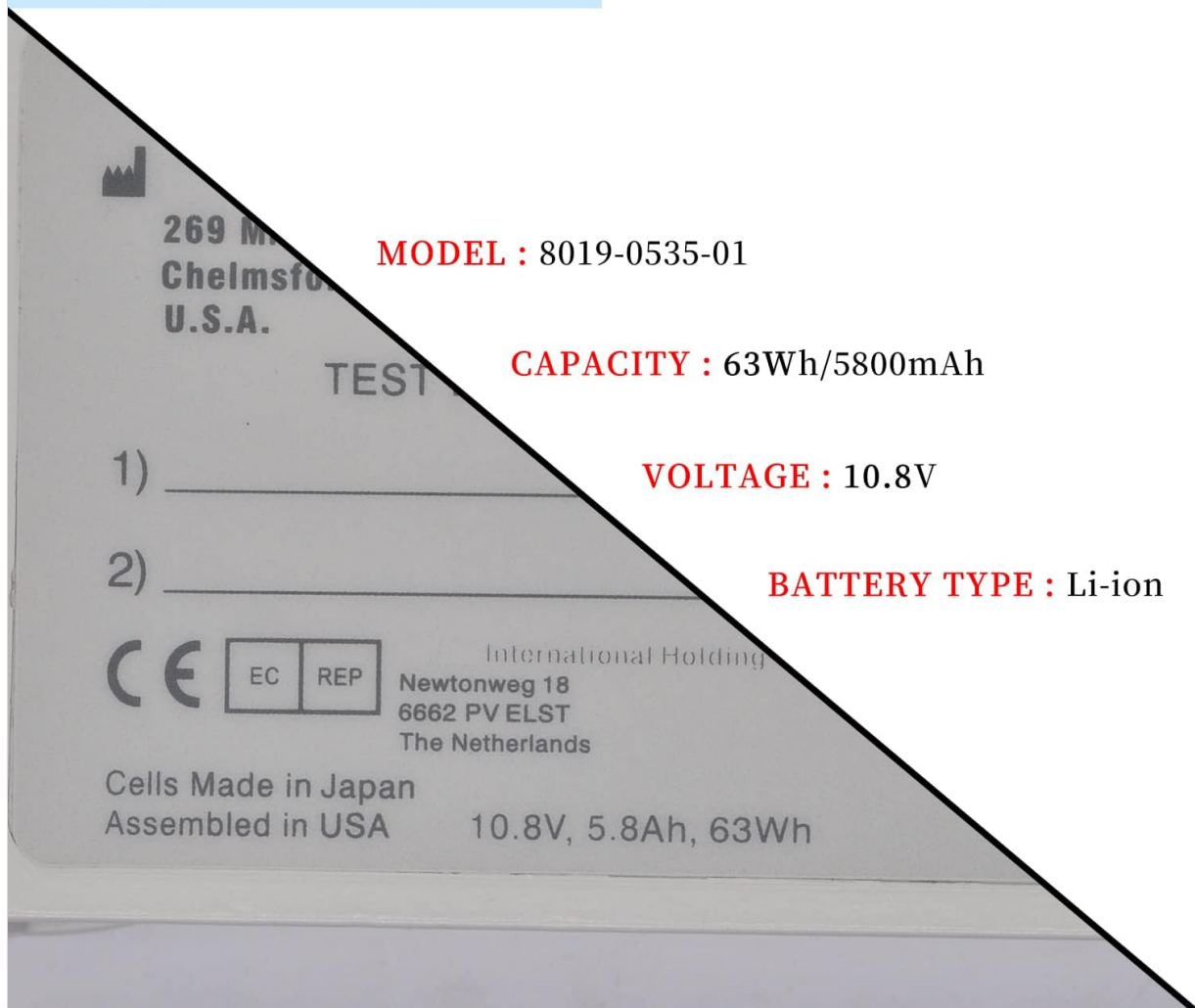
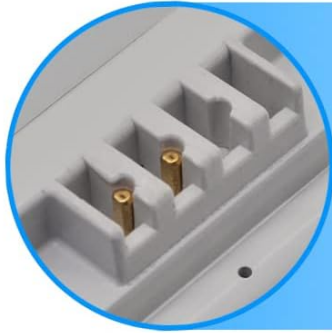


Image: Product label detailing the model number, capacity (63Wh/5800mAh), voltage (10.8V), and battery type (Li-ion).

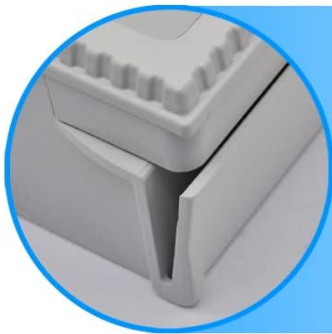
LAPTPBAT

Show details



Gold plating process

Stable and reliable



Composite material

High temperature resistance

Anti-extrusion

Image: Detailed view highlighting the gold plating process for stable connections and the durable composite material used in the battery's construction.



A new generation of smart batteries
Continuous and stable output
Escorting your work, leisure and entertainment

Image: Conceptual illustration representing the advanced 'NEW GEN' smart battery technology, designed for continuous and stable power output.

4. SETUP AND INSTALLATION

To install the LAPTPBAT REF 8019-0535-01 battery pack into your Zoll SurePower E Series or R Series device:

1. Ensure the medical device is powered off and disconnected from any external power sources.
2. Locate the battery compartment on your Zoll SurePower device. Refer to your device's specific user manual for the exact location and opening procedure.
3. If replacing an old battery, carefully remove it according to the device manufacturer's instructions.
4. Align the LAPTPBAT battery pack with the battery compartment, ensuring the contacts match correctly.
5. Gently slide the battery into the compartment until it clicks securely into place. Do not force the battery.
6. Close the battery compartment cover.
7. Connect the device to its charger to initiate the first charge cycle.

5. OPERATING INSTRUCTIONS

Charging the Battery

For optimal performance and longevity, charge the battery pack fully before its first use and whenever the device indicates a low battery level.

- Use only the charger specifically designed for your Zoll SurePower E Series or R Series device.
- Connect the device with the installed battery to the appropriate power source using the device's charger.
- Monitor the charging indicator on your device. The charging time may vary depending on the battery's discharge level and the charger's specifications.
- Once fully charged, the device's indicator will typically show a full charge or stop blinking.

Using the Battery

The LAPTPBAT battery pack provides portable power for your Zoll SurePower E Series or R Series device. Ensure the battery is adequately charged before critical use. The device will draw power from the battery when disconnected from an external power source.

6. MAINTENANCE

Care and Cleaning

- Keep the battery pack clean and dry. Wipe with a soft, dry cloth if necessary.
- Do not use harsh chemicals or abrasive cleaners.
- Regularly inspect the battery contacts for dirt or corrosion. Clean gently with a cotton swab if needed.

Storage

- Store the battery pack in a cool, dry place, away from direct sunlight and extreme temperatures. The recommended storage temperature is below 70°C (158°F).
- For long-term storage, it is advisable to store the battery with a partial charge (around 50%) to maintain battery health.
- Avoid storing the battery completely discharged or fully charged for extended periods.

Disposal and Recycling

Lithium-Ion batteries must be recycled or disposed of properly. Do not dispose of the battery pack in general household waste or incinerate it. Contact your local waste management authority or a certified electronics recycling center for information on proper disposal and recycling options in your area.

7. TROUBLESHOOTING

If you encounter issues with your battery pack, consider the following common troubleshooting steps:

- **Battery not charging:**
 - Ensure the charger is properly connected to both the device and the power outlet.
 - Verify that the power outlet is functional.
 - Check the battery contacts for dirt or damage. Clean if necessary.
 - Ensure the battery is correctly seated in the device's compartment.
- **Device not powering on with battery:**
 - Confirm the battery is fully charged.
 - Re-install the battery to ensure proper connection.

- Test the device with another known-good battery if available, or connect the device directly to AC power (if supported) to rule out device issues.

- **Short battery life:**

- Ensure the battery is being fully charged each cycle.
- Operating in extreme temperatures can reduce battery life.
- Over time, all rechargeable batteries experience a decrease in capacity. If the battery is old, it may be nearing the end of its service life.

If these steps do not resolve the issue, please contact customer support.

8. SPECIFICATIONS

Attribute	Detail
Brand	LAPTPBAT
Model Number	REF 8019-0535-01
Battery Cell Composition	Lithium Ion
Battery Capacity	5.8 Amp Hours (63Wh)
Voltage	10.8 Volts
Compatibility	Zoll SurePower E Series / R Series
Manufacturer	LAPTPBAT
ASIN	B09YVLYWMM
Date First Available	April 26, 2022

9. WARRANTY INFORMATION

Specific warranty details for the LAPTPBAT REF 8019-0535-01 battery pack are typically provided at the point of purchase or included with the product packaging. Please refer to your purchase documentation for the exact warranty period and terms. Generally, manufacturer warranties cover defects in materials and workmanship under normal use.

For warranty claims or inquiries, retain your proof of purchase and contact the seller or LAPTPBAT customer support.

10. CUSTOMER SUPPORT

If you require further assistance, have questions not covered in this manual, or need to report an issue, please contact LAPTPBAT customer support through the retailer where the product was purchased. Provide your product model number (REF 8019-0535-01) and proof of purchase for efficient service.