

VEVOR LFM120-1200-E

VEVOR 48" Commercial Indoor Air Curtain (Model LFM120-1200-E) User Manual

Model: LFM120-1200-E | Brand: VEVOR

1. INTRODUCTION

The VEVOR 48" Commercial Indoor Air Curtain (Model LFM120-1200-E) is designed to create an invisible air barrier over doorways, effectively separating indoor and outdoor environments. This unit helps maintain indoor temperatures, blocks dust, fumes, and unwanted insects, contributing to a cleaner and more comfortable space. It is suitable for various commercial and heavy-duty applications.



Figure 1: Front view of the VEVOR 48-inch Commercial Indoor Air Curtain.

2. KEY FEATURES

- **Powerful Air Wall:** Delivers 1200 CFM airflow, creating an effective barrier against dust, odors, and temperature fluctuations.
- **Low-Noise Operation:** Engineered for quiet performance, ensuring minimal disturbance in various settings.
- **Two-Speed Settings:** Offers adjustable fan speeds (low for energy efficiency, high for robust isolation) to adapt to different seasonal needs.
- **Magnetic Door Switches:** Includes two magnetic door switches for automatic operation, activating the unit when doors open and deactivating when closed. Compatible with both sliding and swinging doors.
- **Durable Construction:** Features a slim metal body with corrosion resistance and rust prevention. Equipped with a pure copper motor for reliable and stable performance, and large-diameter fan blades for high airflow and low noise.



1200CFM INVISIBLE AIR CURTAIN

Powerful Barrier Against Dust and Odors

Figure 2: The air curtain creates an invisible barrier to maintain indoor air quality.

QUIET OPERATION

Enjoy Your Meals in a Clean Area Without Flies



Figure 3: Quiet operation ensures a comfortable environment.

ONE-BUTTON SWITCH FOR TWO FAN SPEEDS

Meets Your Four-Season, Personalized Needs

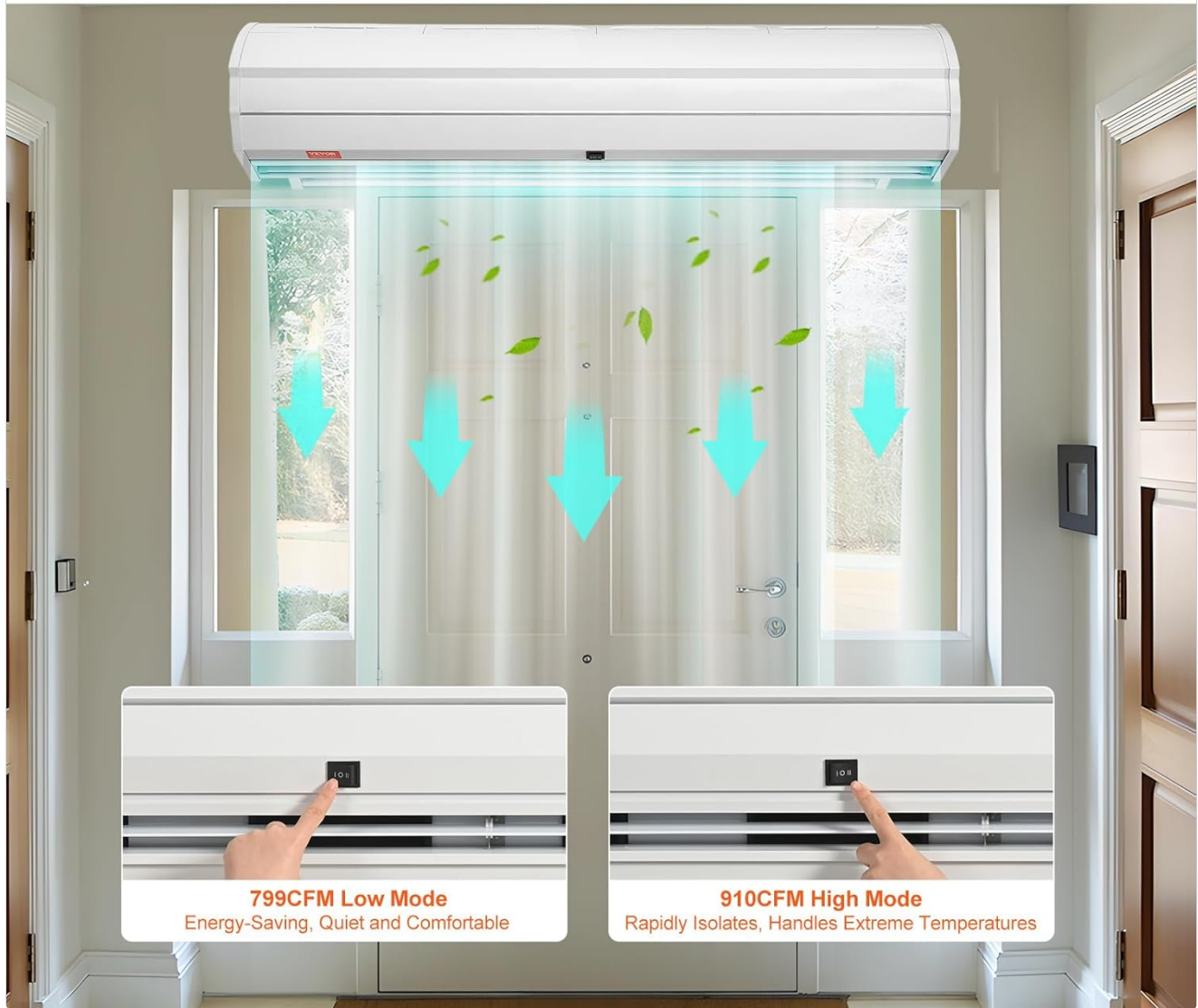
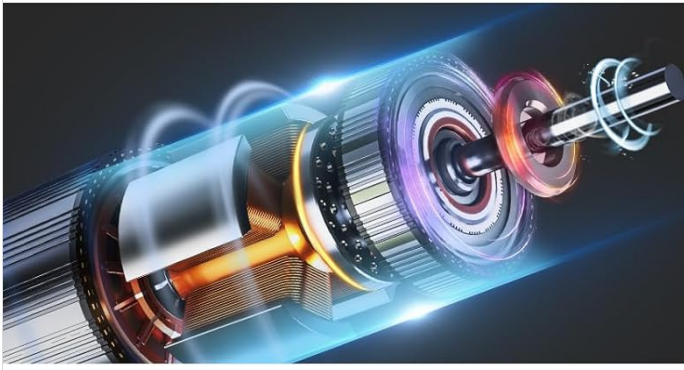


Figure 4: Two-speed settings for adaptable performance.

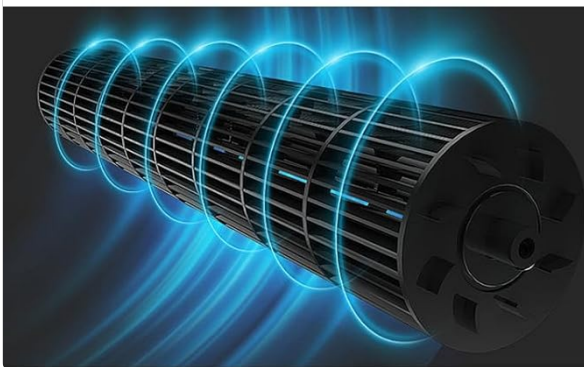
SLIM METAL BODY

Rust-Resistant and Durable for Peace of Mind



Pure Copper Motor
Runs More Stable

Metal Shell & Air Outlet
Rust-Resistant and Long-Lasting



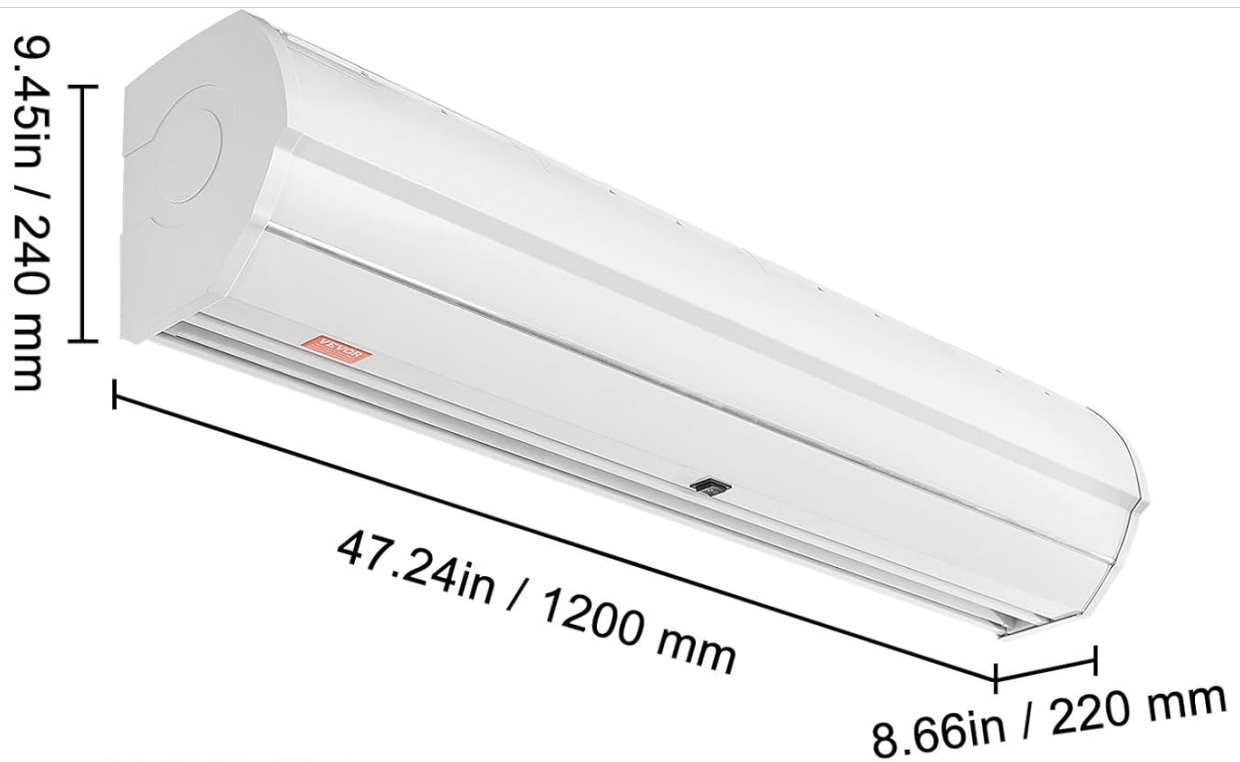
Large Diameter Fan Blades
High Airflow, Low Noise

Figure 5: Internal components highlighting durability and efficiency.

3. INCLUDED COMPONENTS

The package includes the following items:

- 1 x Air Curtain Unit
- 1 x Swing-Type Stroke Switch (Magnetic Door Switch)
- Mounting Bracket Plates x 3
- Various screws and nuts for installation (M4x6 Nuts, M4x36 Self-tapping Screws x 2, M4x20 Self-tapping Screws x 2, M4x28 Screws x 4, M4x18 Screws x 2, M6x16 Round Head Screws x 4)



Model: **LFM120-1200**

Door Height (m) Compatibility: **78.74 - 94.49 inch / 2.0-2.4 m**

Product Dimensions: **47.24 x 8.66 x 9.45 inch / 1200 x 220 x 240 mm**

Accessories

Swinging Stroke Switch x 2	M4×28 Screws x 4
M4 Nuts x 6	M4×18 Screws x 2
M4×36 Self-tapping Screws x 2	M6×16 Round Head Screws x 4
M4×20 Self-tapping Screws x 2	Mounting Bracket Plates x 3

Figure 6: Product dimensions and included accessories.

4. SAFETY INSTRUCTIONS

- Read all instructions before installation and operation.
- Ensure the power supply matches the unit's requirements (110V).
- Do not insert fingers or objects into the air inlet or outlet while the unit is operating.
- Keep the unit away from water or excessive moisture.
- Installation should be performed by a qualified professional if you are unsure.
- Ensure the unit is securely mounted to prevent falling.

5. SETUP AND INSTALLATION

Follow these steps for proper installation of your VEVOR Air Curtain:

1. **Unboxing and Inspection:** Carefully remove the air curtain from its packaging. Inspect the unit for any shipping

damages.

2. **Prepare for Mounting:** Ensure a 10cm (approximately 4 inches) gap from the ceiling for optimal air intake. Unscrew and remove the back mounting plate from the air curtain unit.
3. **Mounting Plate Installation:** Secure the mounting plate to the wall above the doorway using appropriate fasteners (screws and nuts provided). Ensure it is level and firmly attached to a sturdy surface.
4. **Hang the Air Curtain:** Carefully hang the main air curtain body onto the installed mounting plate. Tighten the bottom screws to secure the unit in place.
5. **Connect Magnetic Switch:** Attach the magnetic door switch components to the door edge and frame. Connect the two yellow wires from the air curtain to the magnetic switch. Ensure the magnetic pieces align for proper function.

EASY INSTALLATION IN FIVE SIMPLE STEPS

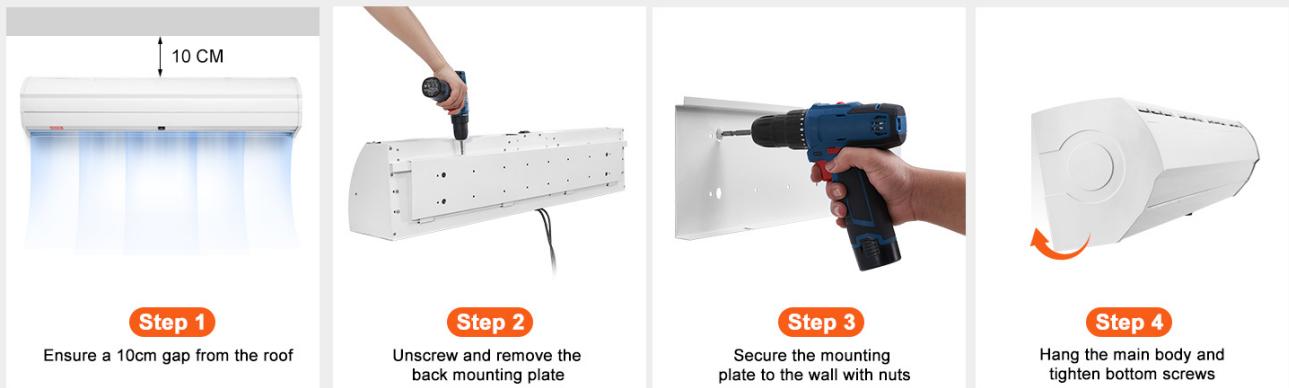


Figure 7: Easy installation in five simple steps.

Your browser does not support the video tag.

Video 1: Product Overview and Unboxing. This video demonstrates the unboxing process and provides a general overview of the air curtain unit and its components.

Your browser does not support the video tag.

Video 2: Easy Magnetic Switch Installation. This video illustrates the simple installation process for the magnetic door switch, ensuring automatic operation of the air curtain.

6. OPERATING INSTRUCTIONS

The VEVOR Air Curtain offers simple operation with two-speed settings and an optional magnetic door switch for automated control.

- **Power On/Off:** Use the main power switch on the unit to turn the air curtain on or off.
- **Speed Selection:** Select between two fan speeds (Low and High) using the designated switch or remote control (if included). Low speed is ideal for energy efficiency and minimal noise, while high speed provides robust isolation for extreme conditions.
- **Automatic Operation (with Magnetic Switch):** If the magnetic door switch is installed and connected, the air curtain will automatically activate when the door opens and turn off when the door closes. This ensures convenience and energy savings.

COMES WITH 2 TYPES OF SWITCHES

Easy Installation – Horizontal or Sliding Door



Figure 8: Magnetic door switches for automatic operation.

7. MAINTENANCE

Regular maintenance ensures optimal performance and longevity of your air curtain.

- **Cleaning:** Periodically wipe the exterior of the unit with a soft, damp cloth. Ensure the air intake and outlet grilles are free from dust and debris. Do not use abrasive cleaners or solvents.
- **Inspection:** Regularly check the power cord for any damage. Inspect the mounting hardware to ensure the unit remains securely attached to the wall.
- **Fan Blades:** If accessible, ensure the fan blades are clean and free from obstructions.

8. TROUBLESHOOTING

If you encounter issues with your air curtain, refer to the following common troubleshooting steps:

- **Unit Not Turning On:**
 - Check if the power cord is securely plugged into a working outlet.
 - Ensure the main power switch on the unit is in the 'ON' position.

- If using the magnetic switch, verify it is correctly installed and aligned, and the door is open.
- **Weak Airflow:**
 - Check if the air intake and outlet grilles are obstructed by dust or debris. Clean if necessary.
 - Ensure the unit is set to the desired speed (High for stronger airflow).
- **Unusual Noise:**
 - Inspect for any loose parts or foreign objects inside the unit.
 - Ensure the unit is securely mounted and not vibrating against the wall.

If the problem persists after attempting these steps, contact VEVOR customer support for assistance.

9. SPECIFICATIONS

Attribute	Value
Brand	VEVOR
Model Number	LFM120-1200-E
Product Dimensions	47.24 x 8.66 x 9.45 inches (1200 x 220 x 240 mm)
Item Weight	32 pounds
Airflow (CFM)	1200
Speed Settings	2 (Low, High)
Voltage	110V
Noise Level	63.5 Decibels (63.7±5dB)
Form Factor	Wall Mounted
Assembly Required	Yes
Color	White

10. WARRANTY AND SUPPORT

VEVOR products are designed for durability and performance. For warranty information, technical support, or service inquiries, please refer to the contact details provided in your product packaging or visit the official VEVOR website. Keep your purchase receipt as proof of purchase for warranty claims.