

FIREGAS FGS-ESB09S52AC

FIREGAS FGS-ESB09S52AC 52cm Built-in Extractor Hood User Manual

Model: FGS-ESB09S52AC | Brand: FIREGAS

- [Contents](#)
- [Specifications](#)
- [Installation](#)
- [Operation](#)
- [Maintenance](#)
- [Troubleshooting](#)
- [Support](#)

1. SAFETY INFORMATION

Please read this manual carefully before using your FIREGAS extractor hood. Keep it for future reference.

- Ensure the power supply matches the rating label on the appliance.
- Installation must be carried out by a qualified person in accordance with local regulations.
- Do not operate the appliance if the power cord is damaged.
- Always disconnect the appliance from the power supply before cleaning or maintenance.
- This appliance is not intended for use by persons (including children) with reduced physical, sensory or mental capabilities, or lack of experience and knowledge, unless they have been given supervision or instruction concerning use of the appliance by a person responsible for their safety.
- Children should be supervised to ensure that they do not play with the appliance.
- There is a fire risk if cleaning is not carried out in accordance with the instructions.
- Do not flambé under the range hood.
- The air must not be discharged into a flue that is used for exhausting fumes from appliances burning gas or other fuels.

2. PACKAGE CONTENTS

Verify that all items are present and in good condition upon unpacking.

Package Includes



Filtration System



Carbon Filter(Model No:CC110)



Aluminium Filter

Installation Accessories



Air Dampers



Screw



Installation Instruction



Manual

Image: The package includes the extractor hood, two carbon filters (Model No: CC110), air dampers, screw packs, installation instructions, and the user manual.

- FIREGAS FGS-ESB09S52AC Extractor Hood
- 2 x Carbon Filters (Model No: CC110)
- Air Dampers
- Screw Packs for Installation
- Installation Instruction Manual
- User Manual

3. SPECIFICATIONS

Feature	Specification
Model Number	FGS-ESB09S52AC

Brand	FIREGAS
Dimensions (L x W x H)	52.5 x 29.1 x 27.6 cm
Weight	5.93 Kilograms
Material	Stainless Steel
Airflow Capacity	308 m ³ /h
Number of Speeds	3
Noise Level	63 Decibels
Light Source Type	LED (2W)
Filter Type	Aluminum Grease Filter, Carbon Filter (for recirculation)
Ventilation Type	Ducted/Vented, Ductless/Recirculating
Control Type	Push Button
Energy Efficiency Class	C (A+++ to D scale)

4. INSTALLATION

The FIREGAS FGS-ESB09S52AC extractor hood is designed for built-in installation within a cabinet, offering both ducted (extraction) and ductless (recirculation) ventilation options.

4.1 Pre-Installation Checks

Before beginning installation, ensure the cabinet opening dimensions are suitable for the hood. The recommended mounting height above the cooking surface is 550-650 mm.



Image: Diagram showing the suitable mounting height of 550-650 mm from the cooking surface to the bottom of the hood.



Image: Detailed dimensions of the extractor hood: 525mm width, 291mm depth, 276mm height, with internal cabinet cutout dimensions of 494mm width and 258mm depth.

4.2 Installation Steps

1. **Prepare the Cabinet Opening:** Ensure the cabinet opening is correctly sized (approx. 494mm x 258mm) and any necessary reinforcements are in place.
2. **Mark Drilling Points:** Use the provided template or measure carefully to mark the 8 drilling points on the top and sides of the cabinet where the hood will be secured.

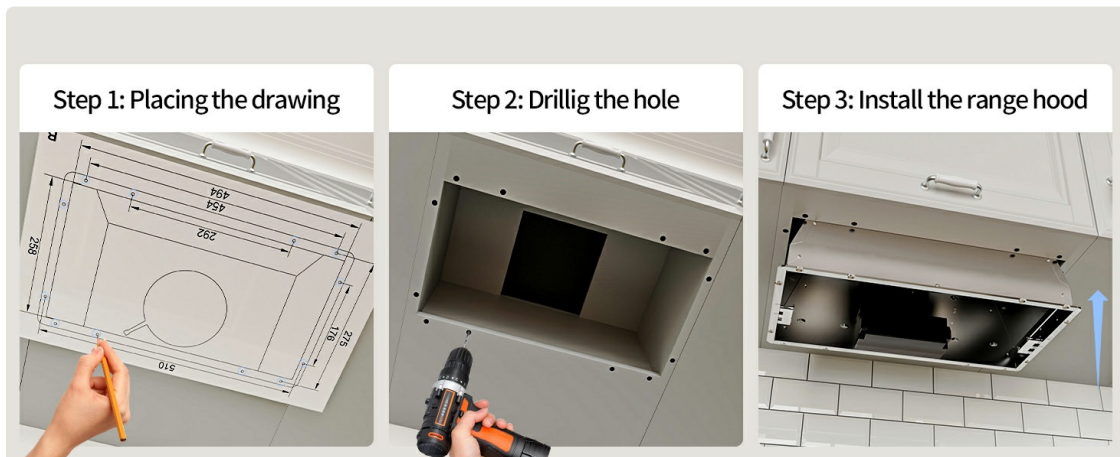


Image: Visual guide for the first three installation steps: 1. Placing the drawing/template, 2. Drilling

the holes, 3. Installing the range hood into the cabinet.

3. **Drill Holes:** Drill pilot holes at the marked points.
4. **Place the Hood:** Carefully lift the hood and insert it into the cabinet opening.
5. **Secure the Hood:** Use the provided screws (st4x40) to firmly fix the hood to the cabinet from the inside.

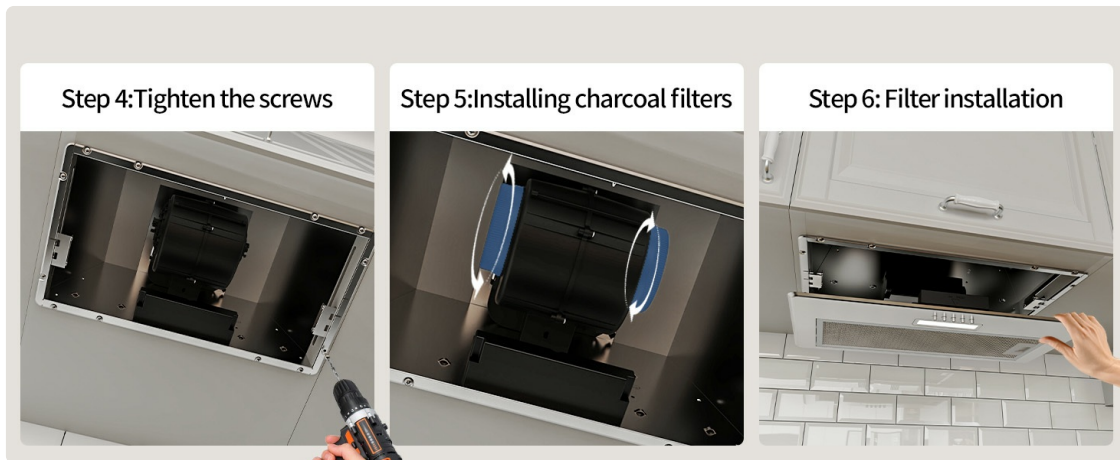


Image: Visual guide for the final installation steps: 4. Tightening the screws, 5. Installing charcoal filters (for recirculation mode), 6. Installing the aluminum filter.

6. **Connect Power:** Plug the hood into a standard power outlet.

4.3 Ventilation Mode Setup

Your hood supports both ducted and recirculation modes.

- **Ducted Mode:** If you choose ducted mode, connect a suitable duct (not included) to the exhaust outlet on top of the hood. Ensure the air dampers are correctly installed to prevent backflow. This mode directly expels cooking fumes and odors outside.
- **Recirculation Mode:** For recirculation mode, install the two provided carbon filters (Model No: CC110) onto the motor housing. These filters absorb odors and grease, returning purified air to the kitchen. Ensure the air dampers are in place.

5. OPERATING INSTRUCTIONS

The FIREGAS FGS-ESB09S52AC features simple push-button controls for ease of use.



3 Speed Settings

Image: A hand operating the push-button controls for the 3 speed settings on the extractor hood.

1. **Power On/Off:** Press the power button (usually marked with a circle and a vertical line) to turn the hood on or off.
2. **Adjust Fan Speed:** The hood offers 3 fan speeds. Press the corresponding speed button (I, II, III) to select your desired extraction level. Speed I is for light cooking, Speed II for medium, and Speed III for heavy cooking fumes.



Max Extraction Rate: 300m³/h

Image: The extractor hood in operation, effectively removing steam from a cooking pot, demonstrating its maximum extraction rate of 300m³/h.

3. **Control LED Lighting:** Press the light button (usually marked with a light bulb icon) to turn the 2W LED lights on or off. This provides ample illumination for your cooking area.



65 Watts LED light

Image: The extractor hood with its 65 Watts LED light turned on, brightly illuminating the cooking surface below.

6. MAINTENANCE

Regular maintenance ensures optimal performance and longevity of your extractor hood.

6.1 Cleaning the Aluminum Grease Filter

The multi-layer aluminum grease filter effectively traps grease and is washable for reuse.



Image: Close-up of the aluminum filter on the extractor hood, highlighting its durable, rustproof, efficient, easy-to-clean, and odor-free properties.

1. **Removal:** Locate the latch on the aluminum filter and pull it down to release the filter.
2. **Cleaning:** Wash the filter by hand in warm soapy water or in a dishwasher. Ensure it is completely dry before re-installation.

Easy to Install



High Efficiency Filtration



Easy to Clean



Image: A hand cleaning the aluminum filter under running water in a sink, demonstrating the 'Easy to Clean' feature.

3. **Re-installation:** Slide the dry filter back into its slot and push the latch up until it clicks into place.

6.2 Replacing Carbon Filters (Recirculation Mode)

If using recirculation mode, the carbon filters (Model No: CC110) must be replaced regularly to maintain odor absorption efficiency. The frequency depends on usage.

1. **Access:** Remove the aluminum grease filter to access the carbon filters.
2. **Removal:** Twist the old carbon filters counter-clockwise to detach them from the motor housing.
3. **Installation:** Place new carbon filters onto the motor housing and twist clockwise until securely locked.
4. **Re-install Grease Filter:** Replace the aluminum grease filter.

7. TROUBLESHOOTING

If you encounter any issues with your FIREGAS extractor hood, refer to the following common problems and solutions:

Problem	Possible Cause	Solution
Hood not turning on	No power supply, loose plug, faulty switch	Check power connection, ensure plug is secure, test power outlet, contact support if switch is faulty.
Low suction power	Clogged grease filters, saturated carbon filters, improper ducting, motor issue	Clean aluminum filters, replace carbon filters, check ducting for obstructions or leaks, contact support for motor issues.
Excessive noise	Loose parts, fan obstruction, improper installation	Check for loose screws or components, remove any obstructions from the fan, ensure correct installation, contact support if noise persists.
Lights not working	Blown LED bulb, wiring issue	Replace LED bulb (if replaceable), check wiring connections, contact support for electrical issues.

If the problem persists after attempting these solutions, please contact FIREGAS customer support.

8. WARRANTY AND CUSTOMER SUPPORT

FIREGAS is committed to providing innovative, efficient, and high-quality kitchen appliances. We value customer satisfaction and offer reliable performance.



Image: FIREGAS customer-centric approach, highlighting quick response, after-sales support, lifetime technical assistance, and continuous improvement.

For any questions, technical assistance, or warranty claims, please contact our customer support team. Our dedicated team is ready to provide quick responses and lifetime technical assistance.

Please refer to your purchase documentation for specific warranty terms and contact details.