

Pokitter T6 Max

POKITTER Orca 1080P Projector User Manual

Model: **T6 Max** | Brand: **Pokitter**

1. INTRODUCTION

Thank you for purchasing the POKITTER Orca 1080P Projector. This manual provides essential information for setting up, operating, and maintaining your projector to ensure optimal performance and longevity. Please read this manual thoroughly before use and retain it for future reference.

The POKITTER Orca T6 Max is a versatile 1080P projector featuring WiFi and Bluetooth connectivity, Android 9.0 with access to over 5000 apps, 550 ANSI Lumens brightness, auto focus, 4D keystone correction, and powerful 10W speakers. It supports a large screen size from 40 to 250 inches and HDR10 for enhanced visual quality.

2. PRODUCT OVERVIEW AND COMPONENTS

Familiarize yourself with the main components of your POKITTER Orca T6 Max projector.



Image 2.1: Front view of the POKITTER Orca T6 Max Projector, showing the lens and speaker grille.

What's in the Box:

- POKITTER Orca 1080P Projector (T6 Max)
- Power Adapter
- Remote Control
- User Manual (this document)

3. KEY FEATURES

3.1. Crystal Clear 1080P Resolution with HDR10

Experience stunning visual clarity with native 1920x1080P resolution and support for HDR10, delivering vibrant colors and deep contrasts. The projector also supports 4K decoding for compatible content.

Crystal- Clear 1080P Resolution



4K Decoding



True color restoration
Noise reduction



Image 3.1: Visual representation of the projector's 1080P resolution and HDR10 support, showing enhanced color and detail.

3.2. Instant Auto Focus and 4D Keystone Correction

The projector features automatic focus adjustment for a sharp image every time. Its 4D keystone correction allows for flexible placement, automatically adjusting the image for vertical and horizontal distortions up to ± 40 degrees.

Instant Auto Focus



Image 3.2: Depiction of the auto-focus feature, showing the projector automatically adjusting for clarity.

Instant Auto Focus

$\pm 40^\circ$
Vertical

$\pm 40^\circ$
Horizontal



Image 3.3: Illustration of 4D keystone correction, demonstrating how the projector corrects distorted images from angled projections.

3.3. Integrated Android 9.0 OS with 5000+ Apps

With Android 9.0 built-in, access a vast library of over 5000 applications directly from the Google Play Store, including popular streaming services like Netflix, YouTube, and more. This provides endless entertainment without needing external devices.

Endless Entertainment

androidtv 9.0

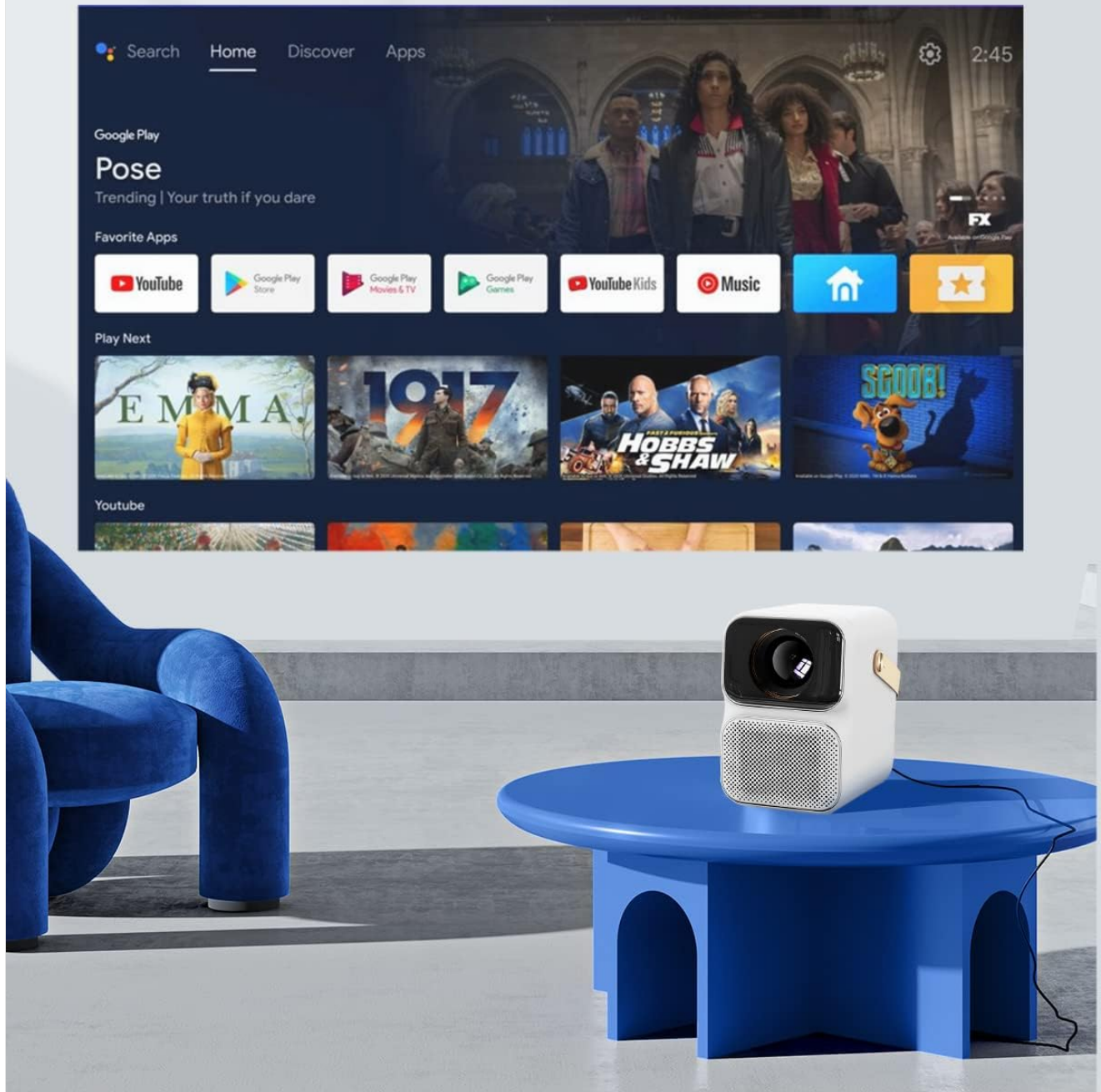


Image 3.4: Screenshot of the Android 9.0 home screen on the projector, showing various app icons.

3.4. Powerful 10W Hi-Fi Speakers

Enjoy immersive audio with the integrated 10W Hi-Fi speakers, providing a rich and clear sound experience for your movies, music, and games.

10W Hi-Fi Speakers

Home Theater Surround Sound

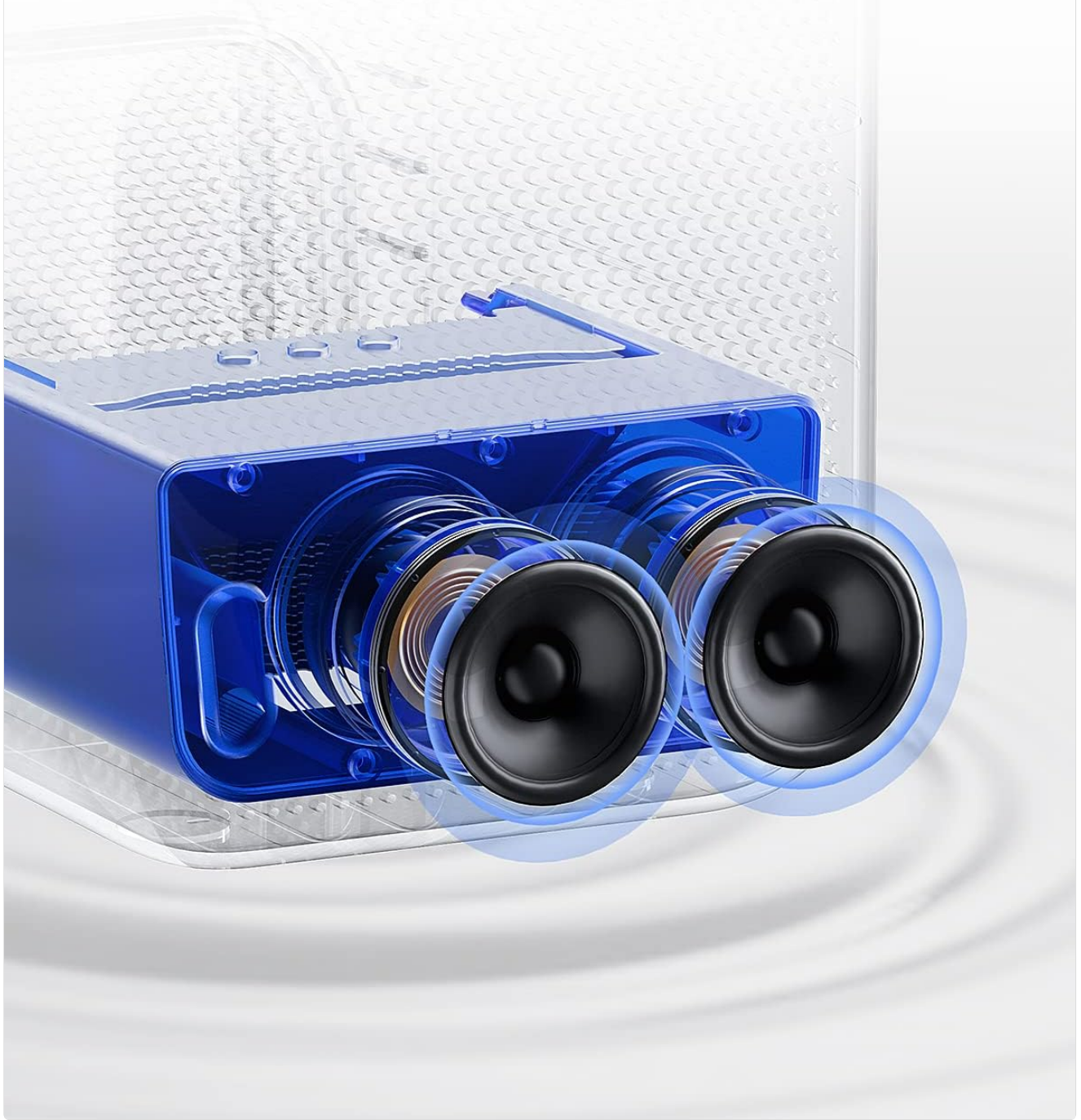


Image 3.5: Close-up internal view of the projector's 10W Hi-Fi speakers.

4. SETUP GUIDE

4.1. Initial Placement

Place the projector on a stable, flat surface. Ensure there is adequate ventilation around the device. For optimal viewing, position the projector perpendicular to the projection surface. The recommended projection distance for a 40-250 inch screen is between 1.2 to 7.5 meters (approximately 3.9 to 24.6 feet).

4.2. Power Connection

1. Connect the power adapter to the DC IN port on the projector.

2. Plug the other end of the power adapter into a wall outlet.
3. The power indicator light will illuminate.

4.3. Powering On/Off

Press the power button on the top of the projector or on the remote control to turn the device on or off.

Your browser does not support the video tag.

Video 4.1: This video demonstrates how to power on the Pokitter T6 Max Projector and shows the initial auto-focus sequence. The projector is turned on by pressing the power button, and the lens adjusts to achieve a clear image on the screen.

4.4. Initial Setup (Android 9.0)

Upon first power-on, the projector will guide you through a quick setup process for the Android 9.0 operating system. Follow the on-screen prompts to connect to Wi-Fi, log in to your Google account, and configure basic settings.

Note: For optimal navigation within certain apps like Netflix, a mouse may be required as the remote control might not fully support all app functionalities.

5. OPERATING INSTRUCTIONS

5.1. Navigation and Interface

Use the remote control to navigate the Android 9.0 interface. The main screen provides access to installed applications, settings, and media inputs.

5.2. Adjusting Focus and Keystone

The projector features automatic focus. If manual adjustment is needed, use the focus wheel on the side of the projector. Keystone correction is also automatic, but can be fine-tuned in the settings menu if required.

5.3. Screen Mirroring (Miracast)

The projector supports Miracast for screen mirroring from compatible devices. Access the Miracast application from the home screen and follow the instructions to connect your smartphone or tablet.

5.4. Using External Storage

The USB port on the projector is designed for connecting external storage devices (e.g., USB flash drives) to play media files. It does not support direct screen casting from phones via USB.

6. CONNECTIVITY

The POKITTER Orca T6 Max offers multiple connectivity options:

- **Wi-Fi:** Built-in Wi-Fi for internet access and streaming.
- **Bluetooth:** Connect external Bluetooth speakers or headphones for enhanced audio.
- **HDMI:** Connect external devices such as laptops, gaming consoles, or TV sticks.
- **USB:** For connecting USB storage devices.

6.1. Connecting to Wi-Fi

1. Go to *Settings* on the home screen.
2. Select *Network & Internet*.

- 3. Choose your Wi-Fi network and enter the password.

6.2. Connecting Bluetooth Devices

- 1. Go to *Settings* on the home screen.
- 2. Select *Connected Devices*.
- 3. Turn on Bluetooth and select *Pair new device*.
- 4. Choose your Bluetooth device from the list to pair.

7. MAINTENANCE

7.1. Cleaning the Lens

Use a soft, lint-free cloth specifically designed for optical lenses to gently wipe the projector lens. Do not use abrasive cleaners or excessive force, as this can scratch the lens.

7.2. Ventilation

Ensure the projector's ventilation ports are clear of obstructions to prevent overheating. Regular cleaning of dust from the vents can help maintain optimal performance and extend the projector's lifespan.

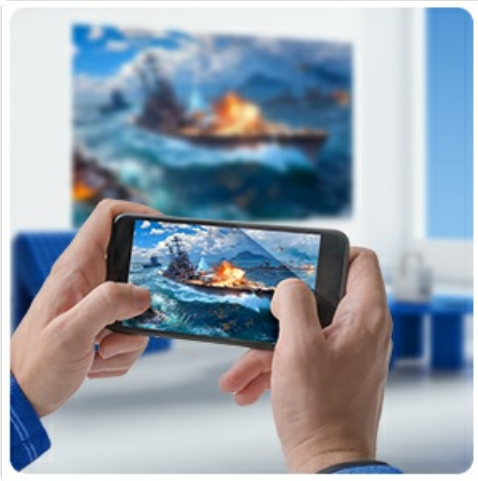


Image 7.1: Diagram showing the internal cooling system of a projector, highlighting the importance of clear ventilation.

7.3. Storage

When not in use for extended periods, store the projector in a cool, dry place, away from direct sunlight and excessive dust. Consider using a protective cover.

8. TROUBLESHOOTING

Problem	Possible Cause	Solution
No audio output from HDMI streaming device.	Audio output setting on the external device is incorrect.	Set the audio output of the external streaming device to HDMI.

Problem	Possible Cause	Solution
Cannot directly connect phone for screen casting via USB.	USB port is for external storage only.	Use Wi-Fi based screen mirroring (Miracast) or connect via HDMI adapter (not included).
Netflix app not working or requires a mouse.	Pre-installed Netflix app might be outdated or not fully remote-compatible.	Uninstall the current Netflix app, then download and install it from Google Play Store. A mouse may be needed for navigation.
Feeling dizzy or uncomfortable while watching.	Inappropriate screen position/size or prolonged viewing.	Adjust screen height so the center aligns with eye level or the bottom edge is below eye level. Ensure screen size is within effective field of view to avoid head turning. Take breaks during long viewing sessions.

9. SPECIFICATIONS

Feature	Detail
Brand	Pokitter
Model Number	T6 Max
Display Resolution	1920 x 1080 (Native 1080P)
Brightness	550 ANSI Lumens
Operating System	Android 9.0
Connectivity Technology	Bluetooth, HDMI, USB, Wi-Fi
Special Features	Built-In Wi-Fi, Auto Focus, Built-In Speaker, Lightweight, Dust-Proof, Built-In Handle, Portable, HDR10 Support, 4K Decoding
Speaker Type	Stereo (10W)
Item Weight	6.93 pounds
Product Dimensions	5 x 5 x 8 inches
Visible Screen Diagonal	250" / 635 cm (Max)

10. WARRANTY AND SUPPORT

10.1. Product Warranty

For information regarding the product warranty, please refer to the warranty card included with your purchase or contact Pokitter customer support directly. Standard return policy allows for returns within 30 days.

10.2. Extended Protection Plans

Extended protection plans are available for purchase to cover your device beyond the standard warranty. Options include 2-Year and 3-Year protection plans, as well as a monthly "Complete Protect" plan.




- 2-Year Protection Plan
- 3-Year Protection Plan
- Complete Protect (monthly plan)



10.3. Customer Support

If you encounter any issues or have questions not covered in this manual, please contact Pokitter customer service. You can often find contact information on the official Pokitter website or through the retailer where you purchased the product.

Visit the official Pokitter Store for more information:[Pokitter Store](#)

Related Documents - T6 Max

	<p>Pokitter T2 Max Portable Projector User Manual</p> <p>User manual for the Pokitter T2 Max portable projector, covering setup, safety precautions, features, installation, adjustment, and mobile phone projection.</p>
	<p>Pokitter Tower Ceramic Heater with Remote Control Instruction Manual</p> <p>Instruction manual for the Pokitter Tower Ceramic Heater with Remote Control, model PKT-PTC1200PRO. Includes safety instructions, operation, maintenance, and warranty information.</p>
	<p>E GATE Projector User Manual: Setup, Connections, Maintenance, and Troubleshooting</p> <p>Comprehensive user manual for E GATE projectors, covering setup, connections, maintenance, troubleshooting, and warranty information. Learn how to connect devices, optimize performance, and care for your projector.</p>

	<p>EPV Dark Star Max UST-FR User's Guide: Safeguards, Maintenance, Operation, and Installation</p> <p>This user guide provides essential information for the EPV Dark Star Max UST-FR Floor Rising Ceiling Ambient Light Rejecting Screen. It covers safety precautions, screen maintenance, FCC compliance, parts identification, control methods, remote operation, battery instructions, anti-pinch features, and crucial projector placement guidelines for optimal performance.</p>
	<p>Android Car Stereo Installation and User Guide for Ford Vehicles</p> <p>Comprehensive guide for installing and operating an Android car stereo system designed for Ford Focus, S-Max, Mondeo, Galaxy, C-Max, and Kuga models. Covers wiring, setup, features like Carplay/Android Auto, and troubleshooting.</p>