

## IKK M-MJ-CH-ISL0802

# IKK Modern Rectangle Gold Crystal Chandelier User Manual

Model: M-MJ-CH-ISL0802

## INTRODUCTION

---

Thank you for choosing the IKK Modern Rectangle Gold Crystal Chandelier. This elegant lighting fixture is designed to enhance the ambiance of your dining room, kitchen island, living room, or other suitable indoor spaces. Featuring 100% handcrafted water ripple glass and a gold matte coated metal frame, this chandelier brings a unique, nature-inspired aesthetic to your home. Please read this manual thoroughly before installation and use to ensure safe and proper operation.



Figure 1: IKK Modern Rectangle Gold Crystal Chandelier

## SAFETY INFORMATION

---

- Always turn off the power at the main circuit breaker before beginning installation or performing any maintenance.
- Consult a qualified electrician if you are unsure about the installation process.
- Ensure all wiring connections are secure and comply with local electrical codes.
- Do not exceed the maximum wattage specified for the bulbs (Max 40 Watts per bulb).
- Handle glass components with care to prevent breakage. Gloves are recommended during assembly.
- This fixture is designed for indoor use only. Do not expose to moisture.

## WHAT'S IN THE BOX

---

Carefully unpack all components and inspect for any damage. Keep all packaging materials until you are satisfied with the product.

- Chandelier Frame (Gold Matt Coating Metal)
- Water Ripple Glass Panels (Handcrafted)
- Adjustable Hanging Rods/Tubes (Multiple lengths for height adjustment)
- Canopy (US Standard size: L14" x W4.3" x H1.1")
- Mounting Hardware (Screws, wire nuts, etc.)
- Extra Spare Crystals
- Gloves
- Detailed Installation Manual (Paper copy)

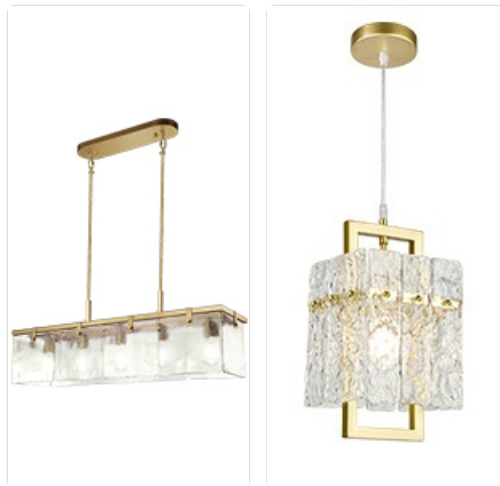


Figure 2: Included accessories (extra crystals, gloves) and recommended bulb types (bulbs not included).

## SETUP AND INSTALLATION

---

The chandelier arrives pre-assembled for the main frame. The glass panels and hanging rods require assembly. A detailed installation video is available for reference.

### 1. Pre-Installation Checks

1. Turn off power at the circuit breaker.
2. Ensure the mounting location can support the chandelier's weight (approx. 32 lbs).
3. Verify all components are present and undamaged.

### 2. Assembly Steps

1. Attach the hanging rods to the chandelier frame. The height is adjustable from 4" to 60" by changing the combination of rods (4", 12", 20" sections provided).
2. Securely mount the canopy to the ceiling junction box using the provided hardware. This fixture works on both flat and slanted ceilings.
3. Connect the electrical wires (live, neutral, ground) from the chandelier to the corresponding wires in the ceiling junction box. Ensure connections are tight.
4. Carefully attach each water ripple glass panel to the chandelier frame using the small screws. Wear gloves to avoid fingerprints.
5. Install 6 E12 base bulbs (not included). LED, CFL, incandescent, or vintage filament bulbs are compatible.

## DIMENSION

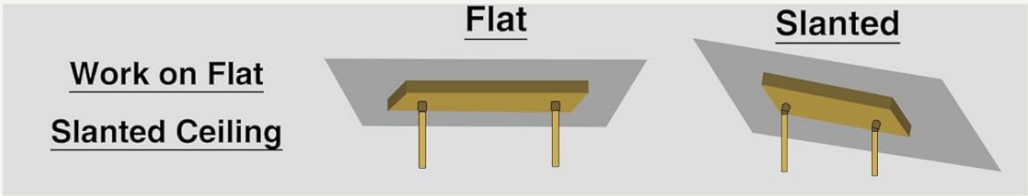


Figure 4: Detail of the handcrafted water ripple glass panels.



# ELEGANT AND UNIQUE

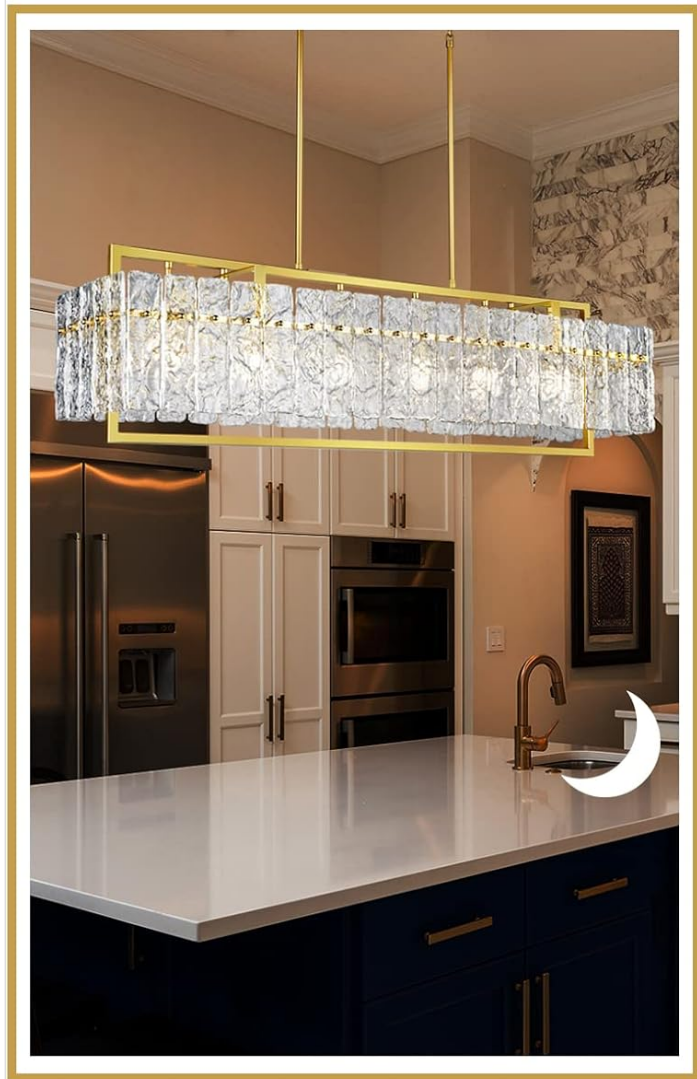


Figure 5: Chandelier appearance in different lighting conditions (day and night).

## MAINTENANCE

- **Cleaning:** Turn off power and allow the fixture to cool. Wipe the metal frame with a soft, dry cloth. For glass panels, use a soft, damp cloth with a mild glass cleaner if necessary, then dry immediately. Avoid abrasive cleaners or solvents.
- **Bulb Replacement:** Ensure power is off. Allow bulbs to cool before replacing. Use only E12 base bulbs, max 40 watts per bulb.
- **Inspection:** Periodically check all connections and components for tightness and wear.

## TROUBLESHOOTING

Problem	Possible Cause	Solution
Light does not turn on	No power to fixture; Loose wiring; Faulty bulb	Check circuit breaker. Verify all wire connections. Replace bulb(s).

Problem	Possible Cause	Solution
Flickering lights	Loose bulb; Incompatible dimmer switch/bulbs	Tighten bulbs. Ensure dimmer and bulbs are compatible and rated for dimming.
Glass panels appear uneven	Handcrafted nature of glass; Installation alignment	Minor variations are inherent to handcrafted glass. Re-adjust panels if possible, ensuring screws are tightened evenly.

## SPECIFICATIONS

Feature	Detail
Brand	IKK
Model Number	M-MJ-CH-ISL0802
Dimensions (L x W x H)	42" x 11" x 12" (Fixture only)
Adjustable Hanging Height	4" - 60"
Canopy Size	L14" x W4.3" x H1.1"
Weight	Approx. 32 lbs
Material	Glass, Metal
Color	Gold (Frame), Clear (Glass)
Bulb Base	E12
Number of Light Sources	6
Max Wattage per Bulb	40 Watts
Input Voltage	110V
Dimmable	Yes (with compatible bulbs and dimmer switch)
Installation Type	Semi Flush Mount / Hanging
Room Type Compatibility	Dining Room, Kitchen Island, Living Room, Foyer, Bedroom, Bathroom

## WARRANTY AND SUPPORT

IKK provides a **3-Year Guarantee** for this product. In case of any loss or damage during transportation, or for any technical assistance, please contact our customer support.

**Customer Support:** Available 24/7. You can reach us by navigating to "YOUR ACCOUNT" > "YOUR ORDER" > "CONTACT SELLER" on the platform where you purchased the product.

