

## MAYFLASH MAGIC-S PRO 2

# MAYFLASH Magic-S PRO 2 Wireless Bluetooth USB Adapter Instruction Manual

Model: MAGIC-S PRO 2 (RH204RH)

## 1. INTRODUCTION

This manual provides detailed instructions for the setup, operation, maintenance, and troubleshooting of the MAYFLASH Magic-S PRO 2 Wireless Bluetooth USB Adapter. Please read this manual thoroughly before using the product to ensure optimal performance and longevity.

## 2. PRODUCT OVERVIEW

The MAYFLASH Magic-S PRO 2 is a versatile wireless Bluetooth USB adapter designed to enhance your gaming experience across multiple platforms by allowing the use of a wide range of controllers.

### Key Features:

- Supports 6-axis motion (gyroscope) on PS4 and Switch.
- Supports rumble on PS4, Switch, Xinput, and PS3 with adjustable intensity and dead zone.
- Supports Turbo and Auto Fire with three turbo speeds.
- Supports Touch Pad on PS4.
- Supports Bluetooth headsets on PS4 and Switch (A2DP and HFP connections on PS4 Mode).
- Buttons A, B, X, Y can be exchanged.
- Lag-free performance.
- Includes a customized high-quality USB Type-C Cable.

### Compatibility:

#### System Compatibility:

- PS4, Switch/Switch 2, Steam Deck, macOS, PC Windows, Raspberry Pi, PS3, NEOGEO mini, SNK NEOGEO Arcade Stick PRO, PS Classic Mini, SEGA Genesis Mini, SEGA Mega Drive Mini, Sega Astro City Mini.

#### Controller Compatibility:

- **Bluetooth Controllers:** DualSense (PS5), DualShock 4 (PS4), DualShock 3 (PS3), Xbox Series X/S,

Xbox One Bluetooth controllers, Xbox Elite Wireless Controller Series 2, Switch Pro, Switch Joy-Con, Wii Remote, Wii U Pro.

- **Wired USB Controllers:** DualSense, DualShock 4, DualShock 3, Xbox Bluetooth Controller, Switch Pro, ASTRO Gaming C40 TR Controller PlayStation 4, PlayStation 4 SCUF Vantage 2 Controller, SEGA MEGA DRIVE and SEGA Genesis Mini USB Controller Pads, Logitech rumble gamepad F510 and F310, PS Classic Controller, Switch Taiko Drum, PS4 Taiko Drum.

*Note: Wireless controllers from your console can become wired controllers by connecting a standard USB cable. For best results, use original Switch, Xbox, or PlayStation controllers and quality certified USB cables.*

**Important Note:**

- The MAGIC-S PRO 2 cannot connect MAYFLASH Arcade Sticks F300, F300 Elite, F500, or F500 Elite to play on PS5 for PS5 games.



Image: The MAYFLASH Magic-S PRO 2 USB Adapter, showing its compact design and USB-A connector.

### 3. SETUP

Follow these steps to set up your Magic-S PRO 2 adapter for use with your desired system and controller.

#### Initial Connection:

1. Plug the Magic-S PRO 2 adapter into an available USB port on your gaming console (PS4, Switch, etc.) or PC.
2. The adapter features LED indicators that change color to signify the current operating mode for different systems. Refer to the diagram on the adapter for specific color-to-system mapping (e.g., Blue for PS4/macOS, Red for Switch, Purple for Switch Pro, Green for Xinput, Yellow for PS3/Dinput, Cyan for PS Classic, White for SEGA/NEOGEO).
3. To change modes, hold the button on the side of the adapter for 3-4 seconds until the LED changes to the desired color.
4. For wireless Bluetooth controllers, press the sync button on the adapter (usually a small button near the LED indicators) to enter pairing mode. The LED will typically blink rapidly.
5. Put your Bluetooth controller into pairing mode (refer to your controller's manual for specific instructions).
6. Once paired, the LED on the adapter will become solid, indicating a successful connection.
7. For wired USB controllers, simply connect the controller to the USB port on the Magic-S PRO 2 adapter. The adapter will automatically detect the controller.



Image: The Magic-S PRO 2 adapter connected to a Nintendo Switch console, demonstrating its use with various controllers.



Image: The Magic-S PRO 2 adapter shown with its included USB Type-C cable, facilitating connections to devices with USB-C ports.

### Firmware Update:

It is recommended to update the adapter to the latest firmware from the official MAYFLASH website ([www.mayflash.com](http://www.mayflash.com)) if you encounter any issues, especially with newer controllers like the PS5 DualSense Edge Controller.

## 4. OPERATING INSTRUCTIONS

---

Once connected, the Magic-S PRO 2 adapter allows your compatible controller to function with the selected system, leveraging various advanced features.

### Special Features:

- **6-axis Motion Control:** Supported on PS4 and Switch.
- **Rumble/Vibration:** Supported on PS4, Switch, Xinput, and PS3. The vibration intensity and dead zone can be adjusted to 7 levels.
- **Turbo and Auto Fire:** Activate these functions with 3 available turbo speeds for rapid button presses.

- **Touch Pad:** Supported on PS4.
- **Bluetooth Headsets:** Supported on PS4 and Switch. On PS4 Mode, both A2DP (High quality audio signals) and HFP (Audio and chatting) connections are supported.
- **Button Exchange:** The A, B, X, Y buttons can be exchanged to match your preferred layout.

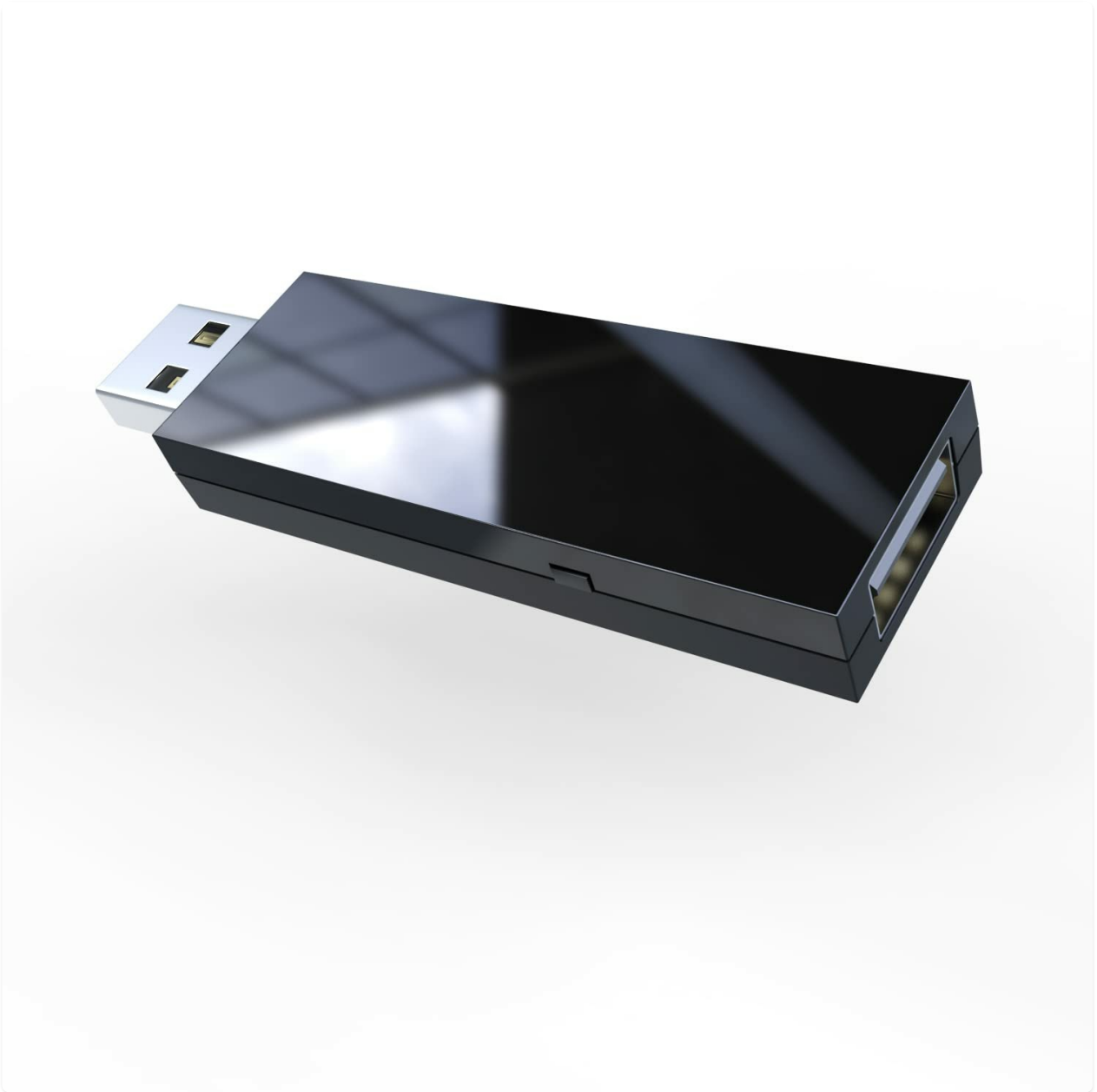


Image: The Magic-S PRO 2 adapter enabling Bluetooth headset usage with a gaming console.



## Support the vibration intensity and dead zone adjusting

Image: Illustration of the adjustable vibration intensity and dead zone features of the Magic-S PRO 2 adapter.

*For detailed instructions on activating specific features like Turbo, Auto Fire, or adjusting rumble/dead zone, please refer to the comprehensive guide available on the official MAYFLASH website or the included quick start guide.*

## 5. MAINTENANCE

---

To ensure the longevity and optimal performance of your MAYFLASH Magic-S PRO 2 adapter, follow these maintenance guidelines:

- Keep the adapter clean and free from dust and debris. Use a soft, dry cloth for cleaning.
- Avoid exposing the adapter to extreme temperatures, humidity, or direct sunlight.
- Do not attempt to disassemble or modify the adapter, as this will void the warranty and may cause damage.
- Store the adapter in a safe place when not in use to prevent physical damage.

## 6. TROUBLESHOOTING

---

If you encounter issues with your Magic-S PRO 2 adapter, consider the following common solutions:

- **Controller Not Connecting:** Ensure the adapter is set to the correct mode for your console (check LED color). Re-initiate pairing mode on both the adapter and the controller. Try connecting the controller via a wired USB cable first to confirm basic functionality.
- **Input Lag:** Ensure the adapter is within optimal range of your wireless controller. Avoid physical obstructions. For critical applications, consider using a wired connection.
- **Firmware Issues:** Always ensure your adapter has the latest firmware. Visit the official MAYFLASH website ([www.mayflash.com](http://www.mayflash.com)) for firmware updates and instructions.
- **No Audio from Headset:** Verify that your headset is properly paired and selected as the audio output device on your console. Ensure the adapter is in a mode that supports Bluetooth audio (e.g., PS4 Mode).
- **Xbox Series S/X Controller Issues:** Update your Xbox Series S/X controller to the latest version if you have connection issues.
- **Switch Console Issues:** Reboot your Switch game console twice if you experience issues using the adapter on Switch.

For more detailed troubleshooting steps or specific error codes, please visit the official MAYFLASH support page or contact their customer service.

## 7. SPECIFICATIONS

Attribute	Value
Model Number	RH204RH
Product Dimensions	2.87 x 0.83 x 0.34 inches
Item Weight	0.39 ounces (11g)
Manufacturer	MAYFLASH
First Available Date	April 25, 2022






## 8. WARRANTY AND SUPPORT

For information regarding product warranty, returns, or technical support, please visit the official MAYFLASH website or contact their customer service directly. Details can typically be found in the 'Support' or 'Contact Us' sections of their website.

[Visit MAYFLASH Official Website for Support](#)

### Related Documents - MAGIC-S PRO 2

	<p><a href="#">Mayflash MAGIC-S PRO 2 USB Wireless Adapter User Manual and Guide</a></p> <p>Comprehensive user manual for the Mayflash MAGIC-S PRO 2 USB Wireless Adapter, detailing system compatibility, controller setup, advanced features like vibration and dead zone adjustment, software updates, and FCC compliance.</p>
---	---

 <p>Mayflash PS5 Adapter: Connect PS4/PS5 Controllers to Joysticks &amp; FPS Adapters</p>	<p><a href="#">MAYFLASH PS5 Adapter: Connect PS4/PS5 Controllers to Joysticks &amp; FPS Adapters</a></p> <p>Enhance your gaming experience with the MAYFLASH PS5 Adapter. This device allows you to connect wired PS4/PS5 controllers to joysticks and FPS gaming adapters for both PS4 and PS5 consoles. Features plug-and-play functionality and easy firmware updates.</p>
 <p>Mayflash MAGIC-S PRO 2 USB Wireless Adapter User Manual</p>	<p><a href="#">Mayflash MAGIC-S PRO 2 USB Wireless Adapter User Manual</a></p> <p>Comprehensive guide to the Mayflash MAGIC-S PRO 2 USB Wireless Adapter, covering system compatibility, controller connections, setup, firmware updates, and advanced features for gaming.</p>
 <p>Mayflash MAGIC-S Ultimate USB Wireless Adapter User Manual</p>	<p><a href="#">Mayflash MAGIC-S Ultimate USB Wireless Adapter User Manual</a></p> <p>User manual for the Mayflash MAGIC-S Ultimate USB Wireless Adapter, detailing its compatibility with various consoles and controllers, setup instructions for wired and wireless connections, and Bluetooth headset usage.</p>
 <p>Mayflash Magic NS Controller Adapter Quick Start Guide</p>	<p><a href="#">Mayflash Magic NS Controller Adapter Quick Start Guide</a></p> <p>A comprehensive quick start guide for the Mayflash Magic NS Wireless Bluetooth Controller USB Adapter, detailing setup for Nintendo Switch, PC, and PS3 with various controllers, LED indicators, mode switching, and software updates.</p>
 <p>MAYFLASH Arcade Stick F500 Elite User Manual and Quick Start Guide</p>	<p><a href="#">MAYFLASH Arcade Stick F500 Elite User Manual and Quick Start Guide</a></p> <p>Comprehensive guide for the MAYFLASH Arcade Stick F500 Elite, detailing its features, operation, and connectivity with various gaming consoles and platforms including PS4, Xbox, Switch, PC, Android, and more. Includes setup instructions and button mapping.</p>