

## UGREEN CM499

# UGREEN AX1800 USB WiFi 6 Adapter User Manual

Model: CM499

## INTRODUCTION

This manual provides detailed instructions for the UGREEN AX1800 USB WiFi 6 Adapter. It covers setup, operation, features, and troubleshooting to ensure optimal performance and a stable wireless connection for your PC or laptop.



Image: The UGREEN AX1800 USB WiFi 6 Adapter, a compact blue device with a USB-A connector.

## SETUP

### 1. Driver Installation

The UGREEN AX1800 USB WiFi 6 Adapter features a built-in driver for Windows 10 and Windows 11, simplifying the installation process.

1. **Insert the Adapter:** Plug the UGREEN AX1800 USB WiFi 6 Adapter into an available USB 3.0 port on your PC or laptop.
2. **Run Setup:** Once inserted, the system should detect the adapter as a storage device. Navigate to 'This PC' or 'My Computer', locate the adapter drive, and double-click the 'Setup.exe' file to begin the driver installation.

3. **Restart System:** Follow the on-screen prompts to complete the installation. A system restart may be required for the changes to take full effect.

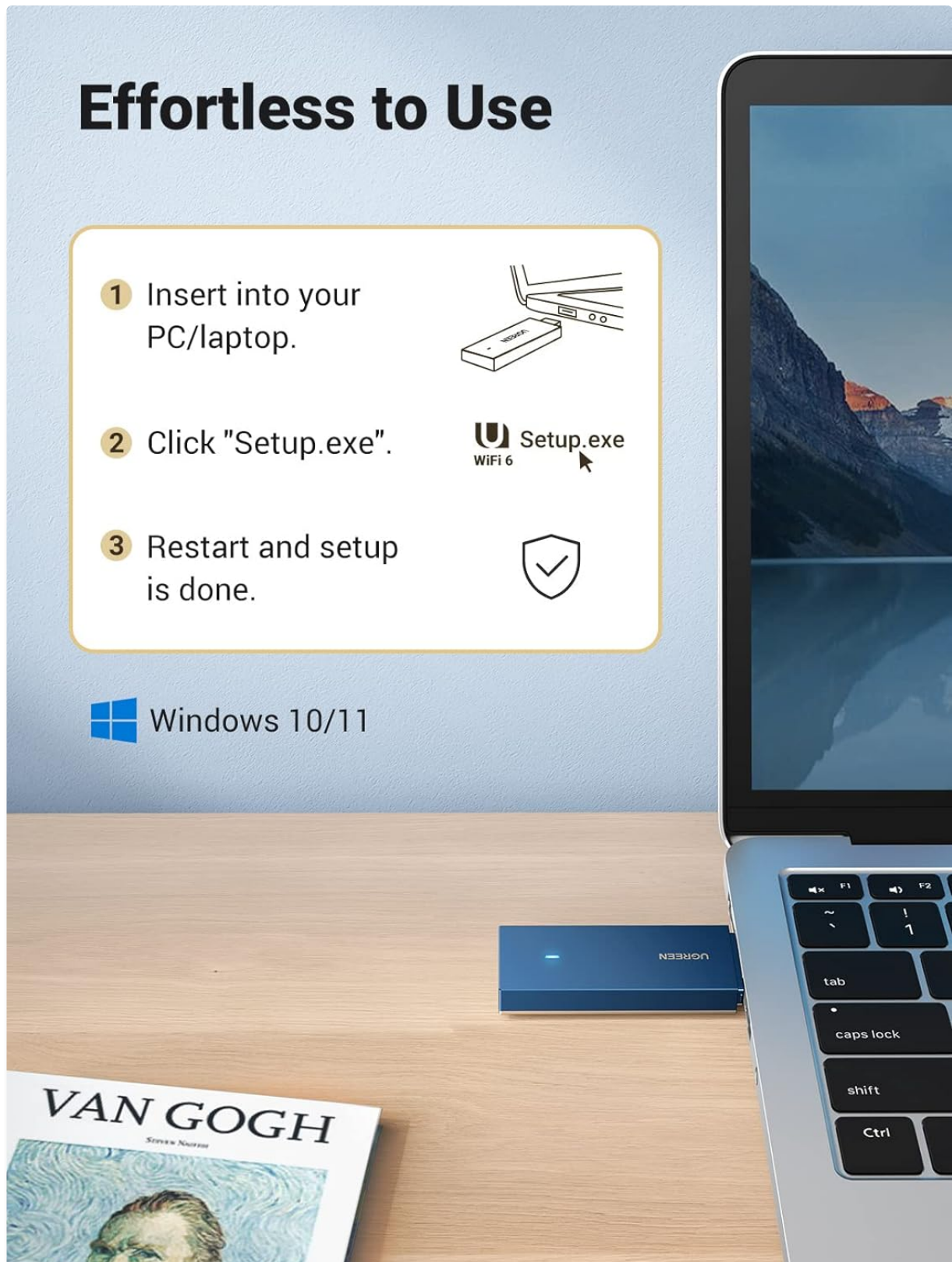


Image: Visual guide showing three steps for easy installation: insert into PC/laptop, click 'Setup.exe', and restart for setup completion.

## 2. Connecting to a Wireless Network

After successful driver installation, you can connect to your Wi-Fi network:

1. **Access Network Settings:** Click on the Wi-Fi icon in your system tray (usually in the bottom-right corner of the screen on Windows).

2. **Select Network:** A list of available Wi-Fi networks will appear. Select your desired network (SSID).
3. **Enter Password:** Enter the network security key (Wi-Fi password) and click 'Connect'.
4. **Verify Connection:** Once connected, the Wi-Fi icon will indicate an active connection.

## OPERATING THE ADAPTER

---

### Dual-Band Functionality

The UGREEN AX1800 adapter supports dual-band operation, utilizing both 2.4 GHz and 5 GHz frequencies. This allows for flexible connectivity based on your needs:

- **2.4 GHz Band:** Offers wider coverage and better penetration through walls, suitable for general internet browsing and devices further from the router.
- **5 GHz Band:** Provides faster speeds and lower latency, ideal for online gaming, 4K video streaming, and other bandwidth-intensive applications, especially when closer to the router.



Image: The UGREEN AX1800 WiFi 6 Adapter highlighting its dual-band capabilities, showing 1201 Mbps on 5 GHz and 574 Mbps on 2.4 GHz.

## Enhanced Wi-Fi 6 Features

The adapter leverages advanced Wi-Fi 6 (802.11ax) technologies to improve your wireless experience:

- **OFDMA (Orthogonal Frequency-Division Multiple Access):** Improves network efficiency by allowing multiple devices to share a single channel, reducing latency and increasing throughput.
- **1024-QAM (Quadrature Amplitude Modulation):** Increases data rates by packing more data into each signal, leading to faster speeds.
- **MIMO (Multiple-Input Multiple-Output) & Beamforming:** These technologies work together to focus



Wi-Fi signals towards connected devices, enhancing signal strength, coverage, and stability, similar to a wired connection.



Image: A desktop computer with the UGREEN WiFi adapter plugged in, illustrating MIMO and Beamforming technologies for stable network performance during gaming.

# Signal Cover Anywhere

Extensive Wifi coverage with internal antenna



Image: A diagram showing a house floor plan with the UGREEN WiFi adapter centrally located, emitting a wide, circular signal to various devices, indicating extensive Wi-Fi coverage.

## Security

The UGREEN AX1800 adapter supports WPA3 encryption, providing enhanced security for your wireless network. WPA3 offers stronger authentication and encryption, protecting your data from unauthorized access and ensuring a safer online experience.

# No More Information Leaks

WPA3 encryption effectively ensures your wireless connection is safe



Image: A person using a laptop with a secure login screen overlaid, emphasizing WPA3 encryption for data protection with the UGREEN WiFi adapter.

## Product Overview Video

Your browser does not support the video tag.

Video: An official UGREEN video showcasing the AX1800 USB WiFi 6 adapter, highlighting its features and benefits for upgrading wireless speed and connectivity on various devices.

## COMPATIBILITY



The UGREEN AX1800 USB WiFi 6 Adapter is designed for broad compatibility with modern computing environments:

- **Operating Systems:** Windows 11, Windows 10, macOS.
- **Devices:** Desktop PCs, Laptops.

## Wide Compatibility

Built-in driver for windows 11/10

### Systems:



Windows 11



Windows 10

### Devices:



Laptop



PC



Image: An illustration showing the UGREEN WiFi adapter's compatibility with Windows 11, Windows 10, laptops, and desktop PCs.

## MAINTENANCE

To ensure the longevity and optimal performance of your UGREEN AX1800 USB WiFi 6 Adapter, consider the following maintenance tips:

- **Keep Drivers Updated:** Periodically check the UGREEN official website for the latest driver updates to ensure compatibility and performance improvements.
- **Physical Care:** Keep the adapter clean and free from dust. Avoid exposing it to extreme temperatures or moisture.
- **Safe Handling:** Always remove the adapter by pulling the USB connector directly, avoiding bending or twisting that could damage the port or the device.

## TROUBLESHOOTING

If you encounter issues with your UGREEN AX1800 USB WiFi 6 Adapter, try the following steps:

- **Adapter Not Detected:** Try plugging the adapter into a different USB port. Ensure the USB port is functional. Restart your computer.
- **Driver Installation Issues:** If the 'Setup.exe' does not run automatically, manually browse the adapter's drive and execute the file. Ensure your operating system is supported (Windows 10/11, macOS).
- **No Wi-Fi Connection:** Verify that your router is powered on and broadcasting a Wi-Fi signal. Double-check your Wi-Fi password. Ensure the adapter's drivers are correctly installed and enabled in Device Manager (Windows) or Network Preferences (macOS).
- **Slow Speed/Unstable Connection:** Ensure you are connected to the 5 GHz band if available and within close proximity to the router for optimal performance. Check for interference from other electronic devices. Update your router's firmware.
- **Intermittent Disconnections:** This could be due to signal interference or outdated drivers. Try moving closer to your router or updating the adapter's drivers.

If problems persist, refer to the UGREEN support website for further assistance.

## SPECIFICATIONS






Brand	UGREEN
Model Number	CM499
Hardware Interface	USB
Data Link Protocol	USB
Data Transfer Rate	1201 Megabits Per Second (5GHz), 574 Megabits Per Second (2.4GHz)
Compatible Devices	Desktop, Laptop
Compatible Operating System Family	MacOS, Windows (10/11)
Product Dimensions	0.79 x 3.78 x 6.14 inches
Item Weight	2.11 ounces (0.06 Kilograms)

## WARRANTY & SUPPORT

UGREEN products are designed for reliability and performance. For information regarding warranty coverage, technical support, or customer service, please visit the official UGREEN website or contact their customer support team directly. Ensure you have your product model number (CM499) and purchase details available when seeking support.

Official UGREEN Store: [UGREEN Store on Amazon](#)

## Related Documents - CM499

	<p><a href="#">UGREEN AC1300 USB WiFi Adapter Troubleshooting Guide</a></p> <p>A troubleshooting guide for the UGREEN AC1300 USB WiFi Adapter, covering common issues like no WiFi signal, connection problems, and slow internet speeds.</p>
	<p><a href="#">UGREEN AC1300 High-Gain Dual-Band Wireless Adapter User Manual</a></p> <p>User manual for the UGREEN AC1300 High-Gain Dual-Band Wireless Adapter (Model CM493). Provides product overview, package contents, driver installation steps for Windows, Wi-Fi connection guide, specifications, and safety notes.</p>
	<p><a href="#">UGREEN AC650 USB WiFi Adapter Troubleshooting Guide</a></p> <p>This guide provides troubleshooting steps for common issues encountered with the UGREEN AC650 USB WiFi Adapter, including no WiFi signal, connection failures, and slow internet speeds.</p>
	<p><a href="#">UGREEN Wi-Fi Adapter Driver Installation Guide</a></p> <p>Step-by-step instructions for installing the UGREEN Wi-Fi Adapter driver. Learn how to connect your device to your network after installation.</p>
	<p><a href="#">UGREEN AX1800 USB WiFi 6 Adapter Driver Installation Guide for Windows 10/11</a></p> <p>Step-by-step guide for installing the UGREEN AX1800 USB WiFi 6 Adapter drivers on Windows 10 and Windows 11. Learn how to connect your device and get online.</p>

UGREEN

Dwupasmowa bezprzewodowa  
karta sieciowa USB AC650 11ac  
Model: CM448 | 17% 20204

Wersja 1.0 | Wersja 1.0 | Wersja 1.0 | Wersja 1.0  
Wersja 1.0 | Wersja 1.0 | Wersja 1.0 | Wersja 1.0  
Wersja 1.0 | Wersja 1.0 | Wersja 1.0 | Wersja 1.0

## [Instrukcja obsługi adaptera Wi-Fi USB dwuzakresowego UGREEN CM448 AC650 11ac](#)

Szczegółowy przewodnik użytkownika dla dwuzakresowego adaptera sieciowego USB UGREEN CM448 AC650 11ac. Zawiera informacje o zawartości opakowania, specyfikacjach technicznych, instrukcji instalacji sterowników, konfiguracji sieci Wi-Fi, środkach ostrożności i zgodności z przepisami.