

[Manuals.plus](#) /

> [AROMA](#) /

> Aroma Housewares ASP-700 Auto Lift Smart Electric Hot Pot & Rapid Boil Steamer User Manual

AROMA ASP-700

Aroma Housewares ASP-700 Auto Lift Smart Electric Hot Pot & Rapid Boil Steamer User Manual

Model: ASP-700

1. PRODUCT OVERVIEW

The Aroma Housewares ASP-700 Auto Lift Smart Electric Hot Pot & Rapid Boil Steamer is a versatile 2.5-liter appliance designed for various cooking methods including hot pot, steaming, boiling, and slow cooking. Its innovative smart lift technology allows for easy separation of ingredients from broth, enhancing your cooking experience.

ALL-IN-1 SMART POT

2.5-liter capacity, perfect for preparing hot pot, soup, porridge, pasta, and healthy steamed favorites.



Figure 1: The Aroma ASP-700 Smart Electric Hot Pot, showcasing its all-in-one capabilities for hot pot, soup, porridge, pasta, and steamed favorites.

Key Features:

- **2.5-Liter Capacity:** Ideal for preparing meals for individuals or small groups.
- **Smart Lift Technology:** Automatically raises and lowers the stainless steel steamer basket for convenient cooking and separation of ingredients.
- **Rapid Boil:** 1200-watt heating element for quick boiling.
- **Intuitive Controls:** LED display with three heat levels (low, medium, high) and three timer modes (30, 60, 90 minutes).
- **Safety Features:** Boil-dry protection, stay-cool pot, handles, and base.
- **BPA-Free:** Constructed with food-safe materials.

2. IMPORTANT SAFEGUARDS

Always follow basic safety precautions when using electrical appliances to reduce the risk of fire, electric

shock, and/or injury to persons.

1. Read all instructions before use.
2. Do not touch hot surfaces. Use handles or knobs.
3. To protect against electrical shock, do not immerse the power cord, plug, or the appliance base in water or other liquid.
4. Close supervision is necessary when any appliance is used by or near children.
5. Unplug from outlet when not in use and before cleaning. Allow to cool before putting on or taking off parts.
6. Do not operate any appliance with a damaged cord or plug, or after the appliance malfunctions or has been damaged in any manner.
7. The use of accessory attachments not recommended by the appliance manufacturer may result in fire, electric shock, or injury.
8. Do not use outdoors.
9. Do not let cord hang over edge of table or counter, or touch hot surfaces.
10. Do not place on or near a hot gas or electric burner, or in a heated oven.
11. Extreme caution must be used when moving an appliance containing hot oil or other hot liquids.
12. Do not use the appliance for other than intended use.
13. This appliance is for household use only.

3. PARTS & FEATURES

Familiarize yourself with the components of your ASP-700 hot pot:

- Clear-view Lid
- 304 Stainless Steel Steamer Basket
- 304 Stainless Steel Inner Pot
- Cool-Touch Exterior
- Electric Power Base
- Touch-Operation Panel

SMART LIFTING

Lift & lower the stainless steel steamer basket with the touch of a button. Boil or steam & separate your hot pot from the broth with our basket lift.

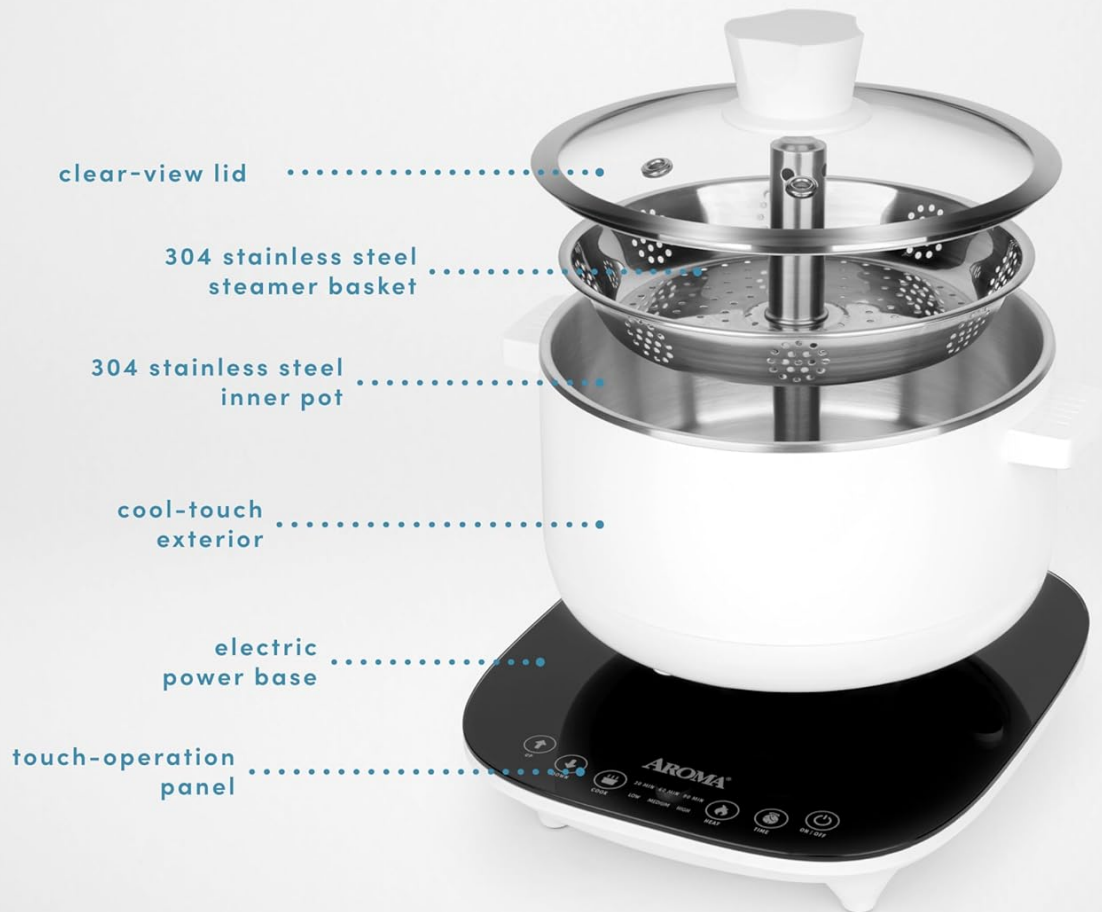


Figure 2: Exploded view of the ASP-700 components, highlighting the smart lifting mechanism.

4. SETUP

Before First Use:

1. Remove all packaging materials, stickers, and labels from the hot pot.
2. Wash the clear-view lid, stainless steel steamer basket, and inner pot with warm, soapy water. Rinse thoroughly and dry completely.
3. Wipe the electric power base with a damp cloth. Do not immerse the base in water.
4. Ensure all parts are dry before assembly.
5. Place the electric power base on a dry, level, heat-resistant surface.
6. Place the inner pot onto the electric power base.
7. Insert the stainless steel steamer basket into the inner pot if using for steaming or smart lift functions.

5. OPERATING INSTRUCTIONS

General Operation:

1. Ensure the hot pot is properly assembled and placed on a stable surface.
2. Plug the power cord into a standard electrical outlet.
3. Press the **ON/OFF** button on the touch-operation panel to power on the unit.
4. Select your desired heat level (**LOW**, **MEDIUM**, or **HIGH**) using the **HEAT** button.
5. Set a cooking time (30, 60, or 90 minutes) using the **TIME** button, if desired.
6. The LED lights will display the selected settings.



Figure 3: The intuitive touch control panel with heat and timer settings.

Using the Smart Lift Function:

The smart lift feature allows you to easily immerse and retrieve ingredients from the broth.

1. Ensure the steamer basket is placed inside the inner pot.
2. Add your broth or water to the inner pot, ensuring it does not exceed the MAX fill line.
3. Add ingredients to the steamer basket.
4. To lower the basket into the broth, press the **DOWN** button.

5. To lift the basket out of the broth, press the **UP** button.
6. This function is ideal for hot pot, allowing you to separate cooked ingredients from the broth without stirring.

EASY TO USE

LED lights display clear settings, no matter what you're cooking. Plus, the BPA-free cooker has a stay-cool pot, handles, and base.



Figure 4: Operating the smart lift function to lower the steamer basket.

Hot Pot / Boiling Function:

1. Fill the inner pot with your desired broth or water.
2. Place the steamer basket inside the pot (optional, for separating ingredients).
3. Select a heat setting (e.g., **HIGH** for rapid boil).
4. Once the liquid is boiling, add your ingredients to the pot or basket.
5. Adjust the heat to maintain a simmer or boil as needed.
6. Use the smart lift function to retrieve cooked items from the broth.



Figure 5: The hot pot in use, filled with a variety of ingredients.

Steaming Function:

1. Add water to the inner pot, ensuring it is below the steamer basket.
2. Place the steamer basket with ingredients into the inner pot.
3. Cover with the clear-view lid.
4. Select a heat setting and desired cooking time.
5. Monitor the water level to prevent boil-dry.



Figure 6: Steaming function in action, preparing shrimp and vegetables.

Official Product Video:

Your browser does not support the video tag.

Video 1: Official Aroma Housewares video demonstrating the features and use of the ASP-700 Smart Electric Hot Pot.

6. CLEANING & MAINTENANCE

Proper cleaning and maintenance will ensure the longevity and optimal performance of your hot pot.

1. Always unplug the appliance and allow it to cool completely before cleaning.
2. The clear-view lid, stainless steel steamer basket, and inner pot are dishwasher safe. Alternatively, wash them with warm, soapy water, rinse, and dry thoroughly.
3. Wipe the exterior of the electric power base with a soft, damp cloth. Do not immerse the base in water or any other liquid.
4. Do not use abrasive cleaners, scouring pads, or steel wool, as these can damage surfaces.

5. For stubborn food residue, soak the inner pot or basket in warm, soapy water for a few minutes before cleaning.
6. Store the hot pot in a dry place when not in use.

7. TROUBLESHOOTING

If you encounter any issues with your hot pot, please refer to the following common problems and solutions:

Problem	Possible Cause	Solution
Appliance does not turn on.	Not plugged in; power outlet not functioning; unit not powered on.	Ensure power cord is securely plugged into a working outlet. Press the ON/OFF button.
Food not cooking evenly.	Incorrect heat setting; too many ingredients.	Adjust heat setting. Avoid overfilling the pot or basket. Stir ingredients occasionally.
Steamer basket not lifting/lowering.	Obstruction; mechanism malfunction.	Check for any food particles or debris obstructing the mechanism. Ensure the pot is correctly seated on the base. If problem persists, contact customer support.
Liquid boiling over.	Too much liquid; heat setting too high.	Do not fill past the MAX line. Reduce the heat setting.

For issues not listed here, please contact Aroma Housewares customer support.

8. SPECIFICATIONS

- **Model:** ASP-700
- **Brand:** AROMA
- **Capacity:** 2.5 Liters
- **Material:** Stainless Steel (pot, basket), Tempered Glass (lid)
- **Color:** White
- **Product Dimensions (L x W x H):** 7.9" x 7.9" x 5.7"
- **Item Weight:** 6 Pounds
- **Power:** 1200 Watts (Rapid Boil)
- **UPC:** 021241107006

9. WARRANTY & SUPPORT

Aroma Housewares products are manufactured to the highest quality standards. For specific warranty information, please refer to the warranty card included with your product or visit the official Aroma Housewares website. For technical support, troubleshooting assistance, or to inquire about replacement parts, please contact Aroma Housewares Customer Service:

- **Website:** [Visit the AROMA Store on Amazon](#)
- **Phone:** Refer to your product's packaging or the official website for the most current contact number.
- **Email:** Refer to your product's packaging or the official website for the most current contact email.

Please have your model number (ASP-700) and purchase date available when contacting support.

© 2026 Aroma Housewares. All rights reserved.