

[manuals.plus](#) /

› [Morecam](#) /

› [Morecam Wireless Video Doorbell Camera with Chime, Door Bell Camera Wireless, 1080P HD, Human Detection, Night Vision, 2-Way Audio, Battery Powered - User Manual](#)

## Morecam J1

# Morecam Wireless Video Doorbell Camera with Chime - User Manual

Model: J1

## 1. INTRODUCTION

Thank you for choosing the Morecam Wireless Video Doorbell Camera with Chime. This device provides enhanced home security and convenience, allowing you to monitor your doorstep, communicate with visitors, and receive alerts directly on your smartphone. This manual will guide you through the setup, operation, and maintenance of your new doorbell camera.



Image 1.1: Morecam Wireless Video Doorbell Camera and Chime with smartphone view.

## 2. PRODUCT OVERVIEW

### 2.1 Key Features

- **1080P HD Video & 2K Resolution:** Clear and detailed video monitoring.
- **Human Detection:** Advanced PIR motion detection to minimize false alerts.
- **Night Vision:** Enhanced visibility in low-light conditions.
- **2-Way Audio:** Communicate directly with visitors from your smartphone.
- **Battery Powered:** Long-lasting battery for wireless convenience.
- **Wireless Chime:** Receive indoor alerts when the doorbell is pressed.
- **IP65 Weather Resistance:** Durable design for outdoor use in various weather conditions.
- **Multiple Storage Options:** Supports cloud storage (with trial) and local Micro SD card (up to 128GB, not included).

### 2.2 Package Contents

- Morecam Wireless Video Doorbell Camera
- Wireless Chime
- Mounting Bracket
- Mounting Screws and Wall Anchors
- Security Screwdriver
- USB Charging Cable
- User Manual

### 3. SETUP GUIDE

Follow these steps for easy self-installation and initial setup of your Morecam doorbell camera.

1. **Charge the Doorbell Camera:** Before installation, fully charge the doorbell camera using the provided USB cable. A full charge ensures optimal performance and battery life.
2. **Download the CloudEdge App:** Search for "CloudEdge" in your smartphone's app store (iOS or Android) and download the application. This app is essential for controlling and monitoring your doorbell camera.
3. **Connect to Wi-Fi and Scan QR Code:** Open the CloudEdge app, create an account, and follow the in-app instructions to add your device. You will be prompted to connect the doorbell to your 2.4GHz Wi-Fi network and scan a QR code displayed on your phone with the doorbell camera.
4. **Install the Doorbell:** Secure the mounting bracket to your desired location using the provided screws and wall anchors. Then, attach the doorbell camera to the bracket and secure it with the special security screwdriver to prevent theft.

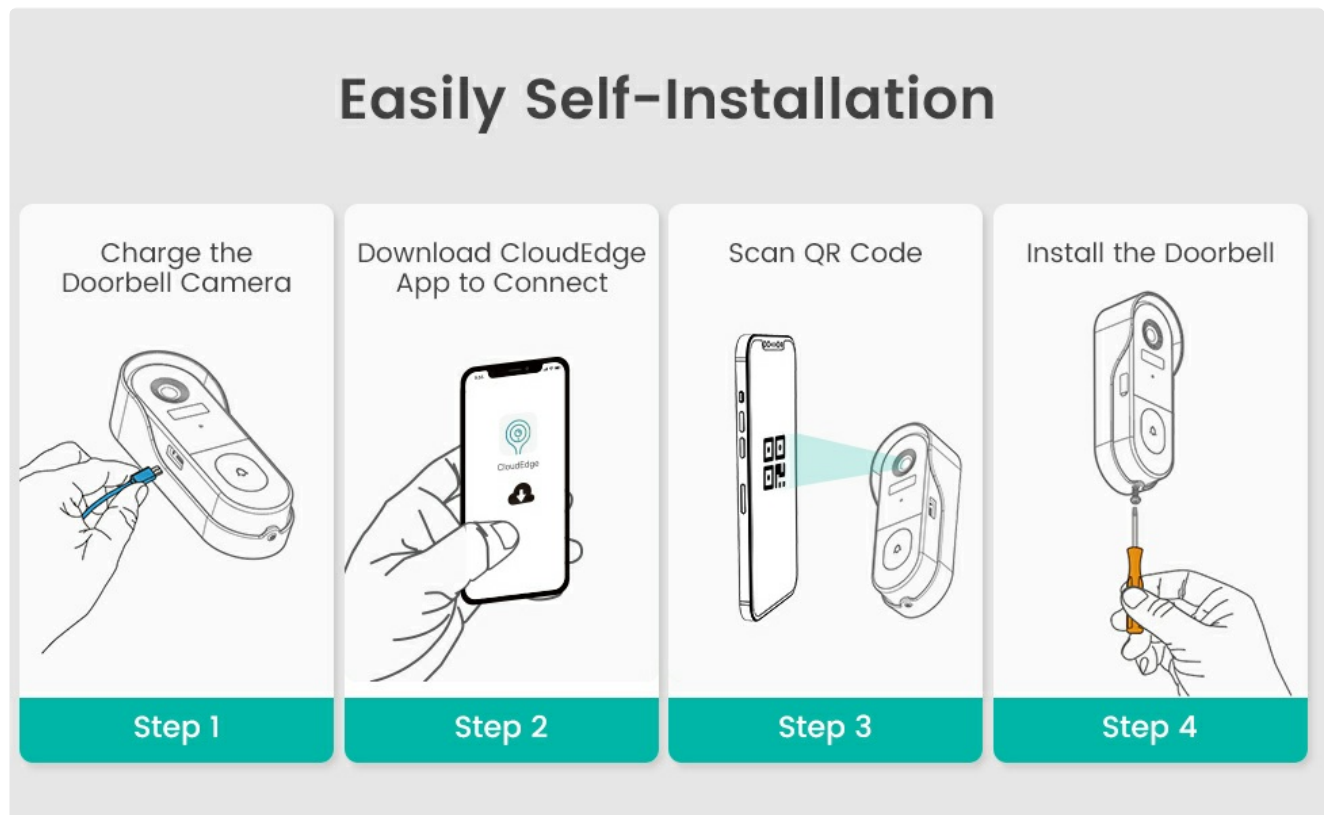


Image 3.1: Visual guide for the four-step self-installation process.

### 4. OPERATING INSTRUCTIONS

#### 4.1 Live View and Two-Way Audio

Open the CloudEdge app to access the live video feed from your doorbell camera at any time. Use the microphone icon in the app to enable two-way audio, allowing you to speak with visitors at your door and hear their responses.



Image 4.1: Demonstrates the two-way audio feature, allowing communication with visitors.

## 4.2 Motion Detection and Alerts

The doorbell camera features smart PIR human detection. When motion is detected, you will receive instant message alerts on your smartphone. You can adjust the sensitivity of the motion detection within the CloudEdge app settings to suit your environment.

# Smart Human Detection & Instant Message Alert

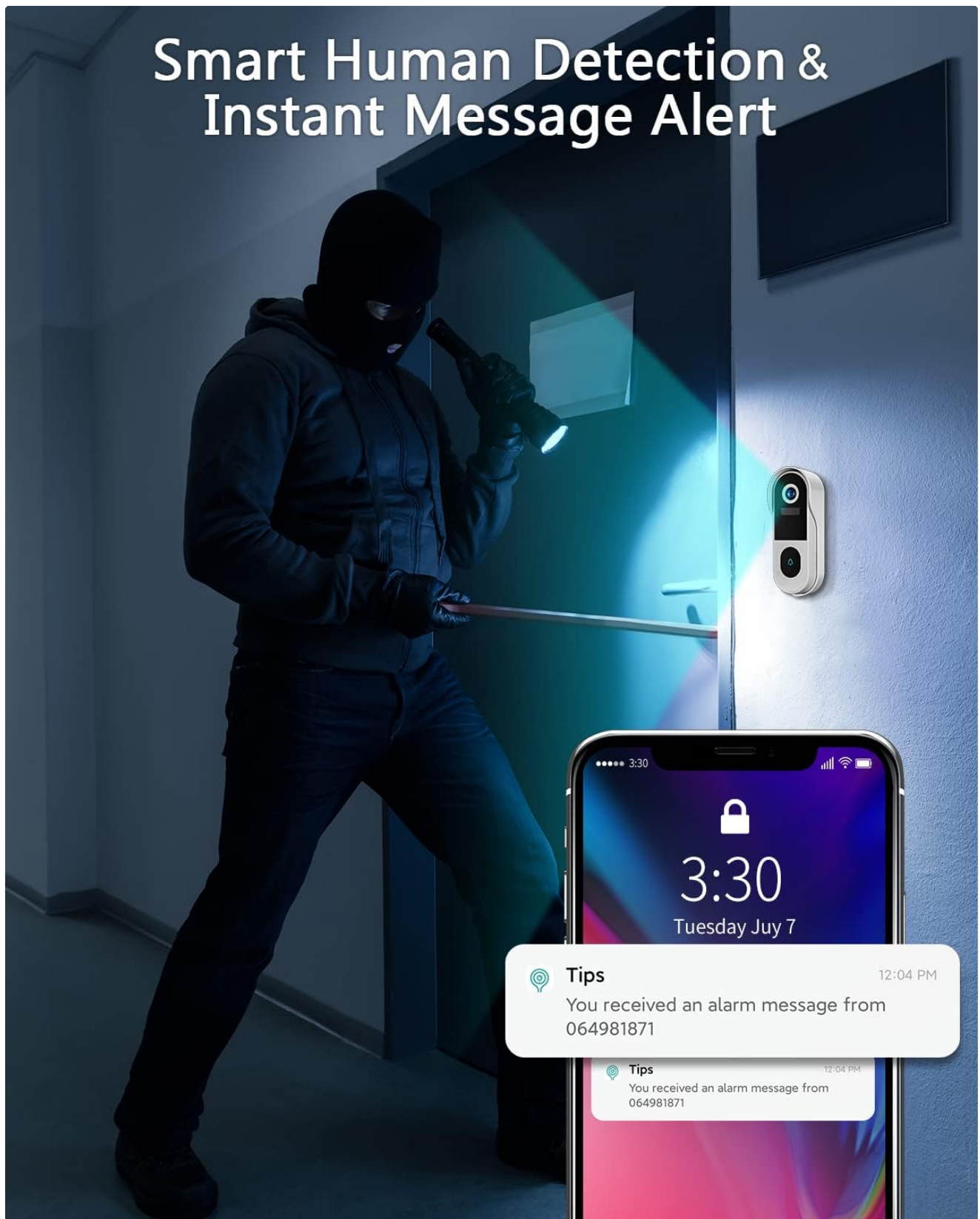


Image 4.2: Illustrates the smart human detection feature and instant message alerts.



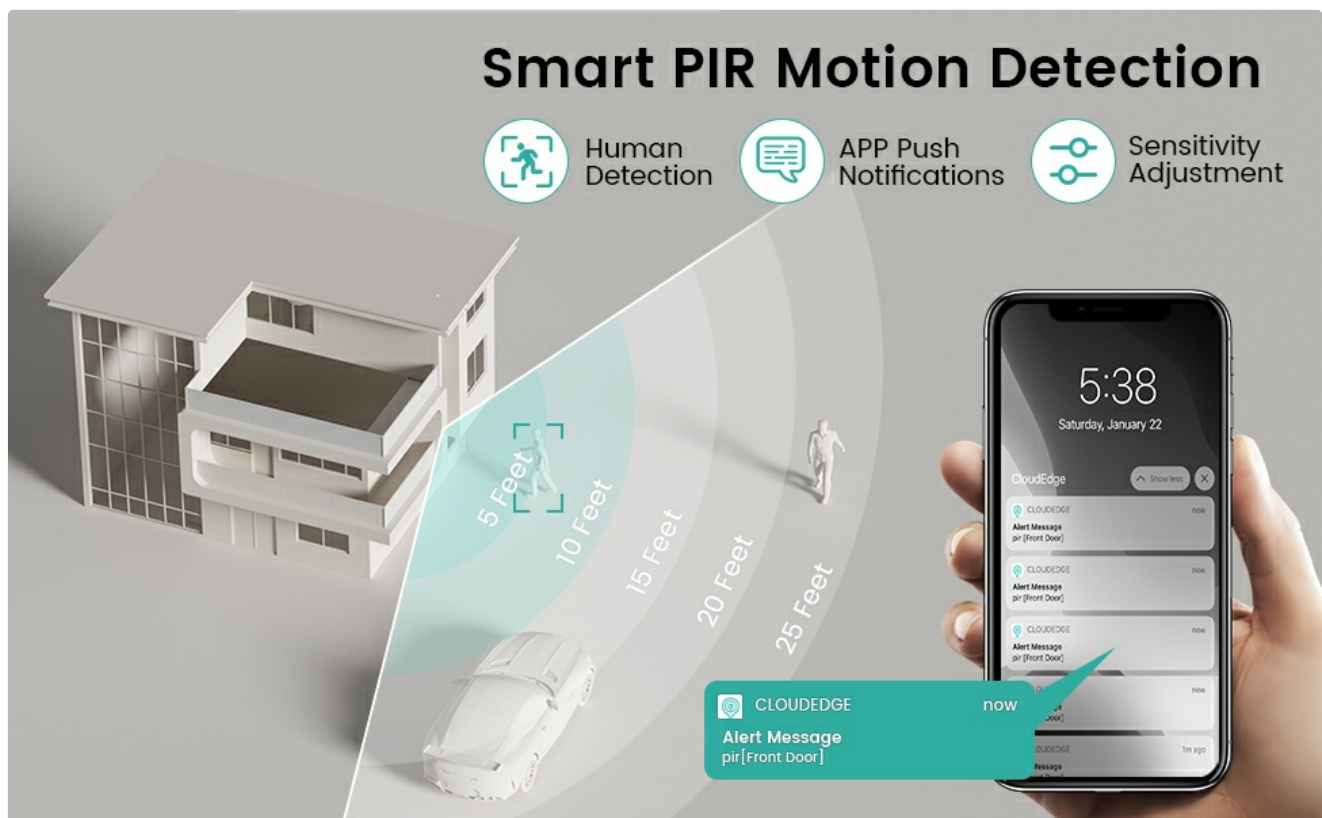


Image 4.3: Diagram showing the range and functionality of smart PIR motion detection.

### 4.3 Night Vision

The doorbell camera is equipped with night vision capabilities, providing clear video footage even in complete darkness. This ensures continuous monitoring of your property 24/7.

### 4.4 Video Storage Options

Your Morecam doorbell camera offers two primary storage methods for recorded video:

- **Cloud Storage:** A 7-day free trial is typically available. Cloud storage allows you to access recordings from anywhere with an internet connection.
- **Local Micro SD Card:** The device supports a Micro SD card up to 128GB (not included) for local storage of recordings. This provides a reliable backup and continuous recording without a subscription.

## 2 Storage Options

Cloud Storage  
(7-day free trial)

Supports up to  
128G micro SD storage  
(Not included)

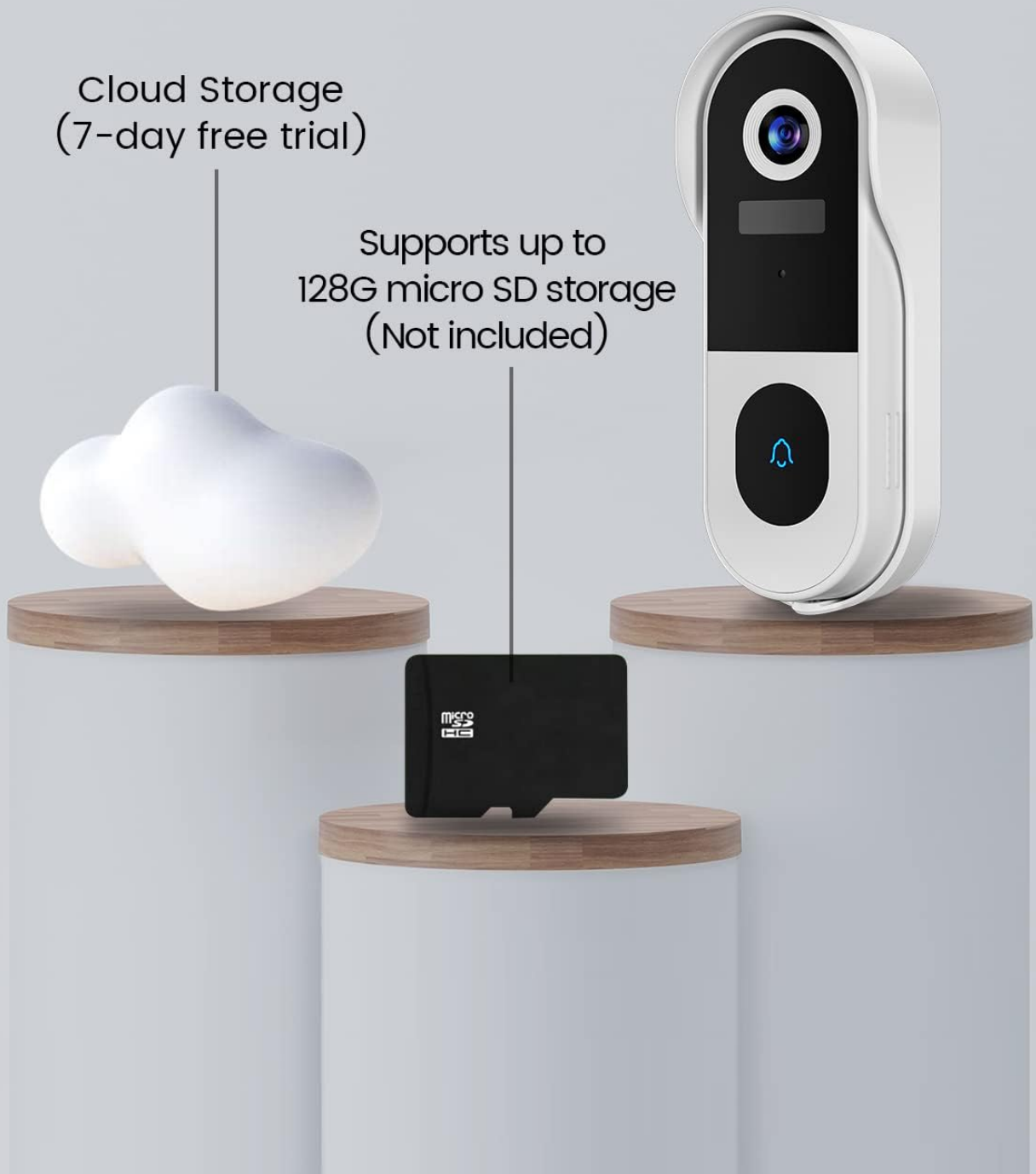


Image 4.4: Depicts the two available storage options: Cloud Storage and Micro SD card.

### 4.5 Video Quality Demonstration

The doorbell camera provides high-definition video quality, ensuring clear identification of visitors and events.

Your browser does not support the video tag.

Video 4.5: A short demonstration of the J1 doorbell camera's video quality, showcasing clarity and detail.

# 2K Resolution

2K

1080P

Image 4.6: Comparison illustrating the superior clarity of 2K resolution over 1080P.

## 5. MAINTENANCE

### 5.1 Battery Charging

The doorbell camera is powered by a rechargeable battery. When the battery level is low, you will receive a notification via the CloudEdge app. Disconnect the doorbell from its mounting bracket and charge it using the provided USB cable. A full charge can last up to 120 days depending on usage and motion detection frequency.



# Long standby & Stable Connection

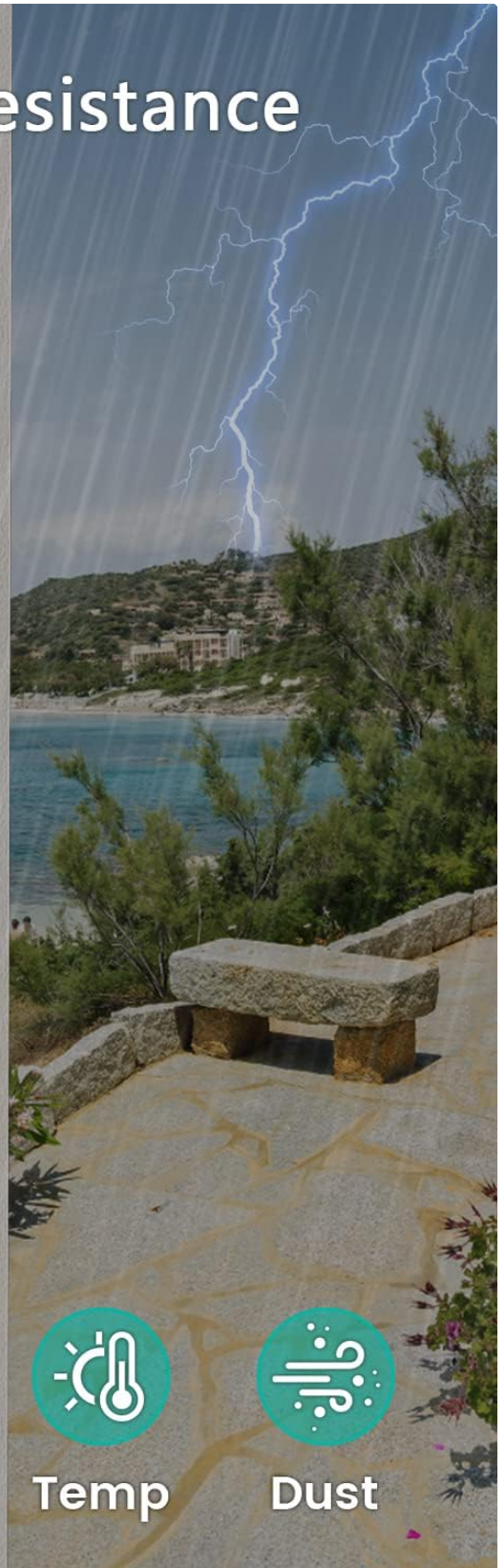


Image 5.1: Highlights the long standby time and stable connection of the doorbell camera.

## 5.2 Weather Resistance

The Morecam doorbell camera is rated IP65 for weather resistance, meaning it is protected against dust and low-pressure water jets. While designed for outdoor use, avoid submerging the device in water or exposing it to extreme weather conditions for prolonged periods.

# IP65 Weather Resistance



Rain



Snow



Shine



Temp



Dust

Image 5.2: Illustrates the IP65 weather resistance, showing protection against rain, snow, and dust.

## 5.3 Cleaning

To maintain optimal performance, periodically clean the camera lens and the doorbell surface with a soft, dry cloth. Do not use abrasive cleaners or solvents.

## 6. TROUBLESHOOTING

- **Doorbell not connecting to Wi-Fi:**
  - Ensure your Wi-Fi network is 2.4GHz. The doorbell does not support 5GHz networks.

- Check your Wi-Fi signal strength at the installation location. If weak, consider moving your router or using a Wi-Fi extender.
- Verify that you have entered the correct Wi-Fi password.
- Try resetting the doorbell camera and repeating the setup process in the CloudEdge app.
- **Poor video quality or grainy images:**
  - Ensure the camera lens is clean and free from dust or smudges.
  - Check your Wi-Fi connection stability. A weak or unstable connection can affect video streaming quality.
  - Verify that the camera is set to its highest resolution (2K) in the app settings.
- **Battery not holding charge or draining quickly:**
  - Ensure the doorbell is fully charged before initial use. Charging can take several hours.
  - Frequent motion detections, live view access, and two-way audio usage can reduce battery life. Adjust motion detection sensitivity and recording duration in the app.
  - Ensure the charging cable and adapter are functioning correctly.
- **No motion detection alerts:**
  - Check the motion detection settings in the CloudEdge app. Ensure it is enabled and sensitivity is set appropriately.
  - Verify that app notifications are enabled on your smartphone.
  - Ensure there are no obstructions blocking the camera's view or the PIR sensor.
- **Chime not ringing:**
  - Ensure the chime is plugged into a power outlet and is within range of the doorbell camera.
  - Check the chime's pairing status with the doorbell. Refer to the chime's specific instructions for re-pairing if necessary.

## 7. SPECIFICATIONS

Feature	Detail
Model Number	J1
Video Capture Resolution	1080p, 2K
Connectivity Technology	Wireless (Wi-Fi)
Power Source	Battery Powered
Battery Capacity	5000 Milliampere Hour (mAh)
Night Vision Range	32 Feet
Special Features	2-Way Audio, HD Resolution, Night Vision, Human Detection
Indoor/Outdoor Usage	Outdoor
International Protection Rating	IP65
Product Dimensions	2.2 x 1.4 x 5.3 inches
Item Weight	15.5 ounces

## 8. WARRANTY AND SUPPORT

Morecam is committed to providing high-quality products and excellent customer service. For warranty information, technical assistance, or any product-related inquiries, please contact our professional technical support team. We

aim for quick responses and solutions tailored to your needs.




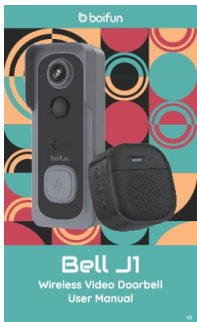
### Professional Technical Team

### Quick Response

### Support Tailored to Your Needs

Please refer to the product packaging or Morecam's official website for specific contact details and the most up-to-date warranty policy.

## Related Documents - J1

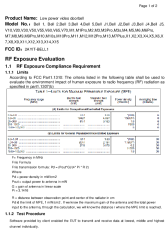
	<p><a href="#">Boifun Bell J1 Wireless Video Doorbell User Manual</a></p> <p>User manual for the Boifun Bell J1 Wireless Video Doorbell, covering features, setup, operation, and specifications. Includes information on battery charging, app download, Wi-Fi setup, live viewing, playback, leaving voice messages, sharing, chime connection, installation, and FAQs.</p>
	<p><a href="#">Boifun Bell J1 Wireless Video Doorbell User Manual</a></p> <p>User manual for the Boifun Bell J1 Wireless Video Doorbell, covering setup, features, and troubleshooting.</p>
	<p><a href="#">Video Doorbell J1 Quick Start Guide</a></p> <p>A comprehensive guide to setting up and using the Video Doorbell J1, covering unboxing, component identification, app installation, Wi-Fi configuration, live viewing, playback, sharing, chime pairing, installation options, specifications, and troubleshooting.</p>
	<p><a href="#">Boifun Bell J1 Wireless Video Doorbell User Manual</a></p> <p>Comprehensive user manual for the Boifun Bell J1 Wireless Video Doorbell, covering installation, app connection, features, FCC compliance, and warranty information.</p>





[Boifun Bell J1 Wireless Video Doorbell User Manual - Setup & Guide](#)

Comprehensive user manual for the Boifun Bell J1 Wireless Video Doorbell. Learn about installation, Wi-Fi setup, app usage, features like live viewing and two-way talk, and troubleshooting. Get the most out of your smart home security.



[RF Exposure Evaluation for Low Power Video Doorbell \(Model Bell Series\)](#)

This document details the RF exposure evaluation for the Low Power Video Doorbell, including compliance requirements, MPE limits, Friis formula, and test results for 2.4G WIFI 802.11g.