

Manuals+

[Q & A](#) | [Deep Search](#) | [Upload](#)

[manuals.plus](#) /

› [WIKICO](#) /

› [WIKICO WD02 6K Digital Camera User Manual](#)

WIKICO WD02

WIKICO WD02 6K Digital Camera User Manual

Model: WD02

INTRODUCTION

This manual provides detailed instructions for the operation and maintenance of your WIKICO WD02 6K Digital Camera. Please read this manual thoroughly before using the camera to ensure proper function and to maximize your user experience. Keep this manual for future reference.



Figure 1: WIKICO WD02 6K Digital Camera and included accessories.

PACKING LIST

Verify that all items listed below are included in your package:

- WIKICO WD02 6K Digital Camera (1)
- Product Manual (1)
- Charging Head (1)
- Dual Charging Dock (1)
- Rechargeable Batteries (2)
- 32GB TF Card (1)
- USB Cable (1)
- Adapter (1)
- Macro Lens (1)

- Wide Angle Lens (1)



Figure 2: Visual representation of the camera and its included accessories.

SETUP

1. Battery Installation and Charging

1. Open the battery compartment cover located on the side of the camera.
2. Insert the rechargeable battery, ensuring the correct orientation as indicated inside the compartment.
3. Close the battery compartment cover securely.
4. To charge, insert the battery into the dual charging dock or connect the camera directly to a power source using the provided USB cable and adapter. The charging indicator will show the charging status.



Figure 3: Multiple options for charging the camera batteries.

2. Memory Card Installation

1. Locate the memory card slot on the side of the camera.
2. Insert the 32GB Micro SD card (or another compatible Micro SD card up to 128GB) into the slot until it clicks into place. Ensure the card is inserted with the correct orientation.

3. To remove, gently press the card inward until it springs out.

3. Lens Attachment

The camera comes with a detachable 52mm wide-angle lens and a macro lens. These can be attached to the camera's main lens for different photographic effects.

1. Align the threads of the desired lens (wide-angle or macro) with the threads on the front of the camera's main lens.
2. Gently twist the lens clockwise until it is securely fastened. Do not overtighten.
3. To remove, twist counter-clockwise until it detaches.

OPERATING INSTRUCTIONS

1. Camera Controls Overview

Familiarize yourself with the camera's buttons and interfaces:



Figure 4: Product Button Function Introduction.

- **Mode Dial:** Selects shooting modes (Photo, Video, Time-lapse, etc.).
- **Hot Shoe:** For attaching external accessories like flashes or microphones.
- **Power Button:** Turns the camera on/off.
- **Photo Button:** Captures still images.
- **Digital Zoom In/Out:** Adjusts digital zoom level.
- **Navigation Buttons (Up, Down, Left, Right):** Navigate menus and settings.
- **OK Button:** Confirms selections.
- **Menu Button:** Accesses camera settings.
- **Playback Button:** Reviews photos and videos.
- **External MIC Interface:** Connects an external microphone.
- **Type-C USB Interface:** For charging and data transfer.
- **HDMI Output Interface:** Connects to an external display.

2. Basic Photography

1. **Power On:** Press the Power Button to turn on the camera. The 3-inch 180° flip screen will activate.
2. **Select Mode:** Rotate the Mode Dial to select "Photo Mode".

3. **Focus:** Press the Photo Button halfway down to activate autofocus. A focusing frame will appear on the display. The camera supports manual focus; adjust as needed.
4. **Capture:** Press the Photo Button fully to capture a 64MP image.
5. **Digital Zoom:** Use the Digital Zoom In/Out buttons to adjust the 16X digital zoom.
6. **Built-in Fill Light:** For low-light conditions, the camera features a built-in fill light.

Innovative 64MP Autofocus Camera

Press the Shutter halfway to autofocus for sharper and clear images



Figure 5: Innovative 64MP Autofocus Camera. Press the shutter halfway to autofocus for sharper images.

16x Digital Zoom

easily capture distant scenes, magnify details, and maintain clear image quality.



Figure 6: 16x Digital Zoom. Easily capture distant scenes and magnify details.

Built-in Fill Light

capture detailed photos even in low-light conditions.

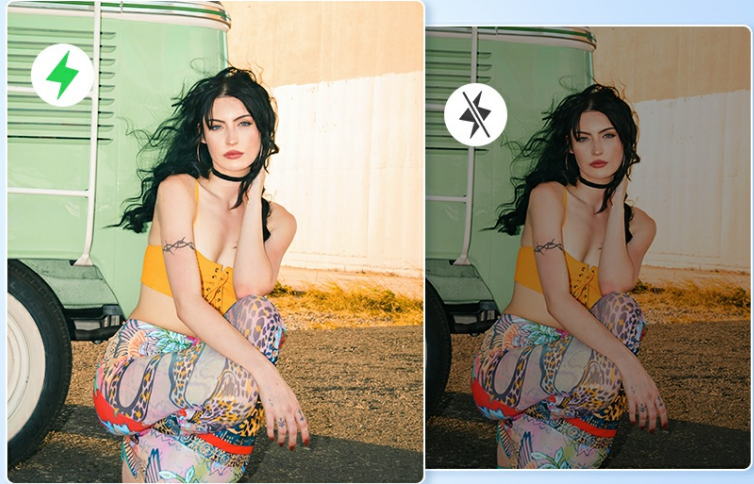


Figure 7: Built-in Fill Light. Capture detailed photos even in low-light conditions.

3. Video Recording

1. **Select Mode:** Rotate the Mode Dial to select "Video Mode".
2. **Start/Stop Recording:** Press the Photo Button to start recording 6K video. Press again to stop.
3. **Video Pause:** During recording, you can pause and resume video capture.
4. **Loop Recording:** The camera supports loop recording, overwriting older files when the memory card is full.
5. **Recording While Charging:** The camera can record video while connected to a power source for extended use.



Figure 8: 6K UHD Video Camera. Use video to tell a story.

4. Special Features and Modes

- **Webcam Function:** Connect the camera to your computer via USB and select "Webcam Mode" for live streaming, video calls, or online meetings.
- **Built-in Filters:** Access various fun and artistic filters through the camera's menu to enhance your photos and videos.
- **Continuous Shooting:** Capture a rapid sequence of images.
- **Self-Timer:** Set a delay before taking a photo (e.g., 3s, 5s, 10s).

- **Time-lapse:** Record a series of images over time to create a time-lapse video.
- **Slow Motion:** Capture video at a higher frame rate for slow-motion playback.



Figure 9: Webcam Functionality. Ideal for live streaming and video calls.

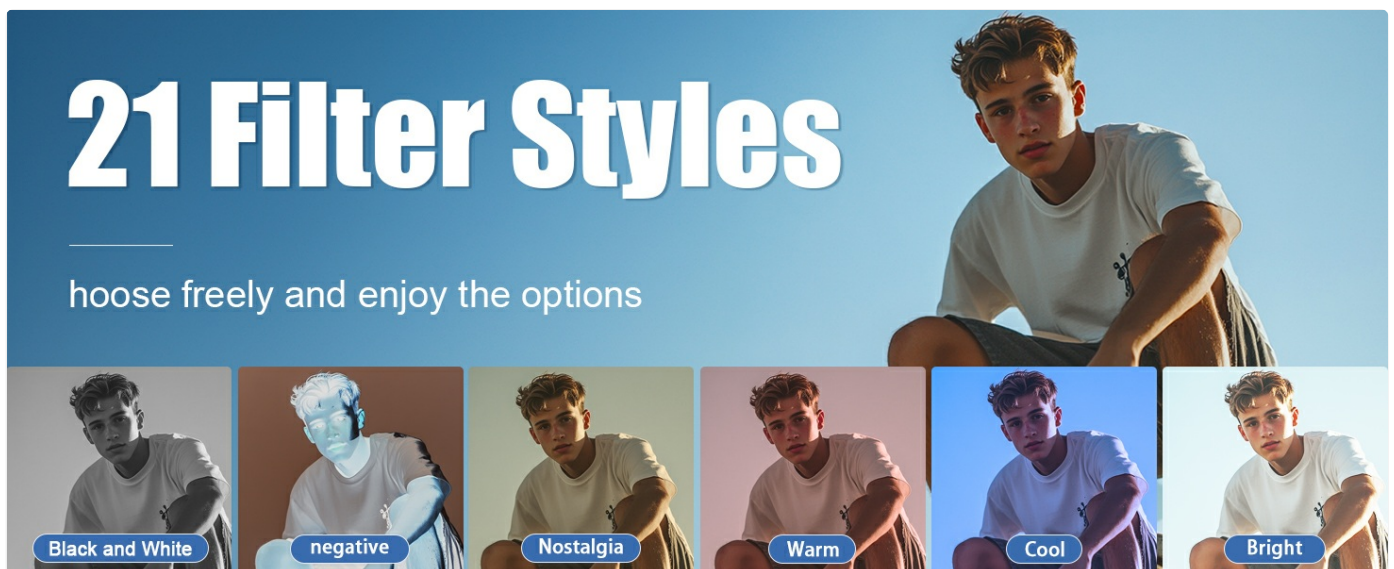
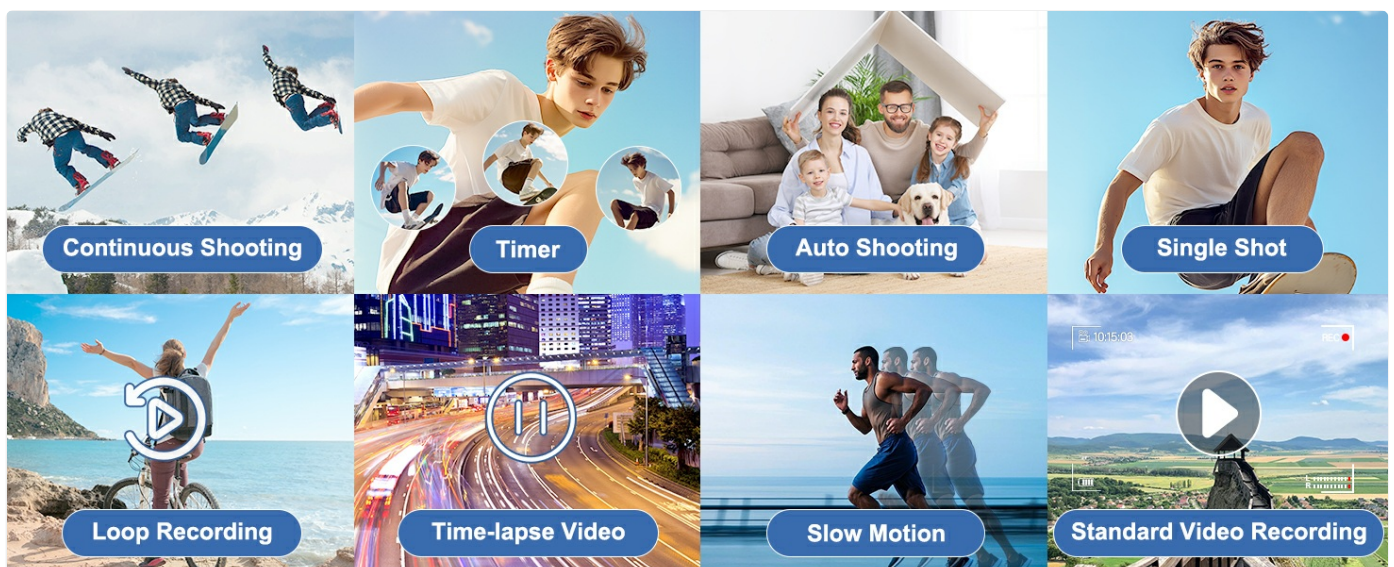


Figure 10: 21 Filter Styles. Choose freely and enjoy the options.



5. Wi-Fi Connectivity and Data Transfer

The camera features built-in Wi-Fi for easy photo and video sharing. You can also transfer files via USB cable.

- **Wi-Fi Transfer:** Activate Wi-Fi on the camera and connect to your smartphone or tablet using the dedicated app (if available) to view, share, and edit your content.
- **USB Transfer:** Connect the camera to a computer using the USB cable. The camera will appear as a removable drive, allowing you to copy files directly.



Figure 12: USB Cable & Wi-Fi. Transfer photos and videos efficiently.

MAINTENANCE

1. Cleaning the Camera

- Use a soft, lint-free cloth to gently wipe the camera body.
- For the lens, use a specialized lens cleaning cloth and solution. Avoid touching the lens surface with your fingers.
- Do not use strong detergents or solvents, as they may damage the camera's finish.

2. Battery Care

- Store batteries in a cool, dry place when not in use.
- Avoid fully discharging the batteries frequently to prolong their lifespan.
- If the camera will not be used for an extended period, remove the batteries.

3. Storage

- Store the camera in a dry, dust-free environment, away from direct sunlight and extreme temperatures.
- Use a camera bag or case to protect it from physical damage.

TROUBLESHOOTING

If you encounter issues with your WIKICO WD02 camera, refer to the following common problems and solutions:

Problem	Possible Cause / Solution
Camera does not power on.	<ul style="list-style-type: none">• Battery is depleted. Charge the battery fully.• Battery is not inserted correctly. Reinsert the battery with correct orientation.• Battery is damaged. Try a different battery if available.
Images are blurry.	<ul style="list-style-type: none">• Camera shake. Hold the camera steady or use a tripod.• Subject is out of focus. Ensure autofocus is engaged by pressing the shutter halfway, or adjust manual focus.• Insufficient lighting. Use the built-in fill light or shoot in brighter conditions.• Lens is dirty. Clean the lens with a proper lens cleaning cloth.
Video quality is poor.	<ul style="list-style-type: none">• Low light conditions. Ensure adequate lighting.• Incorrect video settings. Check video resolution and frame rate settings in the menu.
Cannot transfer files to computer.	<ul style="list-style-type: none">• USB cable is not connected properly. Reconnect the USB cable.• Camera is not in the correct USB mode. Check camera settings for USB connection options.• Computer drivers may be needed. Ensure your computer recognizes the camera.• Wi-Fi connection issues. Ensure Wi-Fi is enabled on both devices and connected correctly.
Memory card error.	<ul style="list-style-type: none">• Memory card is full. Transfer files and format the card (this will erase all data).• Memory card is not inserted correctly. Reinsert the card.• Memory card is damaged or incompatible. Try a different, compatible Micro SD card.

SPECIFICATIONS

Feature	Detail
Brand	WIKICO
Model Name	WD02
Effective Still Resolution	64 MP
Video Resolution	2160p (6K)
Digital Zoom	16x
Screen Size	3 inches
Display Type	LCD, 180° Flip Screen
Image Stabilization	Digital, Optical

Feature	Detail
Photo Sensor Technology	CMOS
Supported File Format	MP4
Memory Card Type	Micro SD (up to 128 GB)
Connectivity Technology	Wi-Fi, USB Type-C, HDMI
Battery Type	Lithium Ion
Battery Capacity	1500 Milliamp Hours
Battery Average Life	3 Hours
Focus Type	Manual Focus, Autofocus
Special Features	Webcam Function, Built-in Filters, Continuous Shooting, Self-Timer, Loop Recording, Time-lapse, Slow Motion, Built-in Fill Light, Hot Shoe Interface
Dimensions (approx.)	4.73 inches (L) x 3.15 inches (H) x 1.97 inches (W)
Weight (approx.)	220 Grams



Figure 13: Compact design and approximate dimensions of the camera.

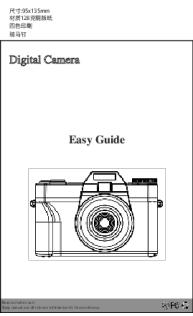

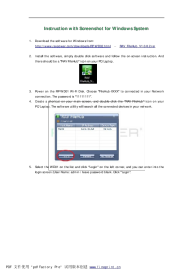
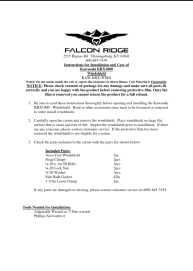
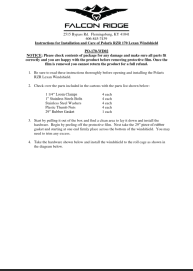
WARRANTY AND SUPPORT

WIKICO is committed to providing high-quality products and customer support.

- **Lifetime Customer Support:** WIKICO offers 24-hour responsive customer support for the lifetime of the product.
- **Accessory Replacement:** Free accessory replacement is provided within one year of purchase.
- For assistance, please contact WIKICO customer service. Refer to the product packaging or the official WIKICO website for contact details.



Related Documents - WD02

	<p>Digital Camera Easy Guide: Setup, Operation, and Troubleshooting</p> <p>This easy guide provides comprehensive instructions for operating your digital camera, covering setup, basic functions, advanced features, troubleshooting, and maintenance. It details camera parts, charging, shooting modes, playback, computer connectivity, and app usage.</p>
	<p>Easy Guide for 6K ULTRAHD Digital Camera</p> <p>This easy guide provides essential information for operating the 6K ULTRAHD Digital Camera, covering setup, usage, connectivity, and troubleshooting.</p>
	<p>RAVPower FileHub RP-WD02: Windows System Instructions</p> <p>Comprehensive guide to downloading, installing, and using the RAVPower FileHub RP-WD02 on a Windows system, covering file management, network settings, and system configurations.</p>
	<p>WOLFANG WD02 Dash Camera User Manual</p> <p>Comprehensive user manual for the WOLFANG WD02 Dash Camera, covering package contents, camera overview, specifications, warnings, operation instructions, and warranty information.</p>
	<p>Kawasaki KRX1000 Windshield Installation and Care Guide - Falcon Ridge</p> <p>Detailed instructions for installing the Falcon Ridge windshield on a Kawasaki KRX1000. Includes a parts list, required tools, and important safety notices for a smooth and correct installation.</p>
	<p>Polaris RZR 170 Lexan Windshield Installation Guide & Return Policy Falcon Ridge</p> <p>Detailed installation instructions, parts list, return policy, and warranty information for the Falcon Ridge Lexan Windshield (Model PO-170-WD02) for the Polaris RZR 170. Learn how to properly install and care for your UTV windshield.</p>

