

Kool-It LX-14RB

Kool-It LX-14RB Commercial Glass Door Merchandiser Refrigerator User Manual

Model: LX-14RB

1. INTRODUCTION

This manual provides essential information for the safe and efficient operation, installation, and maintenance of your Kool-It LX-14RB Commercial Glass Door Merchandiser Refrigerator. Please read this manual thoroughly before operating the unit and retain it for future reference.

Product Overview

The Kool-It LX-14RB is a 14 cubic foot, one-section glass door merchandiser refrigerator designed for commercial use. It features an intelligent electronic control system, LED lighting, and utilizes R290 hydrocarbon refrigerant. The unit is equipped with spark-free refrigeration components for enhanced safety and is NSF Certified and Energy Star compliant.

- **Intelligent Electronic Control:** Patented ETC1H electronic controller ensures precise temperature management and optimized defrost cycles.
- **LED Lighting System:** Ultra-bright, low-energy interior LED illumination for optimal product visibility.
- **R290 Hydrocarbon Refrigerant:** Environmentally friendly refrigerant meeting current energy standards.
- **Spark-Free Refrigeration Components:** Designed for optimal safety in commercial environments.
- **Durable Construction:** Pre-painted steel interior and exterior with a hinged locking glass door.

2. SAFETY INSTRUCTIONS

Always follow basic safety precautions when using this appliance to reduce the risk of fire, electric shock, or injury.

- **Electrical Safety:** Ensure the unit is connected to a properly grounded 115V/60Hz/1-ph power supply with a dedicated circuit. Do not use extension cords.
- **Flammable Refrigerant:** This unit uses R290 hydrocarbon refrigerant, which is flammable. Do not use mechanical devices or other means to accelerate the defrosting process, other than those recommended by the manufacturer. Do not damage the refrigerant circuit.
- **Ventilation:** Maintain adequate clearance around the unit for proper ventilation to prevent overheating.
- **Cleaning:** Disconnect power before cleaning or performing maintenance.

- **Service:** All service and repairs should be performed by qualified service personnel.
- **Weight:** The unit is heavy. Use appropriate lifting techniques and equipment during installation to prevent injury.

3. SETUP

3.1 Unpacking

1. Carefully remove all packaging materials, including tape and protective film.
2. Inspect the unit for any shipping damage. Report any damage to the carrier immediately.
3. Remove all internal packing materials and accessories.

3.2 Placement

- Place the refrigerator on a strong, level surface capable of supporting its weight when fully loaded.
- Ensure adequate clearance (at least 4 inches) around the back and sides of the unit for proper air circulation and heat dissipation.
- Avoid direct sunlight, heat sources, or areas with high humidity.
- The unit is designed for indoor use only.

3.3 Initial Cleaning

Before first use, clean the interior and exterior surfaces with a mild detergent and warm water. Rinse thoroughly and dry completely.

3.4 Power Connection

Connect the unit to a dedicated 115V/60Hz/1-ph electrical outlet. The unit comes with a cord and NEMA 5-15P plug. Do not use adapters or extension cords.

3.5 Initial Startup

After placement and power connection, allow the unit to sit for at least 2 hours before plugging it in. This allows refrigerants and oils to settle. Once plugged in, allow the unit to run empty for several hours to reach its operating temperature (32°F to 44.6°F) before loading products.



Figure 1: Full view of the Kool-It LX-14RB Merchandiser Refrigerator. This image displays the overall design, including the black exterior, glass door, and internal shelving with various products.

4. OPERATING INSTRUCTIONS

4.1 Temperature Control

The unit is equipped with an intelligent electronic controller (ETC1H) that manages the temperature. The factory preset temperature range is 32°F to 44.6°F (0°C to 7°C). Refer to the controller's specific instructions for adjusting temperature settings, if necessary. Avoid frequent and drastic temperature changes.

4.2 Loading Product

- Ensure products are pre-chilled before placing them into the refrigerator to maintain stable internal temperatures.
- Do not overload shelves. Allow space for air circulation around products.
- Avoid blocking the internal air vents.

4.3 Door Operation

The unit features a hinged locking glass door. Ensure the door is closed securely after each use to maintain

internal temperature and energy efficiency. The lock provides added security for stored merchandise.

4.4 LED Lighting System

The interior LED lighting system is designed for optimal product display. It is typically controlled by the electronic controller or a dedicated switch. The low-profile, door-mounted, clip-in LED design ensures even illumination.



Figure 2: Close-up view of the top section of the refrigerator, highlighting the Kool-It logo, the upper shelves, and the internal LED lighting system. Various products are visible on the shelves.

5. MAINTENANCE

Regular maintenance ensures optimal performance and extends the lifespan of your refrigerator. Always disconnect power before performing any maintenance.

5.1 Regular Cleaning

- **Interior:** Clean the interior surfaces, shelves, and door gaskets regularly with a mild, non-abrasive detergent and warm water. Rinse thoroughly and dry completely to prevent mold and odors.
- **Exterior:** Wipe down the exterior surfaces with a soft cloth and mild cleaner. Avoid harsh chemicals that

may damage the finish.

- **Glass Door:** Use a glass cleaner specifically designed for glass surfaces.

5.2 Condenser Cleaning

The condenser coil should be cleaned every 30-90 days, depending on the operating environment. A dirty condenser coil reduces cooling efficiency and increases energy consumption. Use a stiff brush or vacuum cleaner to remove dust and debris from the condenser fins. The newly designed condenser features reduced joints for improved long-term reliability.

5.3 Gasket Inspection

Regularly inspect the door gaskets for cracks, tears, or signs of wear. Damaged gaskets compromise sealing and lead to energy loss. Replace worn gaskets promptly.

5.4 Defrost Cycle

The intelligent electronic control system manages the automatic defrost cycle. Manual defrosting is generally not required. If excessive ice buildup occurs, contact qualified service personnel.



Figure 3: Close-up view of the bottom section of the refrigerator, displaying the lower shelves with products and the condenser grille at the base. This area is crucial for air intake and heat exchange.

6. TROUBLESHOOTING

Before contacting service, review the following common issues and solutions:

- **Unit Not Running:**
 - Check if the power cord is securely plugged into a live outlet.
 - Verify the circuit breaker or fuse is not tripped.
 - Ensure the unit's power switch (if present) is in the 'ON' position.
- **Insufficient Cooling:**
 - Check if the temperature setting is appropriate.
 - Ensure the condenser coil is clean and free of obstructions.
 - Verify the door is closing properly and gaskets are sealing.
 - Avoid overloading the unit, which can restrict airflow.
 - Ensure ambient room temperature is within operating limits.
- **Excessive Noise:**
 - Check if the unit is level.
 - Ensure no objects are vibrating against the unit.
 - Fan motors may produce some operational noise; excessive or unusual noise may indicate a problem.
- **LED Lights Not Working:**
 - Check if the light switch (if applicable) is on.
 - Verify power supply to the unit.

If these steps do not resolve the issue, contact qualified service personnel.

7. SPECIFICATIONS

Feature	Specification
Model Number	LX-14RB
Brand	Kool-It
Capacity	11.5 Cubic Feet (approx. 14 cu. ft. gross)
Product Dimensions (D x W x H)	24.63" x 24.75" x 63.88"
Color	Black
Number of Doors	1 (Hinged Glass Door)
Voltage	115 Volts
Frequency	60 Hz
Phase	1-ph
Amperage	4.1 Amps

Feature	Specification
Horsepower (HP)	1/5 HP
Refrigerant	R290 Hydrocarbon
Temperature Range	32°F to 44.6°F (0°C to 7°C)
Form Factor	Compact
Certifications	Energy Star, NSF Listed
Cord Type	NEMA 5-15P
Manufacturer	MVP Group


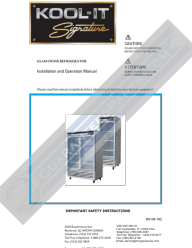
8. WARRANTY AND SUPPORT

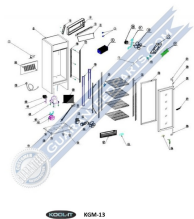
For warranty information, technical support, or to order replacement parts, please contact Kool-It customer service or your authorized dealer. Keep your purchase receipt and model number (LX-14RB) readily available when contacting support.

Refer to the official Kool-It website or your product documentation for the most current warranty terms and contact information.

© 2023 Kool-It. All rights reserved. Information subject to change without notice.

Related Documents - LX-14RB

	<p>KOOL-IT KBSF-3 Signature Triple Solid Door Bottom Mount Freezer - Technical Specifications</p> <p>Detailed technical specifications, key features, dimensions, refrigeration performance, electrical requirements, and contact information for the KOOL-IT KBSF-3 Signature triple solid door bottom mount freezer.</p>
	<p>Kool-It Glass Door Refrigerator Installation and Operation Manual</p> <p>This manual provides detailed instructions for the installation, operation, cleaning, and troubleshooting of Kool-It Glass Door Refrigerators, models KBSR-1G and KBSR-2G. It includes safety precautions, specifications, and basic operation guidance.</p>



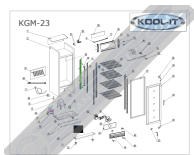
[Kool-It KGM-13 Refrigerator Parts List and Exploded View Diagram](#)

Comprehensive parts list and exploded view diagram for the Kool-It KGM-13 refrigerator, detailing all components with MVP item numbers for easy identification and ordering.



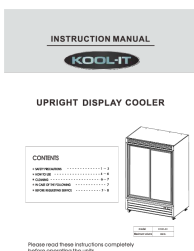
[Kool-It KSM-40 Parts List and Diagram](#)

Detailed parts list and exploded view diagram for the Kool-It KSM-40 commercial refrigeration unit, including part numbers and descriptions for easy identification and replacement.



[Kool-It KGM-23 Commercial Refrigerator Parts List and Diagram](#)

Detailed parts list and exploded view diagram for the Kool-It KGM-23 commercial refrigerator, including part numbers and descriptions for easy identification and ordering of replacement components.



KOOL-IT KSM-40 Upright Display Cooler Instruction Manual

This manual provides essential safety instructions, operating procedures, cleaning guidelines, and troubleshooting tips for the KOOL-IT KSM-40 Upright Display Cooler.

LX-14RB
SINGLE GLASS DOOR
MERCHANDISER REFRIGERATOR

Medium single door merchandiser refrigerator
energy efficient, eco-friendly HC refrigerant
with low charge, spark-free components,
professional technical service and unmatched
warranty.



KEY FEATURES

- **eco-Friendly Refrigerant**
Environmentally friendly R290 hydrocarbon refrigerant has low global warming potential (GWP). Meets all USA, California & Canada refrigerant & energy standards.
- **Digital Temperature Display**
Electronic controller assures optimal refrigeration performance through precision temperature control.
- **High Power Reliable Refrigeration System**
Fast pull down, optimal internal air circulation and optimal defrosting, maintaining ideal temperatures for food preservation.
- **Standard LED Lighting System**
Ultra-bright LX5, low energy interior LED illumination system provides optimal merchandise display visibility. Low profile, door mounted, clip-on LED design.
- **Spark-Free Refrigeration Components**
All glass door merchandiser models have spark free refrigeration components for optimal safety, per requirements.
- **Low Noise Refrigeration Unit**
Rated under 85 Db.



**INDUSTRY'S FIRST
10/80 WARRANTY**



<p>2540 10th Street Port Coquitlam, BC, V3C 3B9 Tel: 778.682.8627 / Toll Free: 800.218.8677 Fax: 778.681.6100</p>	<p>5499 Baymount Avenue Mississauga, ON, Canada M9P 1P9 Tel: 514.332.9791 / Toll Free: 888.275.4538 Fax: 514.342.3854 / Toll Free: 877.453.8832</p>
---	---

5659 Boulevard Avenue
Montreal, QC, Canada H4P 2P9
Tel: \$14.737.6761 / Toll Free: 888.275.4538
Fax: \$14.342.3854 / Toll Free: 877.453.8832

[\[pdf\]](#) Warrant

LX 14RB Spec Sheet Kool It Signature MVP Group Corp 1 mvpgroupcorp 2021 10 |||

LX-14RB SINGLE GLASS DOOR MERCHANDISER REFRIGERATOR Medium
single door merchandiser refrigerator energy efficient, eco-friendly HC refrigerant with
low charge, spark-free components, professional technical service and unmatched
warranty. KEY FEATURES Eco-Friendly Refrigerant Environmentally friendly R...
lang:en score:36 filesize: 4 M page count: 2 document date: 2023-06-10

LX-14RB
SINGLE GLASS DOOR
MERCHANDISER REFRIGERATOR

Medium single door merchandiser refrigerator energy efficient, eco-friendly HC refrigerant with low charge, spark-free components, professional technical service and unmatched warranty.



KEY FEATURES

- Eco-Friendly Refrigerant**
Environmentally friendly R290 hydrocarbon refrigerant has low global warming potential (GWP). Meets all USA, California & Canada refrigerant & energy standards.
- Digital Temperature Display**
Electronic controls ensure optimal refrigeration performance through precision temperature control.
- High Power Reliable Refrigeration System**
Fast pull down, optimal internal air circulation and reliable refrigeration, maintaining colder temperatures for food preservation.
- Standard LED Lighting System**
Ultra bright 250 LUX, low energy interior LED illumination system provides optimal merchandise display visibility. Low profile, door mounted, clip-in LED design.
- Spark-Free Refrigeration Components**
All glass door merchandiser models have spark free refrigeration components for optimal safety, per UL requirements.
- Low Noise Refrigeration Unit**
Rated under 65 DB.

INDUSTRY'S FIRST 40/80 WARRANTY
40 months parts and labor / 80 months compressed life expectancy

MVP
www.mvpgroupcorp.com

COOL-IT Signature
2488 W. 14th Street, Suite 100, Torrance, CA 90501
Tel: 310.209.2800 / Toll Free: 800.278.8347
Fax: 310.209.2801 / Toll Free: 877.965.8888
sales@mvpgroupcorp.com

[pdf] Warranty

LX 14RB DOWNLOAD SPEC SHEET Kool It 24 75 Single Glass Door Display Cooler 11 5 Cu F

iFoodEquipment.ca 40 months parts and labour warranty 80 on the compressor only 2023 v 1687453354
cdn.shopify.com/files/1/1643/3881/

LX-14RB SINGLE GLASS DOOR MERCHANDISER REFRIGERATOR Medium single door merchandiser refrigerator energy efficient, eco-friendly HC refrigerant with low charge, spark-free components, professional technical service and unmatched warranty. KEY FEATURES Eco-Friendly Refrigerant Environmentally friendly R...
lang:en score:30 filesize: 11.19 M page_count: 2 document date: 2023-05-16

LX-14RB
SINGLE GLASS DOOR
MERCHANDISER REFRIGERATOR

Medium single door merchandiser refrigerator energy efficient, eco-friendly HC refrigerant with low charge, spark-free components, professional technical service and unmatched warranty.



KEY FEATURES

- Eco-Friendly Refrigerant**
Environmentally friendly R290 hydrocarbon refrigerant has low global warming potential (GWP). Meets all USA, California & Canada refrigerant & energy standards.
- Digital Temperature Display**
Electronic controls ensure optimal refrigeration performance through precision temperature control.
- High Power Reliable Refrigeration System**
Fast pull down, optimal internal air circulation and reliable refrigeration, maintaining colder temperatures for food preservation.
- Standard LED Lighting System**
Ultra bright 250 LUX, low energy interior LED illumination system provides optimal merchandise display visibility. Low profile, door mounted, clip-in LED design.
- Spark-Free Refrigeration Components**
All glass door merchandiser models have spark free refrigeration components for optimal safety, per UL requirements.
- Low Noise Refrigeration Unit**
Rated under 65 DB.

INDUSTRY'S FIRST 40/80 WARRANTY
40 months parts and labor / 80 months compressed life expectancy

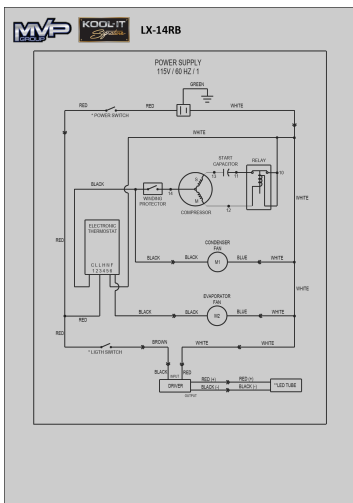
MVP
www.mvpgroupcorp.com

COOL-IT Signature
2488 W. 14th Street, Suite 100, Torrance, CA 90501
Tel: 310.209.2800 / Toll Free: 800.278.8347
Fax: 310.209.2801 / Toll Free: 877.965.8888
sales@mvpgroupcorp.com

[pdf] Specifications Warranty

LX 14RB Kool It 11 5 Cu Ft Black Single Glass Door Merchandiser Refri Vanguard Store Fixtures Inc LX
Specs.cdn.shopify.com/files/1/0784/4941/0346 Specs v 1711871163 IncKool Signature 24RB RefrigeratoKool
RefrigeratoLX SpecsLX 1LX 1cdn 1711871163cdn 0379 1801 5627 1704377557cdn 1704377557 ||| |||

LX-14RB SINGLE GLASS DOOR MERCHANDISER REFRIGERATOR Medium single door merchandiser refrigerator energy efficient, eco-friendly HC refrigerant with low charge, spark-free components, professional technical service and unmatched warranty. KEY F
LX-14RB SINGLE GLASS DOOR MERCHANDISER REFRIGERATOR Medium single door merchandiser refrigerator energy efficient, eco-friendly HC refrigerant with low charge, spark-free components, professional technical service and unmatched warranty. KEY FEATURES Eco-Friendly Refrigerant Environmentally friendly R...
lang:en score:29 filesize: 4 M page_count: 2 document date: 2023-06-10



[pdf]

Product Info Kool It LX 14RB 24 3 4" One Section Glass Door Merchandiser 1 Right Hinge 115V
Restaurant And More Wholesale Supplies Foodservice Equipment 124 LX14RB info restaurantandmore
2022 08 |||
LX-14RB POWER SUPPLY 115V / 60 HZ / 1 GREEN RED RED * POWER SWITCH
WHITE WHITE BLACK ELECTRONIC THERMOSTAT RED C L L H N F 1 2 3 4 5 6
RED RED * LIGTH SWITCH START CAPACITOR S 13 11 14 WINDING
PROTECTOR M COMPRESSOR 12 RELAY 10 WHITE BLACK BLACK
CONDENSER FAN M1 BLUE WHITE BL...
lang:en score:25 filesize: 152.4 K page_count: 1 document date: 2021-10-20

COOL-IT Signature

LX-14RB
SINGLE GLASS DOOR
MERCHANDISER REFRIGERATOR

Energy efficient, eco-friendly HC refrigerant with low charge, spark-free components, and the lowest utility costs in its category.



KEY FEATURES

- Eco-Friendly Refrigerant**
Environmentally friendly R290 hydrocarbon refrigerant has low global warming potential (GWP). Meets all USA, California & Canada refrigerant & energy standards.
- Digital Temperature Display**
Electronic controls ensure optimal refrigeration performance through precision temperature control.
- High Power Reliable Refrigeration System**
Fast pull down, optimal internal air circulation and reliable refrigeration, maintaining colder temperatures for food preservation.
- Standard LED Lighting System**
Ultra bright 250 LUX, low energy interior LED illumination system provides optimal merchandise display visibility. Low profile, door mounted, clip-in LED design.
- Spark-Free Refrigeration Components**
All glass door merchandiser models have spark free refrigeration components for optimal safety, per UL requirements.

Signature 40/80 Warranty
40 months parts and labor / 80 months compressed life expectancy

MVP
www.mvpgroupcorp.com

COOL-IT Signature
2488 W. 14th Street, Suite 100, Torrance, CA 90501
Tel: 310.209.2800 / Toll Free: 800.278.8347
Fax: 310.209.2801 / Toll Free: 877.965.8888
sales@mvpgroupcorp.com

[pdf] Warranty

Kool It LX14RB 24 75 Inch Freestanding Glass Door Refrigerator Appliances Connection
D6238ecdbe0065 static appliancesconnection attachments |||

LX-14RB SINGLE GLASS DOOR MERCHANDISER REFRIGERATOR Energy efficient, eco-friendly HC refrigerant with low charge, spark-free components, and the lowest utility costs in its category. Eco-Friendly Refrigerant Environmentally friendly R290 hydrocarbon refrigerant has low Global Warming Potential ...
lang:en score:23 filesize: 3.01 M page_count: 2 document date: 2021-11-29

