

MORENTO HY1800

MORENTO HY1800 Air Purifier Replacement Filter User Manual

Brand: MORENTO

Model: HY1800 Genuine Replacement Filter

1. INTRODUCTION

This manual provides comprehensive instructions for the MORENTO HY1800 Genuine Air Purifier Replacement Filter. This True HEPA filter with activated carbon is designed to maintain the optimal performance of your MORENTO HY1800 air purifier, ensuring clean and fresh air in your environment. Please read this manual carefully before installation and use.

2. PRODUCT FEATURES

- **Genuine Replacement:** Specifically designed for MORENTO HY1800 and compatible with CHIVALZ HY1800 Air Purifiers, ensuring a certified fit and maximum filtration efficiency.
- **True HEPA Filtration:** Captures 99.97% of airborne pollutants as small as 0.3 microns, including pollen, pet dander, dust, and other tiny particles.
- **Activated Carbon Layer:** Features a new formula with double carbon content for enhanced absorption and decomposition of odors from pets, smoke, cooking fumes, and VOCs, greatly extending the filter's service life.
- **Three-Stage Filtration Structure:** Combines a fine primary filter, True HEPA filter, and activated carbon filter for comprehensive air purification.
- **Optimal Performance:** Maintains the peak performance of your MORENTO air purifier, providing a safer, cleaner, and more breathable environment.

True HEPA 3-Stage Filter

360 °High efficiency absorption, high efficiency filtration

Activated Carbon Filter

absorption and decomposition
of odors from pet,smoke,
cooking fumes

True HEPA Filter

Captures 99.97% of airborne
pollutants 0.3 microns in size

Fine Primary Filter

Captures large airborne pollutants

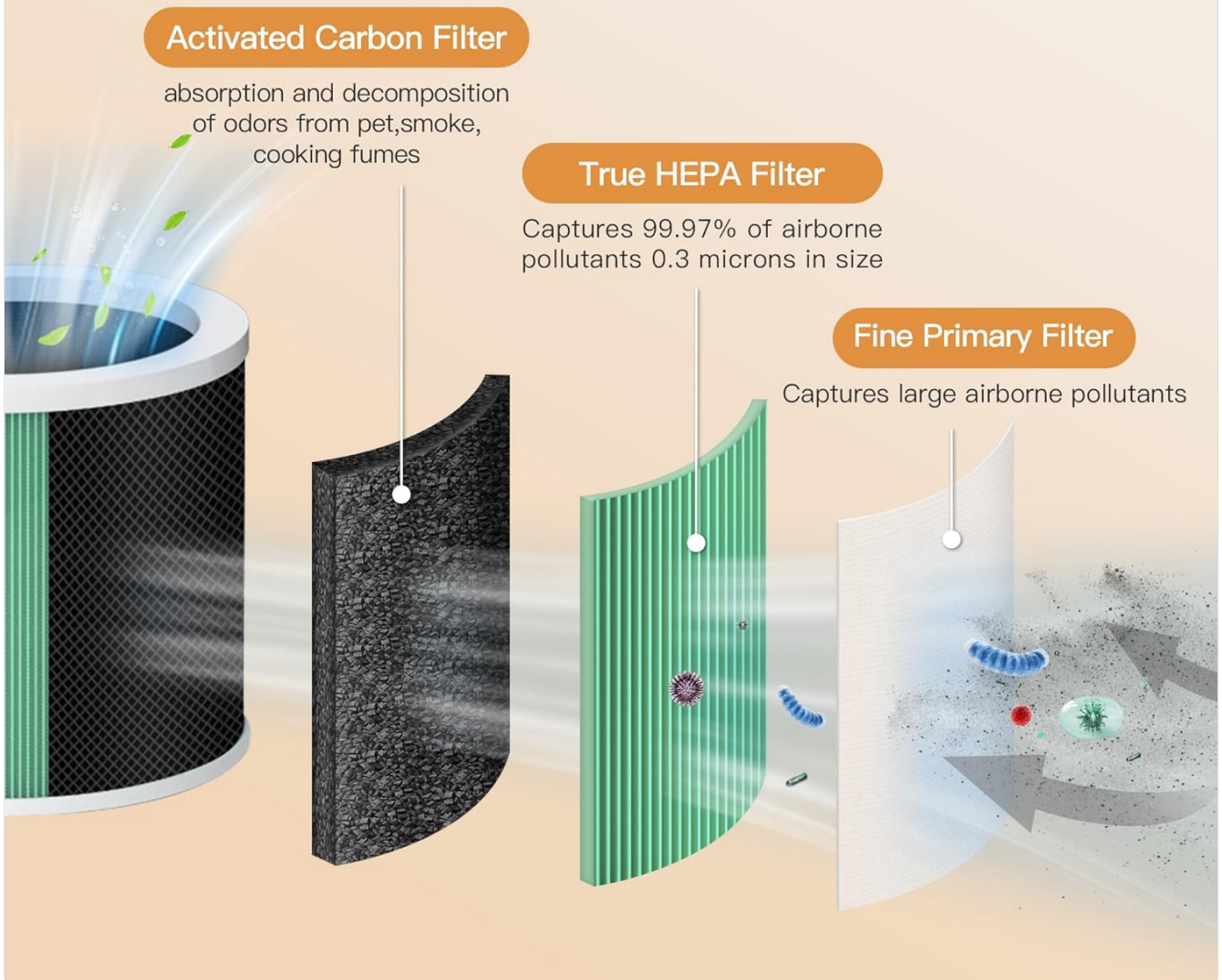


Figure 1: Diagram illustrating the three-stage filtration process of the True HEPA filter.

High Performance

The True HEPA Filter remove
99.97% of air contaminants



Figure 2: Visual representation of the filter capturing various airborne contaminants like dust, pollen, odor, PM2.5, and formaldehyde.

3. SETUP AND INSTALLATION

Follow these steps to replace the filter in your MORENTO HY1800 air purifier:

1. Step 1: Prepare the Air Purifier

Turn off and unplug your MORENTO HY1800 air purifier from the power outlet.

2. Step 2: Remove the Bottom Cover

Carefully twist the bottom cover of the air purifier counter-clockwise to unlock and remove it.

3. Step 3: Remove the Old Filter

Gently pull out the used filter from the air purifier and dispose of it properly.

4. Step 4: Insert the New Filter

Place the new MORENTO HY1800 replacement filter into the air purifier. Ensure it is seated correctly.

5. Step 5: Replace the Bottom Cover

Align the bottom cover and twist it clockwise to lock it back into place.

6. Step 6: Power On and Reset Filter Indicator

Plug in the air purifier and power it on. To reset the filter indicator, press and hold the power button for 5-7 seconds until you hear 3 beeps. The red power indicator will flash 3 times and then turn white, indicating a successful reset.

How to Replace the Filter

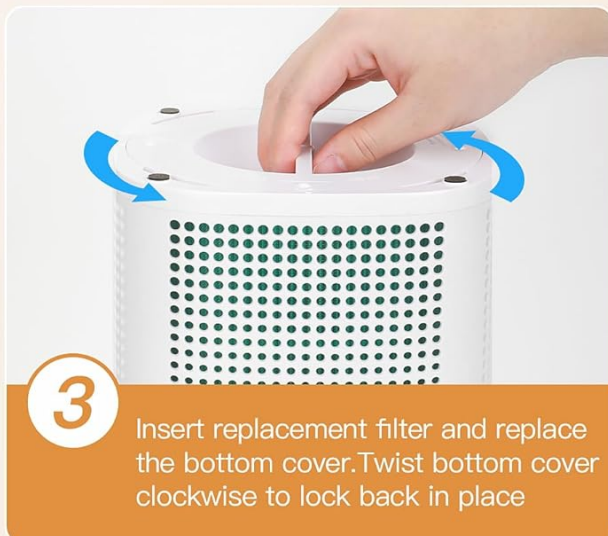


Figure 3: Visual step-by-step guide for filter replacement.

Your browser does not support the video tag.

Video 1: Official video demonstrating how to replace the HY1800 filter.

4. OPERATING

Once the new filter is installed and the indicator is reset, your MORENTO HY1800 air purifier is ready for operation. The filter is designed to work continuously to purify the air in your space. The air purifier will indicate when the filter needs replacement, typically by a red light on the control panel.

Perfect Fit

Off-brand filter changes can cause damage to your air purifier



Figure 4: The MORENTO HY1800 air purifier with its genuine replacement filter, highlighting perfect fit.

360° Air Intake Design

Refresh the air in a space of **108ft²**



Bedrooms



Dorm Rooms



Nurseries



Home Offices

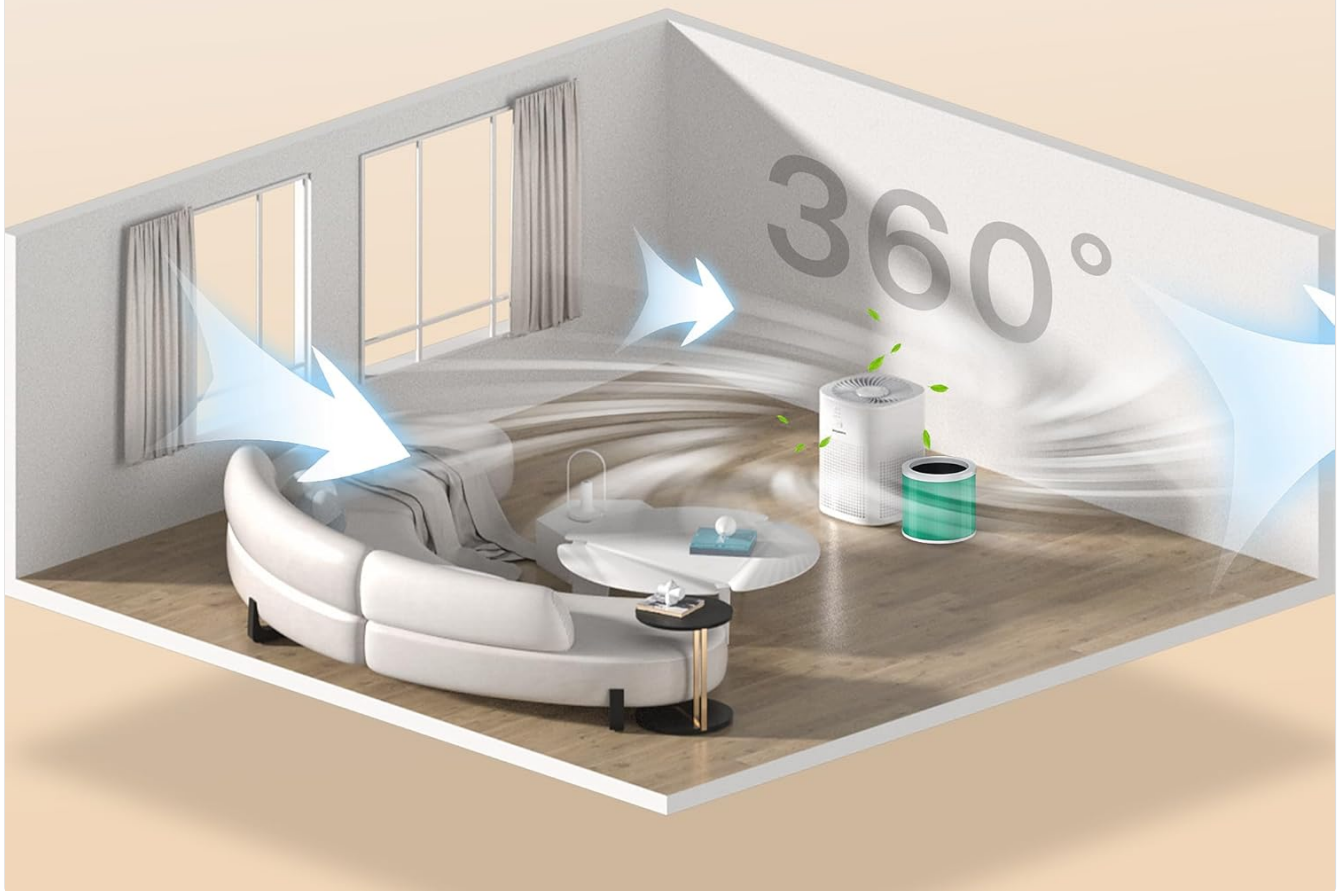


Figure 5: Diagram illustrating the 360-degree air intake design of the air purifier for efficient air circulation.

5. MAINTENANCE

The service life of the genuine MORENTO HY1800 air purifier replacement filter is generally 2200 hours. It is recommended to replace the filter every 6 months under normal usage conditions to ensure optimal air purification performance. This filter is unwashable and should be replaced, not cleaned.

6. TROUBLESHOOTING

- **Filter Indicator Not Resetting:** If the filter indicator light remains red after replacement, ensure you have pressed and held the power button for the full 5-7 seconds until you hear 3 beeps and the light turns white. Repeat the reset process if necessary.

- **Unusual Odor After Replacement:** A slight odor may be present initially with a new filter. Allow the air purifier to run for a few hours in a well-ventilated area. If the odor persists, ensure the filter is genuine and properly installed. Contact customer support if the issue continues.
- **Reduced Airflow/Efficiency:** If you notice reduced airflow or purification efficiency before the recommended replacement interval, check for any obstructions around the air intake or outlet. Ensure the filter is correctly seated and the bottom cover is securely locked.

7. SPECIFICATIONS

Brand Name	MORENTO
Model Info	HY180013P
Item Weight	6.7 ounces
Product Dimensions	5.98 x 5.98 x 5.24 inches
Material Type	Carbon Fiber
Included Components	HY1800 Filter
Compatible Air Purifier Models	MORENTO HY1800, CHIVALZ HY1800

8. SAFETY INFORMATION

- Always unplug the air purifier before attempting any maintenance, including filter replacement.
- Do not wash or attempt to clean the filter; it is designed for replacement only.
- Keep new and used filters out of reach of children and pets.
- Dispose of used filters according to local regulations.

9. WARRANTY AND SUPPORT

For warranty information regarding your MORENTO HY1800 Genuine Air Purifier Replacement Filter, please refer to the product packaging or the official MORENTO website. For technical support or further assistance, please contact MORENTO customer service through their official channels.