

Nylavee SK100

Nylavee SK100 Computer Sound Bar User Manual

Model: SK100



1. INTRODUCTION

Thank you for choosing the Nylavee SK100 Computer Sound Bar. This manual provides essential information for setting up, operating, and maintaining your device. Please read it thoroughly to ensure proper use and to maximize your audio experience.

The Nylavee SK100 is designed to deliver high-fidelity sound for various devices, including computers, laptops, phones, tablets, and gaming consoles. It features versatile connectivity options, including Bluetooth 5.0 and a 3.5mm auxiliary input, along with a convenient single-knob control and a built-in microphone.

2. PACKAGE CONTENTS

Please check the package for the following items:

- 1x Nylavee SK100 Computer Sound Bar
- 1x 3.5mm Audio Cable
- 1x User Manual (this document)

3. PRODUCT OVERVIEW

The Nylavee SK100 Sound Bar is engineered for clear and powerful audio. It integrates multiple speaker units and bass diaphragms within a compact design.



Front-angled view of the Nylavee SK100 Computer Sound Bar, highlighting its sleek design and integrated control knob.

3.1 Internal Components

The sound bar features a sophisticated internal acoustic design for optimal sound reproduction.

2 Ways to Connect



Connect with 3.5mm Jack (Cable: 3.3 ft)



Bluetooth 5.0



Cutaway view of the Nylavee SK100 Sound Bar, revealing its internal structure including four speaker units and two independent bass diaphragms for enhanced audio.

3.2 Control Knob

All primary functions are managed through a single, intuitive control knob located on the side of the sound bar.

One Knob for All

Achieve all functions' operation by rotate or press the knob



Note: For more operations guides please refer to the user manual

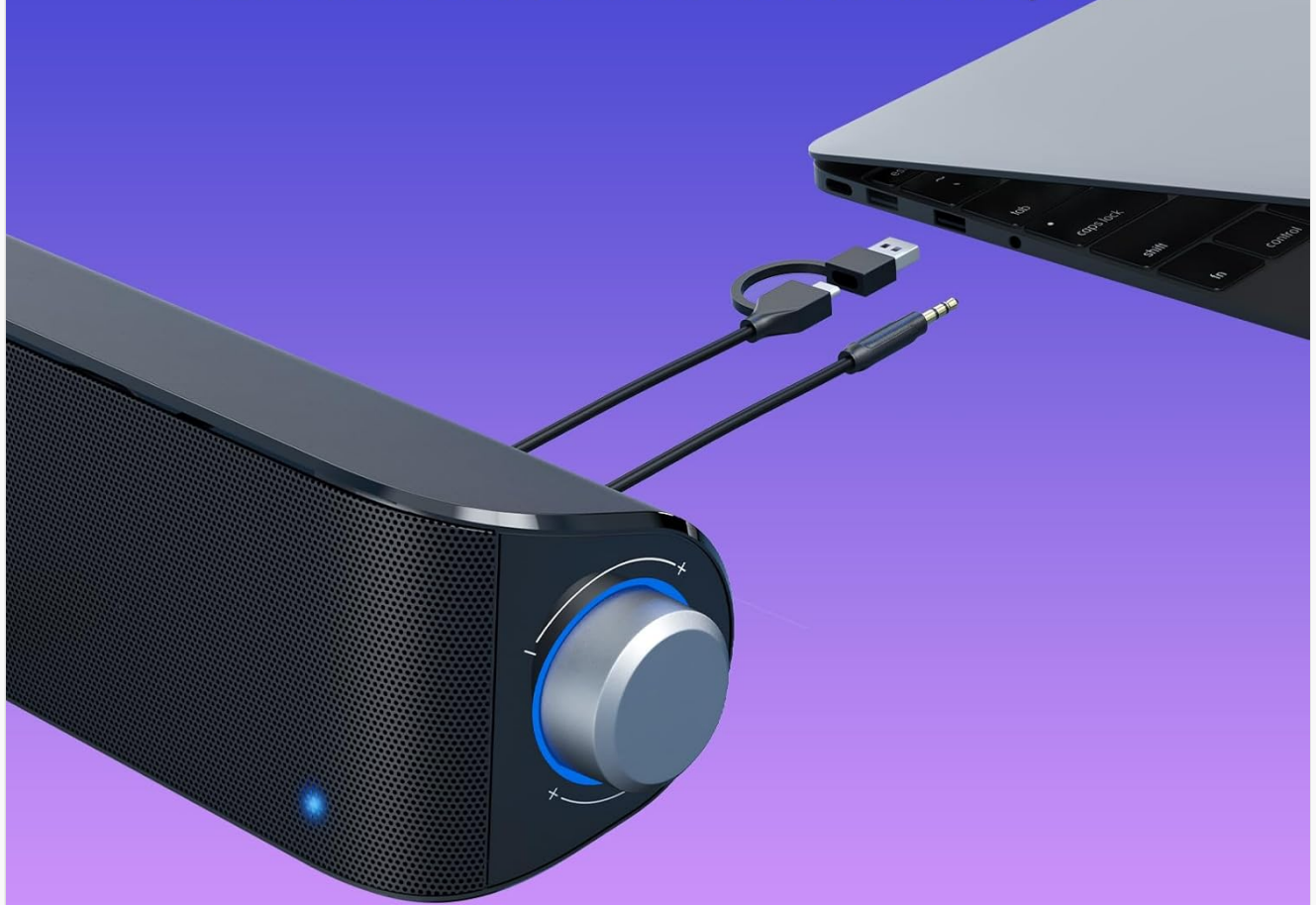
Close-up of the multi-function control knob on the side of the Nylavee SK100 Sound Bar, used for power, mode selection, and volume adjustment.

4. SETUP

Setting up your Nylavee SK100 Sound Bar is a straightforward process.

Setup in Seconds

Works with most devices—no drivers required



Heads up: The USB to USB-C cable is for power only—it doesn't support audio transfer.

Image demonstrating the simple setup process of the Nylavee SK100 Sound Bar, connecting via USB for power and 3.5mm audio cable to a laptop.

4.1 Power Connection

1. Locate the USB cable attached to the sound bar.
2. Plug the USB-A connector into an available USB port on your computer, laptop, or a standard 5V USB power adapter (not included). The sound bar will automatically power on.

4.2 Audio Connection

The sound bar supports two main audio connection methods:

High Quality Sound

Perfect combination of 6 units offer you superior auditory feast



Diagram illustrating the two primary connection methods for the sound bar: 3.5mm auxiliary cable and Bluetooth 5.0, compatible with various devices.

4.2.1 Wired Connection (3.5mm Aux-in)

1. Connect one end of the included 3.5mm audio cable to the AUX-in port on the sound bar.
2. Connect the other end of the 3.5mm audio cable to the headphone jack or audio output port of your device (e.g., computer, laptop, phone).
3. The sound bar will automatically switch to AUX mode.

4.2.2 Bluetooth Connection

1. Ensure the sound bar is powered on.
2. Press the control knob once to switch to Bluetooth mode. The indicator light will flash blue, indicating it is in pairing mode.
3. On your device (e.g., phone, tablet, computer), enable Bluetooth and search for available devices.
4. Select "Nylavee SK100" from the list of devices.
5. Once paired, the indicator light on the sound bar will turn solid blue, and you will hear a confirmation tone.

5. OPERATING INSTRUCTIONS

5.1 Power On/Off

The sound bar powers on automatically when connected to a USB power source. To turn it off, disconnect the USB power cable.

5.2 Mode Switching

Press the control knob once to cycle between AUX-in mode and Bluetooth mode.

5.3 Volume Control

Rotate the control knob clockwise to increase the volume and counter-clockwise to decrease the volume.

5.4 Built-in Microphone

The Nylavee SK100 features a built-in microphone, suitable for online meetings, voice calls, and in-game communication when connected to a compatible device.



The Nylavee SK100 Sound Bar positioned under a computer monitor, illustrating its built-in microphone capability for gaming, meetings, and calls.

6. SPECIFICATIONS

Detailed technical specifications for the Nylavee SK100 Computer Sound Bar:

Product Specifications

▶ Size	16.5*2.75*2.7 inch
▶ Mode	SK100
▶ Weight	1.75 lb
▶ Input	5V \equiv 2A Max
▶ Power	USB powered
▶ Harmonic Distortion	< 0.4%
▶ Frequency Response	150Hz ~ 20KHz
▶ Hi-Fi Surround Sound	4 speakers & 2 diaphragms
▶ Connection Options	Bluetooth 5.0 & 3.5mm Aux cable

A visual representation of the Nylavee SK100 Sound Bar's key specifications, including its dimensions (16.5 inches length, 2.75 inches height, 2.7 inches depth).

Feature	Specification
Model Name	SK100
Brand	Nylavee
Speaker Type	Soundbar

Connectivity Technology	Auxiliary, Bluetooth 5.0
Wireless Communication Technology	Bluetooth
Bluetooth Range	33 Feet (10 meters)
Audio Output Mode	Stereo (2.0 Channel)
Speaker Maximum Output Power	5 Watts
Frequency Response	20 KHz (Full Range)
Signal-to-Noise Ratio	72 dB
Power Source	Corded Electric (USB Powered)
Input Voltage	5 Volts
Control Method	Touch (Knob)
Material	Acrylonitrile Butadiene Styrene (ABS), Metal
Product Dimensions	2.36"D x 16"W x 2.76"H (6cm D x 40.6cm W x 7cm H)
Item Weight	2 Pounds (0.91 kg)
Mounting Type	Tabletop Mount
Compatible Devices	Computer, Laptop, Tablet, Xbox, iPhone
Water Resistance Level	Not Water Resistant

7. TROUBLESHOOTING

If you encounter issues with your Nylavee SK100 Sound Bar, please refer to the following common problems and solutions:

- **No Sound:**

- Ensure the USB power cable is securely connected to a working USB port or power adapter.
- Check the volume level on both the sound bar (rotate the knob clockwise) and your connected device.
- If using AUX-in, ensure the 3.5mm audio cable is fully inserted into both the sound bar and your device's audio output.
- If using Bluetooth, ensure the sound bar is paired correctly and selected as the audio output on your device. Try unpairing and re-pairing.
- Verify that your device's audio output is not muted or set to another output device.

- **Bluetooth Not Connecting/Pairing:**

- Ensure the sound bar is in Bluetooth pairing mode (blue indicator light flashing). Press the control knob once to switch modes if necessary.
- Make sure Bluetooth is enabled on your device and it is within the 33-foot range of the sound bar.
- Remove "Nylavee SK100" from your device's Bluetooth list and attempt to pair again.
- Restart both the sound bar (by unplugging and replugging USB) and your device.
- Avoid interference from other wireless devices.

- **Sound Distortion or Low Quality:**

- Reduce the volume on both the sound bar and your connected device to prevent clipping.
- Ensure the audio source is of good quality.
- Check the 3.5mm audio cable for damage or loose connections.
- If using Bluetooth, move closer to the sound bar to improve signal strength.

- **Microphone Not Working:**

- Ensure the sound bar is properly connected (Bluetooth or AUX-in, depending on device compatibility for microphone input).
- Check your device's sound settings to ensure the Nylavee SK100 is selected as the input (microphone) device.
- Verify that the microphone is not muted in your device's settings or the application you are using.

8. MAINTENANCE

To ensure the longevity and optimal performance of your Nylavee SK100 Sound Bar, follow these maintenance guidelines:

- **Cleaning:** Use a soft, dry cloth to wipe the surface of the sound bar. Do not use liquid cleaners, aerosols, or solvents, as they may damage the finish or internal components.
- **Storage:** When not in use for extended periods, store the sound bar in a cool, dry place away from direct sunlight and extreme temperatures.
- **Handling:** Avoid dropping the sound bar or subjecting it to strong impacts. Do not attempt to disassemble the unit, as this will void the warranty.
- **Water Exposure:** The sound bar is not water-resistant. Keep it away from liquids and moisture to prevent damage.

9. WARRANTY AND SUPPORT



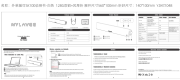



9.1 Warranty Information

The Nylavee SK100 Computer Sound Bar comes with an extended warranty. Please refer to the warranty card included in your package or contact Nylavee customer support for specific terms and conditions.

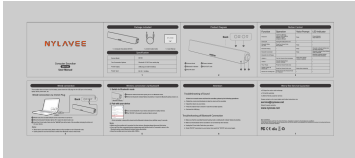
9.2 Customer Support

For any questions, technical assistance, or warranty claims, please contact Nylavee customer support through the retailer where you purchased the product or visit the official Nylavee website for contact information.



	NYLAVEE SK100 Computer Soundbar User Manual User manual for the NYLAVEE SK100 computer soundbar, detailing wired and Bluetooth connections, product specifications, operation, and troubleshooting.
	Nylavee SK100Li Computer Speakers User Manual User manual for the Nylavee SK100Li computer speakers, detailing features like Bluetooth 5.0, Hi-Fi sound, RGB lighting, and connectivity options for PC, desktop, and mobile devices.
	Nylavee SK100 Computer Soundbar User Manual User manual for the Nylavee SK100 Computer Soundbar, detailing setup, connection options (Bluetooth and wired), troubleshooting, and specifications.
	Nylavee SK400 Computer Speaker User Manual and Troubleshooting Guide Comprehensive user manual for the Nylavee SK400 computer speakers, covering setup, specifications, light control, troubleshooting common issues like no sound or static noise, and warranty information.
	NYLAVEE SK100 Computer Soundbar User Manual User manual for the NYLAVEE SK100 computer soundbar, detailing wired and Bluetooth connections, product specifications, operation, and troubleshooting.
	Nylavee SK100Li Computer Speakers User Manual User manual for the Nylavee SK100Li computer speakers, detailing features like Bluetooth 5.0, Hi-Fi sound, RGB lighting, and connectivity options for PC, desktop, and mobile devices.

Documents - Nylavee – SK100



[\[pdf\]](#) User Manual
SK100 User Manual Nylavee Terms of Use v 1746677430 cdn shopify s files 1 0607 2985 1966 |||
...
lang: **score:24** filesize: 632.42 K page_count: 1 document date: 2024-07-11