

- › [DARKBEAM](#) /
- › [DARKBEAM A300-uv365 UV 365nm Rechargeable Flashlight User Manual](#)

DARKBEAM A300-uv365

DARKBEAM A300-uv365 UV 365nm Rechargeable Flashlight User Manual

Model: A300-uv365



1. INTRODUCTION

Thank you for choosing the DARKBEAM A300-uv365 UV 365nm Rechargeable Flashlight. This device is engineered for precision detection tasks, utilizing a specialized 365nm ultraviolet LED. This wavelength is less visible to the naked eye compared to 395nm UV light, making it highly effective for revealing specific fluorescent materials and security features without excessive visible light interference.

Its robust aluminum alloy construction ensures durability, while its compact and portable design, complete with a detachable clip, offers convenience for various applications.



Image 1.1: DARKBEAM A300-uv365 UV 365nm Flashlight with its packaging and USB charging cable.

2. SETUP

2.1 Unpacking and Contents Verification

Carefully remove all items from the packaging. Ensure the following components are present:

- DARKBEAM A300-uv365 UV 365nm Flashlight
- 18650 Rechargeable Lithium-Ion Battery (pre-installed or separate)
- USB Charging Cable

2.2 Battery Installation and Initial Charge

The flashlight is supplied with a rechargeable battery. Before first use, it is crucial to ensure the battery is correctly installed and fully charged.

1. Unscrew the back cover of the flashlight.
2. Insert the 18650 battery with the positive (+) end facing towards the head of the flashlight.
3. Screw the back cover on tightly to ensure proper electrical contact.
4. Connect the provided USB charging cable to the flashlight's charging port and then to a standard 5V 1A USB power source (e.g., wall adapter, computer USB port).
5. The charging indicator light will illuminate red during charging. It will turn green once the battery is fully charged.
6. A full charge typically takes approximately 3 hours.



Image 2.1: Illustration of the USB charging port and indicator lights (Red for charging, Green for full charge).

3. OPERATING INSTRUCTIONS

3.1 Power On/Off

To operate the flashlight:

- Press the power button located on the side of the flashlight once to turn it on.
- Press the power button again to turn it off.

The flashlight features a single lighting mode for simplicity of use.

3.2 Focus Adjustment (Zoom Function)

The flashlight head can be adjusted to change the beam focus:

- **Zoom In:** Extend the flashlight head forward to narrow the UV beam, concentrating the light for precise detection over a smaller area.
- **Zoom Out:** Retract the flashlight head to widen the UV beam, providing broader coverage for scanning larger areas.

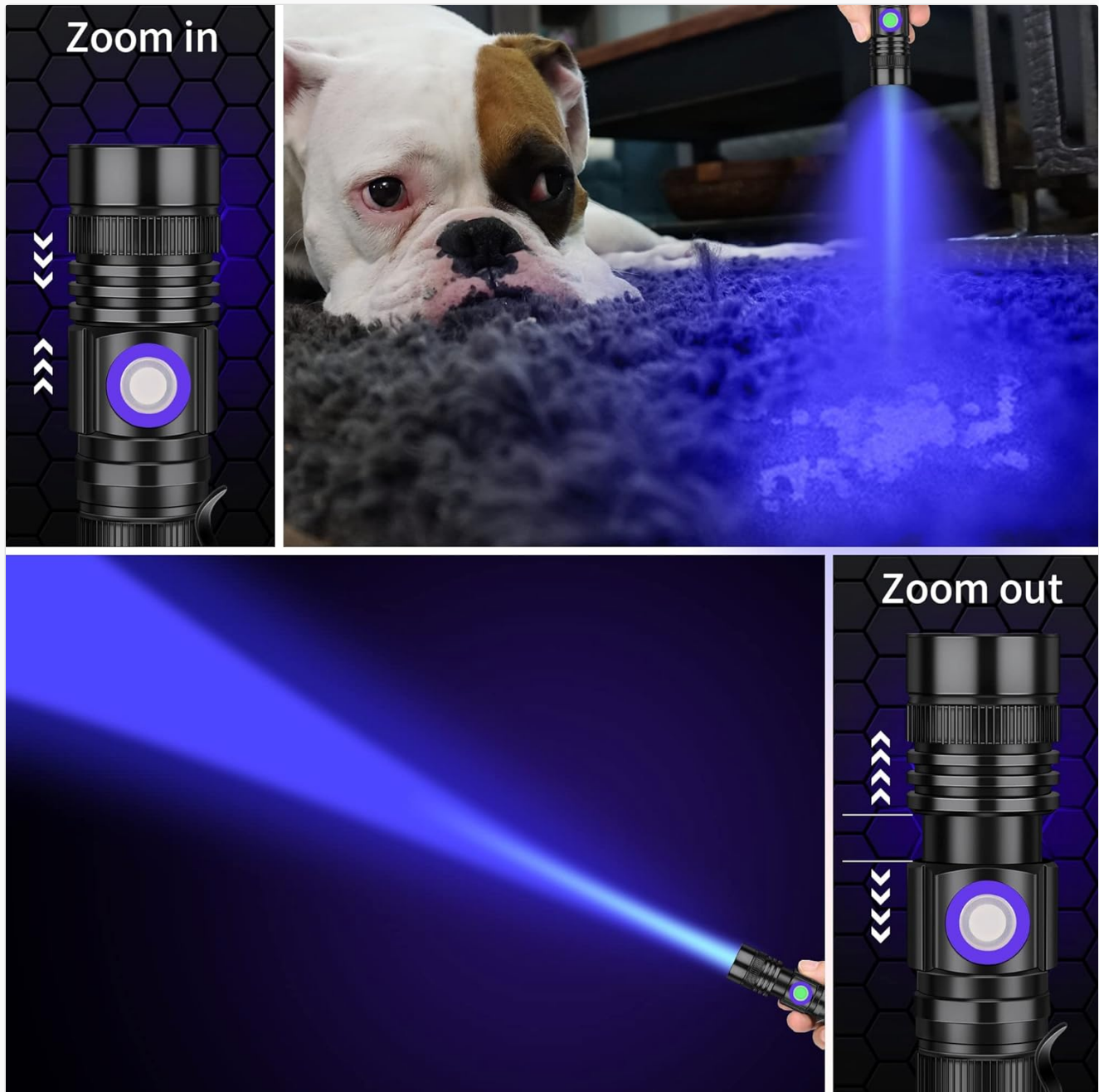


Image 3.1: Demonstrates the adjustable focus feature, allowing users to zoom in for concentrated light or zoom out for wider coverage, useful for tasks like pet urine detection.

3.3 Common Applications

The 365nm UV flashlight is suitable for a variety of detection and curing tasks:

- **Pet Urine & Stain Detection:** Effectively reveals dried pet urine, food stains, and other organic residues on carpets, upholstery, and hard surfaces.
- **Anti-Counterfeit Verification:** Authenticates currency, passports, driver's licenses, and other official documents by revealing hidden security threads and fluorescent markings.

- **Resin Curing:** Accelerates the curing process of UV-sensitive resins used in crafts, jewelry making, and dental applications.
- **Fluorescent Agent Detection:** Identifies fluorescent brightening agents in cosmetics, baby clothes, detergents, and other consumer products.
- **Mineral & Antique Appraisal:** Observes the fluorescent properties of certain minerals, gems, and antique items for identification and authentication.
- **Pest Detection:** Locates scorpions and other pests that fluoresce under UV light in dark environments.
- **AC Leak Detection:** When used with appropriate UV dye, it can help identify leaks in automotive or HVAC systems.
- **Cat Ringworm Detection:** Aids in identifying fungal infections like ringworm on pets, which may fluoresce under UV light.

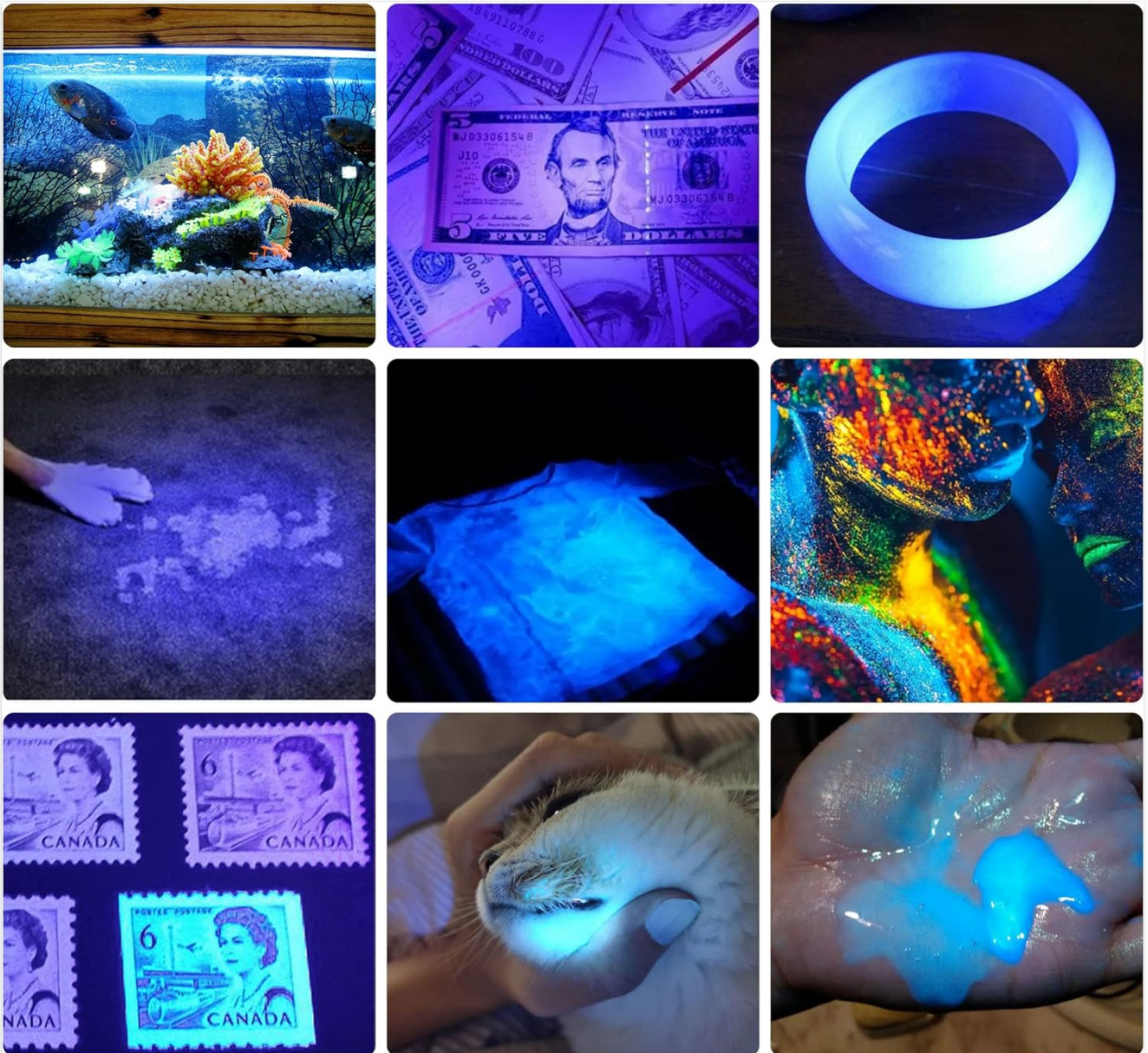


Image 3.2: Examples of the flashlight's utility in detecting counterfeit currency, fluorescent stamps, pet urine, and curing UV resin.

CAT RINGWORM DETECTION

Pet skin condition detection to protect pet health



Image 3.3: The UV flashlight being used for detecting potential ringworm on a cat's fur.

4. MAINTENANCE

4.1 Charging

Recharge the battery when the light output appears dim or inconsistent. For optimal battery longevity, avoid completely draining the battery before recharging. Always use the provided USB cable and a compatible 5V 1A USB power source.

4.2 Cleaning

To maintain performance and appearance:

- Wipe the flashlight body with a soft, slightly damp cloth.
- Keep the lens clean from dust and smudges to ensure maximum light output. Use a lens cleaning cloth if necessary.
- Do not use abrasive cleaners or solvents, as these can damage the finish or internal components.

4.3 Battery Care

If you experience flickering or reduced battery life, ensure the battery spring inside the flashlight is making good contact. You

may gently pull the spring to stretch it slightly if it appears compressed, then reinsert the battery and tighten the back cover securely.

4.4 Storage

When storing the flashlight for extended periods, ensure the battery is partially charged (around 50%) and store it in a cool, dry place away from direct sunlight and extreme temperatures.

5. TROUBLESHOOTING

If you encounter issues with your DARKBEAM A300-uv365 flashlight, please refer to the following common solutions:

Problem	Possible Cause	Solution
Flashlight does not turn on	Battery discharged Battery incorrectly inserted Back cover loose	Fully charge the battery Ensure positive (+) end faces flashlight head Tighten the back cover securely
Light flickers or is dim	Low battery charge Poor battery contact Dirty contacts	Recharge the battery Gently stretch battery spring; ensure secure fit Clean battery and flashlight contacts with a dry cloth
Charging indicator not working	Loose cable connection Faulty cable/adaptor	Ensure USB cable is firmly connected Try a different USB cable or power adapter

6. SPECIFICATIONS

Detailed technical specifications for the DARKBEAM A300-uv365 UV 365nm Rechargeable Flashlight:

Feature	Detail
Brand	DARKBEAM
Model Number	A300-uv365
Light Source Type	UV LED
UV Wavelength	365nm
Power Source	Battery Powered
Battery Type	1 x 18650 Lithium Ion (included)
Charging	USB Rechargeable (5V 1A input)
Charging Time	Approx. 3 hours
Runtime	Up to 8 hours
Material	Aluminum Alloy
Dimensions (L x W x H)	5.12" x 0.9" x 0.9" (13cm x 2.3cm x 2.3cm)
Item Weight	4.6 ounces (0.13 kg)
Water Resistance Level	Waterproof (JIPX4)

Feature	Detail
Included Components	Flashlight, 18650 Battery, USB Charging Wire



Image 6.1: The flashlight demonstrating its JIPX4 waterproof rating, suitable for use in various conditions.

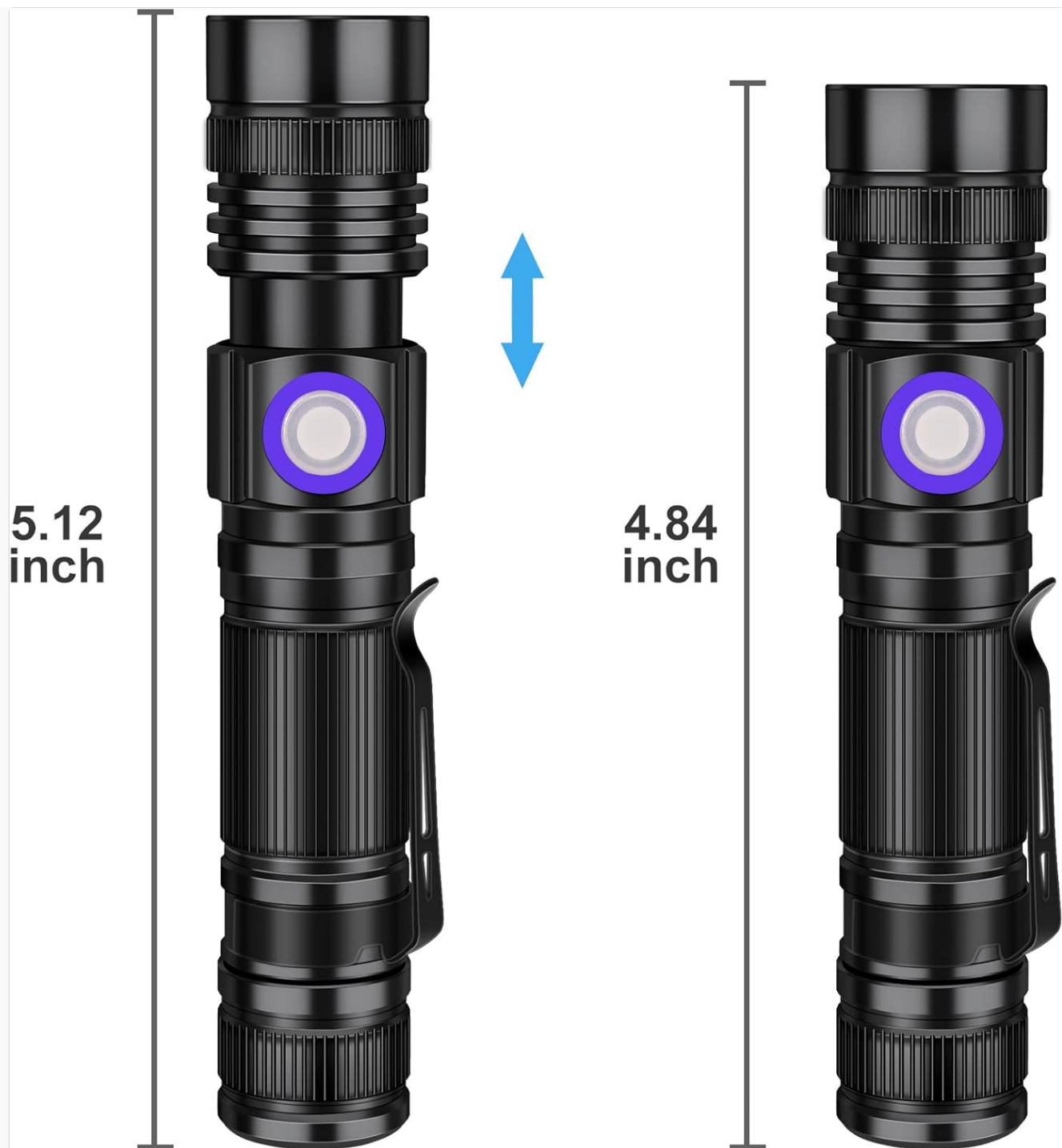


Image 6.2: Visual representation of the flashlight's dimensions, showing its compact size.







7. WARRANTY & SUPPORT

DARKBEAM is committed to providing quality products and customer satisfaction. For any inquiries, technical support, or warranty-related questions, please utilize the following contact method:

- **Online Support:** The manufacturer offers 7x24 hours online response. Please contact the seller directly through Amazon by navigating to the seller's store profile and clicking on the "Ask a question" option.

Please retain your purchase receipt as proof of purchase for any warranty claims.

Related Documents - A300-uv365

	<p>Darkbeam V5 Flashlight - Model V5 - Safety and Manufacturer Information</p> <p>Official information for the Darkbeam V5 flashlight, including manufacturer details, safety warnings regarding chargers and direct light exposure, and compliance information.</p>
	<p>PeriPage Mini Printer ALD-A300 User Manual and Instructions</p> <p>Comprehensive guide for the PeriPage Mini Printer ALD-A300, covering setup, paper changes, charging, app and computer printing, and printer head cleaning. Includes technical specifications and FCC compliance information.</p>
	<p>A300 Life Camera User Manual and Specifications</p> <p>User manual and product specifications for the A300 Life Camera by Shenzhen Xindaxing Digital Audio & Video Co., Ltd., detailing setup, Wi-Fi connectivity, recording, and technical parameters.</p>
	<p>Dell PowerScale Node Firmware Package 12.4.2 Release Notes</p> <p>This document provides release notes for Dell PowerScale Node Firmware Package version 12.4.2, detailing supported platforms, firmware versions, resolved and known issues, and upgrade procedures for Dell PowerScale and Isilon storage systems.</p>
	<p>TOSHIBA Satellite A300/A300D & Pro A300/A300D User Manual</p> <p>Comprehensive user guide for TOSHIBA Satellite A300/A300D and Satellite Pro A300/A300D portable personal computers. Covers setup, operation, safety guidelines, hardware features, troubleshooting, and regulatory information.</p>
	<p>NetApp ONTAP 9.9.1 Feature Overview: What's New</p> <p>Explore the new features and enhancements in NetApp ONTAP 9.9.1, including System Manager improvements, SAN advancements, and data protection updates. Learn about manual tier selection, NVMe/FC support, Active IQ integration, and more.</p>

