



Manuals.plus /

› LAUNCH /

› LAUNCH Creader Elite BMW OBD2 Scanner Instruction Manual

LAUNCH Creader Elite

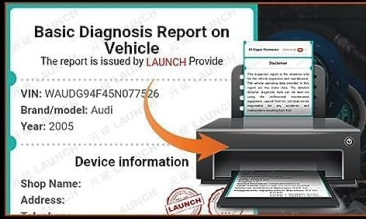
LAUNCH Creader Elite BMW OBD2 Scanner Instruction Manual

Model: Creader Elite | Brand: LAUNCH

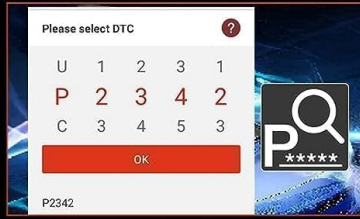
1. INTRODUCTION

The LAUNCH Creader Elite is a professional-grade OBD2 diagnostic scanner designed specifically for BMW, MINI, and Rolls-Royce vehicles manufactured between 1996 and 2023. This powerful bi-directional scan tool offers comprehensive full system diagnostics, a wide range of reset services, ECU coding capabilities, and lifetime free updates to ensure continuous compatibility and functionality. The device features a 4-inch LCD touchscreen, Wi-Fi connectivity for updates, and supports 11 languages for user convenience. It is built with a robust, orange-colored body with rubberized ends for durability and a secure grip.

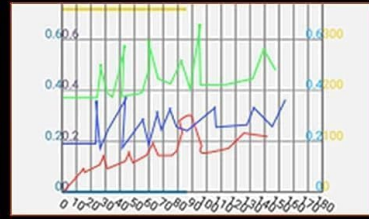
All-in-one LAUNCH BMW Diagnostic Tool provides a one-stop solution to your worry.



Share & Print Diagnostic Report



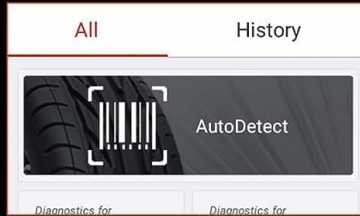
DTC Lookup



4-in-1 Live Data Stream



Auto VIN Scan



Diagnostic History



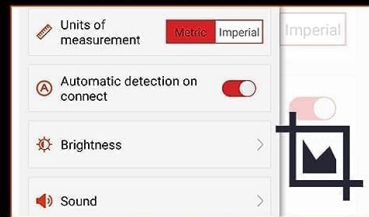
WIFI One-click UPGRADE



Battery Voltage Display



Data Recording & Playback



Screenshot



End User



Workshop



Used Car Dealers

Image: The LAUNCH Creader Elite diagnostic tool displaying its main menu with options like Diagnose, OBD II, Reset, Upgrade, Mall, and Settings. This image provides an overview of the device's user interface.

2. SETUP

2.1. Device Overview

The Creader Elite features a 4-inch high-resolution color touchscreen and three physical buttons at the bottom for navigation. The device's body is rubberized for enhanced durability. On the bottom of the tool, a dust cover protects a USB-C connector and a slot for a memory card.

LAUNCH OE-LEVEL DIAGNOSTIC SCANNER

Full Systems Full Functions Scan Tool For BMW For MINI For Rolls Royce



For BMW



FOR MINI



For Rolls Royce

Read/Clear DTCs, Read Live Data, ECU Info.

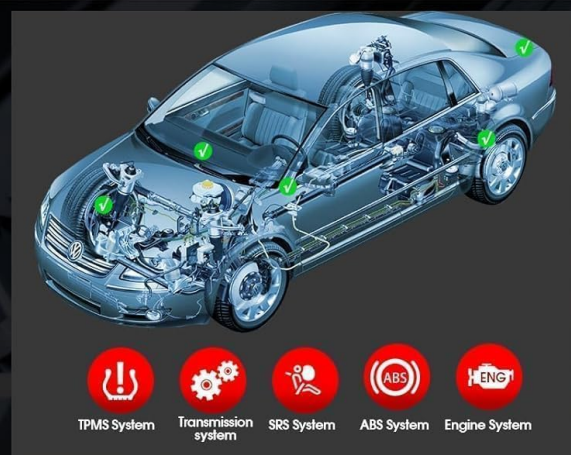
Bi-Directional Control (Active Test)

Full Systems In-Depth Diagnostics.

Coding, Retrofit, Personalization, Calibration

ALL Free Service Functions (Keep Growing)

Lifetime Free WiFi Upgrade, AUTOVIN, ...



Full System Diagnoses



Bi-Directional Control (Active Test)

Image: The LAUNCH Creader Elite diagnostic tool, showcasing its robust orange casing, 4-inch screen, and the attached OBD2 cable. A separate USB-C cable is also visible, highlighting the device's connectivity options.

2.2. Initial Setup and Registration

1. **Power On:** Connect the device to your vehicle's OBD2 port. The device will power on automatically.
2. **Language Selection:** Follow the on-screen prompts to select your preferred language.
3. **Time Zone:** Set the correct time zone for your location.
4. **Wi-Fi Connection:** Connect the device to a stable Wi-Fi network. This is crucial for software updates and device registration.
5. **Registration:** The device requires registration to access full diagnostic and update features. Use the provided QR code or visit the LAUNCH website to register your device using its serial number.
6. **Software Update:** After successful registration and Wi-Fi connection, navigate to the 'Upgrade' section to download and install the latest software for BMW, MINI, and Rolls-Royce.

3. OPERATING THE DEVICE

The main menu provides six primary functions: Diagnose, OBD II, Reset, Upgrade, Mall, and Settings.

3.1. Diagnose

This function is used for in-depth vehicle diagnostics. It offers several options:

- **AutoDetect:** The device attempts to automatically identify the vehicle's VIN and model.
- **Health Report:** Performs a comprehensive scan of all modules in the vehicle, identifies fault codes, and generates a full status report. This report can be shared.
- **System Scan:** Scans the vehicle to determine which modules are present and equipped.
- **System Selection:** Allows direct access to specific vehicle modules (e.g., PCM, TCM, ABS, IMMO) to read fault codes, clear codes, or view live data streams.

Your browser does not support the video tag.

Video: Demonstration of the Health Report function on the LAUNCH Creader Elite, showing how it scans various vehicle modules and displays diagnostic trouble codes (DTCs).

3.2. OBD II

This mode provides standard OBD II diagnostic functions, compatible with various vehicle brands (not limited to BMW/MINI/Rolls-Royce). While it may not offer full bi-directional control or all service functions for non-BMW brands, it allows access to basic and advanced OBD II functionalities:

- **Read I/M Readiness:** Checks if the vehicle is ready for a smog inspection.
- **Read Live Data:** Displays real-time data from various sensors (e.g., engine coolant temperature, oxygen sensor voltage). This data can be viewed in numerical format or as a graph, and can also be recorded for later review.
- **Read Freeze Frame:** Captures a snapshot of sensor data at the moment a fault code was set.
- **Read Fault Code (Mode \$03/\$07/\$0A):** Retrieves diagnostic trouble codes.
- **Clear Fault Code (Mode \$04):** Erases diagnostic trouble codes and turns off the Check Engine Light.
- **Test Results: O2 Sensor Monitor (Mode \$05):** Displays oxygen sensor monitoring test results.
- **Test Results: On-Board Monitoring Test (Mode \$06):** Accesses results of on-board diagnostic monitoring tests for specific components/systems.
- **Read Vehicle Information (Mode \$09):** Retrieves vehicle information such as VIN, calibration IDs, and calibration verification numbers.

3.3. Reset Services

The device supports a wide array of maintenance reset services for BMW, MINI, and Rolls-Royce vehicles:

- Oil Reset
- Transmission Reset
- EPB (Electronic Parking Brake) Reset
- SAS (Steering Angle Sensor) Service Reset
- Airbag Service Reset
- ABS Bleeding
- DPF (Diesel Particulate Filter) Regeneration
- Battery Replacement/Registration
- TPMS (Tire Pressure Monitoring System) Reset

- IMMO (Immobilizer) Service
- Injector Coding

ALL Maintenance Service Functions

Scheduled Maintenance Services for business boost

- ✓ Oil Reset
- ✓ Transmission Reset
- ✓ EBP Reset
- ✓ SAS Service Reset
- ✓ Airbag Service Reset
- ✓ ABS Bleeding
- ✓ DPF Regeneration
- ✓ Battery Replacement
- ✓ TPMS Reset
- ✓ IMMO Service
- ✓ Injector Coding
- and more...
- <Keep Growing>



Battery Register Used in register a new replacement battery



ABS Bleeding preventing the wheels from locking up during braking

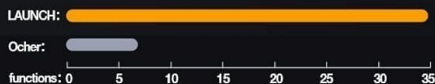


Image: A visual representation of the 'All Maintenance Service Functions' available on the LAUNCH Creader Elite, including Oil Reset, Transmission Reset, EBP Reset, SAS Service Reset, Airbag Service Reset, ABS Bleeding, DPF Regeneration, Battery Replacement, TPMS Reset, IMMO Service, and Injector Coding.

Your browser does not support the video tag.

Video: This video demonstrates the 'All Systems All Maintenance Service' capabilities of the LAUNCH BMW Scanner, highlighting its ability to perform various reset and service functions across different vehicle systems.

3.4. Upgrade

This function allows you to update the device's software. Ensure the device is connected to Wi-Fi or a computer via USB-C for updates.

3.5. Mall

The 'Mall' section typically allows users to purchase additional software packages or functionalities for other vehicle brands, if available.

3.6. Settings

Configure various device settings, including units of measurement, brightness, sound, network connection, time zone, and language.

4. SPECIAL FUNCTIONS

The LAUNCH Creader Elite offers advanced special functions beyond standard diagnostics:

4.1. ECU Coding

This feature allows for customization and improvement of vehicle comfort and functionality. It can be used to:

- Refresh hidden functions (e.g., fold/unfold mirrors automatically, unlock doors automatically).
- Disable annoying functions (e.g., auto start-stop, seat belt warning sounds).
- Perform retrofits (e.g., installing fog lights, retrofitting headlamps, changing battery type).



Coding Made Professional
-Backup -Personalization- Retrofit -

* Reprogram the adaptive data for certain components after repairs or replacements.
* unlock hidden features.

- Acoustical confirmation
- Active Rear Spoiler
- SiriusXM coding
- Digital speedometer coding
- Start & Stop button coding
- Remote window control unlocking
- Acoustic pedestrian protection
- Active Cruise Control
- Air conditioning setting memory
- Automatic Air Recirculation
- Ambient lighting brightness

and More

⚠ Not all options are available for all models or model years. Please contact us if you have any questions (kingbolen05@hotmail.com)

The image shows the LAUNCH Creader Elite diagnostic tool connected to a vehicle. The screen displays a 'Show Menu' for 'Coding' with various options listed. The tool is orange and has a yellow connector. The background shows a car's interior.

Image: The LAUNCH Creader Elite displaying 'Coding Made Professional' options, including Acoustical confirmation, Active Rear Spoiler, SiriusXM coding, Digital speedometer coding, Start & Stop button coding, Remote window control unlocking, Acoustic pedestrian protection, Active Cruise Control, Air conditioning setting memory, Automatic Air Recirculation, and Ambient lighting brightness.

Your browser does not support the video tag.

Video: This video illustrates the 'Coding/Program' function of the LAUNCH BMW Full Diagnostic Tool, demonstrating how users can access and modify vehicle settings.

4.2. Bi-directional Control (Active Tests)

This feature allows the diagnostic tool to send commands to vehicle ECUs and control specific components, helping to accurately locate issues. Examples include:

- Turning on the radiator fan
- Modulating the throttle
- Operating mirrors
- Turning ON/OFF lights
- Turning ON/OFF the horn
- Activating door lock actuators
- A/C compressor activation
- Activation radiator shutter
- EGR Test
- Injector Buzz Test
- IMRC Test
- Fuel Rail Pressure Test

ALL-IN-ONE BIDIRECTIONAL SCAN TOOL
Quickly Figure Out Vehicles Faults & Locate Issue
(Perform Same As LAUNCH X431 Series)

01 KEY IMMOBILIZER

- Add, Disable & Reprogram Keys
- Smart Keys Lost
- Rewrite Smart Keys
- Replace Smart Key ECU
- Reset/Relearn Key
- Replace Knob Ignition

02 BI-DIRECTIONAL (ACTIVE TEST)

Turn on The Radiator Fan	Modulate The Throttle	Open/Close Windows
Operate Mirrors	Turn ON/OFF The Lights	Turn ON/OFF The Sound horn
Test Door Lock Actuators	A/C Compressor Activation	Activate Parking Lock Solenoid
Activate Transmission Oil Pump	Activation Radiator Shutter	EGR Test
Injector Buz Test	IMRC Test	Fuel Rail Pressure Test

Image: The 'All-in-One Bidirectional Scan Tool' interface, detailing Key Immobilizer functions (Add/Disable & Reprogram Keys, Rewrite Smart Keys, Replace Smart Key ECU, Reset/Relearn Key, Replace Knob Ignition) and Bi-directional (Active Test) capabilities.

Your browser does not support the video tag.

Video: This video demonstrates the 'Special Function' capabilities of the LAUNCH BMW Full Diagnostic Tool, showcasing various advanced diagnostic and control features.

4.3. Key Immobilizer

This function assists with key-related operations, including:

- Adding, disabling, and reprogramming keys.
- Rewriting smart keys.
- Replacing smart key ECUs.
- Resetting and relearning keys.
- Replacing knob ignition components.

5. SPECIFICATIONS

- **Brand:** LAUNCH
- **Model:** Creader Elite
- **Power Source:** Battery Powered
- **Product Dimensions:** 3.46"L x 1"W x 6.3"H
- **Operating System:** Android
- **Screen Size:** 4 Inches
- **Internal Storage:** 16GB
- **Connectivity:** USB-C, Wi-Fi
- **Supported Languages:** 11 (including English, French, Spanish, German, Italian, Russian, Portuguese, Korean, Japanese, Polish, Chinese)

6. MAINTENANCE

6.1. Software Updates

Regular software updates are provided free for life. To ensure optimal performance and compatibility with the latest vehicle models, it is recommended to update the device regularly. Connect the device to a Wi-Fi network or a computer via the USB-C cable and navigate to the 'Upgrade' section in the main menu.

6.2. Data Management

The device allows for recording and playback of live data streams, as well as generating and sharing diagnostic reports. These features are useful for tracking vehicle performance over time and for sharing information with technicians or other users.

7. TROUBLESHOOTING

- **Device Not Powering On:** Ensure the device is securely connected to the vehicle's OBD2 port. Check the vehicle's battery voltage.
- **Connection Issues:** Verify the OBD2 cable is properly connected. For Wi-Fi issues, ensure the network is stable and the device is within range.
- **VIN Auto-Detection Failure:** If the device fails to automatically detect the VIN, manually enter the vehicle information for diagnosis.
- **Fault Codes Persist After Clearing:** If fault codes reappear immediately after clearing, it indicates an underlying issue that requires repair. Clearing codes only resets the warning light; it does not fix the problem.
- **Software Update Problems:** Ensure a stable internet connection during updates. If issues persist, try connecting the device to a computer for a wired update.

8. WARRANTY AND SUPPORT

For any service problems, suggestions, or inquiries regarding this product, please contact LAUNCH customer support. You can reach them via email at:

- **Overseas Service:** overseas.service@cnlaunch.com
- **Sales Inquiries:** sales@cnlaunch.com

Please refer to your local dealer for specific warranty information and support procedures.