

Hortsun Fluorescent Light Covers (2x4 ft, Blue)

Hortsun Fluorescent Light Covers User Manual

Model: Fluorescent Light Covers (2x4 ft, Blue)

Brand: Hortsun

INTRODUCTION

Thank you for choosing Hortsun Fluorescent Light Covers. These magnetic light covers are designed to effectively reduce harsh glare from fluorescent lights, creating a more soothing and comfortable environment. Ideal for classrooms, offices, hospitals, and other settings, they help minimize eye strain and headaches, promoting better concentration and well-being.



Image: A set of twelve blue fluorescent light covers, with one cover unfolded to show its full size.

PRODUCT DIMENSIONS

Each Hortsun Fluorescent Light Cover measures approximately 2 x 4 feet (60.96 x 121.92 cm), making them compatible with most standard fluorescent light fixtures.



Image: A diagram illustrating the dimensions of a single light cover, confirming its 2x4 ft size.

SETUP AND INSTALLATION

Hortsun Fluorescent Light Covers are designed for easy, tool-free installation thanks to their built-in magnets. Each cover features 10 magnets sewn into its edges, ensuring a secure and stable attachment to metal fluorescent light frames.

1. Ensure the fluorescent light fixture is clean and free of dust.
2. Carefully unfold one light cover.
3. Align the cover with the metal frame of your fluorescent light fixture.
4. Allow the built-in magnets to attach the cover firmly to the frame. Ensure the correct side faces up for optimal magnetic strength.
5. Adjust as needed to ensure the cover lies flat and covers the light evenly.

PRODUCT SIZE

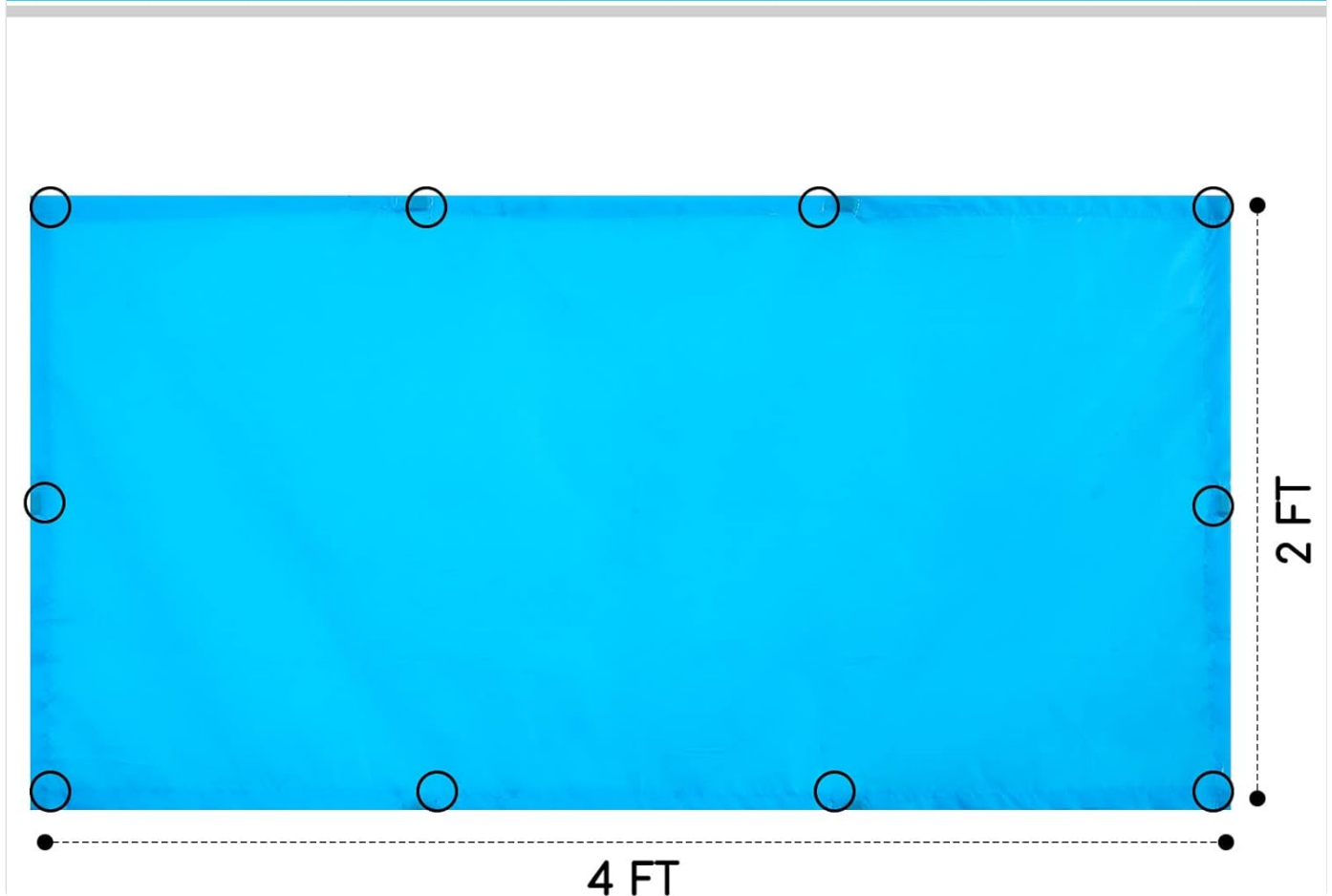


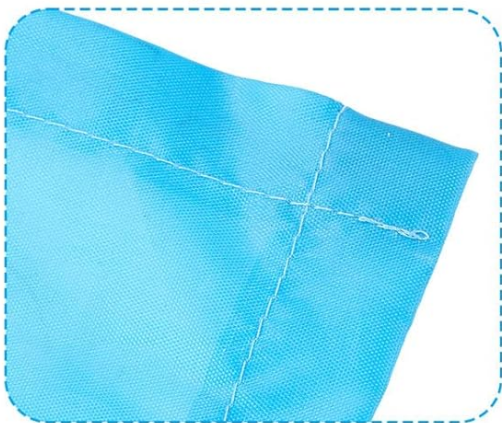
Image: Detail showing the fabric material and the integrated magnets along the edge of the cover.

Video: An official product video demonstrating the magnetic installation of the fluorescent light covers and their effect on light quality.

OPERATING INSTRUCTIONS

Once installed, the Hortsun Fluorescent Light Covers work passively to filter harsh light. The calming blue fabric helps to diffuse the light, reducing intensity and creating a more comfortable visual environment. This can significantly alleviate eye strain and headaches often associated with bright, unfiltered fluorescent lighting.

Washable and reusable



High quality magnets

Image: A visual comparison demonstrating how the light covers diminish harsh light, showing a clear difference in light quality.

MAINTENANCE

These fluorescent light covers are made from quality blue fabric and are designed to be washable and reusable. For cleaning, gently wipe with a damp cloth or hand wash with mild soap and water. Allow to air dry completely before re-installation.

TROUBLESHOOTING

- **Covers not holding firmly:** Ensure the light fixture frame is metal and clean. Verify that the magnets are positioned correctly against the metal surface. If the covers are creased, gently iron on a low setting or allow them to hang for a period to relax the fabric.
- **Wrinkles or creases:** Due to packaging, covers may have some creases upon arrival. These typically relax over time once installed. For faster results, you may gently iron the fabric on a low heat setting, avoiding direct contact with the magnets.

SPECIFICATIONS

Feature	Detail
Brand	Hortsun
Model	Fluorescent Light Covers
Color	Blue
Material	Cloth
Dimensions (each)	2 x 4 ft (approx. 60.96 x 121.92 cm)
Installation Type	Magnetic (10 built-in magnets per cover)
Quantity	12 pieces per pack
Indoor/Outdoor Usage	Indoor
Voltage	120 Volts (for light fixture, not the cover itself)

WARRANTY AND SUPPORT

For any questions, concerns, or support regarding your Hortsun Fluorescent Light Covers, please contact the manufacturer directly through the retailer's platform or the contact information provided with your purchase. Please retain your proof of purchase for any warranty claims.