

WAFERLOCK C210

WAFERLOCK C210 Smart Padlock User Manual

Model: C210

1. INTRODUCTION

This user manual provides comprehensive instructions for the setup, operation, and maintenance of your WAFERLOCK C210 Smart Padlock. Please read this manual thoroughly before using the product to ensure proper functionality and safety.



Figure 1: WAFERLOCK C210 Smart Padlock and its mobile application interface.

2. KEY FEATURES

- **Enhanced Security:** Features a robust 9mm thick shackle and anti-picking design for superior protection.
- **IP68 Rated:** Fully waterproof and dustproof, making it suitable for reliable outdoor use in various weather conditions.
- **Multiple Unlocking Methods:** Offers three convenient ways to unlock – via the dedicated mobile app, an IC card (tag key), or a programmable PIN code.
- **Notification & History Log:** The mobile application allows you to view a detailed record of all unlock events, providing enhanced security monitoring.
- **Versatile Application:** Its sturdy and thick design makes it suitable for a wide range of uses, including securing fences, school lockers, warehouses, boats, cases, bicycles, and more.



スマート南京錠、スマートライフ
ICカード／PINコード／専用アプリ



ピッキング防水, 耐ピッキング
大切なものを守る



IP68
防水・防塵



リチウム電池CR2使用
長時間長持ち



Figure 2: Overview of the padlock's main features including smart functionality, IP68 rating, anti-picking, and long-lasting CR2 battery.

3. PACKAGE CONTENTS

Please verify that all items listed below are included in your package:

- WAFERLOCK C210 Smart Padlock Main Unit x 1
- Programming Card x 1
- IC Tag Key x 2
- CR2 Lithium Battery x 1
- L-shaped Hex Wrench x 1
- User Guide (Quick Start Guide) x 1
- Wire x 1 (Optional accessory for specific uses)
- Sticker x 1

箱の中身は？



Figure 3: Contents of the WAFERLOCK C210 Smart Padlock package.

4. SETUP GUIDE

4.1 Battery Installation

The WAFERLOCK C210 Smart Padlock is powered by a CR2 lithium battery. Follow these steps for installation:

1. Locate the battery compartment on the padlock.
2. Use the provided L-shaped hex wrench to loosen the screw securing the battery cover.
3. Carefully slide the knob to the correct position.
4. Insert the CR2 battery, ensuring correct polarity (+/-).
5. Replace the battery cover and tighten the screw firmly with the hex wrench (turn counter-clockwise 3-5 times). Ensure the battery cover is securely fastened to maintain the product's durability and waterproof rating.

電池の装着方法

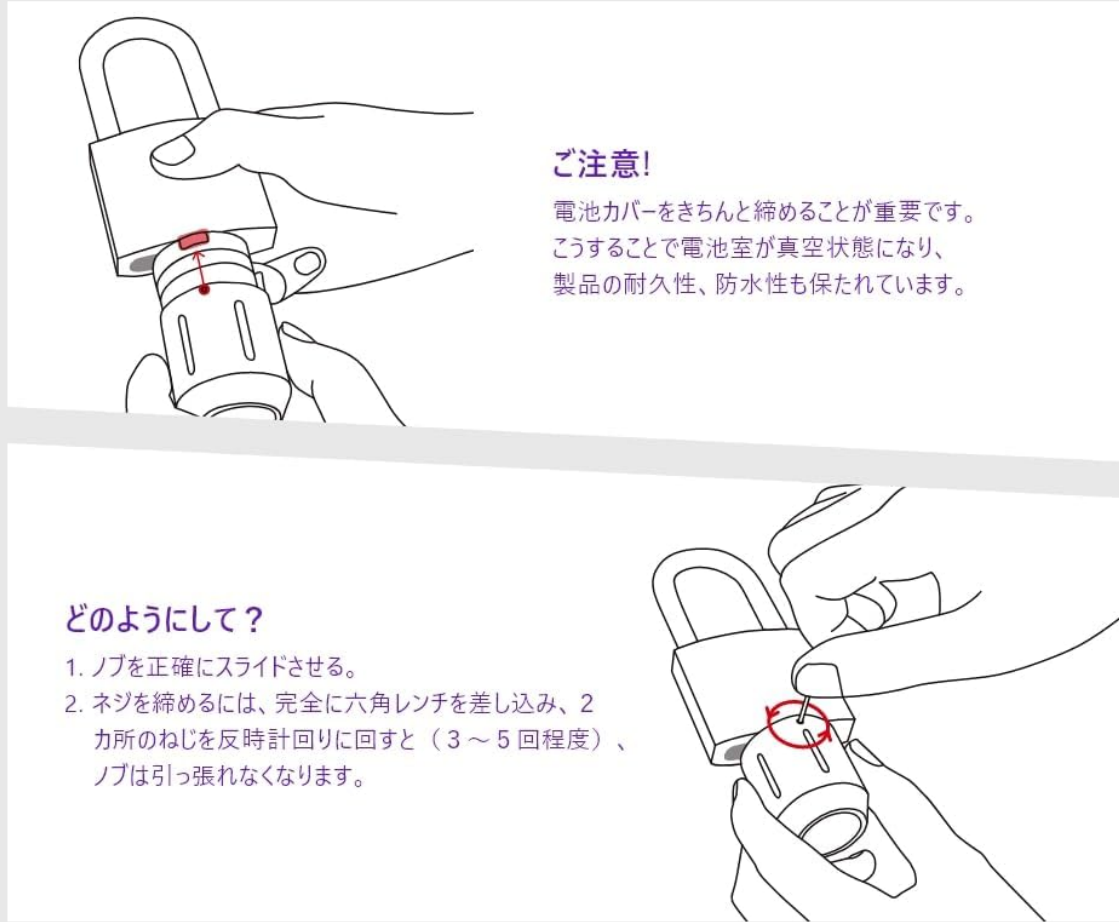


Figure 4: Battery installation process. Ensure the battery cover is tightly secured.

4.2 App Setup and Device Pairing

The WAFFERLOCK C210 can be controlled via a dedicated mobile application. Follow these steps to set up the app and pair your padlock:

1. Scan the QR code provided in the Quick Start Guide or search for "WAFFERLOCK" in your device's app store (App Store for iOS, Google Play for Android) to download and install the application.
2. Open the WAFFERLOCK app and create an account or log in if you already have one.
3. Follow the in-app instructions to add your C210 Smart Padlock. Ensure Bluetooth is enabled on your smartphone.
4. Once paired, you can manage access, view history, and unlock the padlock directly from the app.



WAFLERKEY



Figure 5: QR codes for downloading the WAFLERLOCK mobile application.

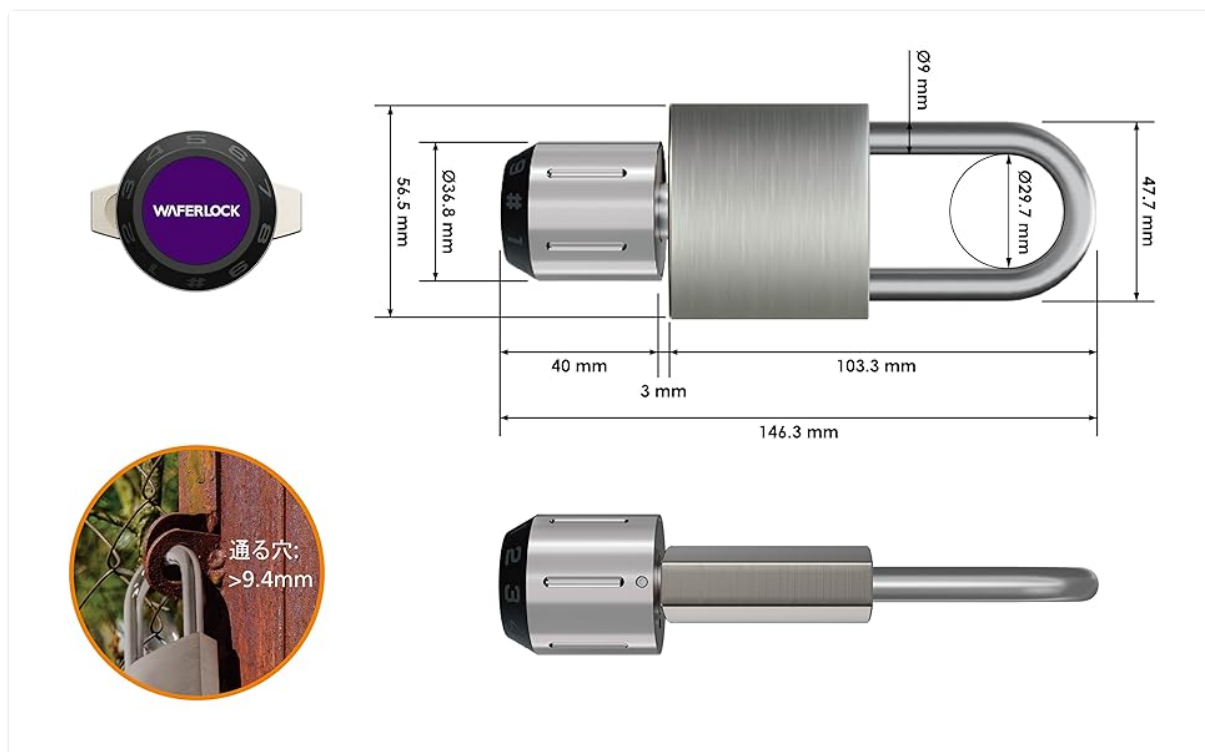


Figure 6: WAFLERLOCK app interface for access management and monitoring.

4.3 Registering IC Cards (Tag Keys) and PIN Codes

The padlock supports up to 2000 IC cards/tag keys and one PIN code. Use the app to register these access methods:

1. Open the WAFLERLOCK app and select your C210 padlock.
2. Navigate to the "Key Management" or "Access Control" section.
3. To add an IC card: Select "Add Card" and follow the prompts to tap the IC card/tag key against the padlock's sensor.

4. To set a PIN code: Select "Set PIN Code" and enter your desired 6-digit PIN. Confirm the PIN as instructed.
5. You can also grant temporary or scheduled access to guests via the app.

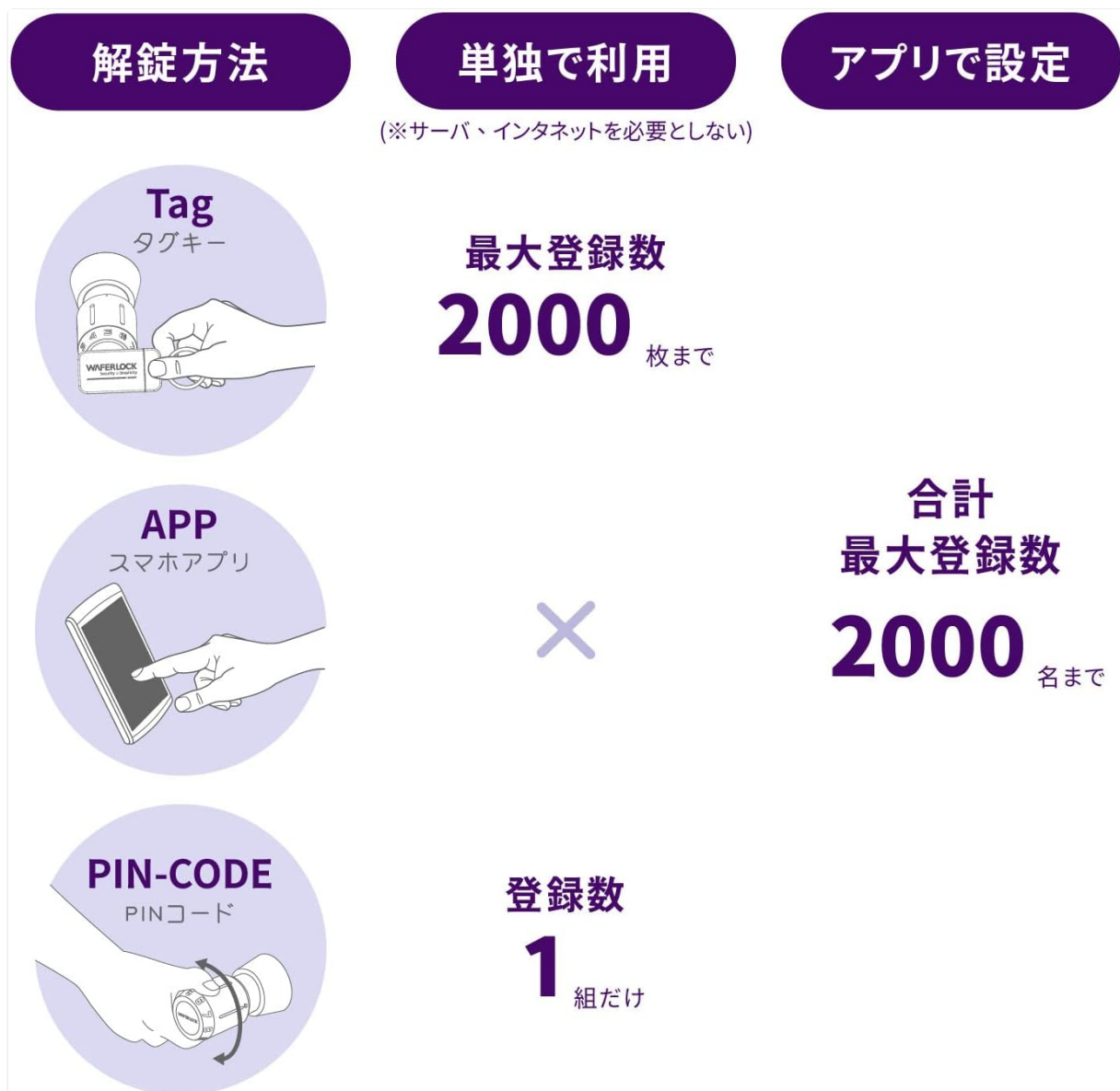


Figure 7: Overview of the three unlocking methods and their registration capacities.

5. OPERATING INSTRUCTIONS

5.1 Unlocking the Padlock

The WAFERLOCK C210 offers three methods for unlocking:

- **Via Mobile App:**
 - a. Ensure Bluetooth is enabled on your smartphone and the padlock is within range.
 - b. Open the WAFERLOCK app and select the padlock you wish to unlock.
 - c. Tap the "Unlock" button on the app interface. The padlock will click open.
- **Via IC Card (Tag Key):**
 - a. Hold a registered IC card or tag key against the padlock's sensor area (usually indicated by the WAFERLOCK logo).

b. The padlock will emit a sound and unlock if the card is recognized.

• **Via PIN Code:**

- a. Rotate the dial on the padlock to enter your registered PIN code.
- b. Once the correct PIN is entered, the padlock will unlock.

5.2 Locking the Padlock

To lock the padlock, simply push the shackle down into the padlock body until it clicks securely into place. The padlock will automatically lock.

6. MAINTENANCE

- **Cleaning:** Wipe the padlock with a soft, damp cloth. Do not use abrasive cleaners or solvents.
- **Battery Replacement:** The app will notify you when the battery is low. Replace the CR2 battery as instructed in Section 4.1. A fresh CR2 battery typically lasts for an extended period.
- **Shackle Lubrication:** Periodically apply a small amount of silicone-based lubricant to the shackle mechanism to ensure smooth operation, especially if used in harsh outdoor environments.
- **Firmware Updates:** Check the WAFERLOCK app regularly for any available firmware updates for your padlock. Updates can improve performance and security.

7. TROUBLESHOOTING

Problem	Possible Cause	Solution
Padlock does not unlock via app.	Bluetooth is off; Padlock is out of range; Low battery; App issue.	Ensure Bluetooth is on and phone is close to padlock. Check battery level in app. Restart app or phone. Try unlocking with IC card or PIN.
IC card/tag key not recognized.	Card not registered; Card damaged; Incorrect tapping position.	Verify card registration in the app. Try another registered card. Ensure proper contact with the sensor.
PIN code not working.	Incorrect PIN entered; PIN not set.	Double-check the PIN code. Set or reset the PIN code via the app.
Padlock not responding.	Battery depleted; Hardware malfunction.	Replace the battery. If the issue persists, contact customer support.

8. SPECIFICATIONS

Brand	WAFERLOCK
Model	C210
Dimensions (L x W x H)	15 x 6 x 4 cm
Weight	700 g

Color	Silver
Material	Zinc Alloy
Shackle Diameter	9 mm (0.35 inches)
Waterproof/Dustproof Rating	IP68
Battery Type	CR2 Lithium Battery
Unlocking Methods	Mobile App (Bluetooth), IC Card (MIFARE/FeliCa), PIN Code
Max. IC Card Registrations	2000
Max. PIN Code Registrations	1



Figure 8: Detailed dimensions of the WAFFERLOCK C210 Smart Padlock.



Figure 9: The IP68 waterproof and dustproof rating ensures durability in various environments.

9. WARRANTY AND SUPPORT

WAFERLOCK products are designed for durability and reliability. For warranty information and technical support, please refer to the official WAFERLOCK website or contact their customer service directly. Keep your purchase receipt as proof of purchase for warranty claims.

For further assistance, please visit the WAFERLOCK store on Amazon: [WAFERLOCK Amazon Store](#)

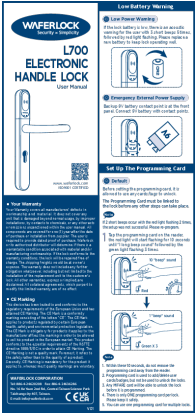
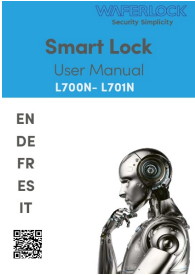
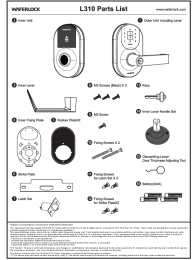

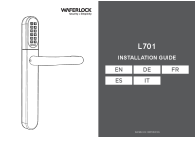
© 2024 WAFERLOCK. All rights reserved.

Related Documents - C210



[Waferlock L310 Smart Lock User Manual](#)

Comprehensive user manual for the Waferlock L310 Smart Lock, covering specifications, appearance, setup instructions, standalone mode programming, reminders, and FCC compliance information.

	<p>Waferlock L700 Electronic Handle Lock User Manual</p> <p>User manual for the Waferlock L700 electronic handle lock, detailing setup, app integration, standalone programming, warranty, and safety features.</p>
	<p>Waferlock L700N-L701N Smart Lock User Manual</p> <p>User manual for the Waferlock L700N-L701N Smart Lock, covering features, technical specifications, setup, programming, and troubleshooting.</p>
	<p>Waferlock L310 Parts List and Installation Guide Electronic Lock</p> <p>Comprehensive guide for the Waferlock L310 cylindrical electronic lock, featuring a detailed parts list and step-by-step installation instructions. Includes FCC compliance information.</p>
	<p>Waferlock L345 / WEL-3450 Electronic Lock User Manual</p> <p>Comprehensive user manual for the Waferlock L345 / WEL-3450 electronic door lock. It details product specifications, component descriptions, and step-by-step instructions for single-mode operation, including adding/deleting cards, setting alarms, battery management, external power, backup key usage, and mode configurations. Also includes important precautions and regulatory information.</p>
	<p>WAFERLOCK L701 Installation Guide: Step-by-Step Instructions</p> <p>Detailed installation guide for the WAFERLOCK L701 smart door lock, providing step-by-step instructions, parts list, and diagrams described textually. Learn how to install your keyless entry handle lock.</p>