

AMOCAM E-788Lock

AMOCAM DC12V Electric Double Headed Lock (Model E-788Lock)

Instruction Manual

1. INTRODUCTION

This manual provides comprehensive instructions for the installation, operation, and maintenance of your AMOCAM DC12V Electric Double Headed Lock, Model E-788Lock. This lock is designed for enhanced security and convenience, offering both mechanical and electronic control options, making it suitable for integration with access control systems and video intercom kits.

Please read this manual thoroughly before installation and use to ensure proper function and safety.

2. PRODUCT FEATURES

- **Dual Control Mechanism:** Features both mechanical and electronic lock heads, allowing unlocking via key, indoor button, or external electronic control (e.g., building intercom, access control system).
- **Durable Construction:** Manufactured from high-quality stainless steel with a wire-drawing process and oxidation plating for rust and corrosion resistance. The handle includes a rubber cover for enhanced durability.
- **High Security:** Incorporates an advanced mechanical design with a solid steel dead bolt, roller tongue, and high-strength spring. Includes 6 computerized keys for improved anti-theft protection.
- **Versatile Application:** Can function as a standalone mechanical lock or integrate with video intercom doorbell systems and access control systems for remote, password, or card-based electronic unlocking.
- **Easy Installation:** Designed to international standard sizes for easy replacement of similar products without requiring new drilling. Suitable for both left and right-hand doors, and compatible with various gate and door types including fence, wooden, glass, metal, and fireproof doors.

3. PACKAGE CONTENTS

Verify that all items listed below are present in your package:

- 1x Lock Body
- 1x Lock Head (Cylinder)
- 1x Knob
- 6x Computerized Keys
- 1x Strike Plate
- Mounting Screws and Hardware



Figure 1: Complete kit contents including the lock body, strike plate, cylinder, knob, six keys, and mounting screws.

4. SPECIFICATIONS

Specification	Detail
Brand	AMOCAM
Model Name	E-788Lock
Lock Type	Key Lock (Electric Control)
Special Feature	Dual Use (Mechanical & Electronic)
Material	Alloy Steel, Metal, Rubber, Stainless Steel
Dimensions (L x W x H)	6.1 x 4 x 1.4 inches
Item Weight	4 Pounds
Finish Type	Brushed
Power Requirement	DC12V, 1.5A (minimum)
UPC	721927699862



Figure 2: Technical diagram illustrating the precise measurements of the AMOCAM electric lock body and cylinder components.

5. INSTALLATION

Proper installation is crucial for the security and functionality of your electric lock. It is recommended that installation be performed by a qualified technician if you are unfamiliar with electrical wiring or door hardware.

5.1 Pre-Installation Checks

- Ensure the door or gate is structurally sound and can support the lock.
- Confirm that the power supply (DC12V, 1.5A) is available at the installation site.
- Determine the door's opening direction (left or right-hand) as the lock is reversible.

5.2 Mounting the Lock Body

1. Position the lock body on the inside of the door/gate frame at the desired height.
2. Mark the drilling points for the mounting screws and the cylinder hole.
3. Drill pilot holes for the screws and the main hole for the lock cylinder (approximately 1.18 inches diameter).
4. Secure the lock body to the door/gate using the provided screws.

5.3 Installing the Lock Cylinder and Strike Plate

1. Insert the lock cylinder through the drilled hole from the outside of the door/gate.
2. Connect the cylinder to the lock body mechanism on the inside.
3. Mount the strike plate on the door frame, aligning it precisely with the lock's bolt. Ensure smooth engagement and disengagement.

5.4 Wiring the Electric Lock

1. Connect the two power wires from the lock body to your DC12V, 1.5A power supply.
2. If integrating with an intercom or access control system, connect the lock's control wires to the appropriate output terminals of your system.
3. Ensure all connections are secure and insulated to prevent short circuits.

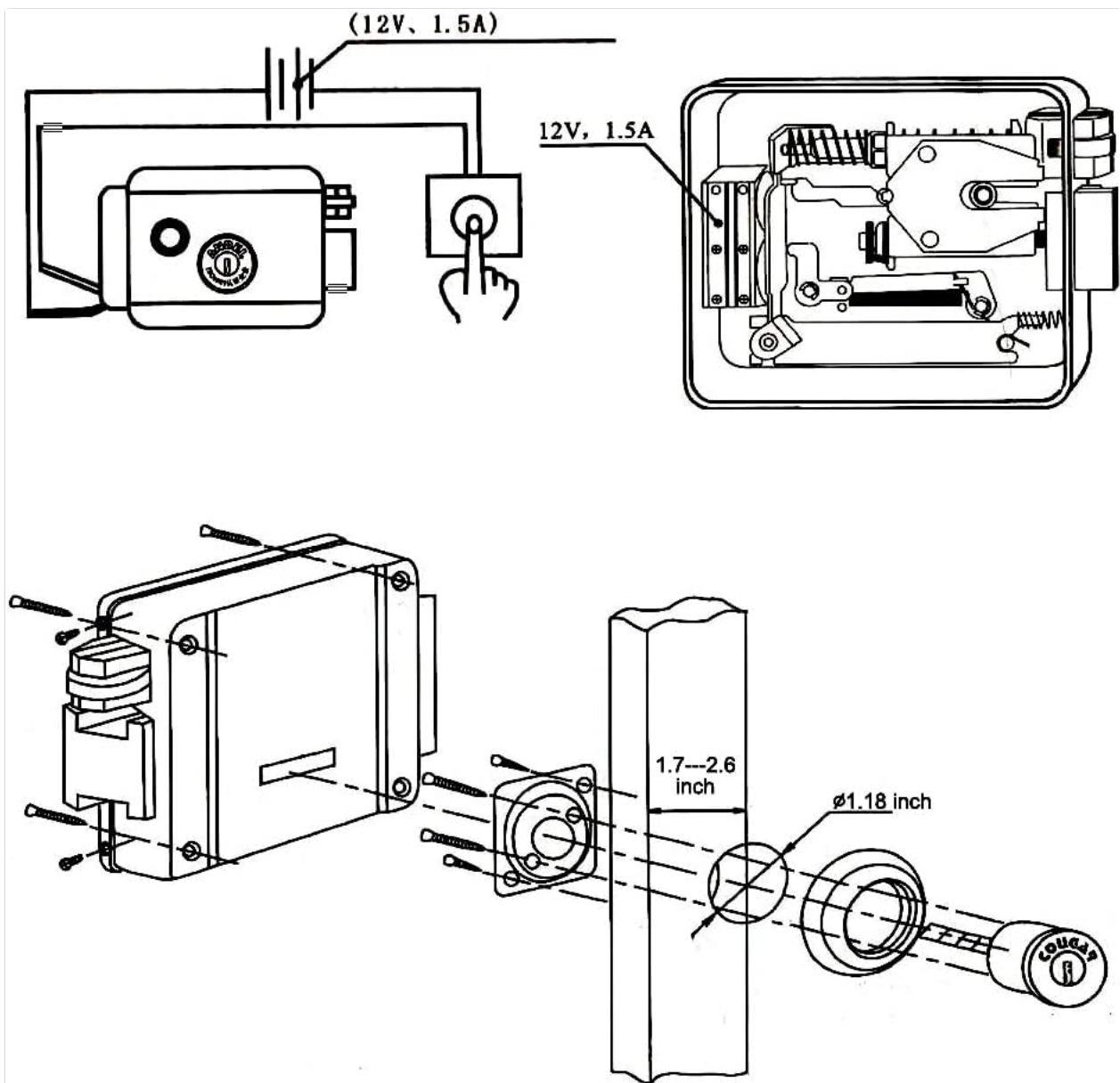


Figure 3: Diagram showing the wiring connections for the 12V power supply and the mechanical installation steps for the lock and cylinder.



Figure 4: The AMOCAM electric lock mounted on a black metal gate, demonstrating its application in a real-world setting.

6. OPERATION

The AMOCAM E-788Lock offers multiple methods for unlocking, providing flexibility and security.

6.1 Mechanical Unlocking

- **From Outside:** Insert one of the provided keys into the outer lock cylinder and turn to unlock.
- **From Inside:** Turn the knob on the inside of the lock body to unlock.

6.2 Electronic Unlocking

- **From Inside:** Press the release button located on the lock body to electronically unlock the door.
- **Via Intercom/Access Control:** If connected to a compatible video intercom or access control system, the lock can be electronically released by pressing the designated unlock button on the indoor monitor or access control device.

Video 1: This video demonstrates the operation of the AMOCAM electronic lock, including opening via an intercom system and manual release. It highlights the secure locking mechanism.

Video 2: This short video showcases the functionality of the AMOCAM E-788Lock, demonstrating how it can be opened electronically from an indoor unit and manually from the outside.

7. MAINTENANCE

Regular maintenance ensures the longevity and reliable performance of your electric lock.

- **Cleaning:** Periodically wipe the lock body with a soft, damp cloth. Avoid abrasive cleaners or solvents that could damage the finish.
- **Lubrication:** Apply a small amount of graphite-based lubricant to the keyway and moving parts of the mechanical mechanism annually to ensure smooth operation.
- **Connection Check:** Occasionally inspect the electrical wiring connections to ensure they are secure and free from corrosion.
- **Functionality Test:** Regularly test both mechanical and electronic unlocking methods to confirm proper operation.

8. TROUBLESHOOTING

If you encounter issues with your AMOCAM E-788Lock, refer to the following common problems and solutions:

- **Lock does not open electronically:**
 - Check the power supply to the lock (DC12V, 1.5A).
 - Verify all electrical connections are secure and correctly wired.
 - Ensure the intercom or access control system is functioning correctly and sending the unlock signal.
- **Lock does not open mechanically with key:**
 - Ensure the correct key is being used.
 - Check for any obstructions in the keyway or the lock mechanism.
 - Apply lubricant to the keyway if it feels stiff.
- **Lock is stiff or difficult to operate:**
 - Lubricate the internal mechanism and keyway.
 - Check for proper alignment of the lock body and strike plate.
- **Lock makes unusual noises:**
 - This may indicate wear or misalignment. Inspect the internal components or consult a technician.





If the problem persists after attempting these troubleshooting steps, please contact AMOCAM customer support.

9. WARRANTY AND SUPPORT

For warranty information, technical support, or service inquiries, please refer to the warranty card included with your product or visit the official AMOCAM website. Ensure you have your product model number (E-788Lock) and purchase details available when contacting support.

© 2023 AMOCAM. All rights reserved.

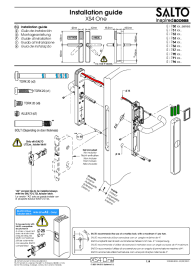
Related Documents - E-788Lock

	<p>Smart Lock K6B-TB User Manual</p> <p>User manual for the Smart Lock K6B-TB, detailing installation, operation, user management, connectivity options (Bluetooth, Wi-Fi via gateway), troubleshooting FAQs, and warranty information. This guide helps users set up and manage their smart lock effectively.</p>
	<p>Salto XS4 One Installation Guide</p> <p>Comprehensive installation guide for the Salto XS4 One electronic lock, detailing setup, compatibility, and features for various models. Includes step-by-step instructions and diagrams.</p>
	<p>SALTO XS4 One Installation Guide for European Mortise Locks</p> <p>Detailed installation instructions for the SALTO XS4 One electronic lock, designed for European mortise locks. Covers parts, dimensions, and step-by-step assembly for secure installation.</p>
	<p>LOCKTON CADELL 52: User Manual for Commercial & Domestic Electronic Lever Lock</p> <p>Explore the LOCKTON CADELL 52 Electronic Lever Lock with this comprehensive user manual. Learn about installation, fingerprint access, digital passcodes, RFID, app control, and more for enhanced commercial and domestic security.</p>



[E-LOCK Wireless E-Lock: Installation Instructions and User Guide](#)

Comprehensive installation instructions and user guide for the E-LOCK Wireless E-Lock, detailing features, technical specifications, setup, operation, and maintenance for smart garage and industrial doors.



[SALTO XS4 One Installation Guide](#)

Comprehensive installation guide for the SALTO XS4 One electronic lock, detailing assembly steps, tool requirements, handling selection, and compatibility information for various SALTO lock series.