

XANLITE PACK2SPSO4

XANLITE Solar LED Spotlights (2-Pack) User Manual

Brand: XANLITE | Model: PACK2SPSO4

1. INTRODUCTION AND OVERVIEW

Thank you for choosing the XANLITE Solar LED Spotlights. This manual provides essential information for the safe and efficient installation, operation, and maintenance of your new solar lights. These spotlights are designed for outdoor use, featuring a durable steel and glass construction, an IP44 rating for splash resistance, and a cool white light (6500 Kelvin) with up to 8 hours of autonomy.

2. SAFETY INFORMATION

- Read all instructions carefully before installation and use.
- Do not attempt to open, disassemble, or modify the product. This may cause damage, void the warranty, and pose safety risks.
- Keep the solar panel clean to ensure optimal charging performance.
- Ensure the product is installed in a location where it will not be damaged by foot traffic, garden tools, or other objects.
- The product is rated IP44, meaning it is protected against splashing water from any direction. It is not designed for submersion in water.
- Dispose of the product and its components responsibly according to local regulations at the end of its lifespan.

3. PACKAGE CONTENTS

Verify that all components are present in the package:

- 2 x XANLITE Solar LED Spotlights

- 4 x Ground Stakes (2 per spotlight)



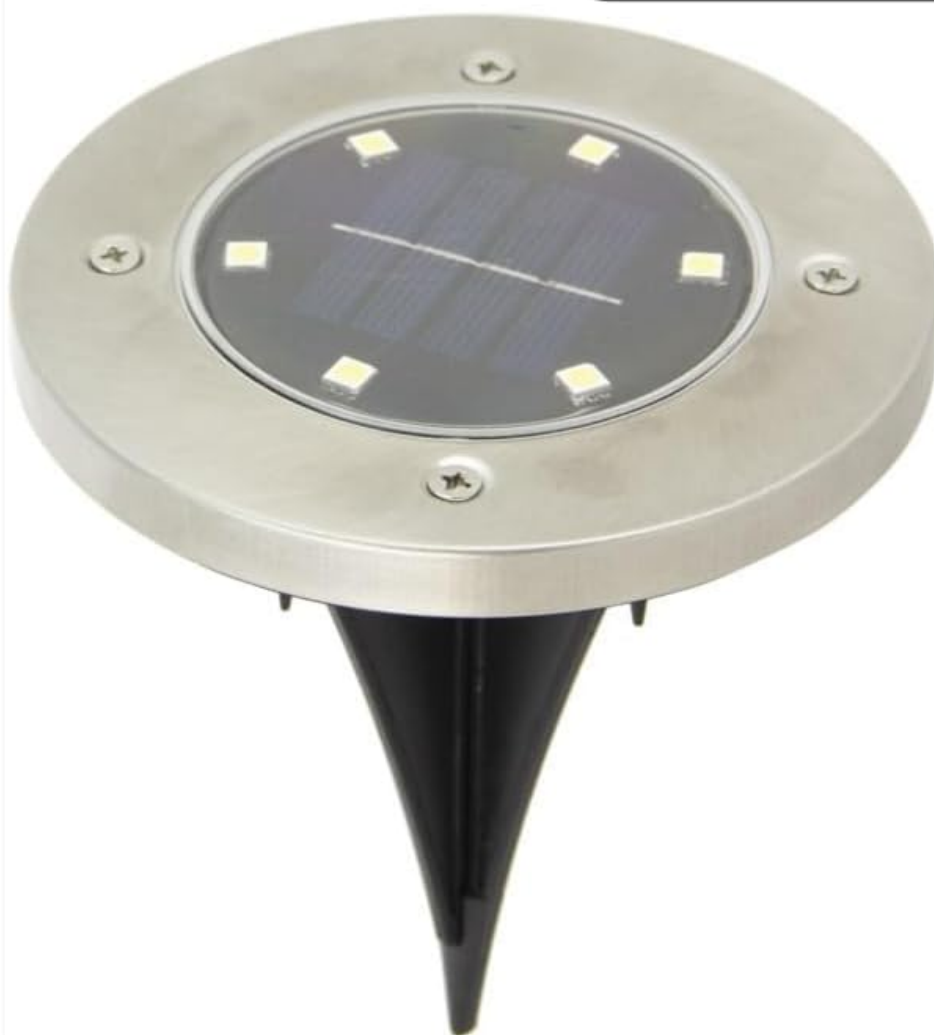
The package contents include two XANLITE solar LED spotlights and four ground stakes, providing two stakes per spotlight for secure installation.

4. SETUP

1. **Unpack:** Carefully remove all components from the packaging.
2. **Assemble Ground Stake:** Attach the ground stakes to the bottom of each solar spotlight. Ensure they are securely fitted.
3. **Select Location:** Choose an outdoor location that receives direct sunlight for at least 6-8 hours daily. Avoid areas shaded by trees, buildings, or other obstructions, as this will reduce charging efficiency and illumination time.
4. **Install:** Gently push the assembled spotlight into soft ground. If the ground is hard, loosen it first to avoid damaging the stake.
5. **Initial Charge:** Before first use, ensure the rocker switch (usually located on the underside or side of the unit) is in the 'ON' position. Allow the spotlights to charge for a full day (6-8 hours) in direct sunlight to ensure the internal battery is fully charged.



**Alimentation à
énergie solaire**



A detailed view of the XANLITE solar LED spotlight, featuring its circular design, central solar panel, LED lights, and the detachable ground stake for easy installation.



This image shows a XANLITE solar LED spotlight discreetly placed within a garden bed, highlighting its low-profile design and how it blends with landscaping.

5. OPERATING INSTRUCTIONS

The XANLITE Solar LED Spotlights are designed for automatic operation:

- Once the initial charge is complete and the switch is in the 'ON' position, the spotlights will automatically turn on at dusk and turn off at dawn.
- The illumination duration depends on the amount of sunlight received during the day. A full charge can provide up to 8 hours of light.



Several XANLITE solar LED spotlights are shown installed along a gravel path, demonstrating their effectiveness in providing ambient lighting for outdoor walkways.

6. MAINTENANCE

- **Clean Solar Panel:** Regularly wipe the solar panel with a soft, damp cloth to remove dust, dirt, leaves, or snow. A clean panel ensures maximum sunlight absorption and charging efficiency.
- **Inspect for Debris:** Periodically check around the spotlight for any debris that might obstruct the solar panel or the light output.
- **Battery:** The internal battery is not user-replaceable. Do not attempt to open the unit to replace the battery.
- **Winter Care:** In regions with prolonged periods of low sunlight or heavy snow, the performance of solar lights may be reduced. Consider storing them indoors during winter months to prolong their lifespan.

7. TROUBLESHOOTING

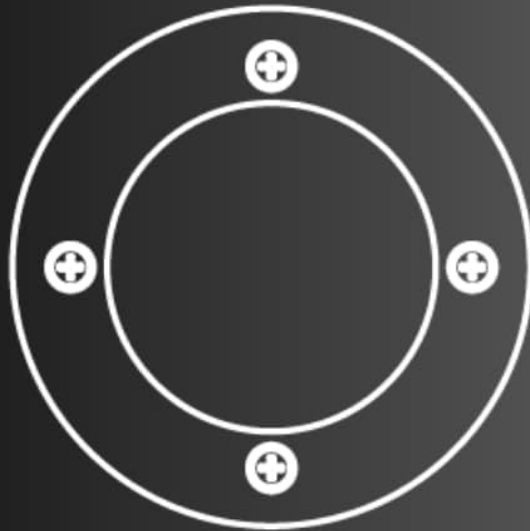
- **Light does not turn on:**

- Ensure the rocker switch is in the 'ON' position.
 - Verify the solar panel is clean and free from obstructions.
 - Confirm the spotlight is placed in a location receiving direct sunlight for sufficient charging.
 - Allow for a full day of charging before expecting operation, especially after initial setup or long periods of storage.
- **Light illuminates for a short period:**
 - The solar panel may not be receiving enough direct sunlight for a full charge. Relocate the spotlight to a sunnier spot.
 - Cloudy weather or shorter daylight hours can reduce charging efficiency.
 - Ensure the solar panel is clean.
 - **Water ingress despite IP44 rating:**
 - Check for any visible damage to the housing or seals that might compromise the IP44 protection.
 - Ensure the product is not submerged or exposed to high-pressure water jets, which exceed the IP44 rating.

8. SPECIFICATIONS

Brand	XANLITE
Model Number	PACK2SPSO4
Dimensions (per spotlight)	Ø 110 mm (Diameter)
Weight (per pack)	260 grams
Material	Steel and Glass (Metal)
Light Source	LED
Color Temperature	6500 Kelvin (Cool White)
Ingress Protection (IP) Rating	IP44 (Splash-proof)
Autonomy	Up to 8 hours (on full charge)
Power Source	Solar Powered
Switch Type	Rocker Switch
Usage	Garden / Outdoor

— Ø110mm —



A technical drawing indicating the precise diameter of the XANLITE solar LED spotlight, which is 110 millimeters.



This graphic highlights key features of the solar spot: IP44 rating for splash resistance, durable metal construction, and an operational autonomy of up to 8 hours on a full charge.

9. WARRANTY INFORMATION

XANLITE products are manufactured to high-quality standards. For specific warranty terms and conditions, please refer to the documentation provided at the time of purchase or contact your retailer. Keep your proof of purchase for any warranty claims.

10. SUPPORT

If you encounter any issues or have questions not covered in this manual, please contact the retailer where you purchased the product or visit the official XANLITE website for customer support information.

