

Madesa Agata 01

Madesa Agata 01 Corner Integrated Kitchen Cabinet 150cm - White

Model: Agata 01 | Brand: Madesa

INTRODUCTION

This manual provides detailed instructions for the assembly, operation, and maintenance of your Madesa Agata 01 Corner Integrated Kitchen Cabinet. Madesa is recognized for its commitment to quality, service, and innovation in the furniture market. Please read these instructions carefully before beginning assembly or use to ensure proper installation and longevity of your product.

PRODUCT FEATURES

- **Modern and Functional Design:** The Agata 01 kitchen cabinet offers a functional and modern design with ample storage space.
- **High-Quality Materials:** Constructed from high-quality medium-density particleboard, ensuring durability and a refined finish.
- **Easy Assembly:** Designed for straightforward assembly, allowing you to set up your kitchen in a short time. Includes all necessary hardware and a detailed assembly manual.
- **Ecological and Durable Finish:** Features polyester paint with 7 protective layers. This ecological method enhances durability and preserves the furniture's appearance over time. All wood used originates from renewable forests.
- **Enhanced Functionality:** Equipped with aluminum handle pulls, drawers featuring full-extension telescopic slides for smooth operation, doors with soft-close dampers, and gas pistons on tilt-up doors for convenience.

COMPONENTS OVERVIEW

Familiarize yourself with the various components and their features:

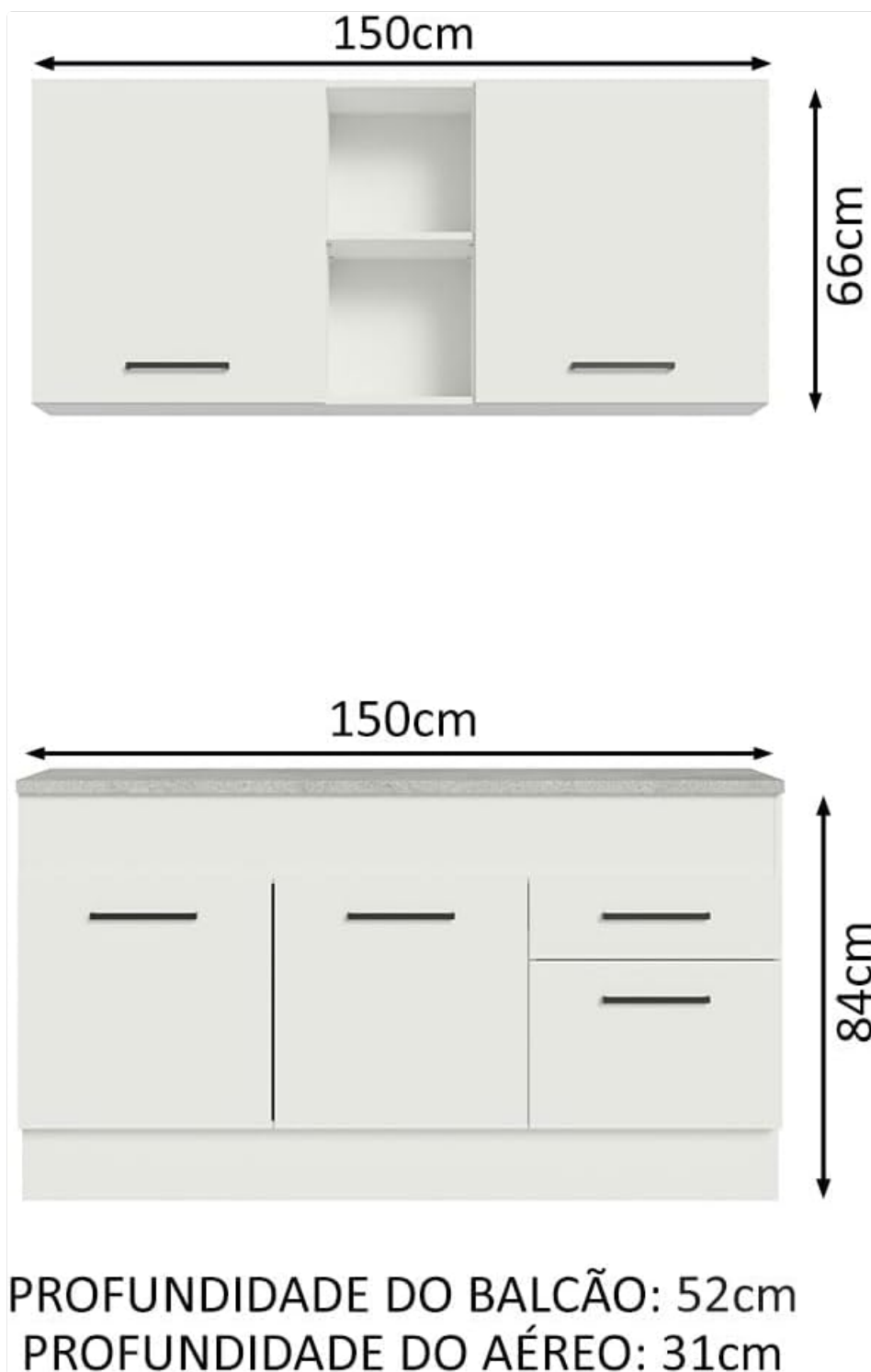


Image 1: Overall dimensions of the Madesa Agata 01 kitchen cabinet, indicating the width and height of both upper and lower sections, along with depth measurements for the counter and aerial units.



Image 2: A complete view of the assembled Madesa Agata 01 kitchen cabinet, showcasing its modern aesthetic and how it integrates into a kitchen environment with various appliances and decor.

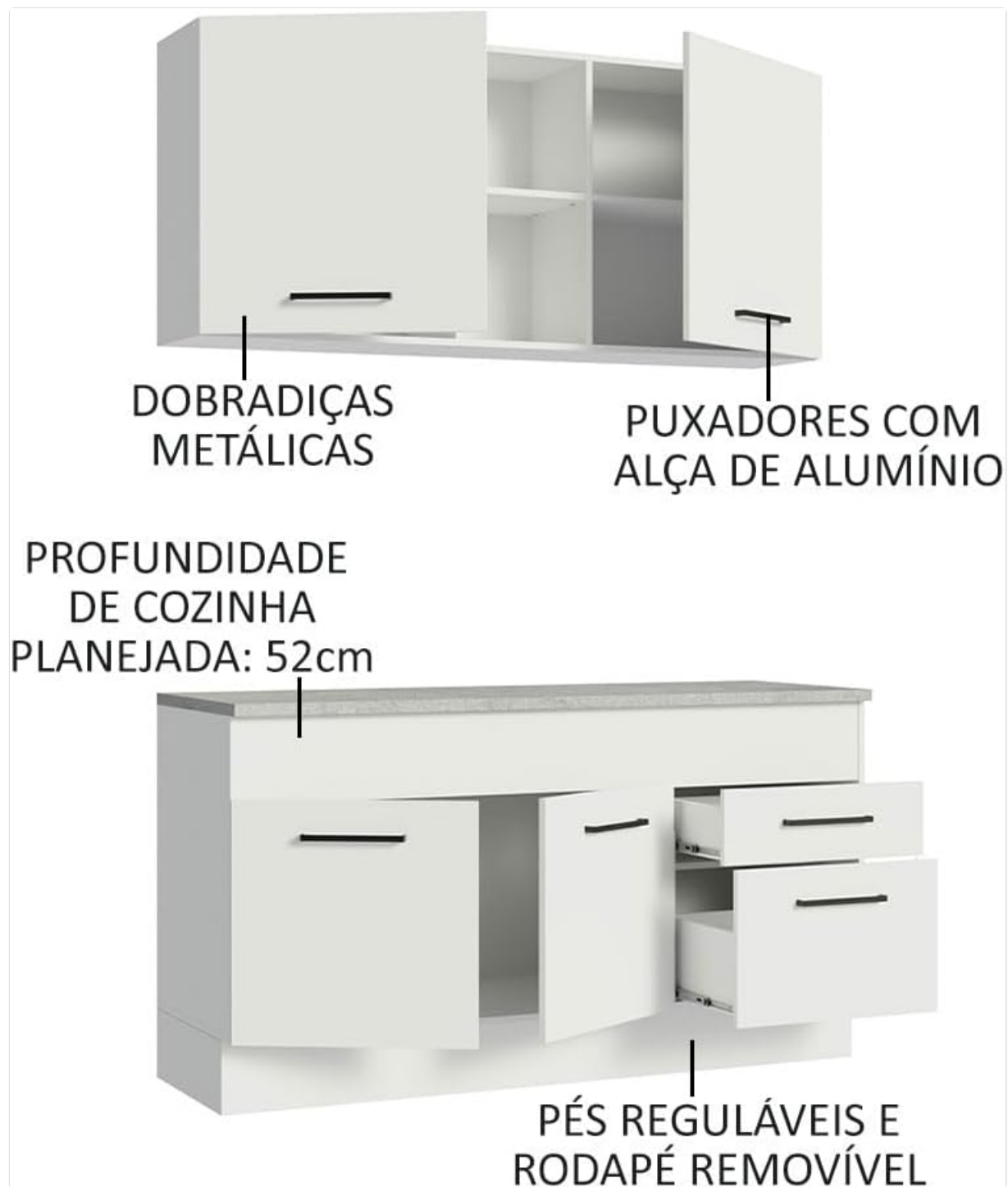


Image 3: Close-up details of the cabinet's construction, including metallic hinges for durability, elegant aluminum handle pulls, and the specified depth of the kitchen unit. It also illustrates the adjustable feet and removable plinth.



ALTURA MODELO
FEMININO: 165cm

ALTURA DA
COZINHA: 210cm

Image 4: An illustration demonstrating the internal storage layout and overall height of the kitchen cabinet. A 165cm tall model is included for visual scale, indicating a total kitchen height of 210cm.

Puxadores
elegantes na
cor preta com
alça de
alumínio

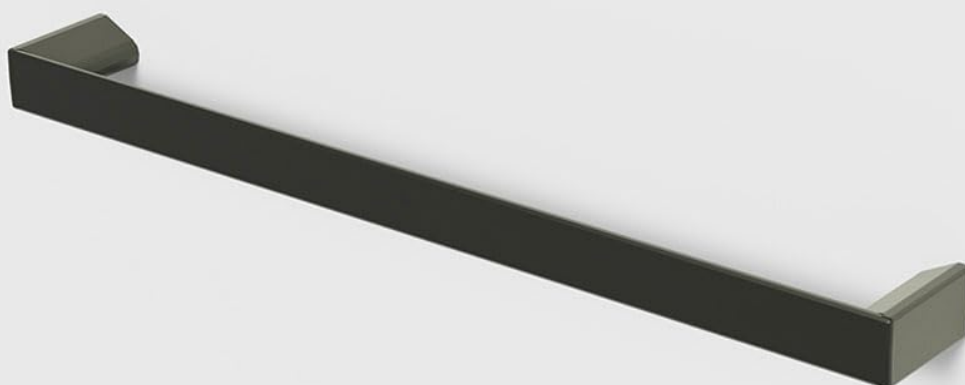


Image 5: A detailed view of the elegant black aluminum handle pull, emphasizing its design and finish on the white cabinet door.

Gavetas
amplas com
**corrediças
telescópicas**



Image 6: This image displays an open drawer, highlighting its ample storage capacity and the smooth, full-extension telescopic slides that allow for complete access to the drawer's contents.



Image 7: An open drawer is shown, equipped with a complimentary cutlery tray, designed to keep your kitchen utensils neatly organized and easily accessible.

Rodapés removíveis e pés reguláveis



Image 8: This diagram illustrates the adjustable feet and removable plinths, which allow for easy leveling of the cabinet on uneven surfaces and simplify the installation process.

ASSEMBLY AND SETUP

The Madesa Agata 01 kitchen cabinet requires assembly. Please follow the included assembly manual for detailed, step-by-step instructions. All necessary hardware is provided.

- 1. Unpack Components:** Carefully unpack all parts and verify against the parts list in the assembly manual. Ensure no components are missing or damaged.
- 2. Prepare Workspace:** Choose a clean, flat, and spacious area for assembly. Lay down a blanket or cardboard to protect the furniture pieces and your floor.
- 3. Follow Manual Instructions:** Adhere strictly to the sequence and instructions provided in the dedicated assembly manual. Pay close attention to diagrams and hardware usage.
- 4. Install Adjustable Feet:** Attach the adjustable feet to the base cabinets as instructed. These allow for leveling the cabinet on uneven floors.
- 5. Mount Cabinets:** Securely mount upper cabinets to the wall and position lower cabinets. Ensure all connections are tight and stable.
- 6. Install Doors and Drawers:** Attach doors with soft-close dampers and install drawers with telescopic

slides. Adjust hinges for proper alignment.

For visual guidance on general Madesa kitchen features and assembly, please refer to the video below:

Your browser does not support the video tag.

Video 1: This video demonstrates various features and components common to Madesa kitchen cabinets, including sophisticated design elements, oven cabinet integration, base cabinets with doors, aluminum handles, glass upper cabinets, and tilt-up doors. While showcasing a different model (Cocina Topazio), the general functionality and quality are representative of Madesa products.

OPERATING INSTRUCTIONS

The Madesa Agata 01 kitchen cabinet is designed for intuitive use. Here are some general operating guidelines:

- **Doors:** Gently open and close cabinet doors. The integrated soft-close dampers ensure a quiet and smooth closing action, preventing slamming.
- **Drawers:** Pull drawers open using the aluminum handles. The full-extension telescopic slides allow the drawers to extend completely, providing full access to contents. Push gently to close.
- **Tilt-Up Doors:** For cabinets with tilt-up doors, use the handle to pull the door upwards. The gas piston mechanism will assist in holding the door open. To close, gently pull the door down until it latches.
- **Adjustable Feet:** If the cabinet appears uneven, the adjustable feet can be rotated to raise or lower specific corners. This should be done during initial setup.

MAINTENANCE

Proper care and maintenance will extend the life and preserve the appearance of your Madesa Agata 01 kitchen cabinet:

- **Cleaning:** Wipe surfaces with a soft, damp cloth. For stubborn stains, use a mild, non-abrasive cleaner specifically designed for furniture. Avoid harsh chemicals, abrasive pads, or solvents, as these can damage the polyester finish.
- **Spills:** Immediately wipe up any spills, especially liquids, to prevent moisture absorption and potential damage to the engineered wood.
- **Heat and Moisture:** Avoid placing hot items directly on surfaces without protection. Protect the cabinet from excessive moisture and steam, especially around sinks and cooking areas.
- **Hardware:** Periodically check all screws, hinges, and slides to ensure they are tight. Tighten any loose hardware to maintain stability and functionality.
- **Sunlight:** Prolonged exposure to direct sunlight can cause fading. Consider using blinds or curtains to protect the cabinet from intense UV rays.

TROUBLESHOOTING

Here are solutions to common issues you might encounter:

Problem	Possible Cause	Solution
---------	----------------	----------

Problem	Possible Cause	Solution
Cabinet doors are misaligned or do not close properly.	Loose hinges or improper hinge adjustment.	Tighten hinge screws. Adjust hinge screws to align the door. Refer to the assembly manual for specific hinge adjustment instructions.
Drawers are difficult to open or close.	Debris in slides, loose slide screws, or overloaded drawer.	Clean the telescopic slides. Tighten screws securing the slides to the cabinet and drawer. Reduce the weight in the drawer.
Cabinet feels wobbly or unstable.	Uneven floor or loose assembly connections.	Adjust the cabinet's feet to level it on the floor. Ensure all assembly screws are tightened securely.
Surface scratches or minor damage.	Accidental impact or abrasive cleaning.	For minor scratches, use a furniture repair pen or touch-up kit matching the cabinet's finish. Avoid abrasive cleaning methods.

SPECIFICATIONS

- **Brand:** Madesa
- **Model:** Agata 01
- **Color:** White
- **Material:** Engineered Wood
- **Package Dimensions:** 169.5 x 101 x 62 cm
- **Product Weight:** 91.8 kg
- **Mounting Type:** Floor Mount
- **Special Features:** Aluminum handle pulls, Drawers with full-extension telescopic slides, Doors with soft-close dampers, Gas piston on tilt-up doors.

WARRANTY AND SUPPORT

Madesa stands by the quality of its products. For information regarding warranty coverage, claims, or technical support, please refer to the warranty documentation included with your purchase or contact Madesa customer service. Ensure you retain your proof of purchase for any warranty-related inquiries.

For additional assistance or to explore other Madesa products, you may visit the official Madesa brand store or website.