

## MACGQ MAGQ-89

# MACGQ Small Pulley Block Instruction Manual

Model: MAGQ-89

## 1. INTRODUCTION

---

Thank you for choosing the MACGQ Small Pulley Block. This manual provides essential information for the safe and effective installation, operation, and maintenance of your pulley blocks. Please read these instructions carefully before use and retain them for future reference.

## 2. PRODUCT OVERVIEW

---

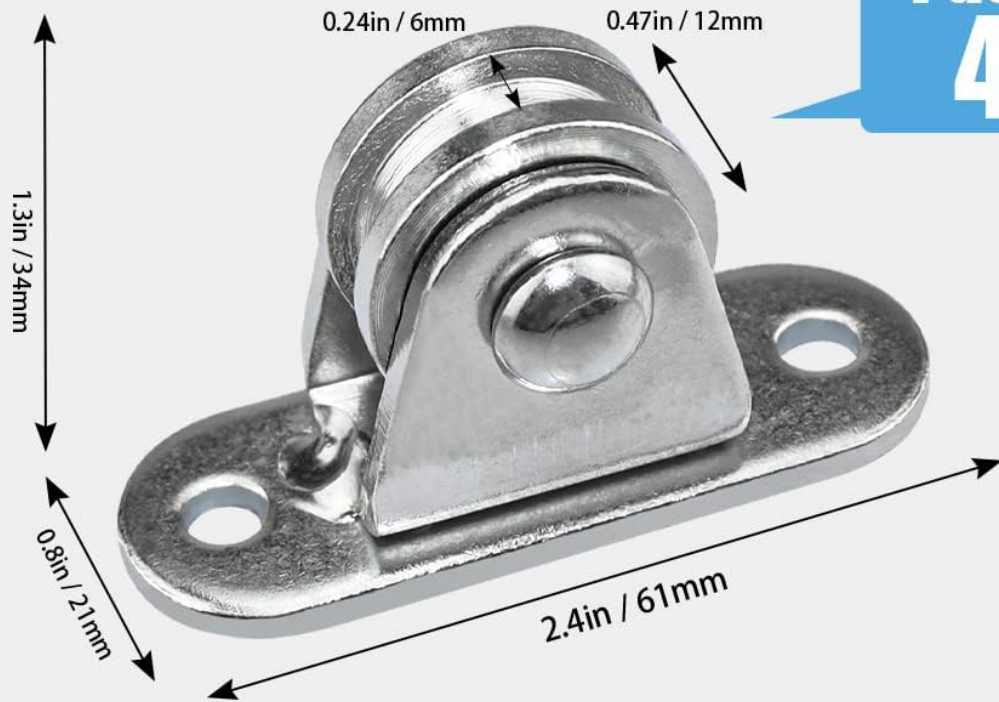
The MACGQ Small Pulley Block is designed for various material handling and DIY projects, offering a silent and heavy-duty solution for lifting and guiding cords. It features a fixed design for secure wall or ceiling mounting.

### Key Features:

- **Quality Construction:** Made from carbon steel with a nickel-plated surface for durability and stability.
- **Silent Operation:** Designed for smooth, silent sliding, preventing rope twisting.
- **High Load Capacity:** Each pulley block supports up to 176 pounds (80 kg).
- **Easy Installation:** Includes screws and expansion pipes for quick setup.
- **Versatile Application:** Suitable for industrial and household material handling, electric rolling doors, and ceiling pulleys.



*Image: Four MACGQ small pulley blocks, each featuring a silent wheel and a fixed base for wall or ceiling mounting. Eight yellow expansion pipes are also shown, indicating the included installation hardware.*



### Package included:

Screws × 8

Expansion Pipes × 8



× 8



× 8

Image: This diagram illustrates the key dimensions of the pulley block, including its length (61mm), width (21mm), and height (34mm). It also clearly lists the package contents: 8 screws and 8 expansion pipes.

### 3. SPECIFICATIONS

Specification	Value
Material	Carbon Steel
Surface Treatment	Nickel Plated
Product Size (L×W×H)	61 × 21 × 34 mm (2.4 × 0.8 × 1.3 inches)
Thickness	3 mm (1/8 inch)
Wheel Diameter	25 mm (1 inch)
Groove Width	6 mm (1/4 inch)
Suitable Rope Diameter	< 6 mm

Specification	Value
Max Bearing Capacity (single)	176 lb (80 kg)
Installation Hole Diameter	5.8 mm (0.23 inch)
Item Model Number	MAGQ-89
Package Weight	0.41 Kilograms



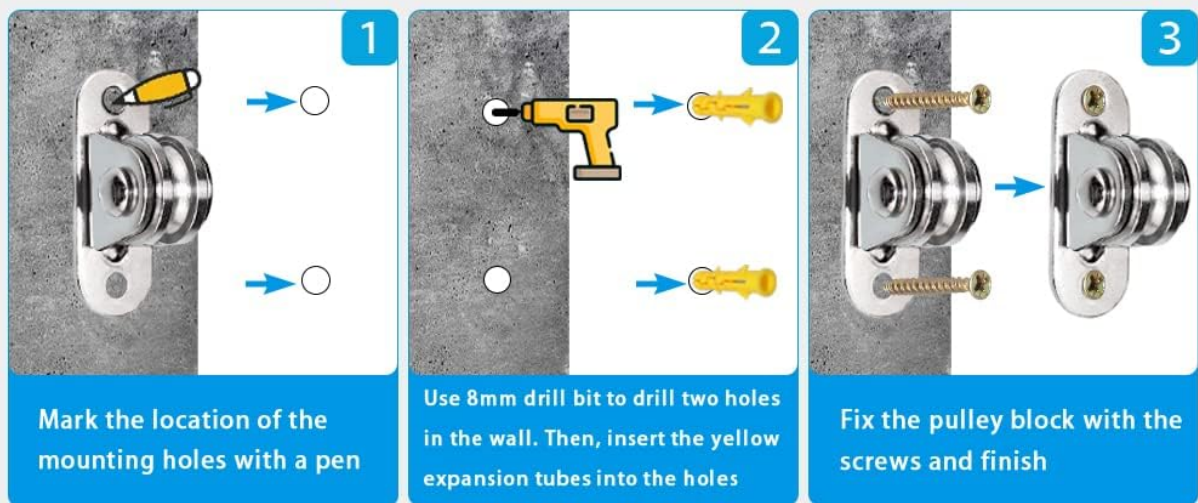
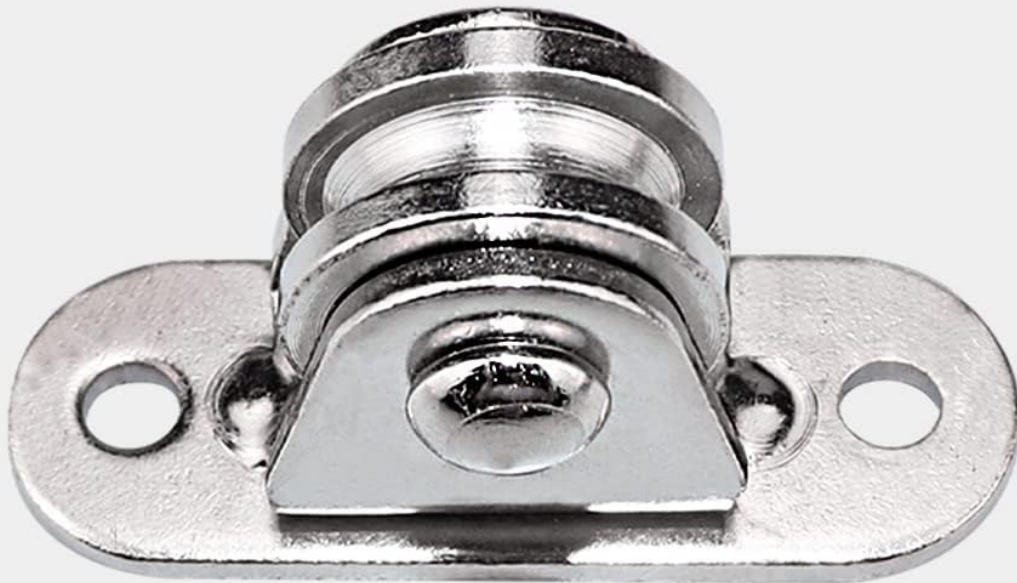
*Image: This image provides a detailed breakdown of the pulley block's technical specifications, including its overall size (61x21x34mm), thickness (3mm), wheel diameter (25mm or 1 inch), and groove width (6mm or 1/4 inch). It also highlights the 5.8mm installation hole diameter.*

## 4. SAFETY INSTRUCTIONS

**WARNING: Failure to follow these safety instructions may result in injury or property damage.**

- Always ensure the pulley block is securely mounted to a stable surface (wall or ceiling) capable of supporting the intended load.

- Do not exceed the maximum load-bearing capacity of 176 lb (80 kg) per pulley block. Overloading can cause failure and injury.
- Use ropes with a diameter less than 6mm to ensure proper fit and function within the pulley groove.
- Regularly inspect the pulley block, rope, and mounting hardware for signs of wear, damage, or corrosion before each use. Replace any damaged components immediately.
- Keep hands and loose clothing clear of moving parts during operation.
- Ensure the load is balanced and controlled during lifting or moving operations.
- This product is not intended for human suspension or critical safety applications where failure could result in severe injury or death.



*Image: This image emphasizes the robust design of the MACGQ pulley block by prominently displaying its maximum load-bearing capacity of 176 pounds (80 kg).*

## 5. SETUP AND INSTALLATION

Follow these steps for secure installation of the MACGQ Small Pulley Block:

1. **Select Mounting Location:** Choose a sturdy wall or ceiling surface that can safely support the maximum intended load. Ensure there are no hidden electrical wires or pipes in the drilling area.

2. **Mark Drilling Points:** Place the pulley block against the desired mounting surface. Use a pen or marker to accurately mark the locations for the two mounting holes.
3. **Drill Holes:** Using an 8mm drill bit, carefully drill two holes at the marked locations. The depth of the holes should be sufficient to fully accommodate the expansion pipes.
4. **Insert Expansion Pipes:** Insert the yellow expansion pipes into the drilled holes. Tap them gently with a hammer if necessary until they are flush with the surface.
5. **Mount Pulley Block:** Align the pulley block's mounting holes with the inserted expansion pipes. Insert the provided screws through the pulley block and into the expansion pipes. Tighten the screws firmly until the pulley block is securely fastened to the surface. Do not overtighten.



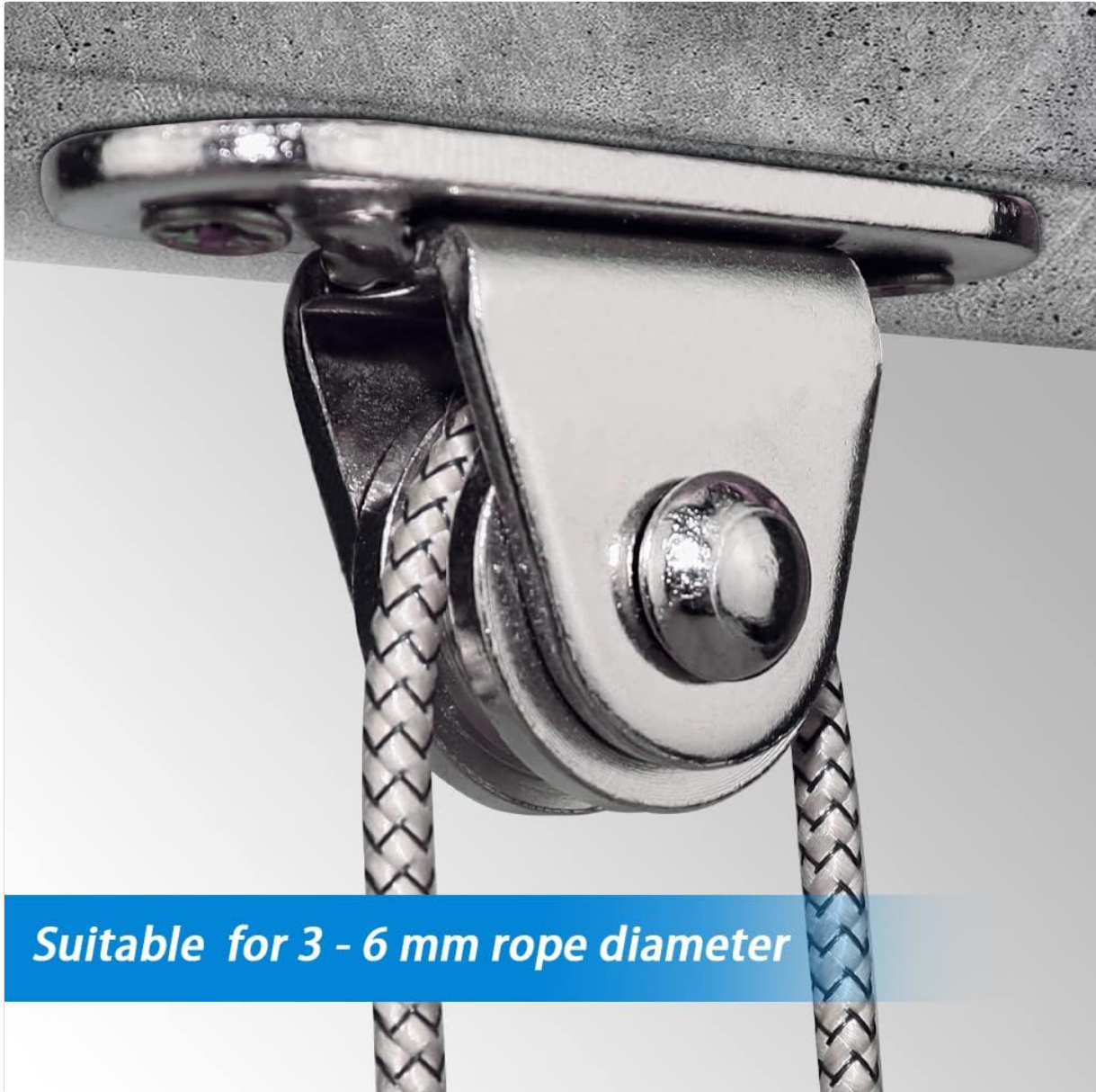
*Image: This visual guide illustrates the three simple steps for installing the pulley block: 1. Mark mounting holes, 2. Drill holes and insert expansion pipes, 3. Fix the pulley block with screws.*

## 6. OPERATION

Once the pulley block is securely installed, follow these steps for operation:

1. **Select Rope:** Choose a rope with a diameter less than 6mm that is appropriate for your intended load and application. Ensure the rope is in good condition, free from fraying or damage.

2. **Thread Rope:** Carefully thread the rope through the groove of the pulley wheel. Ensure the rope sits properly within the groove and moves freely.
3. **Attach Load:** Securely attach your load to one end of the rope. Ensure the attachment method is strong enough to hold the load.
4. **Operate:** Apply force to the other end of the rope to lift or move the load. Maintain control of the rope and load at all times.



*Image: The image shows the MACGQ pulley block with a rope threaded through its wheel, demonstrating its function. It highlights that the pulley is suitable for ropes with a diameter between 3mm and 6mm.*

## 7. MAINTENANCE

Regular maintenance will extend the lifespan and ensure the safe operation of your pulley block:

- **Inspection:** Periodically inspect the pulley wheel for smooth rotation, and check the housing and mounting plate for any signs of bending, cracks, or corrosion.
- **Cleaning:** Keep the pulley wheel and groove free from dirt, dust, and debris that could impede smooth operation. Wipe with a clean, dry cloth.
- **Lubrication:** While the pulley is designed for silent operation, a small amount of lubricant applied to

the wheel's axle can help maintain smooth movement, especially if used in outdoor or dusty environments.

- **Mounting Check:** Ensure all mounting screws remain tight. Retighten if any looseness is detected.

## 8. TROUBLESHOOTING

---

If you encounter issues with your pulley block, consider the following:

- **Pulley not moving smoothly:** Check for debris in the wheel groove. Ensure the rope diameter is appropriate (<6mm). Inspect the wheel for damage or excessive wear. Consider applying a small amount of lubricant.
- **Squeaking noise:** This may indicate a need for lubrication on the wheel's axle.
- **Pulley feels loose after installation:** Re-check the tightness of the mounting screws. Ensure the expansion pipes are fully seated and the mounting surface is solid.
- **Rope fraying:** Ensure the rope is correctly seated in the pulley groove and not rubbing against the housing. Inspect the pulley groove for any sharp edges or damage.

## 9. WARRANTY AND SUPPORT

---

For any questions, concerns, or support regarding your MACGQ Small Pulley Block, please contact the manufacturer or your point of purchase. Please have your model number (MAGQ-89) available when contacting support.