

Renimer IT100

Renimer IT100 Wireless Earbuds User Manual

Model: IT100

1. INTRODUCTION

Thank you for choosing the Renimer IT100 Wireless Earbuds. These earbuds are designed to provide a superior audio experience with advanced Bluetooth 5.2 technology, Hi-Fi stereo sound, and a comfortable, waterproof design. This manual will guide you through the setup, operation, and maintenance of your new earbuds to ensure optimal performance and longevity.

2. PACKAGE CONTENTS

Please check the package for the following items:

- Renimer IT100 Wireless Earbuds (Left and Right)
- Charging Case
- USB Type-C Charging Cable
- Ear Tips (S/M/L sizes)
- User Manual (this document)

3. PRODUCT OVERVIEW

Familiarize yourself with the components of your Renimer IT100 Wireless Earbuds.

Bluetooth 5.2 Technology

Compared with Bluetooth 5.1, more stable connection, 0.7X power consumption, 0.05S low-latency and 2X transmission speed.



Figure 3.1: Renimer IT100 Wireless Earbuds and Charging Case. This image displays the earbuds nestled within their compact charging case, highlighting their sleek design and portability.

SUPER LIGHT-WEIGHT

Tiny body but powerful energy



Figure 3.2: Super Lightweight Design. This image illustrates the individual earbud weighing 4.1g and the charging case weighing 38.6g, emphasizing their minimal weight for comfortable wear and portability.

4. SETUP

4.1 Charging the Earbuds and Case

Before first use, fully charge the earbuds and charging case.

1. Place the earbuds into the charging case. Ensure they are correctly seated; the indicator lights on the earbuds will illuminate to show charging status.
2. Connect the USB Type-C charging cable to the charging port on the case and plug the other end into a USB power adapter (not included) or a computer's USB port.
3. The charging case indicator lights will show the charging progress. A full charge for the case typically takes about 1.5 hours.
4. Once fully charged, disconnect the charging cable. The earbuds will charge automatically when placed in the case, providing up to 40 hours of total playtime with multiple recharges from the case.

SMART TOUCH CONTROL

With the highly sensitive touch sensor, no more pressure during touch control.

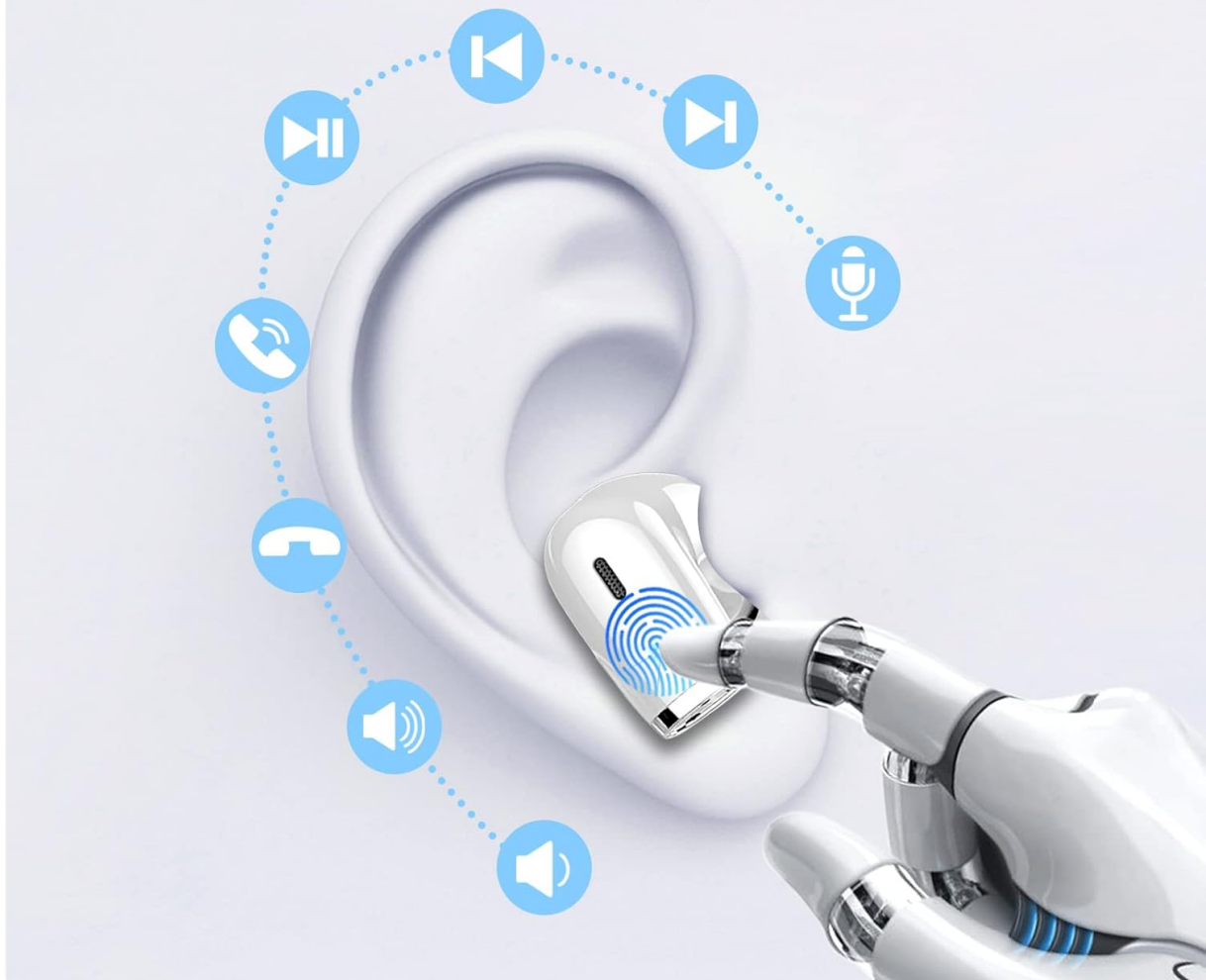


Figure 4.1: Earbuds in Charging Case. This image shows the earbuds placed inside the charging case, illustrating how they are stored and charged.

4.2 Pairing with Your Device

The Renimer IT100 earbuds utilize Bluetooth 5.2 for a stable and efficient connection.

1. **Automatic Power On:** Open the charging case, and the earbuds will automatically power on and enter pairing mode. The indicator light on one earbud will flash, indicating it is ready to pair.
2. **Activate Bluetooth:** On your mobile device (smartphone, tablet, etc.), go to the Bluetooth settings and turn on Bluetooth.
3. **Select Device:** Look for "Renimer IT100" (or similar) in the list of available Bluetooth devices and select it to connect.
4. **Connection Confirmation:** Once successfully paired, you will hear an audible confirmation, and the earbud indicator lights will turn off or flash slowly.
5. **Reconnect:** After the initial pairing, the earbuds will automatically connect to the last paired device when removed from the charging case, provided Bluetooth is enabled on your device.



Figure 4.2: Bluetooth 5.2 Technology. This diagram illustrates the advanced Bluetooth 5.2 chip within the earbud, highlighting its stable connection, low latency, and efficient power consumption.

5. OPERATING INSTRUCTIONS

The Renimer IT100 earbuds feature smart touch controls for easy management of music, calls, and voice assistants.

IP7 WATERPROOF



Light rain



Accident splashes



Sweat



Figure 5.1: Smart Touch Control. This image displays a diagram of an earbud in an ear, with various touch gestures and their corresponding functions for music, calls, and voice assistant.

5.1 Music Control

- **Play/Pause:** Single tap on either earbud.
- **Next Track:** Double tap the right earbud.
- **Previous Track:** Double tap the left earbud.
- **Volume Up:** Triple tap the right earbud.
- **Volume Down:** Triple tap the left earbud.

5.2 Call Control

- **Answer/End Call:** Single tap on either earbud during an incoming call or active call.
- **Reject Call:** Press and hold either earbud for 2 seconds during an incoming call.

5.3 Voice Assistant

- **Activate Voice Assistant (Siri/Google Assistant):** Press and hold either earbud for 3 seconds.

6. MAINTENANCE

6.1 Cleaning

To maintain optimal sound quality and hygiene:

- Regularly clean the earbuds, especially the ear tips and speaker mesh, with a soft, dry, lint-free cloth.
- Do not use harsh chemicals, cleaning solvents, or strong detergents.
- Ensure no moisture enters the speaker openings.

6.2 Water Resistance (IP7)

The Renimer IT100 earbuds are rated IP7 waterproof, meaning they are protected against the effects of temporary immersion in water (up to 1 meter for 30 minutes). This makes them suitable for:

- Light rain
- Accidental splashes
- Sweat during sports and exercise

Important: While IP7 rated, it is recommended to wipe the earbuds dry immediately after contact with water to prevent any potential long-term damage and ensure proper function. The charging case is not waterproof.



HI-FI STEREO SOUND

13 mm high frequency driver rich treble and powerful bass

Figure 6.1: IP7 Waterproof. This image visually represents the IP7 waterproof capabilities of the earbuds, showing them submerged in water with icons for light rain, accidental splashes, and sweat.

6.3 Storage

When not in use, store the earbuds in their charging case to protect them from dust, damage, and to keep them

charged.

7. TROUBLESHOOTING

If you encounter any issues with your Renimer IT100 earbuds, please refer to the following common solutions:

Problem	Solution
Earbuds not pairing with device	<ul style="list-style-type: none">• Ensure earbuds are charged and removed from the case.• Turn off and on Bluetooth on your device.• Forget/delete "Renimer IT100" from your device's Bluetooth list and try pairing again.• Ensure earbuds are within range (10 meters) of your device.
Only one earbud is working	<ul style="list-style-type: none">• Place both earbuds back into the charging case, close the lid, then open it again and remove them simultaneously.• Ensure both earbuds are charged.• Reset the earbuds (refer to manufacturer's website for specific reset instructions if needed).
Low volume or poor sound quality	<ul style="list-style-type: none">• Adjust the volume on both your device and the earbuds.• Ensure ear tips are properly sealed in your ear canal. Try different sized ear tips.• Clean any debris from the speaker mesh.• Ensure there are no obstructions between the earbuds and your device.
Earbuds not charging	<ul style="list-style-type: none">• Ensure the charging cable is securely connected to both the case and the power source.• Check if the charging case itself has power.• Clean the charging contacts on both the earbuds and inside the case.• Try a different USB cable or power adapter.
Touch controls are too sensitive or unresponsive	<ul style="list-style-type: none">• Ensure your fingers are clean and dry when using touch controls.• Practice the touch gestures to ensure correct execution.• If overly sensitive, be mindful of accidental touches, especially when adjusting the earbuds.

8. SPECIFICATIONS

Model Number	IT100
Bluetooth Version	5.2
Speaker Size	13mm high-efficiency speakers

Playtime (Earbuds)	7-8 hours (at 60% volume)
Total Playtime (with Charging Case)	Up to 40 hours
Charging Time (Case)	Approx. 1.5 hours (via Type-C)
Waterproof Rating	IP7 (Earbuds only)
Noise Control	CVC 8.0 for calls, Passive Noise Isolation for music
Control Method	Smart Touch Control
Single Earbud Weight	4.1g
Charging Case Weight	47g
Compatible Devices	iOS 9.0/Android 5.0 or above and Bluetooth 4.0 or later

9. WARRANTY AND SUPPORT

Renimer products are designed and manufactured to the highest quality standards. For warranty information, technical support, or customer service inquiries, please refer to the contact information provided with your purchase or visit the official Renimer website. Please retain your proof of purchase for warranty claims.