

MIAOKE GZJ-5

Miaoke Portable Blender Model GZJ-5 User Manual

1. INTRODUCTION

The Miaoke Portable Blender Model GZJ-5 is designed for convenient preparation of fresh juices, smoothies, and baby food. Its compact size and USB-rechargeable battery make it ideal for home, office, or outdoor use. Constructed from food-grade, non-toxic PCTG material, this blender is BPA-free and features a powerful 6-blade system and a magnetic safety sensor for secure operation.



Image 1.1: Miaoke Portable Blender with fresh fruits and a cleaning brush.

2. PRODUCT COMPONENTS

The Miaoke Portable Blender consists of several key components designed for ease of use and safety. Familiarize yourself with each part before operation.



Image 2.1: Exploded view showing the individual components of the blender.

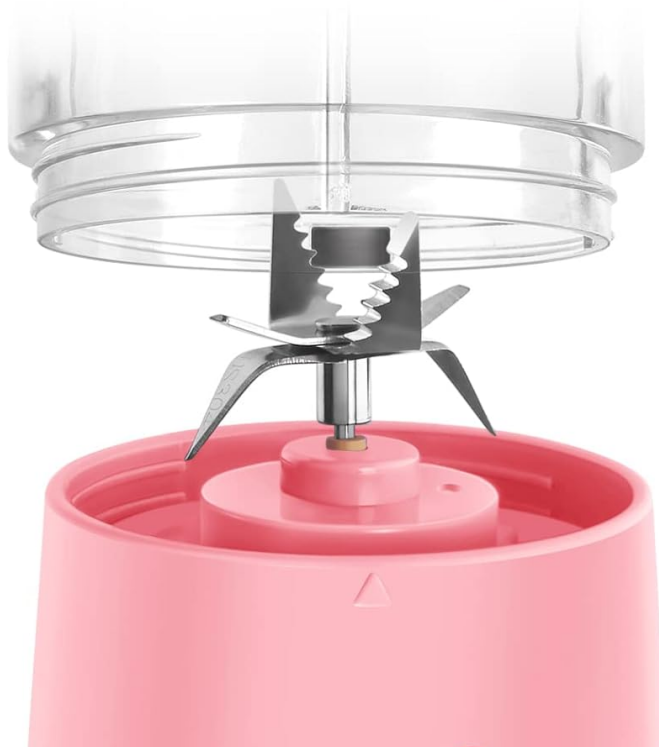
- **Portable Sling Rope:** For easy carrying.
- **Food Grade PP Lid:** Securely seals the cup.
- **Smooth Cup Mouth:** Designed for comfortable drinking.
- **Borosilicate Glass Cup:** Durable and food-grade material for blending.
- **Stainless Steel Blades:** Six 304 stainless steel blades for efficient blending.
- **Indicator Light:** Displays operational and charging status.
- **USB Charging Port:** For recharging the internal battery.
- **Motor Base:** Contains the pure copper motor and control electronics.

3. SETUP

3.1 Initial Charge

Before first use, fully charge the blender. Connect the USB charging cable to the blender's charging port and a compatible USB power source (e.g., car charger, power bank, laptop, or wall adapter). The indicator light will illuminate during charging and change color or turn off when fully charged.

Fully charged to play 12 times



Portable use, detachable and easy to clean suitable for cars, offices, outdoor activities, gym, school use enjoy a healthy life at any time.

Image 3.1: The blender can be charged via car charger, power bank, laptop, or wall adapter.

3.2 Assembly

Ensure the blending cup is securely twisted onto the motor base. The magnetic safety sensor requires proper alignment for the blender to operate. A click or firm seating indicates correct assembly.

4. OPERATING INSTRUCTIONS

4.1 Preparing Ingredients

Cut fruits and vegetables into small pieces (approximately 1-inch cubes) to ensure optimal blending. Do not overfill the cup; leave some space for liquid and blending action.

4.2 Blending Process

1. Add prepared ingredients to the blending cup.
2. Pour in an appropriate amount of liquid (water, milk, etc.). Do not exceed 80% of the cup's capacity.
3. Securely attach the lid.
4. Double-press the power button on the motor base to start blending. The blender will run for

approximately 30-45 seconds per cycle.

5. For thicker mixtures, gently shake the blender during operation to ensure all ingredients come into contact with the blades.
6. To stop blending, press the power button once.



Image 4.1: Double-press the power button to start blending.

Pure Copper Motor

22,000 RPM

High Efficiency Big Power

Upgraded 304 Stainless Steel Cutter Head

Feels More Delicate



Image 4.2: The powerful six-blade system blends ingredients efficiently.

4.3 Safety Features

The blender is equipped with a magnetic safety sensor. It will only operate when the cup is correctly aligned and securely attached to the motor base. If the cup is separated from the base, the blender will not start or will stop automatically, preventing accidental operation.

Fingertip Cuisine



Image 4.3: The blender can be used to prepare various beverages and foods.

5. CLEANING AND MAINTENANCE

5.1 Cleaning the Blender

After each use, rinse the cup and blades immediately. For thorough cleaning, add a small amount of water and a drop of dish soap to the cup, then double-press the power button to run a short blending cycle. Rinse thoroughly. The motor base should be wiped clean with a damp cloth; **do not immerse it in water**. The cup and lid are detachable for easy cleaning. A cleaning brush is included for convenience.

6. TROUBLESHOOTING

If you encounter any issues with your MiaoKe Portable Blender, please refer to the following common

problems and solutions:

Problem	Possible Cause	Solution
Blender does not start	Cup not securely attached Low battery Power button not double-pressed	Ensure cup is firmly twisted onto the motor base Recharge the blender Double-press the power button quickly
Ingredients not blending smoothly	Ingredients too large Insufficient liquid Overfilled cup	Cut ingredients into smaller pieces (approx. 1-inch) Add more liquid Do not exceed 80% capacity; gently shake during blending
Indicator light flashing	Low battery Improper assembly	Recharge the unit Re-secure the cup to the motor base

7. SPECIFICATIONS

Detailed technical specifications for the Miaoke Portable Blender Model GZJ-5:

Feature	Specification
Brand	MIAOKE
Model Number	GZJ-5
Dimensions (L x W x H)	7 x 7 x 21 cm (2.7 x 2.7 x 8.3 inches)
Weight	496 grams (1.1 lbs)
Capacity	500 Milliliters
Power	14.8 Watts
Voltage	7.4 Volts
Material	Borosilicate Glass, Stainless Steel
Special Feature	Portable
Power Source	Battery Powered
Battery Type	1 Lithium-ion battery

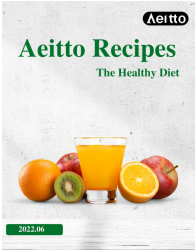




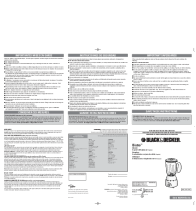


Image 7.1: Dimensions of the MiaoKe Portable Blender and its cleaning brush.

8. WARRANTY AND SUPPORT

All MIAOKE products are covered by a 12-month warranty from the date of purchase. This warranty covers manufacturing defects and issues arising from normal use.

For any issues encountered during the use of your MiaoKe Portable Blender, please contact customer support. Specific contact details are not provided in this manual; please refer to your purchase documentation or the manufacturer's official website for support contact information.

	<p>Aeitto Healthy Juice and Smoothie Recipes Guide</p> <p>Discover a collection of wholesome juice and smoothie recipes from Aeitto, designed to boost energy, provide essential nutrients, and support a healthy diet. This guide features vegan-friendly options, tips for maximizing nutrient retention with an Aeitto Slow Juicer, and a 5-day smoothie challenge.</p>
	<p>KitchenAid Ultra Power Blender 5 Speed: Instructions and Recipes</p> <p>Comprehensive guide for the KitchenAid Ultra Power 5-Speed Blender, covering setup, operation, safety precautions, troubleshooting, warranty information, and a variety of recipes.</p>
	<p>Edge Juice Attitude Installation Instructions for Dodge Cummins Diesel</p> <p>Comprehensive installation guide for the Edge Juice Attitude performance module for Dodge Cummins diesel trucks, covering various model years and providing step-by-step instructions, safety information, and required tools.</p>
	<p>KOIOS 5-in-1 Immersion Hand Blender Set User Manual (Model HB-2046)</p> <p>Comprehensive user manual for the KOIOS 5-in-1 Immersion Hand Blender Set (Model HB-2046). This guide covers safety precautions, unpacking, parts and features, assembly, operation, cleaning, maintenance, tips, and frequent uses for the chopper/grinder attachment.</p>
	<p>KOIOS Centrifugal Juicer Instruction Manual</p> <p>This manual provides instructions for the safe and effective use of the KOIOS Centrifugal Juicer. It includes general parts description, important safeguards, preparation for use, operating instructions, dismantling and assembly, cleaning and care, and specifications.</p>
	<p>Black & Decker Bistro Blender BLD100 Series - Use and Care Manual</p> <p>Official use and care manual for the Black & Decker Bistro 5-speed blender (BLD100 Series). Includes safety instructions, operating guide, cleaning tips, and recipes.</p>