

MIAOKE GZJ-5

MIAOKE Portable Smoothie Blender GZJ-5 User Manual

Model: GZJ-5

1. IMPORTANT SAFETY INFORMATION

Please read all instructions carefully before using your MIAOKE Portable Smoothie Blender. Keep this manual for future reference.

- **Food-Grade Materials:** The juicer cup is made from eco-friendly, food-grade non-toxic PCTG material and is BPA-free.
- **Magnetic Sensing Switch:** For your safety, the blender will only operate when the cup body and motor base are securely connected. Do not attempt to bypass this safety feature.
- **Blade Safety:** Always keep hands and utensils away from the blades during operation and when cleaning. Blades are sharp.
- **Liquid Requirement:** Do not operate the blender without liquid or ingredients inside.
- **Motor Base:** Do not immerse the motor base in water or other liquids. Wipe clean with a damp cloth.
- **Charging:** Use only the provided USB charging cable. Ensure the charging port is dry before connecting.
- **Children:** Keep the appliance out of reach of children.
- **Ice Cubes:** Use small ice cubes only. Large ice cubes can damage the blades and motor.

2. PRODUCT OVERVIEW

The MIAOKE Portable Smoothie Blender is designed for convenience and efficiency, allowing you to prepare fresh beverages anywhere. It features a powerful motor and durable blades for smooth blending.



Figure 1: Exploded view of the MIAOKE Portable Smoothie Blender, showing the Portable Sling Rope, Food Grade PP Lid, Smooth Cup Mouth, Borosilicate Glass cup, Stainless Steel Blade, Indicator Light, USB Charging port, and Motor Base.

Components:

- **Portable Sling Rope:** For easy carrying.
- **Food Grade PP Lid:** Securely seals the cup.
- **Smooth Cup Mouth:** Designed for comfortable drinking.
- **Borosilicate Glass Cup:** Durable and easy to clean.
- **Stainless Steel Blade:** Six-blade 304 stainless steel design for efficient blending.
- **Indicator Light:** Shows operational status and battery level.
- **USB Charging:** Convenient charging port.
- **Motor Base:** Contains the pure copper motor and control button.

Key Features:

- **Powerful Blending:** Equipped with a pure copper motor and 6-blade 304 stainless steel cutter head, achieving 22,000 RPM for quick blending.
- **Rechargeable Battery:** Built-in 2000mAh (3.6V) Lithium-Ion battery, easily rechargeable via USB.
- **Portable Design:** Compact and lightweight, ideal for home, office, gym, or outdoor use.
- **Safety Features:** Magnetic sensing switch ensures safe operation.



Figure 2: MIAOKE Brand Logo.

3. SETUP

Before first use, ensure all components are clean and fully charged.

1. **Unpack:** Carefully remove all components from the packaging.
2. **Wash:** Wash the cup, lid, and blade assembly with warm soapy water. Rinse thoroughly and dry. Do not immerse the motor base in water.
3. **Charge:** Connect the USB charging cable to the motor base and a suitable power source (see Section 5: Charging). Allow the blender to fully charge before initial use.
4. **Assemble:** Ensure the blade assembly is securely attached to the motor base, and the cup is properly aligned and twisted onto the motor base until the magnetic sensing switch engages.

4. OPERATING INSTRUCTIONS

Follow these steps to prepare your favorite beverages:

1. **Prepare Ingredients:** Cut fruits and vegetables into small pieces (approximately 1 inch or smaller) to ensure optimal blending.
2. **Add Ingredients:** Place your desired ingredients into the blender cup. Do not overfill.
3. **Add Liquid:** Pour in water, milk, or other liquids. Ensure there is enough liquid to cover the blades and allow for smooth blending.
4. **Secure Assembly:** Ensure the cup is securely twisted onto the motor base and the lid is firmly closed. The magnetic sensing switch must be engaged for the blender to operate.
5. **Start Blending:** Double-click the power button on the motor base to start blending. The blender will typically run for about 30 seconds per cycle.
6. **Blend:** For best results, you may gently shake the blender during operation to ensure all ingredients are thoroughly mixed.
7. **Stop Blending:** The blender will automatically stop after approximately 30 seconds. You can also press the power button once to stop it manually.
8. **Enjoy:** Remove the lid and enjoy your freshly blended drink. You can also replace the motor base with the included bottom cap for drinking on the go.

Fingertip Cuisine



Figure 3: The blender can be used to make various beverages such as baby food, fruit juice, milkshakes, smoothies, and vegetable juice.

Your browser does not support the video tag.

Video 1: Demonstration of adding ingredients (strawberries, bananas, milk) and blending a smoothie with the MIAOKE Portable Smoothie Blender. The video shows the blender in operation and the resulting smooth beverage.

Your browser does not support the video tag.

Video 2: A short video showcasing the MIAOKE Portable Blender in use, demonstrating the ease of blending various fruits and liquids to create fresh juices and smoothies.

5. CHARGING

The MIAOKE Portable Smoothie Blender is equipped with a USB rechargeable battery for convenient power on the go.

- **Charging Port:** The blender charges via a USB port located on the motor base.
- **Power Sources:** You can charge the blender using various USB-compatible power sources, including:
 - Car chargers
 - Power banks
 - USB wall adapters
 - Laptops

- **Charging Time:** A full charge typically takes approximately 3 hours.
- **Battery Life:** Once fully charged, the blender can perform approximately 10-15 blending cycles, depending on the ingredients.
- **Magnetic Assisted Wireless Charging:** The blender features magnetic assisted wireless charging for ease of use. Simply place the motor base onto the charging pad.

Fully charged to play 12 times



Car



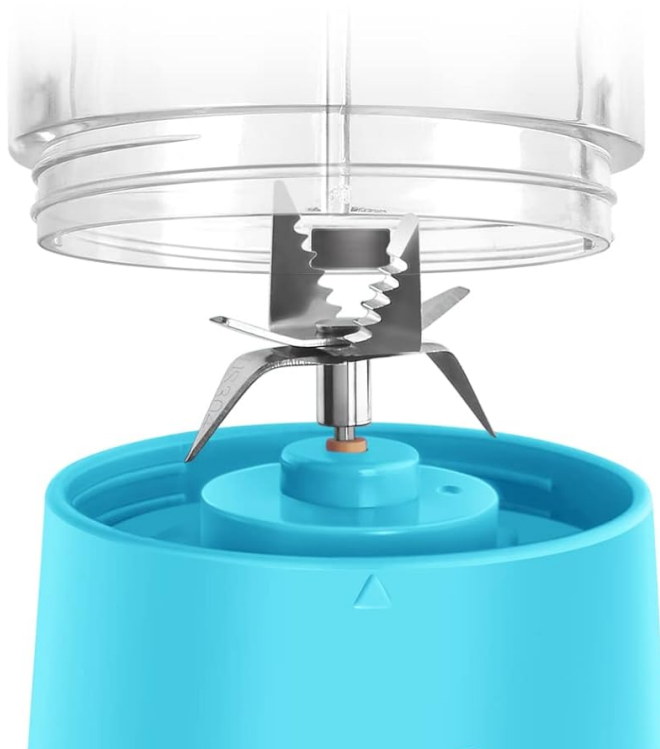
Power Bank



High Efficiency Big Power



Charing Adatper



Portable use, detachable and easy to clean suitable for cars, offices, outdoor activities, gym, school use enjoy a healthy life at any time.

Figure 4: The blender can be charged using various USB sources such as a car charger, power bank, charging adapter, or laptop.

6. CLEANING AND MAINTENANCE

Proper cleaning and maintenance will ensure the longevity and hygiene of your blender.

1. **Immediate Cleaning:** Clean the blender immediately after each use to prevent food residue from drying and sticking.
2. **Disassemble:** Separate the cup from the motor base.
3. **Wash Cup and Lid:** Wash the cup and lid with warm, soapy water. You can also add water and a drop of dish soap to the cup, reattach it to the motor base, and run a short blending cycle for quick cleaning. Rinse thoroughly.
4. **Clean Motor Base:** Wipe the motor base with a damp cloth. **Do not immerse the motor base in water or any other liquid.**
5. **Dry:** Ensure all parts are completely dry before reassembling or storing.
6. **Storage:** Store the blender in a clean, dry place.

7. TROUBLESHOOTING

If you encounter any issues with your MIAOKE Portable Smoothie Blender, refer to the following troubleshooting guide:

Problem	Possible Cause	Solution
Blender does not start.	Cup not securely attached to motor base.	Ensure the cup is properly aligned and twisted onto the motor base until the magnetic sensing switch engages.
Blender does not start.	Battery is low or depleted.	Charge the blender fully (refer to Section 5: Charging).
Blender does not start.	Power button not double-clicked.	Double-click the power button to initiate blending.
Ingredients not blending smoothly.	Ingredients are too large or too much.	Cut ingredients into smaller pieces. Do not overfill the cup.
Ingredients not blending smoothly.	Insufficient liquid.	Add more liquid to ensure ingredients are covered and can move freely around the blades.
Blender stops unexpectedly.	Overload protection activated.	Reduce the amount of ingredients or add more liquid. Allow the motor to cool down before restarting.
Blades are damaged.	Use of large ice cubes or hard ingredients.	Only use small ice cubes. Avoid blending extremely hard ingredients.

8. SPECIFICATIONS



Figure 5: Product dimensions and included USB charging cable.

- **Brand:** MIAOKE
- **Model:** GZJ-5
- **Capacity:** 350 Milliliters
- **Blades:** 6 PCS 304 Stainless Steel
- **Motor Speed:** 22,000 r/min
- **Battery:** 2000mAh Lithium Ion (1 required)
- **Voltage:** 7.4 Volts
- **Power Source:** Battery Powered (USB Rechargeable)
- **Controls Type:** Push Button
- **Material:** Food-grade non-toxic PCTG, Borosilicate Glass, Plastic
- **Special Feature:** Portable, USB Rechargeable, BPA Free
- **Product Dimensions:** 1"D x 1"W x 1"H
- **Item Weight:** 10.6 ounces

9. WARRANTY AND SUPPORT

All MIAOKE products come with a **12-month carefree guarantee**.

If you experience any problems during the use of your MIAOKE Portable Blender, please contact us as soon as possible.

We are committed to offering you a satisfactory solution.

For support, please refer to the contact information provided with your purchase or visit the official MIAOKE website.