

Samsung M80B

SAMSUNG M8 Series 32-Inch 4K UHD Smart Monitor (M80B) Instruction Manual

Model: M80B (LS32BM80GUNXGO)

Brand: Samsung

1. INTRODUCTION

The Samsung M8 Series 32-Inch 4K UHD Smart Monitor (M80B) integrates monitor and smart TV functionalities, offering a versatile display solution. This manual provides essential information for setup, operation, maintenance, and troubleshooting to ensure optimal performance and user experience.

This Smart Monitor allows you to enjoy streaming services, browse the web, edit documents, and connect to various devices without the need for a separate PC. It features a SlimFit camera for video calls, IoT Hub integration for smart home control, and multiple voice assistants for convenient interaction.

2. WHAT'S IN THE BOX

Carefully unpack the box and ensure all items are present. If any items are missing or damaged, contact your retailer.

- Power Cable
- USB-C Cable
- Remote Control
- Batteries (for remote control)
- Stand (Base and Neck)
- SlimFit Webcam



Figure 2.1: The Samsung M8 Smart Monitor and its included accessories.

3. SETUP

3.1 Assembling the Stand

1. Place the monitor screen face down on a soft, clean surface to prevent scratches.
2. Attach the stand neck to the back of the monitor until it clicks securely into place.
3. Attach the stand base to the bottom of the stand neck and secure it with the provided screw.

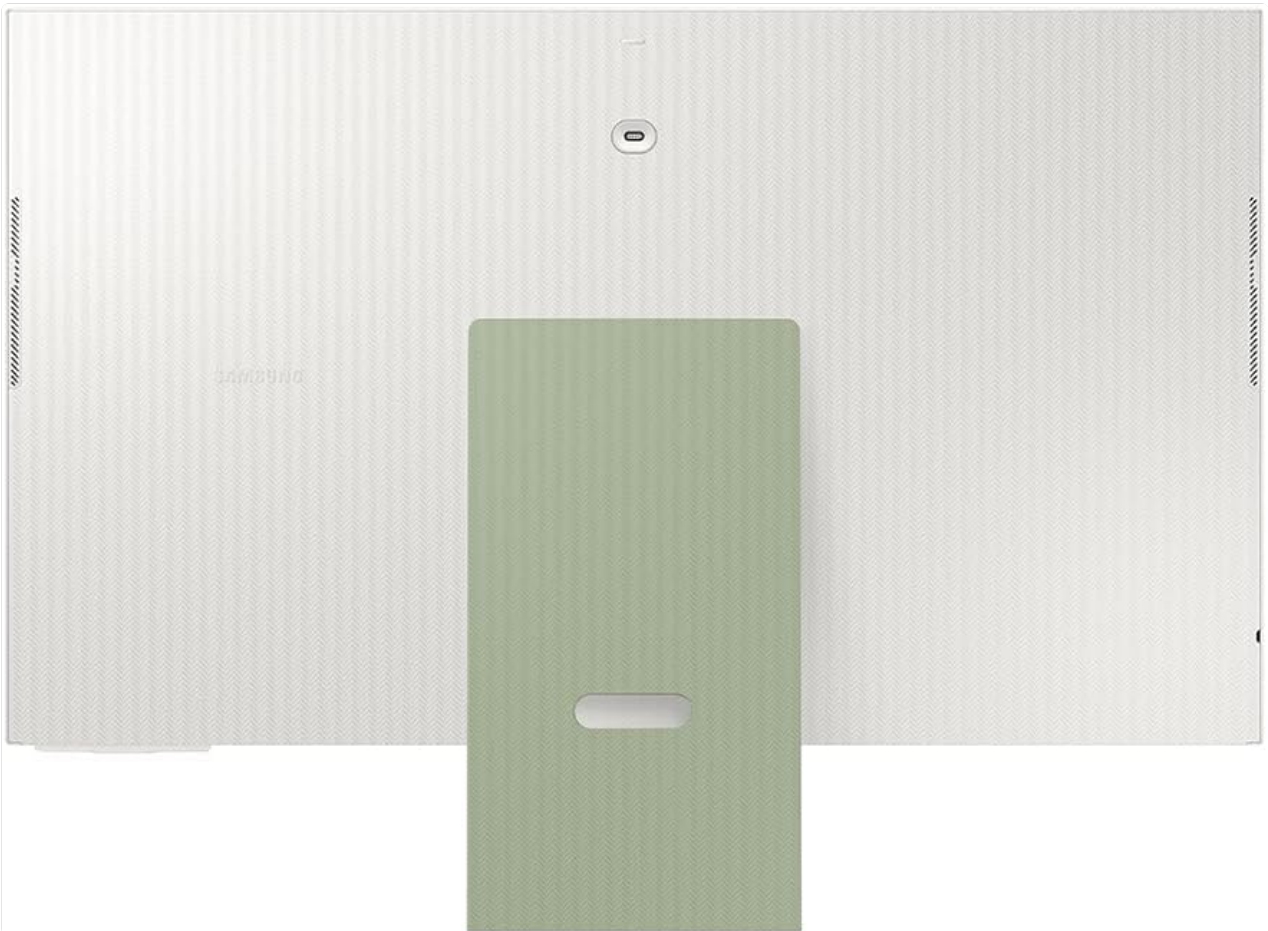


Figure 3.1: Rear view of the monitor with the stand attached, showing the slim profile.

3.2 Connecting the Webcam

The SlimFit camera magnetically attaches to the top center of the monitor. Ensure it is securely seated.



Figure 3.2: The SlimFit webcam magnetically attached to the top of the monitor.

3.3 Power and Device Connections

Connect the power cable to the monitor and a power outlet. Use the provided USB-C cable to connect your PC or laptop for video, data, and power delivery. Alternatively, use an HDMI cable for video input.



Figure 3.3: Detailed view of the monitor's connectivity ports.

4. OPERATING THE SMART MONITOR

4.1 Smart TV Experience

Connect the monitor to Wi-Fi to access built-in streaming apps like Netflix, YouTube, HBO, and Prime Video. Samsung TV Plus offers free, live, and on-demand content. The Universal Guide provides personalized content recommendations.



Figure 4.1: The Smart Monitor's home screen showing various streaming applications.

4.2 PC-less Productivity

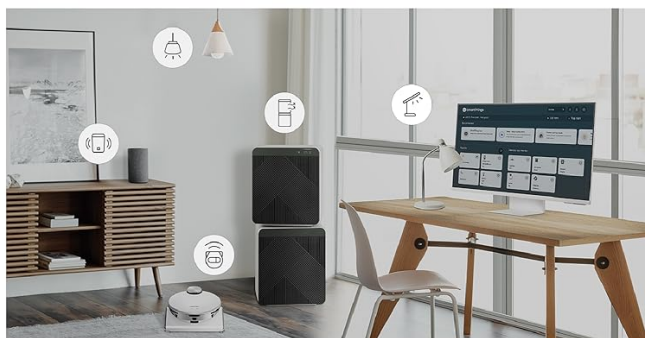
Perform PC tasks directly on the monitor. Browse the web, edit documents using Microsoft 365, and connect to Samsung mobile devices via Samsung DeX. Remote PC access is also supported.

4.3 IoT Hub Integration

Transform your Smart Monitor into a control center for your smart home devices using SmartThings. Manage lights, blinds, and thermostats directly from your monitor.

Hub for your home, from any room

Turn your Smart Monitor into a control center for the home by connecting it to your IoT home products with SmartThings. Relax by turning off the lights, pulling down the blinds and setting the thermostat to the perfect temperature all with the Smart Monitor for a perfectly relaxed evening.

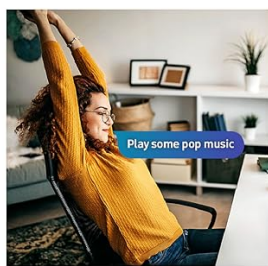


* Available technology, functions and features may vary by country, service provider, network environment or product, and are subject to change without notice.
* Requires a Wi-Fi, Bluetooth or other wireless network connection and devices registered to SmartThings app.
* Connected devices are sold separately.

Figure 4.2: The Smart Monitor integrated with the SmartThings IoT Hub.

4.4 Voice Assistants

Utilize Far Field Voice to activate Bixby or Amazon Alexa. Command the monitor with your voice, even from a distance, for hands-free control.



Just say what you want

With the Far Field Voice feature, activate your voice assistant just by speaking. Directly command the monitor – even at a distance – and tell it what you need. It's as simple as that. The Smart Monitor supports both Bixby and Amazon Alexa.

* Amazon, Alexa and all related marks are trademarks of Amazon.com, Inc. or its affiliates.
* Bixby voice commands recognize English (US/UK/IN), French, Spanish, German, Italian, Portuguese(BR), Chinese (in China mainland only) and Korean.

Figure 4.3: Voice assistant functionality on the Smart Monitor.

4.5 Gaming Features

Enhance your gaming experience with features like Ultrawide Game View (21:9 aspect ratio support) and Game Mode for optimized performance.

Elevate your setup

Express yourself. The Smart Monitor is built with your lifestyle in mind, delivering a more cutting-edge design than ever. With an ultra-slim flat back, neat camera design and beautiful colors, the monitor offers a minimalist look that suits any environment and enhances your setup with super style.

* Apple TV+ may not be available in all regions.

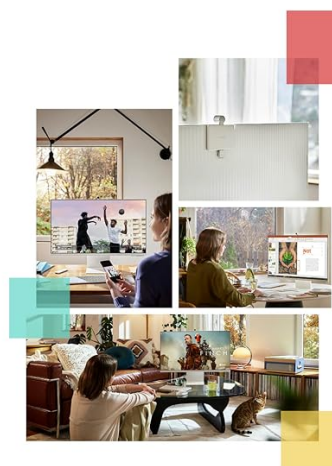


Figure 4.4: Gaming on the Smart Monitor with Ultrawide Game View.

4.6 Adaptive Picture and Sound

The monitor features Adaptive Picture, which automatically adjusts brightness based on ambient light. Adaptive Sound+ optimizes audio based on content and noise levels for a tailored listening experience.

Plug and see

No more switching around. With Automatic Source Switch Plus, your monitor detects newly connected devices as soon they're plugged in, and displays the correct signal. No more searching for the right input on the menu.

* Comparison with existing Samsung product.



Figure 4.5: Adaptive Picture feature adjusting screen brightness based on ambient light.

5. SPECIFICATIONS

Feature	Specification
Standing screen display size	32 Inches
Screen Resolution	3840 x 2160 (4K UHD)
Max Screen Resolution	3840x2160 Pixels
Refresh Rate	60 Hz
Display Technology	LED
Aspect Ratio	16:9
Operating System	Tizen
Connectivity Technology	Bluetooth, Wi-Fi
USB 2.0 Ports	1
USB 3.0 Ports	1
Audio-out Ports	1
Item Weight	14.8 pounds
Product Dimensions	8 x 28.1 x 22.6 inches
Color	Spring Green

6. MAINTENANCE

6.1 Cleaning the Monitor

- Always unplug the monitor before cleaning.
- Use a soft, lint-free cloth lightly dampened with water or a screen cleaner.
- Do not spray cleaner directly onto the screen.
- Avoid using abrasive cleaners, waxes, or solvents.

6.2 Software Updates

Ensure your Smart Monitor's software is up-to-date for optimal performance and security. Updates can typically be found and installed through the monitor's settings menu when connected to the internet.

7. TROUBLESHOOTING

7.1 No Signal Displayed

- Check if the power cable is securely connected to both the monitor and the power outlet.
- Verify that the HDMI or USB-C cable is correctly connected to both the monitor and your source device (PC, laptop, etc.).
- Ensure your source device is powered on and outputting a signal.
- Use the monitor's remote control to select the correct input source.

7.2 Power Issues

- If the monitor does not turn on, check the power cable and outlet.
- Try plugging another device into the same outlet to confirm it is working.
- Ensure the remote control batteries are charged (the remote has a solar panel for recharging).

7.3 Sound Problems

- Check the volume settings on both the monitor and your source device.
- Ensure no external headphones or speakers are connected if you intend to use the monitor's built-in speakers.
- Verify that the audio output settings on your source device are configured to send audio to the monitor.

8. WARRANTY AND SUPPORT

Your Samsung M8 Series Smart Monitor is covered by a manufacturer's warranty. Please refer to the warranty card included in your product packaging for detailed terms and conditions.

For technical support, service inquiries, or to purchase additional protection plans, please visit the official Samsung support website or contact their customer service helpline. Keep your proof of purchase and model number handy when contacting support.