

## TOTOLINK A720R

# TOTOLINK A720R AC1200 Wireless Dual Band Router User Manual

Model: A720R

## INTRODUCTION

---

The TOTOLINK A720R is an AC1200 Wireless Dual Band Router designed for high-traffic online activities, offering enhanced speed and coverage for home and office environments. It complies with the IEEE 802.11ac Wave 2 Wi-Fi standard, providing a total speed of 1167Mbps across dual bands (867Mbps on 5GHz and 300Mbps on 2.4GHz). This manual provides detailed instructions for setting up, operating, maintaining, and troubleshooting your A720R router.

## PACKAGE CONTENTS

---

Before you begin, please verify that all items are present in your package:

- A720R Wireless Router x 1
- Power Adapter x 1
- Ethernet Cable x 1
- Quick Installation Guide x 1

## PRODUCT OVERVIEW

---

Familiarize yourself with the physical components of your TOTOLINK A720R router.



**Figure 1:** Front view of the TOTOLINK A720R router. It features a sleek black design with four adjustable omni-directional antennas and a central LED indicator that glows blue when powered on and operating correctly.



**Figure 2:** Rear view of the TOTOLINK A720R router, highlighting the connectivity ports. From left to right, you can see the Reset/WPS button, two LAN ports (LAN1, LAN2), one WAN port, and the DC power input.



**Figure 3:** A detailed close-up of the rear panel ports on the TOTOLINK A720R router. This view clearly shows the two yellow LAN ports, the orange WAN port, and the DC power input, along with the small reset button.

## SETUP

---

### Hardware Connection

1. **Power Connection:** Connect the provided power adapter to the DC In port on the router and plug the other end into a standard electrical outlet. The power LED indicator on the router should light up.
2. **WAN Connection:** Connect one end of the Ethernet cable from your modem or main internet source to the WAN port (often colored differently, e.g., orange) on the A720R router.
3. **LAN Connection (Optional):** For wired devices, connect one end of an Ethernet cable to a LAN port (LAN1 or LAN2) on the router and the other end to the Ethernet port of your computer or other network device.
4. **Wait for Initialization:** Allow a few minutes for the router to power on and initialize. The system indicator LED should become stable, indicating readiness.

### Initial Configuration (Web Interface)

To configure your router, access its web-based management interface:

1. Ensure your computer is connected to the router either via Wi-Fi (look for the default SSID printed on the router's label) or via an Ethernet cable to a LAN port.
2. Open a web browser (e.g., Chrome, Firefox, Edge).
3. In the address bar, type the default IP address of the router (commonly 192.168.1.1 or 192.168.0.1, refer to the label on your router or the Quick Installation Guide for the exact address) and press Enter.
4. A login window will appear. Enter the default username and password (commonly admin for both, or as specified on the router's label).
5. Follow the on-screen setup wizard to configure your internet connection type (DHCP, Static IP, PPPoE, PPTP, L2TP) and Wi-Fi settings (SSID, password).

## OPERATING INSTRUCTIONS

---

### Wi-Fi Network Configuration

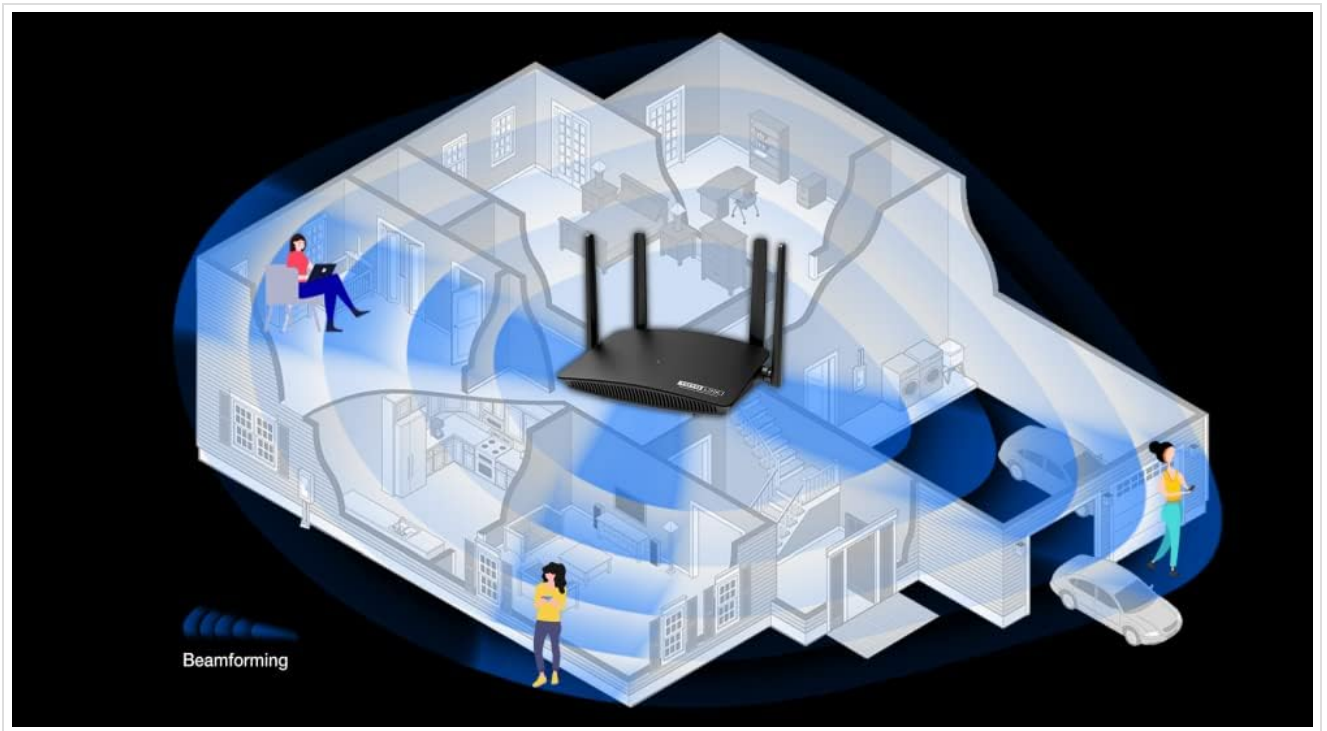
After initial setup, you can further customize your Wi-Fi networks:

- **SSID Broadcast:** Enable or disable the broadcast of your Wi-Fi network names (SSIDs) for both 2.4GHz and 5GHz bands.
- **Security Settings:** Configure WPA/WPA2 mixed security for robust network protection. It is highly recommended to use a strong, unique password for your Wi-Fi networks.
- **Guest Network:** Create separate guest networks to provide internet access to visitors without compromising your main network's security.

### Advanced Features

The A720R router supports several advanced features to optimize your network performance and security:

- **Beamforming Technology:** This technology intelligently directs Wi-Fi signals towards connected devices, improving signal strength and reducing dead spots.

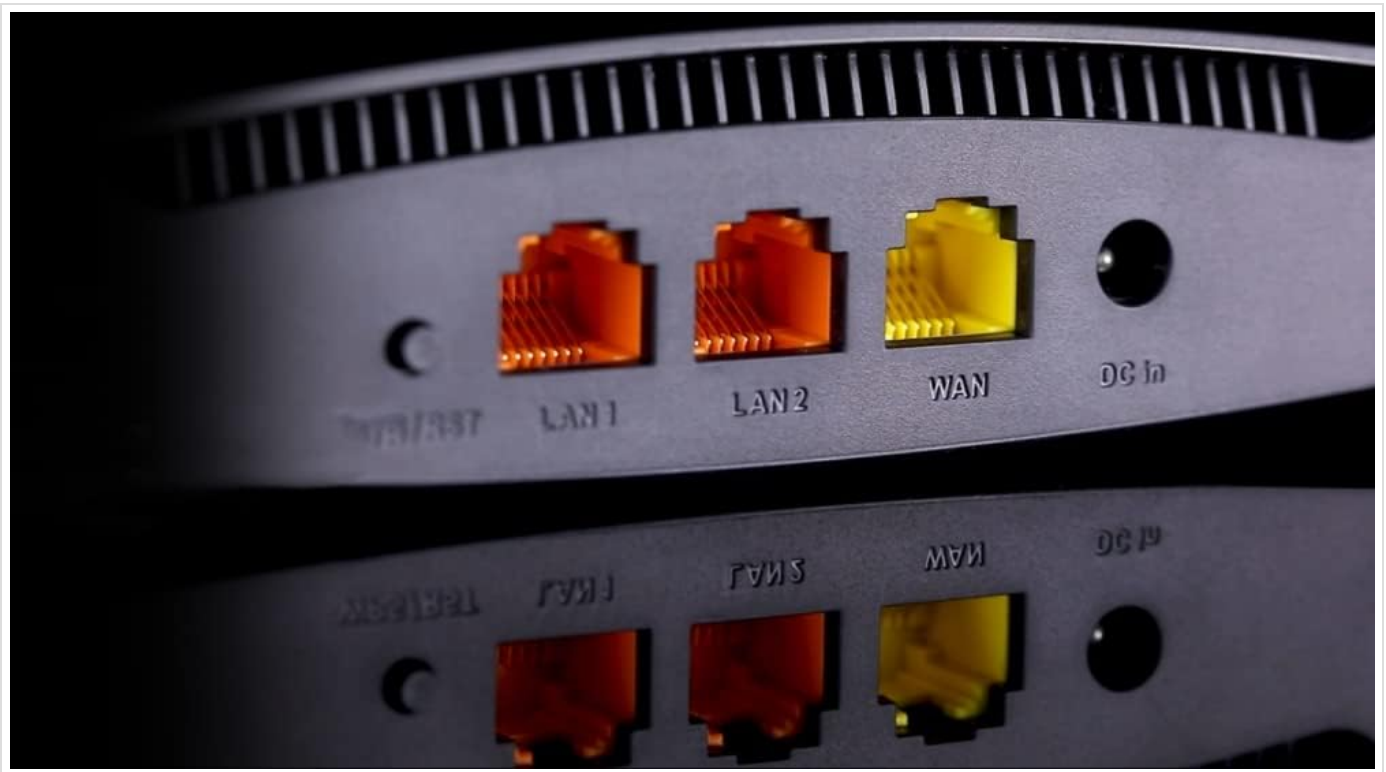


**Figure 4:** An illustration demonstrating Beamforming technology. The router intelligently focuses its Wi-Fi signals directly to connected devices, enhancing coverage and performance throughout a multi-room environment.

- **Quality of Service (QoS):** Prioritize network traffic for specific applications or devices (e.g., online gaming, video streaming) to ensure smooth performance.
- **IPTV Function:** Enjoy online movies and TV services directly through your router's IPTV functionality.
- **IPv6 Support:** The router supports IPv6, the latest version of the Internet Protocol, ensuring future compatibility and improved efficiency.
- **Security Features:** Utilize IP address filtering, port filtering, MAC filtering, URL filtering, and port forwarding to manage network access and enhance security.



**Figure 5:** The TOTOLINK A720R router positioned in a typical home environment, demonstrating its compact size and aesthetic integration into a living space.



**Figure 6:** An overhead schematic illustrating the Wi-Fi signal distribution from the TOTOLINK A720R router, showing its ability to provide coverage across various rooms within a home or office layout.

## MAINTENANCE

---

- **Firmware Updates:** Regularly check the TOTOLINK official website for the latest firmware updates. Updating firmware can improve performance, add new features, and fix security vulnerabilities. Follow the instructions provided with the firmware download carefully.
- **Factory Reset:** If you encounter persistent issues or forget your login credentials, you can perform a factory reset. Locate the Reset/WPS button on the router (often a small pinhole button). With the router powered on, press and hold this button for approximately 5-10 seconds until the indicators flash, then release. The router will revert to its default factory settings.
- **Cleaning:** Keep the router clean and free from dust to ensure proper ventilation. Use a soft, dry cloth to wipe the exterior. Do not use liquid cleaners or aerosols.

## TROUBLESHOOTING

---

### No Internet Access

- Check if the WAN port LED is lit. If not, ensure the Ethernet cable from your modem is securely connected to the router's WAN port.
- Verify that your modem is working correctly and has an active internet connection.
- Restart both your modem and the router by unplugging them from power for 30 seconds and then plugging them back in.
- Log in to the router's web interface and check your internet connection settings (WAN settings). Ensure the connection type (DHCP, PPPoE, etc.) is correctly configured according to your ISP.

### Cannot Connect to Wi-Fi

- Ensure the Wi-Fi function is enabled on the router (check the Wi-Fi LED indicator).
- Verify that you are entering the correct Wi-Fi password (WPA/WPA2 key). Passwords are case-sensitive.

- Move closer to the router to ensure you are within range.
- Try restarting your device (laptop, smartphone) and then attempt to connect again.
- If you have enabled SSID broadcast, ensure your device can see the network name. If not, manually add the network.

## Slow Wi-Fi Speed

- Ensure your devices are connecting to the 5GHz band if they support it, as it generally offers higher speeds and less interference.
- Reduce the number of devices connected to the network, especially those performing high-bandwidth activities.
- Check for interference from other electronic devices (cordless phones, microwaves) and try changing the Wi-Fi channel in the router settings.
- Position the router in a central location, away from obstructions and reflective surfaces.

## SPECIFICATIONS

Feature	Detail
Model Number	A720R
Wireless Standard	IEEE 802.11ac Wave 2, 802.11a/b/g/n
Frequency Bands	2.4GHz and 5GHz (Dual-Band)
Wireless Speed	1167Mbps (300Mbps on 2.4GHz, 867Mbps on 5GHz)
Antennas	4 x Omni-directional Antennas
Ports	1 x WAN, 2 x LAN (Fast Ethernet)
Security	WPA/WPA2 Mixed Security
Features	Beamforming, QoS, IPTV, IPv6, DHCP, Static IP, PPPoE, PPTP, L2TP, IP/Port/MAC/URL Filtering, Port Forwarding
Product Dimensions	14.2 x 9.5 x 4.1 cm
Weight	340 g
Manufacturer	Zioncom

## WARRANTY AND SUPPORT

The TOTOLINK A720R router comes with a **2-year warranty** from the date of purchase. This warranty covers manufacturing defects and ensures the product functions as described under normal use.

For technical support, firmware updates, or further assistance, please visit the official TOTOLINK website or contact their customer support. Keep your purchase receipt for warranty claims.

For more information, visit: [www.totolink.cn](http://www.totolink.cn)

# Documents - TOTOLINK – A720R

**TOTOLINK**  
The Internet Always Starts Here

www.totolink.net

## A720R Quick Installation Guide

It is suitable for: **A720R**

### Installation Diagram

### Interface

### Method One: login via tablet/Cellphone

**STEP-1:**  
Activate the WLAN function on your Phone and connect to TOTOLINK\_A720R or TOTOLINK\_A720R\_5G. Then run any Web browser and enter <http://totolink.net> in the address bar.

**STEP-2:**  
Enter admin for the password and then click LOGIN.

**STEP-3:**  
Click Quick Setup.

**STEP-4:**  
Time zone setting. According to your location, please click the Time zone to choose a correct one from the list, then click Next.

**STEP-5:**  
Internet Setting. Choose a suitable connection type from the list and fill in the information required, then click Next.

**STEP-6:**  
Wireless Setting. Create passwords for 2.4G and 5G Wi-Fi. (New users could also revise the default Wi-Fi name) and then click Next.

**STEP-7:**  
For security, please create a new Login Password for your router, then click Next.

**STEP-8:**  
The coming page is the Summary information for your setting. Please remember your Wi-Fi Name and Password, then click Done.

**STEP-9:**  
It takes several seconds to save the settings and then your router will restart automatically. This time your Phone will be disconnected from the router. Please back to the WLAN list of your phone to choose the new Wi-Fi name and input the correct password. Now, you could enjoy the Wi-Fi.

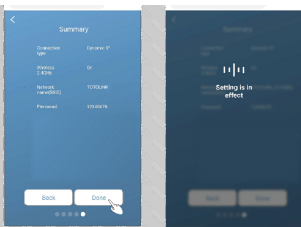


[pdf] Installation Guide Frequently Asked Questions Guide Diagram

FAQ 221 A720R Quick Installation Guide TOTOLINK It takes several seconds to save the settings and then your router will restart automatically This time Phone be disconnected from

8a5c4582e39da601043bebae8fd730b0 totolink net data upload 20200827

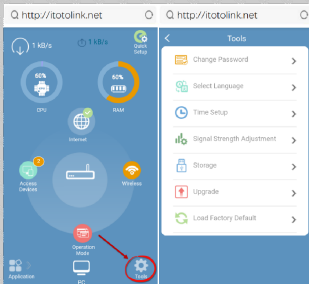
www.totolink.net **A720R** Quick Installation Guide It is suitable for**A720R** Installation Diagram Interface Method One: login via tablet/Cellphone STEP-1: STEP-2: Activate the WLAN function on your Phone and connect to TOTOLINK\_ **A720R** or TOTOLINK\_ **A720R**\_5G . Then run any Web browser and enter http://it... lang:en score:36 filesize: 3.24 M page\_count: 1 document date: 2020-08-28



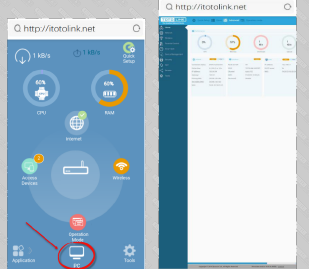
STEP-10: More Features: Click Application.



STEP-11: More Features: Click Tools.



STEP-12: More Features: Click PC.



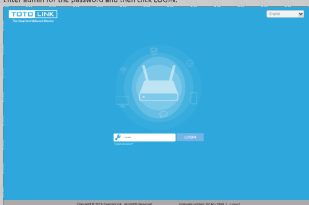
Method Two: login via PC

STEP-1:

Connect your computer to the router by cable or wireless. Then run any Web browser and enter http://totolink.net in the address bar.

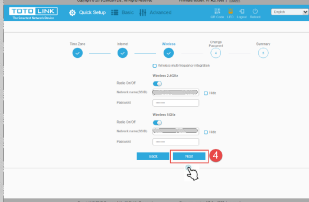
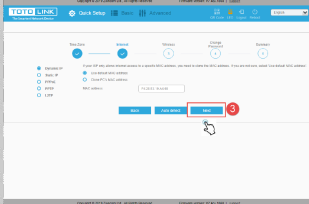
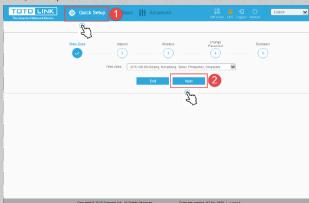
STEP-2:

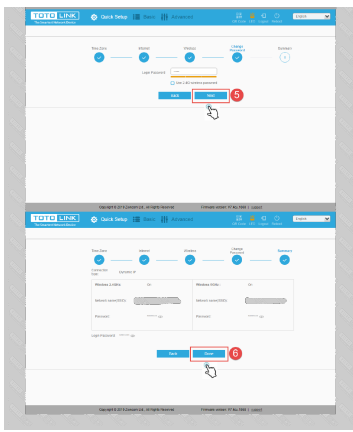
Enter admin for the password and then click LOGIN.



STEP-3:

Click Quick Setup.





[\[pdf\]](#) Datasheet

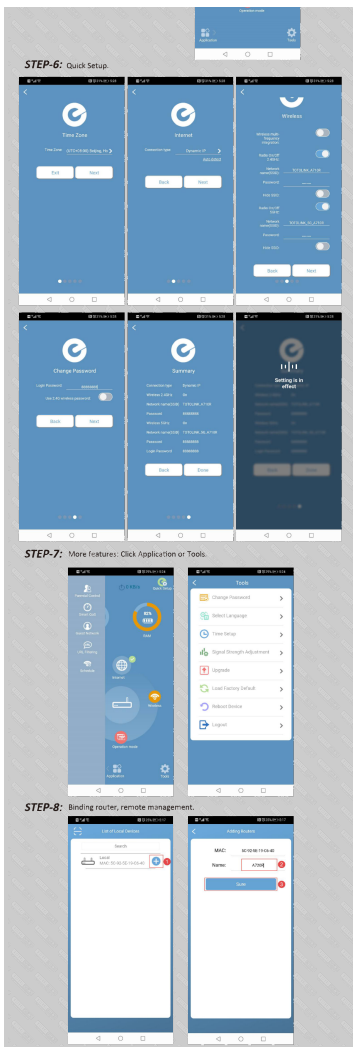
A720R datasheet Ver1 0 totolink net AC Wireless Dual Band Router

fa17abf4e3da462ae9a0501aaa130e80 data upload 20200807

www.totolink.net **A720R** AC Wireless Dual Band Router APP IPTV Repeater Parental Control Overview AC1200 Wireless Dual Band Router Model No. **A720R** The **A720R** is a fast 802.11ac router with incredible range. It's better than many routers that are twice as expensive. This advanced Wi-Fi is design...

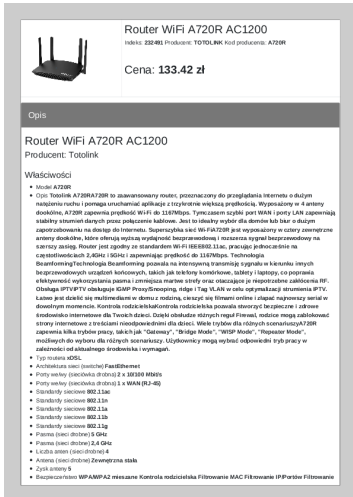
lang:en score:35 filesize: 712.05 K page\_count: 5 document date: 2020-08-08





router Application introduction: This articles Applies to wireless router that s compatible with TOTOLINK App. This article will take **A720R** as an example. Set up steps STEP-1: Follow the steps below to connect your route...

lang:en score:34 filesize: 3.61 M page\_count: 1 document date: 2020-08-28



[\[pdf\]](#)

Router WiFi A720R AC1200 Sklep internetowy stylem pl router wifi a720r ac1200 232491 upload files product |||

Router WiFi **A720R** AC1200 Indeks: 232491 Producent: TOTOLINK Kod producenta:

**A720R** Cena: 133.42 zł Opis Router WiFi **A720R** AC1200 Producent: Totolink

Wlaciwoci Model **A720R** Opis Totolink **A720RA720R** to zaawansowany router, przeznaczony do przegldania Internetu o duym nateniu ruchu i pomaga uruchamia apl...

lang:pl score:33 filesize: 155.79 K page\_count: 3 document date: 2023-04-03

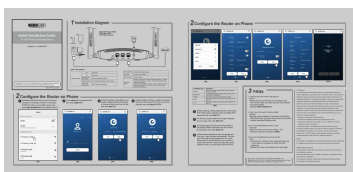


[TOTOLINK A720R AC1200 Wireless Dual Band Router - High-Speed Wi-Fi & Advanced Features](#)

Discover the TOTOLINK A720R, an AC1200 Wireless Dual Band Router delivering up to 1167Mbps speeds, beamforming technology, IPv6 support, and comprehensive security features for optimal home and office networking.

lang:en score:33 filesize: 711.88 K page\_count: 5 document date: 2020-04-07

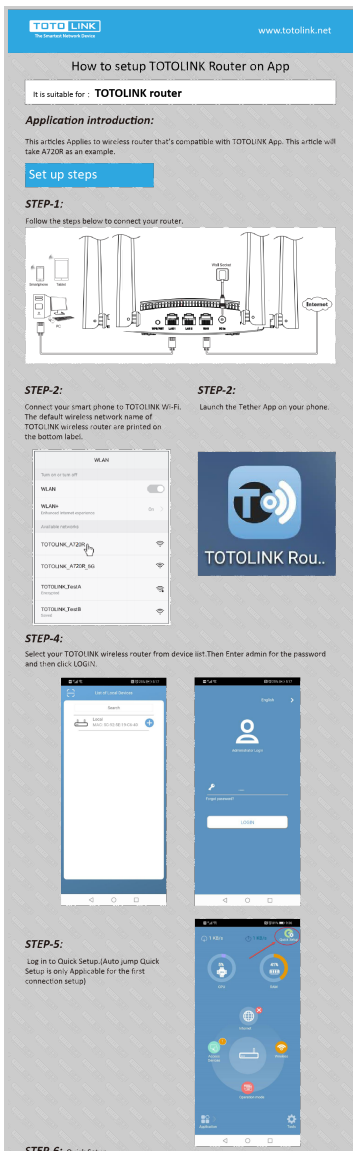
[\[pdf\] Installation Guide Diagram](#)



134032510 TOTOLINK A720R IP04432 interference and 2 this device must accept any received including that may cause undesired operation 7d7526af8f1ecc2ae13d0d2cb0736d09 totolink net data upload 20230210 |||

Quick Installation Guide AC1200 Wireless Dual Band Router Suitable for : A710R/A720R 1 Installation Diagram Default Wi-Fi Name SSIDs TOTOLINK\_A710R TOTOLINK\_A710R\_5G Smartphone Tablet Wall Socket PC Copyrights TOTOLINK. All Rights Reserved. Website:http://www.totolink.net Information in this ...

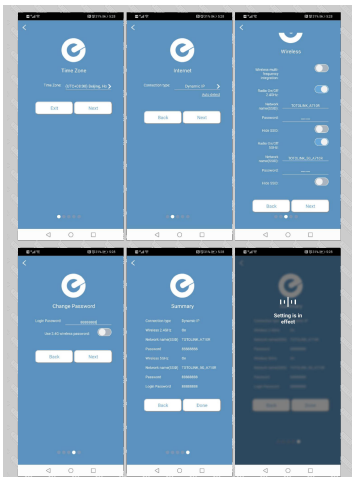
lang:en score:30 filesize: 382.09 K page\_count: 1 document date: 2023-02-10



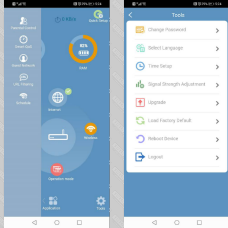
[\[pdf\] Frequently Asked Questions Label](#)

FAQ 223 How to setup TOTOLINK Router on App Set up steps totolink net It is suitable for TOTOLINK router This articles Applies wireless that s compatible with f0e877c00b2f95865b05d3204b46a190 data upload 20200827 |||

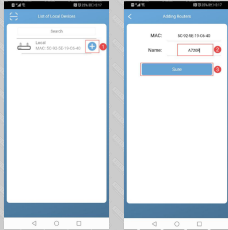
www.totolink.net How to setup TOTOLINK Router on App It is suitable forTOTOLINK router Application introduction: This articles Applies to wireless router that s



STEP-7: More features: Click Application or Tools.



STEP-8: Binding router, remote management.



compatible with TOTOLINK App. This article will take **A720R** as an example. Set up steps STEP-1: Follow the steps below to connect your route...

lang:en score:29 filesize: 3.61 M page\_count: 1 document date: 2020-08-28

**TOTOLINK** The Smartest Network Device

**ROMAT** romsat.ua

### Оновлення програмного забезпечення для пристроїв TOTOLINK

**ВАЖЛИВО:**

1. Ця процедура виконується виключно на комп'ютері. Будь-який спробований встановити завантаженому файлу на пристрій може призвести до збою роботи пристрою. Будь-які спроби встановити завантаженому файлу на пристрій можуть призвести до збою роботи пристрою. Будь-які спроби встановити завантаженому файлу на пристрій можуть призвести до збою роботи пристрою. Будь-які спроби встановити завантаженому файлу на пристрій можуть призвести до збою роботи пристрою.
2. НЕ вимикайте пристрій під час встановлення програмного забезпечення. Якщо пристрій вимкнено, процес встановлення може бути порушений і пристрій може не працювати.
3. Після завершення встановлення програмного забезпечення пристрій може бути перезавантажений автоматично. Чекайте на скрінинг 30-15 секунд після завершення встановлення програмного забезпечення.

Пристрої: **N100RE, N150RT, N200RT, N300RT, A702R\_V2, A3002RU, T10 та інші**

**Щоб здійснити оновлення, виконайте наступне:**

1. Підключіть пристрій до мережі через кабель Ethernet або безпроводний Wi-Fi адаптер, і потім відкрийте адресу <http://192.168.0.1> в адресній рядку вашого браузера.
2. Введіть користувача та пароль адміністратора в поле **admin** та поле **password**. Натисніть **Вхід**.

Примітка:  
Адреса [192.168.0.1](http://192.168.0.1) за замовчуванням може змінитися. Будь-які спроби встановити завантаженому файлу на пристрій можуть призвести до збою роботи пристрою.

**Авторизація** Завантажити пароль?

Ім'я:

Пароль:

Надати доступ:

**355K**

**Вхід**

3. Після успішного встановлення програмного забезпечення пристрій буде перезавантажений автоматично. Чекайте на скрінинг 30-15 секунд після завершення встановлення програмного забезпечення.

[pdf] Frequently Asked Questions Catalog

FAQ 92 Оновлення програмного забезпечення для пристроїв TOTOLINK Пристрої N200RT N350RT A702R A720R A3300R A3002R та інші Щоб здійснити оновлення виконайте наступне Почекайте кілька хвилин до поки маршрутизатор romsat ua local templates romsat 2021 components topSecret catalog 2019 products bitrix element default file id 216928 |||

romsat.ua TOTOLINK : 1. , , , , , V1.1 V1x = 1.2.3. .... : 3 : - ..... N200RT, N350RT, A702R, **A720R**, A3300R, A3002R . , 1. Wi-Fi , <http://itotolink.net> . 2. : admin

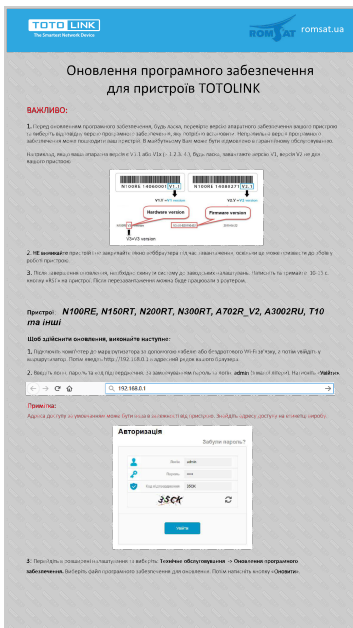
lang:fi score:24 filesize: 682.94 K page\_count: 2 document date: 2024-08-01



[pdf] Datasheet

A702R datasheet V1 5 20170119 totolink net AC1200 is a Wireless Dual Band Router which complies with the most advanced 802.11ac standard and can deliver pcvcomp cz img asp attid 899676 80 include path down 010100 file

www.totolink.net AC1200 Wireless Dual Band Router Model No. A702R A702R is a Wireless Dual Band Rout ... - 51 dBm VHT40 MCS9: - 54 dBm VHT20 MCS9: - 57 dBm Copyright2014 TOTOLINK ., All right reserved **A720R** AC1200 Wireless Dual Band Router Software Operation Mode WAN Type IPv6 Network Wireless Func... lang:en score:24 filesize: 278.03 K page\_count: 3 document date: 2017-01-20



[pdf] Frequently Asked Questions Catalog

FAQ 92 Оновлення програмного забезпечення для пристроїв TOTOLINK Пристрої N100RE N150RT N200RT N300RT A702R V2 A3002RU T10 та інші Щоб здійснити оновлення виконайте наступне ВАЖЛИВО 2 НЕ вимикайте пристрій і file id 216936 romsat ua local templates 2021 components topSecret catalog 2019 products bitrix element default |||

romsat.ua TOTOLINK : 1. , , , , , , V1.1 V1x = 1.2.3. ... : - . . . . . N200RT, N350RT, A702R, **A720R**, A3300R, A3002R . , : 1. Wi-Fi , http://itotolink.net . 2. : admin

... lang:fi score:23 filesize: 682.94 K page\_count: 2 document date: 2024-08-01

**TOTO LINK** www.totolink.net

### How to use and set up IPTV on New User Interface?

It is suitable for : **N200RE\_V5, N350RT, A720R, A3700R, A7100RU, A8000RU**

**Application introduction:**  
This article will introduce the configuration of IPTV function and will guide you to configure this function correctly.

**Note:**  
If you have already accessed to Internet and IPTV function normally by default, please ignore this article, just keep the default settings of IPTV page in this article, we will take N350RT as an example.

**Set up steps**

**STEP-1: Log in the Web-configuration interface**  
Connect your computer to the router by cable or wireless, enter http://192.168.0.1

**STEP-2: Introduce of IPTV setting page**  
On the left menu, go to Network > IPTV Setting

**STEP-3: We can see the configuration webpage of the IPTV**  
Please keep the NGMP Proxy and IGMP version as default, since your ISP told you to modify.

**STEP-4: What's the difference between different IPTV modes**  
There are many "mode" available in the IPTV setting page. These modes are designed for different ISPs. In other words, the mode which you need to choose is up to your ISP.

Obviously, Singapore-singtel, Malaysia-Unifi, Malaysia-Maxis, VTV and Taiwan are designed for specific ISPs. They don't need you to type in VLAN information, we just use this mode when ISP doesn't require VLAN settings.  
User Define mode is used for some of the ISPs which require 802.1Q VLAN settings for IPTV service.

**STEP-5: What's the difference between different IPTV modes**  
If your ISP is singtel, Unifi, Maxis, VTV or Taiwan. Just select Singapore-singtel, Malaysia-Unifi, Malaysia-Maxis, VTV or Taiwan mode. Then you need not to type in any information mode if you choose these mode, just click "Apply" to complete the configuration. Please refer to the steps below to configure this mode.  
Here I select Taiwan Mode LAN1 for IPTV service as an example.

**STEP-6: If your ISP is not in the list and needs VLAN settings**  
If your ISP is not in the list and needs VLAN settings. Please select Custom mode and type in the detailed parameters manually. You need check the information to your ISP at first. Please follow the steps below to configure.

1. Select Enable to open up IPTV function.
2. Select User Define mode.
3. Then set LAN ports for different services. For example, here I select LAN1 for IPTV service.
4. The 802.1Q Tag and IPTV Multicast VLAN ID are set up to your ISP. (Normally the 802.1Q Tag should be checked).
5. Type in the VLAN ID for different services, the VLAN ID should be provided by your ISP. For example, if my ISP has told me that they use VLAN 10 for Internet service, VLAN 20 for IP-Phone service and VLAN 30 for IPTV service. And the priority need not to configure.
7. click "Apply" to complete the configuration.

[pdf] Frequently Asked Questions Guide

FAQ 222 How to use and set up IPTV on New User Interface TOTOLINK Obviously Singapore singtel Malaysia Unifi Maxis VTV Taiwan are designed for specific ISPs They doesn t need you type in VLAN 520572a2330d9df29860124ee11f0576 totolink net data upload 20200827

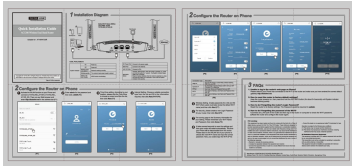
www.totolink.net How to use and set up IPTV on New User Interface It is suitable for N200RE\_V5, N350RT, **A720R**, A3700R, A7100RU, A8000RU Application introduction: This article will introduce the configuration of IPTV function and will guide you to configure this function correctly Note: If you have a... lang:en score:17 filesize: 649.34 K page\_count: 1 document date: 2020-08-28



TOTOLINK 2025 Product Brochure: Advanced Networking Solutions

Explore the latest innovations in wired and wireless networking devices for home and office environments from TOTOLINK, a global leader in SOHO networking products. This brochure highlights their comprehensive range of high-performance WiFi routers, mesh systems, 5G/4G CPE, and smart home/office solutions for 2025.

lang:en score:13 filesize: 4.77 M page\_count: 104 document date: 2024-12-04

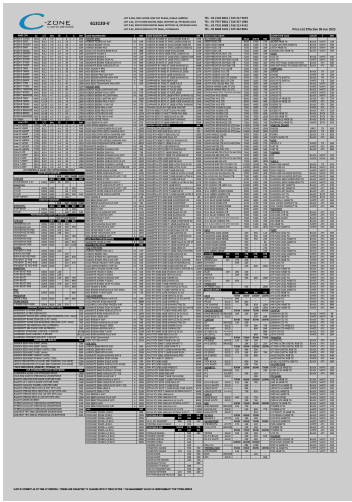


[pdf]

134031050 TOTOLINK A720R A710R IP04432 Please check if your phone has connected to the Wi Fi of router and make sure you have entered correct default gateway itotolink net  
31defbe9379b160be63ae5b0df4888c4 totolink data upload 20200412

...

lang:en score:12 filesize: 1.01 M page\_count: 1 document date: 2020-04-03



### [C-ZONE Computer Hardware and Accessories Price List](#)

C-ZONE offers a comprehensive selection of computer hardware and accessories, catering to all your tech needs. From the latest CPUs and GPUs to essential peripherals and networking solutions, C-ZONE provides quality products with competitive pricing. Updated June 2025.

lang:i-klngon score:12 filesize: 636.31 K page\_count: 2 document date: 2025-06-06