

## Afloia KILO

# Afloia Washable & Removable Pet Replacement Filter Instruction Manual

FOR KILO, KILO PLUS, MIRO PRO, AND KILO PRO AIR PURIFIERS

---

## 1. Product Overview

This document provides instructions for the Afloia Washable & Removable Pet Replacement Filter. This filter is designed to maintain optimal air purification performance in compatible Afloia air purifier models by capturing airborne particles and odors.



Image: The Afloia replacement filter, a cylindrical white filter with a black top ring, shown alongside a small corgi dog, illustrating its purpose for pet owners.

## 2. Compatibility

The Afloia Washable & Removable Pet Replacement Filter is compatible with the following Afloia air purifier models:

- Afloia Kilo Air Purifier (ASIN: B08PCXJVFH)
- Afloia Kilo Plus Air Purifier (ASIN: B09P8KBW5V)
- Afloia Miro Pro Air Purifier (ASIN: B088FJ8YBJ)
- Afloia Kilo Pro Air Purifier (ASIN: B08YT4TNJD)

Ensure your air purifier model is listed above for proper fit and function.

# Compatible with

kilo, kiloplus, kilopro, miro, miropro



Image: Various Afloia air purifier models (Kilo, Kilo Plus, Miro, Miro Pro) displayed, indicating compatibility with the replacement filter.

## 3. Features and Filtration System

This replacement filter utilizes a 360° 3-stage filtration system to effectively purify air:

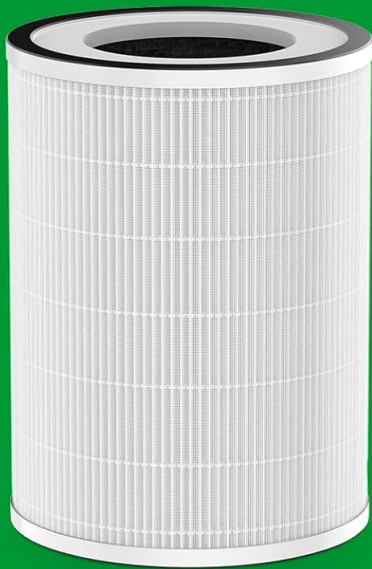
- **Pre-filtration Layer:** Captures larger particles such as pet fur, dust, lint, and fibers. This layer is washable and removable for extended filter life.
- **Efficient Filtration Layer:** Targets smaller airborne particles including bacteria, mold, pollen, and pet dander.
- **Activated Carbon Filter:** Absorbs smoke, fumes, volatile organic compounds (VOCs), pet odors, and cooking smells.

This comprehensive filtration system is designed to remove 99.99% of airborne particles 0.3 microns in size.

# Please Use **Afloia** Original Replacement Filter

Perfect Match  
High Quality

## OUR FILTER



Wrong Size  
Poor Quality

## OTHERS

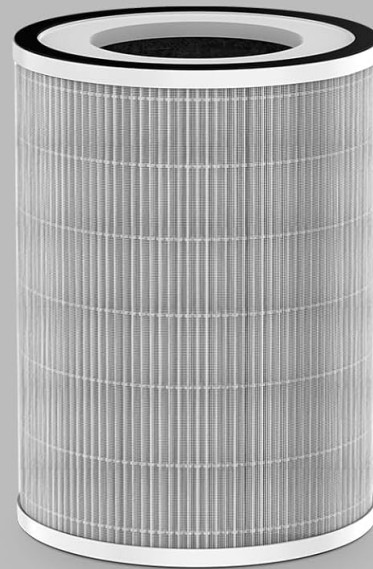


Image: A cutaway diagram illustrating the three layers of the 360° filtration system: Pre-filtration, Efficient Filtration, and Activated Carbon Filter, with descriptions of what each layer targets.



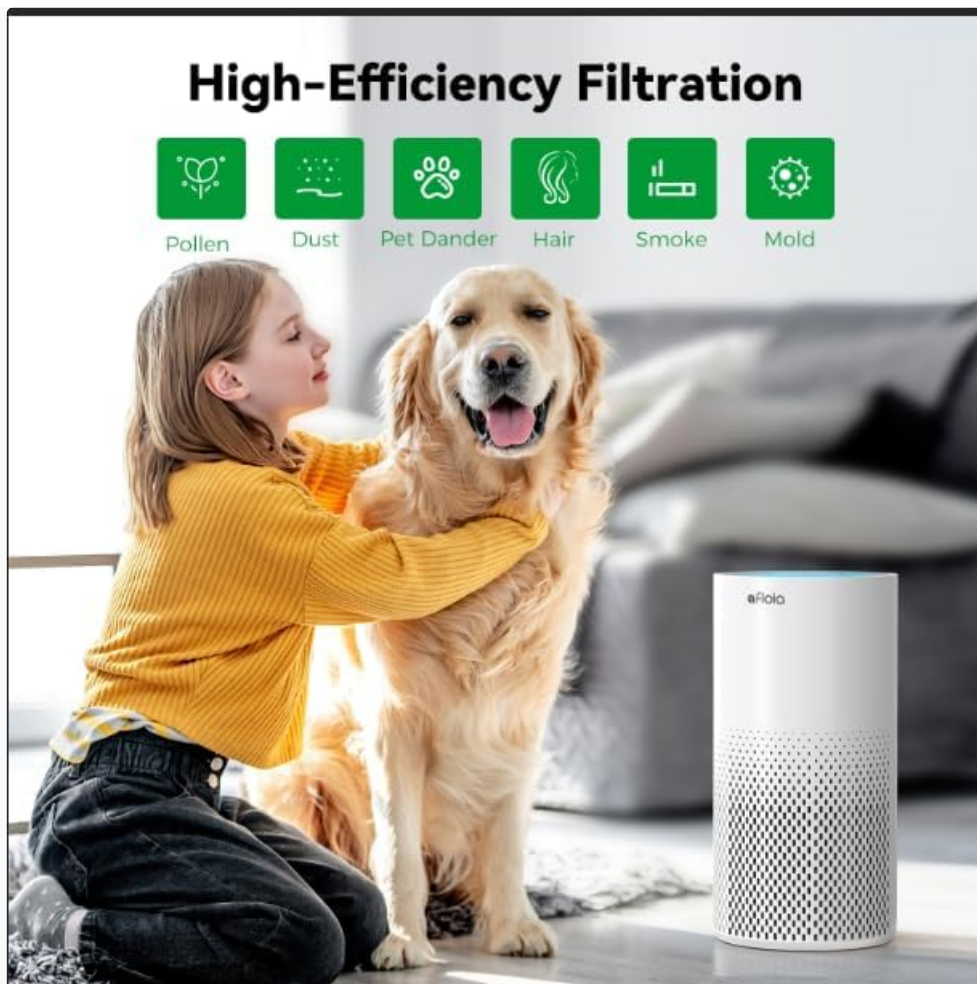


Image: Icons representing pollen, dust, pet dander, hair, smoke, and mold, indicating the types of airborne contaminants the filter addresses, shown with a child petting a dog near an air purifier.

## 4. Installation (Filter Replacement)

Follow these steps to replace the filter in your Afloia air purifier:

1. When the LED light on your air purifier begins flashing red, it indicates that the filter needs to be replaced.
2. Invert the air purifier unit.
3. Rotate the base of the unit along the “OPEN” direction to unlock and remove it.
4. Carefully remove the old, dirty filter. Ensure to remove any plastic packaging from the new filter before installation.
5. Insert the new Afloia replacement filter into the unit.
6. Replace the base and rotate it to the “CLOSE” position to secure it.
7. Turn on the air purifier.
8. Press and hold the power button until the red blinking light disappears. This resets the filter replacement indicator.

# How to Replace the Filters

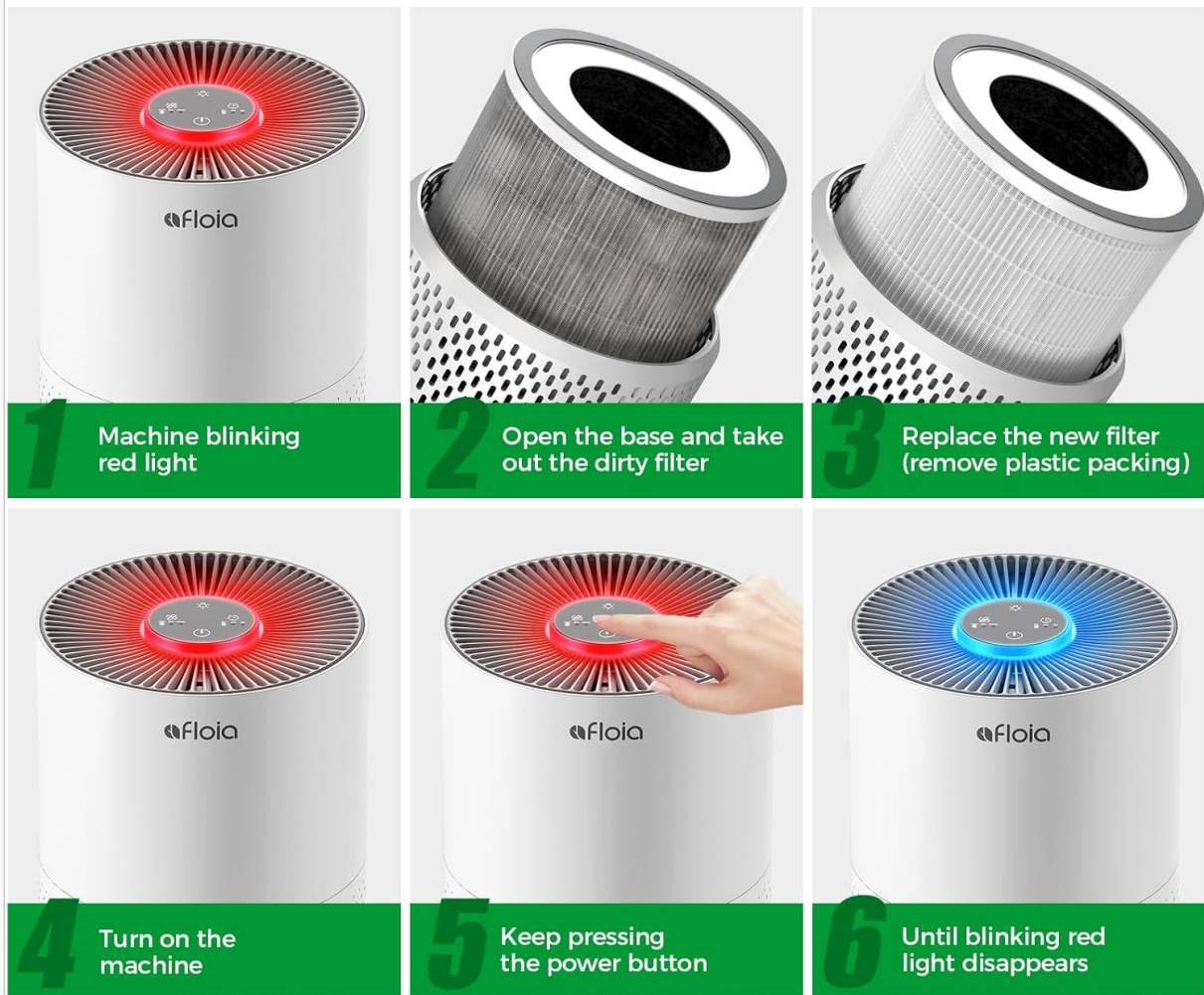


Image: A six-panel graphic illustrating the filter replacement process, from the blinking red light indicator to opening the base, replacing the filter, and resetting the indicator by pressing the power button.

## 5. Operating

Once installed, the replacement filter operates continuously within your Afloia air purifier to clean the air. The air purifier will draw in air, pass it through the multi-stage filter, and release purified air back into the room.

## 6. Maintenance

To ensure optimal performance and air quality, regular maintenance of your filter is recommended:

- **Filter Replacement:** It is recommended to replace the filter every 3-6 months. Actual replacement frequency may vary based on usage, air quality in your environment, and the presence of pets. The air purifier's red indicator light will signal when a replacement is due.
- **Washable Pre-filter:** The first layer of the pet filter is washable and removable. This pre-filter can be vacuumed to remove accumulated pet hairs and larger debris, which can extend the overall service life of the filter.

## 360° 3-LAYER FILTRATION

Remove 99.99% airborne particles 0.3 microns in size

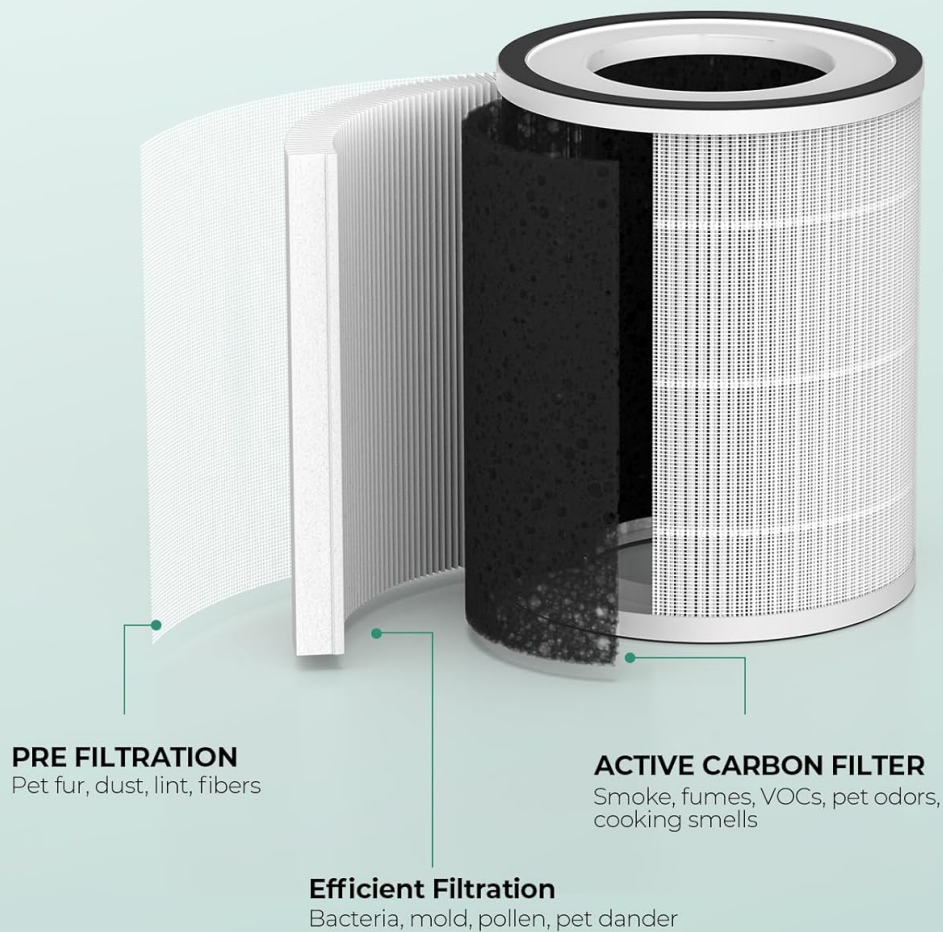


Image: A comparison graphic showing an 'OUR FILTER' (Afloia original) on the left, labeled 'Perfect Match High Quality', and 'OTHERS' on the right, labeled 'Wrong Size Poor Quality', emphasizing the importance of using genuine Afloia replacement filters.

## 7. Troubleshooting

If you encounter issues related to the filter:

- **Red Blinking Light:** If the LED light on your air purifier is blinking red, it indicates that the filter needs to be replaced. Follow the installation steps in Section 4 to replace the filter and reset the indicator.
- **Reduced Airflow or Odors:** If you notice a decrease in airflow or persistent odors before the replacement indicator activates, it may be time to replace the filter sooner than the recommended interval, especially in environments with high pollution or pet activity.

## 8. Specifications

Attribute	Specification
Product Dimensions	6.65" x 6.65" x 8.98"
Item Weight	14.7 ounces

Filtration Type	360° 3-Stage Filtration (Pre-filter, Efficient filter, Activated Carbon filter)
Compatibility	Afloia Kilo, Kilo Plus, Miro Pro, Kilo Pro Air Purifiers

## 9. Warranty and Support




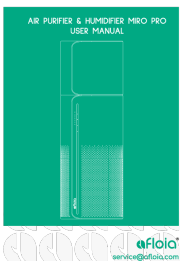
For specific warranty information regarding your Afloia replacement filter, please refer to the documentation provided with your original air purifier or contact Afloia customer service directly.

If you have any questions about the filter or the replacement process, please do not hesitate to contact Afloia customer service. You can find contact information on the official Afloia website or through their Amazon store:

[Visit the Afloia Store on Amazon](#)

© 2025 Afloia. All rights reserved.

### Related Documents - KILO

	<p><a href="#">Afloia Kilo Air Purifier User Manual</a></p> <p>Comprehensive user manual for the Afloia Kilo Air Purifier, covering features, operation, maintenance, troubleshooting, and product specifications. Learn how to set up, use, and care for your air purifier.</p>
	<p><a href="#">Afloia Kilo Air Purifier User Manual: Features, Operation, and Troubleshooting</a></p> <p>Comprehensive user manual for the Afloia Kilo Air Purifier. Learn about its features, how to replace the filter, operate the control panel, maintenance, troubleshooting, and product specifications.</p>
	<p><a href="#">Afloia Kiloplus Air Purifier User Manual</a></p> <p>Comprehensive user manual for the Afloia Kiloplus Air Purifier, detailing features, setup, operation, filter replacement, app connectivity, troubleshooting, and product specifications. Learn how to optimize your air quality with smart controls and voice commands.</p>
	<p><a href="#">Afloia Miro Pro Air Purifier &amp; Humidifier User Manual</a></p> <p>Comprehensive user manual for the Afloia Miro Pro Air Purifier &amp; Humidifier, covering features, operation, maintenance, and troubleshooting.</p>



	<p><a href="#">Afloia Kilo Pro Air Purifier &amp; Humidifier User Manual</a></p> <p>Comprehensive user manual for the Afloia Kilo Pro Air Purifier &amp; Humidifier, covering setup, operation, maintenance, troubleshooting, and specifications.</p>
	<p><a href="#">Afloia KILOPLUS Air Purifier User Manual</a></p> <p>User manual for the Afloia KILOPLUS Air Purifier, detailing features, setup, operation, maintenance, troubleshooting, and smart app connectivity for optimal air quality.</p>