

Blackview A55 Pro

Blackview A55 Pro 4G Dual SIM Unlocked Cell Phone Instruction Manual

Model: A55 Pro

1. INTRODUCTION

Welcome to the Blackview A55 Pro user manual. This guide provides essential information on how to set up, operate, maintain, and troubleshoot your new Blackview A55 Pro smartphone. Please read this manual carefully to ensure optimal performance and longevity of your device.

The Blackview A55 Pro is a 4G Dual SIM unlocked cell phone featuring Android 11, a 6.528-inch HD+ display, an Octa-core MediaTek Helio P22 processor, 4GB RAM (expandable to 7GB), 64GB ROM (expandable to 1TB), a 4780mAh battery, 13MP rear camera, 5MP front camera, and Face ID/Fingerprint Unlock capabilities.

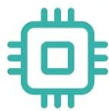
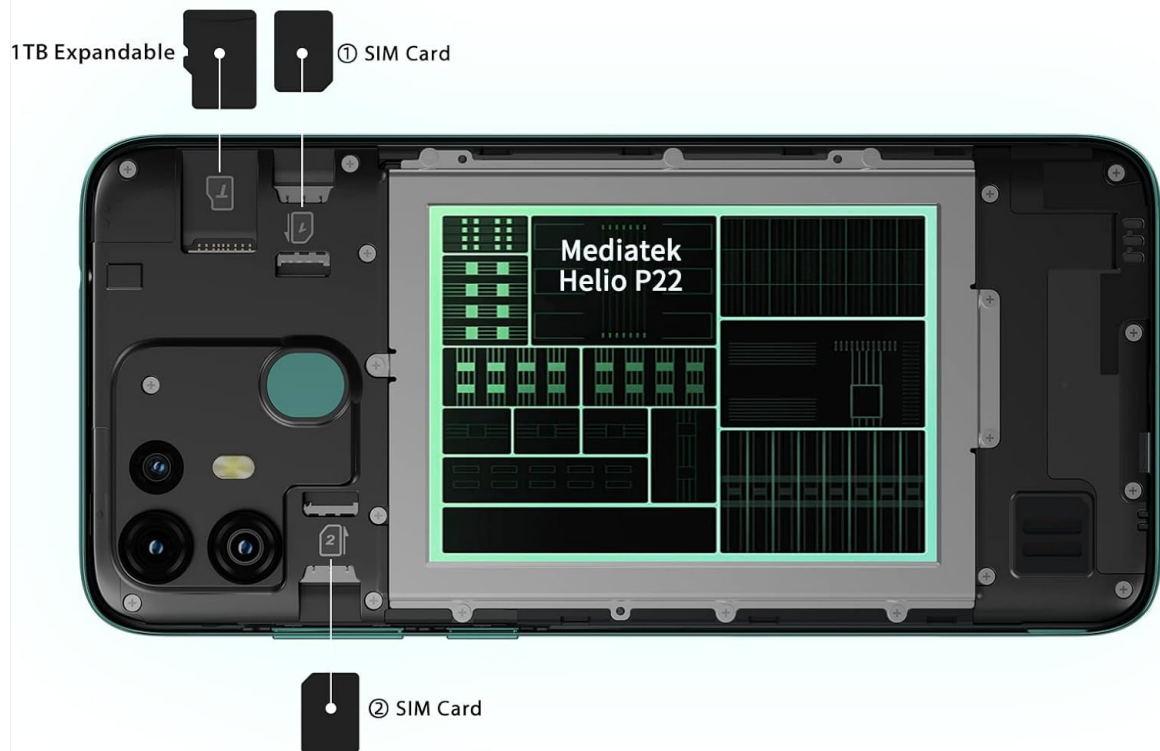
2. WHAT'S IN THE BOX

Upon opening your Blackview A55 Pro package, you should find the following items:

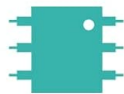
- Blackview A55 Pro Unlocked Android Phone
- Charger Adapter
- USB Cable
- User Manual (this document)
- Protective Case

Powerful CPU Octa-Core Mediatek Helio P22

Powered by a Octa-Core Mediatek Helio P22 processor, it provides a reliable performance for everyday apps.



7GB
RAM



64GB
ROM



1 TB
Expandable
Storage

Image: The Blackview A55 Pro smartphone, showcasing its design.

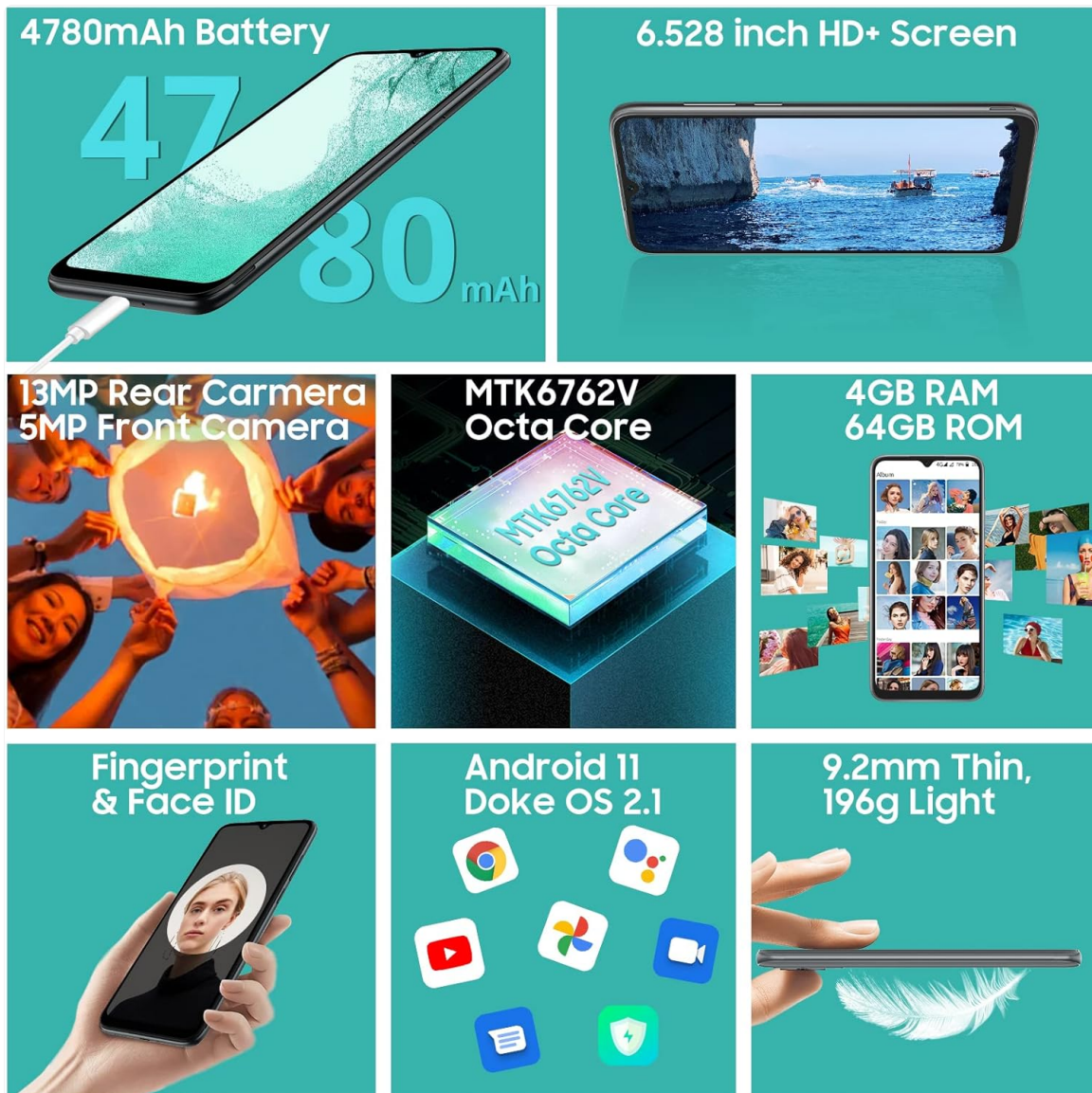


Image: All items included in the Blackview A55 Pro retail package.

Your browser does not support the video tag.

Video: An unboxing video demonstrating the contents of the Blackview A55 Pro package, including the phone, charger, USB cable, and protective case.

3. SETUP

3.1 Installing SIM and Micro-SD Cards

The Blackview A55 Pro supports two Nano SIM cards and one Micro-SD card for expandable storage up to 1TB. To install the cards:

1. Carefully remove the back cover of the phone.
2. Locate the SIM card slots and Micro-SD card slot.
3. Insert your Nano SIM cards into the designated slots.
4. Insert your Micro-SD card into its slot (if applicable).
5. Replace the back cover securely.
6. **Important:** Restart the phone after inserting the SIM card(s) to ensure proper recognition by the network.



Image: Internal view of the phone showing the placement of SIM card slots and the expandable storage slot.

3.2 Powering On/Off

- **To Power On:** Press and hold the Power button (located on the right side of the device) until the Blackview logo appears.
- **To Power Off:** Press and hold the Power button until the power options appear on the screen, then select 'Power off'.

3.3 Initial Device Setup

When you power on your Blackview A55 Pro for the first time, you will be guided through an initial setup process. This includes selecting your language, connecting to Wi-Fi, setting up your Google account, and configuring security features like fingerprint and face unlock.

4. OPERATING YOUR DEVICE

4.1 Display

The Blackview A55 Pro features a large 6.528-inch HD+ Waterdrop Screen with a resolution of 720*1600 pixels and a 20:9 aspect ratio. The display offers 400 nits brightness for clear visibility.



Image: The 6.528-inch HD+ display of the Blackview A55 Pro, showcasing its visual clarity.

4.2 Performance and Storage

Powered by an Octa-core MediaTek Helio P22 processor, the A55 Pro ensures smooth multitasking. It comes with 4GB of RAM, which can be expanded virtually to 7GB, and 64GB of internal storage. Storage can be further expanded up to 1TB using a Micro-SD card.

Blackview Enjoy Smart Life

6+ Categories	200+ Products
50+ Brand Agency	100+ Countries

As a mobile phone manufacturing company, we have a 6000 square meter factory in China, covering 10 production lines, each of which can produce 1500-2000 mobile phones per day.

Blackview
Enjoy Smart Life

Image: Visual representation of the phone's powerful CPU, RAM, ROM, and expandable storage capabilities.

4.3 Camera

Capture your moments with the 13MP rear camera and take selfies with the 5MP front camera. The dual-lens system is designed for clear image capture.



Image: Detailed view of the phone's rear and front camera modules.

4.4 Battery

The device is equipped with a 4780mAh high-capacity battery, providing extended usage for entertainment and productivity throughout the day.



Image: Information on the 4780mAh battery and its long-lasting support.

4.5 Security Features

The Blackview A55 Pro offers both Face Recognition Unlock and Fingerprint Unlock for secure and convenient access to your device. The fingerprint sensor is located on the rear of the phone.



4.6 Operating System and Features

The phone runs on Android 11 with Blackview's Doke OS 2.1, which enhances user experience with various features:

- **System Manager:** Provides all-in-one controls for trash cleaning and battery management.
- **Clone Phone:** Safely transfers private data from an old device to the new one.
- **Artistic Themes:** Offers two sets of themes with enriching icons and invigorating wallpapers.
- **Cold Room:** Freezes apps to prevent background running and save memory.
- **Screenshot/Long Screenshot:** Easily capture and edit screenshots.
- **Dual-window Entertainment:** View different content on the same screen simultaneously.

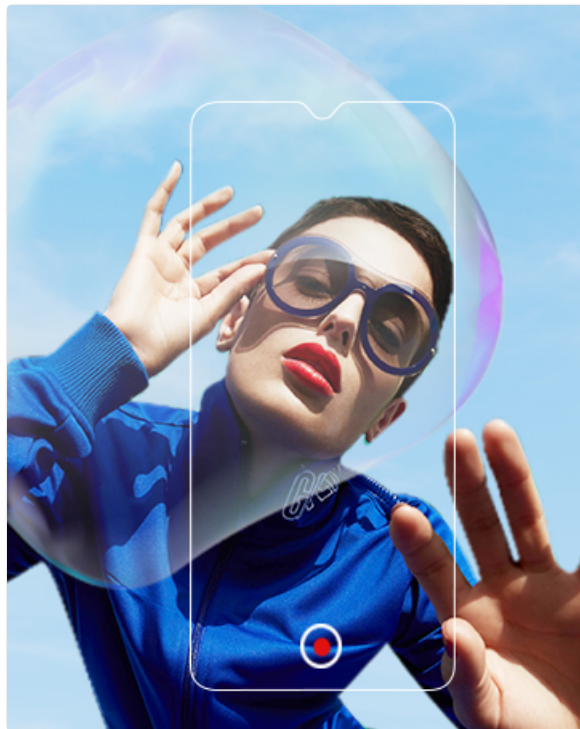


Image: Examples of Doke OS 2.1 features in action.

4.7 Navigation System

The Blackview A55 Pro integrates a 4-in-1 navigation system, supporting GPS, GLONASS, Beidou, and Galileo for faster and more accurate positioning.

5. MAINTENANCE

To ensure your Blackview A55 Pro remains in optimal condition, follow these maintenance guidelines:

- **Cleaning:** Use a soft, lint-free cloth to clean the screen and body of the phone. Avoid harsh chemicals or abrasive materials.
- **Software Updates:** Regularly check for and install system updates to benefit from the latest features, security patches, and performance improvements. You can usually find this option in *Settings > System > System Update*
- **Battery Care:** Avoid extreme temperatures. Do not let the battery completely drain frequently. For long-term storage, charge the battery to around 50%.

- **Storage Management:** Periodically clear unnecessary files and uninstall unused apps to free up storage space and maintain device speed.
- **Protection:** Use the provided protective case to guard against drops and scratches.

6. TROUBLESHOOTING

If you encounter issues with your Blackview A55 Pro, try the following solutions:

- **Device Not Turning On:** Ensure the battery is charged. Connect the phone to the charger and wait a few minutes before attempting to power on again.
- **Apps Crashing/Freezing:** Close the problematic app and reopen it. If the issue persists, clear the app's cache and data (*Settings > Apps > [App Name] > Storage > Clear Cache/Clear Data*). As a last resort, uninstall and reinstall the app.
- **Poor Network Connectivity:** Check if your SIM card is properly inserted. Ensure you are within network coverage. Try restarting your device. Verify your network settings (*Settings > Network & internet > Mobile network*).
- **Battery Draining Quickly:** Reduce screen brightness, disable unused features like Wi-Fi, Bluetooth, and GPS when not needed. Close background apps. Check battery usage in *Settings > Battery* to identify power-hungry apps.
- **Fingerprint/Face Unlock Not Working:** Ensure your fingers are clean and dry for fingerprint unlock. For face unlock, ensure adequate lighting and that your face is clearly visible to the front camera. Re-register your fingerprint or face data if necessary.
- **Device Slow Performance:** Free up storage space, close unnecessary background apps, and restart your device. Consider using the 'Cold Room' feature in Doke OS 2.1 to manage apps.

If these steps do not resolve your issue, please contact Blackview customer support for further assistance.

7. SPECIFICATIONS

Feature	Specification
Model Name	Blackview A55 Pro
Operating System	Android 11.0 (Doke OS 2.1)
Processor	Octa-core MediaTek Helio P22
RAM	4 GB (Expandable to 7 GB)
Internal Storage	64 GB
Expandable Storage	Up to 1 TB with Micro-SD card

Feature	Specification
Screen Size	6.528 Inches
Resolution	720 x 1600 (HD+)
Rear Camera	13 MP
Front Camera	5 MP
Battery Capacity	4780 mAh
Wireless Carrier Support	T-Mobile (Does NOT support AT&T, Cricket Wireless, Verizon, Sprint, Boost Mobile, Straight Talk, U.S.Cellular)
Cellular Technology	4G (GSM: 850/900/1800/1900, WCDMA: B2/B4/B5/B8, FDD: B2/B3/B4/B5/B7/B12/B13/B17/B25/B26/B66, TDD: B41)
Connectivity Technologies	Wi-Fi, Bluetooth
Navigation System	GPS, GLONASS, Beidou, Galileo
Security Features	Face ID, Fingerprint Unlock
Dimensions	6.49 x 3.02 x 0.36 inches (164.75 x 76.7 x 9.2 mm)
Weight	14 ounces (196g)
Color	Black (Other colors may be available)

8. WARRANTY AND SUPPORT

Your Blackview A55 Pro comes with a standard manufacturer's warranty. For detailed warranty information, please refer to the warranty card included in your product packaging or visit the official Blackview website. For technical support, troubleshooting assistance, or service inquiries, please contact Blackview customer service through their official channels.

Important Note on Network Compatibility: The Blackview A55 Pro smartphone is NOT compatible with AT&T SIM cards or Cricket Wireless SIM cards. It DOES NOT work with CDMA Network Carriers such as Verizon, Sprint, Boost Mobile, Straight Talk, or U.S.Cellular. Please ensure your carrier is supported before use.