

## Lake Effect Pools 91224526

# Lake Effect Pools Testudo 12 ft x 24 ft Oval Above Ground Swimming Pool Instruction Manual

## 1. IMPORTANT SAFETY INFORMATION

---

Please read this entire manual carefully before installing, operating, or performing any maintenance on your Lake Effect Pools Testudo above ground swimming pool. Failure to follow these instructions can result in serious injury, property damage, or death. Keep this manual in a safe place for future reference.

### General Safety Precautions:

- Adult supervision is required at all times when the pool is in use.
- Ensure proper fencing and safety barriers are in place around the pool area as per local regulations.
- Never dive or jump into an above ground pool. Serious injury or death may result.
- Keep all electrical devices away from the pool.
- Do not use the pool if any part is damaged or not properly assembled.
- Always maintain proper water chemistry to ensure a safe and healthy swimming environment.

## 2. PRODUCT OVERVIEW

---

The Lake Effect Pools Testudo 12 ft x 24 ft Oval Above Ground Swimming Pool is designed for durability and ease of use, providing a reliable swimming solution for your backyard. This pool features resin-protected steel-sided walls and is built to remain in place year-round.

### Key Features:

- **Resin Coated Steel Walls:** Super strong steel walls are hot-dip galvanized and resin-coated both inside and out for enhanced protection against rust and maximum longevity.

- **Traditional 25 Gauge Overlap Liner:** Provides a clean aesthetic and is hand-folded to minimize creasing and wrinkling.
- **All-Year Ready Design:** Engineered for year-round installation, featuring exact-fit components that prevent corrosion and interlocking stabilizer rails for secure liner placement.
- **Widemouth Skimmer:** Included for efficient collection of leaves and debris, featuring a built-in skimmer basket and heavy-duty construction.

### Included Components:

- Steel Pool Wall (Resin Protected)
- 25 Gauge Overlap Liner
- Widemouth Skimmer
- Top Ledges and Uprights
- Bottom Rail System
- Stainless Steel Nuts, Bolts, and Fasteners



Image: Lake Effect Pools Testudo 12 ft x 24 ft Oval Above Ground Swimming Pool.



# BUILT FOR THE PERFECT BACKYARD FIT

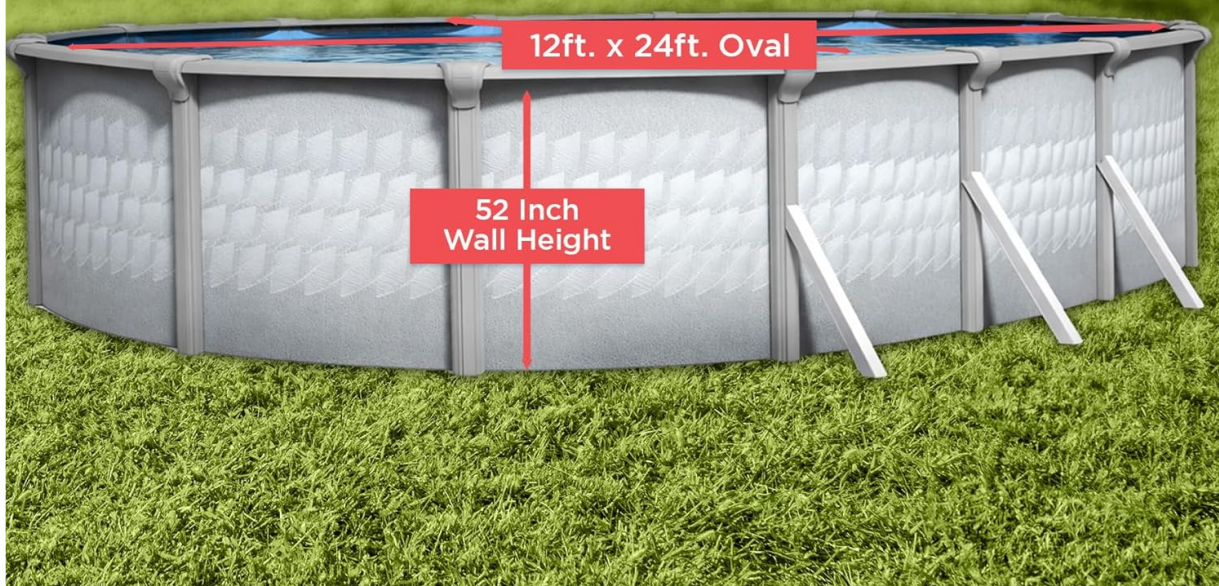


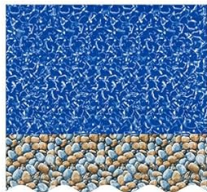
Image: Diagram showing the dimensions of the 12 ft x 24 ft oval pool with a 52 inch wall height.



# EVERYTHING YOU NEED TO GET STARTED!



## POOL PACKAGE INCLUDES



 **Premium Printed  
Vinyl Liner**



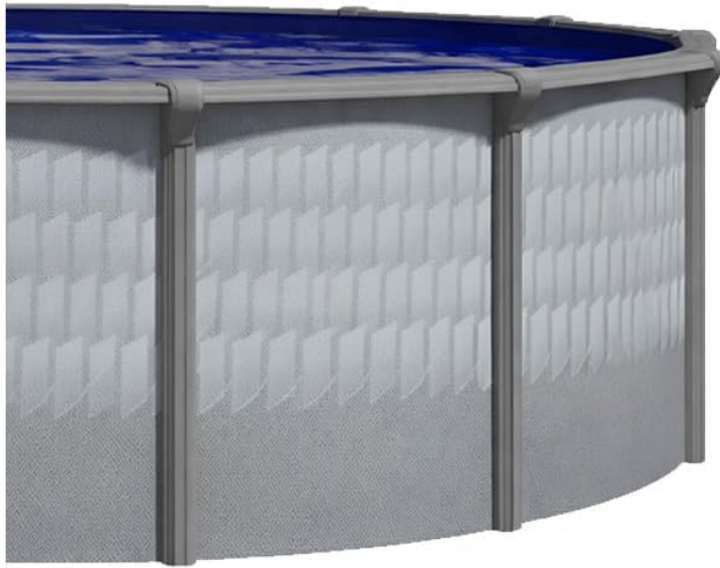
 **Wide-Mouth  
Wall Skimmer**

Image: Pool package showing the included premium printed vinyl liner and wide-mouth wall skimmer.



# TESTUDO

## Oval Above Ground Pool



**52" Wall Height**



**Resin Wall Protection**



**7" Steel Uprights**



**7" Steel Top Rail**



**10 Year Lifespan**

Image: Key features of the Testudo Oval Above Ground Pool, including dimensions and material properties.

### 3. SETUP AND INSTALLATION

Proper installation is crucial for the longevity and safety of your above ground pool. It is highly recommended to consult the detailed installation guide provided with your pool kit for step-by-step instructions. Below are general steps and considerations.

#### Site Preparation:

- Choose a level, firm area free from overhead power lines, underground pipes, and sharp objects.
- Ensure adequate drainage away from the pool area.
- Clear the area of all debris, rocks, and roots.

#### Foundation System:

A stable foundation is essential. The pool utilizes an included bottom rail system that locks the structure in place. Consider using patio blocks and a sand base to prevent sinking and shifting, ensuring a smooth, level surface.



# STRENGTH STARTS BELOW THE SURFACE



Image: Diagram illustrating the pool's foundation system, including the bottom rail, patio blocks, and sand base.

### Wall Assembly:

Assemble the resin-protected steel wall according to the specific instructions. The exact-fit components ensure a precise and secure build. Use the provided stainless steel nuts, bolts, and fasteners to prevent rust.

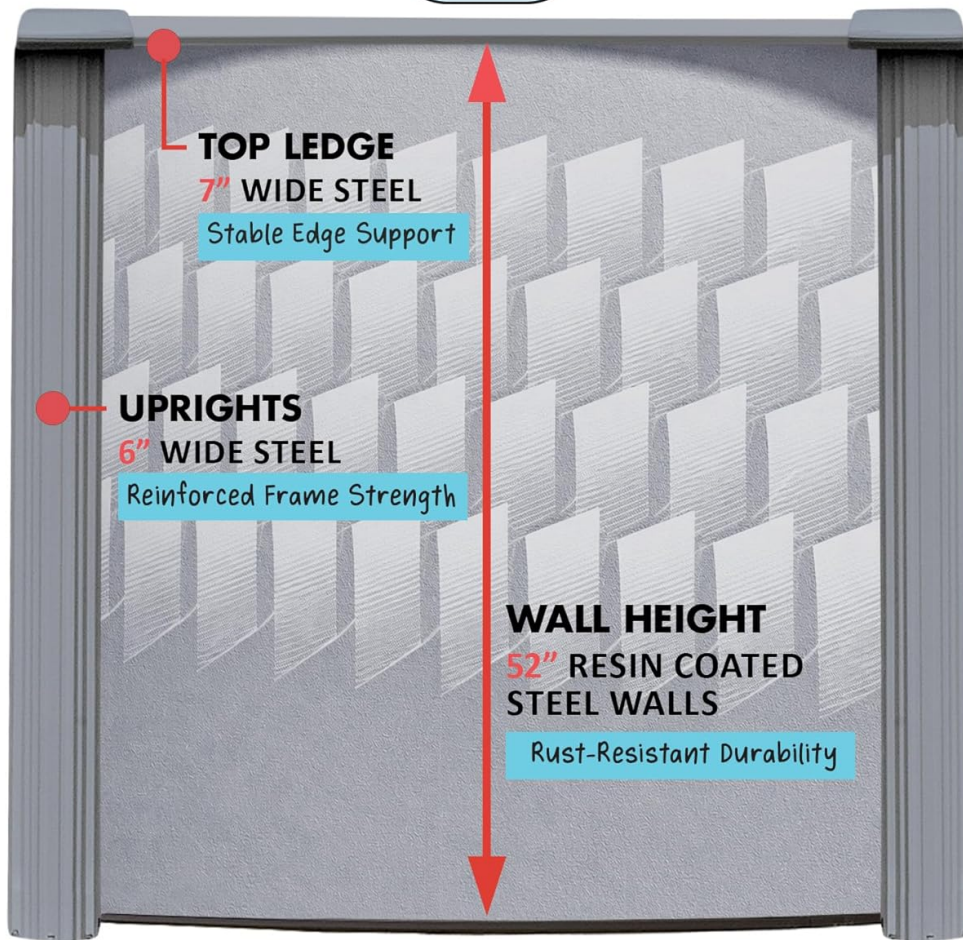


Image: Detailed view of the pool wall construction, highlighting the top ledge, uprights, and wall height.



Image: Close-up of the resin-coated galvanized steel pool wall material.

### Liner and Skimmer Installation:

Install the 25 gauge overlap liner, ensuring it is smooth and free of wrinkles. The interlocking stabilizer rails and coping strips fit tightly over the liner and pool wall, securing it in place. Install the widemouth skimmer according to the instructions, ensuring a watertight seal.



- ✓ 100% Virgin Vinyl
- ✓ Double Welded Seams
- ✓ Heat Bonded Construction



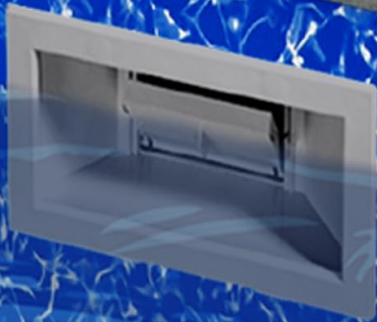
Manufacturing  
**Pool Liners**

FOR  
**50+**  
YEARS

Image: Close-up of the pool liner, detailing its construction and strength.



# POOL PACKAGE INCLUDES WIDE-MOUTH SKIMMER



- ✓ **Wide Opening Intake**  
Collects more leaves and debris
- ✓ **Built In Skimmer Basket**  
Easy to clean debris collection
- ✓ **Heavy-Duty Construction**  
Durable long lasting performance

Image: Diagram of the wide-mouth skimmer, highlighting its features.

## 4. OPERATING INSTRUCTIONS

### Filling the Pool:

Once the pool structure and liner are fully installed, begin filling the pool with water. As the water level rises, smooth out any remaining wrinkles in the liner towards the walls. Stop filling when the water reaches the recommended operating level, typically halfway up the skimmer opening.

### Water Chemistry:

Maintaining proper water chemistry is vital for swimmer safety and pool longevity. Regularly test your pool water for pH, alkalinity, calcium hardness, and sanitizer levels (e.g., chlorine). Adjust chemicals as needed according to manufacturer guidelines and local health department recommendations.

### Skimmer Operation:

The widemouth skimmer is designed to remove surface debris. Ensure the skimmer basket is clean and properly seated. The water level should be maintained to allow efficient skimming action.

## 5. MAINTENANCE

---

Regular maintenance will extend the life of your pool and ensure a pleasant swimming experience.

### Daily/Weekly Maintenance:

- **Skim Surface:** Remove leaves and debris from the water surface using a skimmer net.
- **Empty Skimmer Basket:** Regularly clean the skimmer basket to ensure proper water flow.
- **Vacuum Pool:** Vacuum the pool floor to remove settled debris.
- **Brush Walls:** Brush the pool walls and floor to prevent algae growth.
- **Test Water:** Perform daily or weekly water tests and adjust chemicals as necessary.
- **Check Filter:** Backwash or clean your pool filter as recommended by its manufacturer.

### Seasonal Maintenance (Winterization):

As an all-year ready pool, proper winterization is essential to protect your investment during colder months. Consult a pool professional or your detailed pool manual for specific winterization procedures, which typically include:

- Balancing water chemistry.
- Lowering the water level.
- Draining and storing pumps, filters, and heaters.
- Adding winterizing chemicals.
- Covering the pool with a winter cover.

## 6. TROUBLESHOOTING

---

This section addresses common issues you might encounter with your above ground pool. For complex problems, always consult a qualified pool technician.

### Common Issues:

- **Cloudy Water:** Often caused by improper filtration, unbalanced chemicals, or high organic load. Check filter, test water, and shock treat if necessary.
- **Algae Growth:** Indication of insufficient sanitizer or poor circulation. Brush pool, shock treat, and ensure filter is running adequately.
- **Water Loss:** Check for leaks in the liner, skimmer, or plumbing connections. Small leaks in the liner may be repairable with a patch kit.
- **Pump/Filter Malfunction:** Refer to the separate instruction manuals for your specific pump and filter system. Ensure power supply is connected and baskets are clear.

If you are unable to resolve an issue, contact Lake Effect Pools customer support or a local pool professional.

## 7. SPECIFICATIONS

---

Specification	Detail
---------------	--------

Specification	Detail
Brand	Lake Effect Pools
Model Name	Testudo
Model Number	91224526
Shape	Oval
Product Dimensions (L x W x H)	288"L x 144"W x 52"H (12 ft x 24 ft x 52 inches)
Capacity	Approximately 6700 Gallons
Wall Material	Resin Protected Steel
Liner Gauge	25 Gauge Overlap Liner
Indoor/Outdoor Usage	Outdoor
Required Assembly	Yes
Estimated Lifespan	10 Years
UPC	794020185600

## 8. WARRANTY AND SUPPORT

### Warranty Information:

Lake Effect Pools products are manufactured to high standards and are designed for durability. This Testudo pool is designed for a 10-year lifespan. For specific warranty details regarding your pool components (e.g., steel wall, liner, skimmer), please refer to the warranty documentation included with your purchase or contact Lake Effect Pools directly.

### Customer Support:

If you have any questions, require assistance with installation, or need to troubleshoot an issue not covered in this manual, please contact Lake Effect Pools customer support. You can typically find contact information on the manufacturer's website or on your purchase documentation.

**Online Resources:** Visit the [Lake Effect Pools Store on Amazon](#) for additional product information and support.