



Manuals.plus /

› EasyAcc /

› EasyAcc Bluetooth Keyboard User Manual

## EasyAcc K02

# EasyAcc K02 Wireless Bluetooth Keyboard User Manual

Model: K02 | Brand: EasyAcc

## INTRODUCTION

Welcome to the EasyAcc K02 Wireless Bluetooth Keyboard user manual. This guide provides detailed instructions for setting up, operating, maintaining, and troubleshooting your new keyboard. Designed for versatility, the EasyAcc K02 offers seamless connectivity across multiple operating systems and features a comfortable QWERTZ layout with customizable backlighting.

## SETUP

### Package Contents

- EasyAcc K02 Wireless Bluetooth Keyboard
- USB Type-C Charging Cable
- User Manual (this document)

### Charging the Keyboard

Before first use, fully charge the keyboard.

# Charging Type-C port

Integrated rechargeable battery

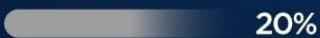


30 Min Type-C



60%

30 Min Ordinary



20%



Image: The EasyAcc K02 keyboard showing its Type-C charging port and indicating integrated rechargeable battery. A progress bar illustrates charging efficiency: 60% in 30 minutes with Type-C versus 20% in 30 minutes with ordinary charging.

1. Connect the provided USB Type-C cable to the keyboard's charging port.
2. Connect the other end of the cable to a USB power source (e.g., computer USB port, USB wall adapter).
3. The charging indicator light will illuminate. It will turn off or change color when fully charged.

## Pairing with Your Device

The EasyAcc K02 keyboard supports Bluetooth connectivity with Windows, Android, iOS, and Mac OS devices.

# System compatibility

## Smart Bluetooth



Android



Windows



ios

Image: The EasyAcc K02 keyboard highlighting the function keys for system compatibility: Fn+A for iOS, Fn+S for Windows, and Fn+D for Android. Below the keyboard, icons for Android, Windows, and iOS are displayed, indicating broad compatibility.

1. Turn on the keyboard using the power switch located on the side.
2. Press the **Fn** key simultaneously with the corresponding system key:
  - **Fn + A** for iOS devices
  - **Fn + S** for Windows devices
  - **Fn + D** for Android devices
3. Activate Bluetooth on your device (tablet, smartphone, computer).
4. Search for available Bluetooth devices. The keyboard will appear as "EasyAcc Keyboard" or similar.
5. Select the keyboard to pair. If prompted, enter the pairing code displayed on your screen using the

keyboard and press **Enter**.

6. Once paired, the Bluetooth indicator light on the keyboard will turn off or become steady.

## OPERATING INSTRUCTIONS

### Basic Operation

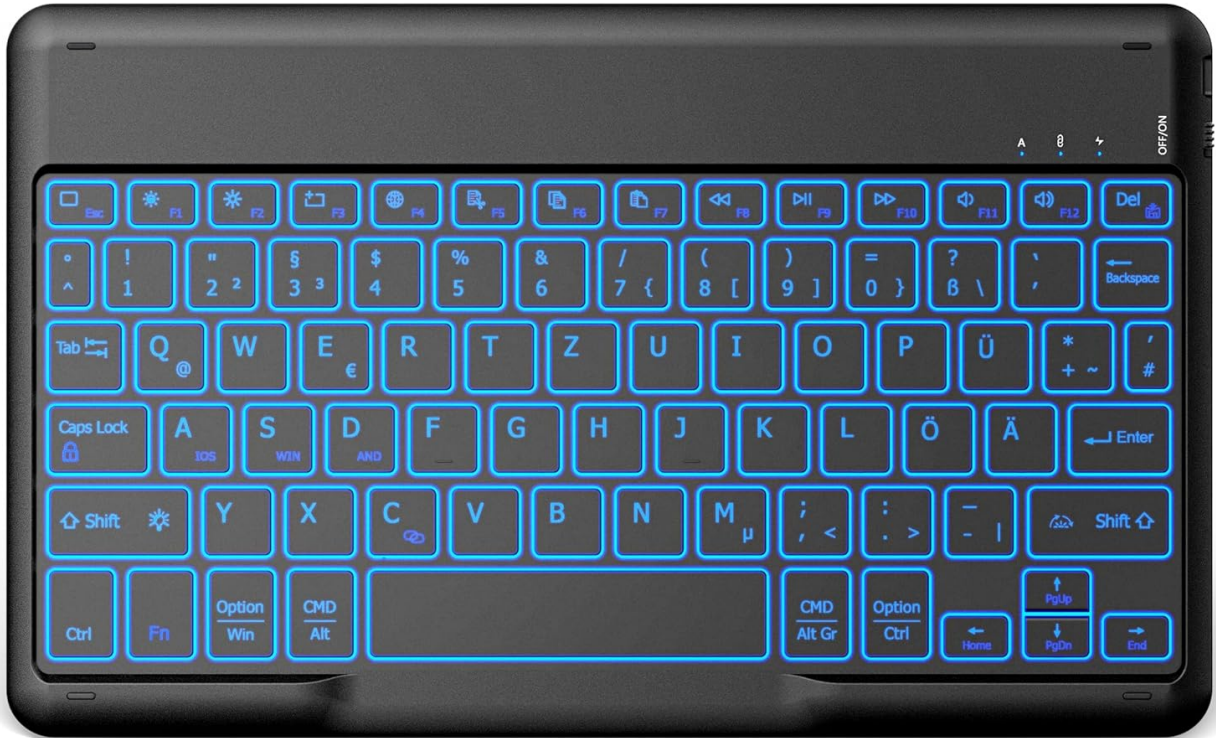


Image: A top-down view of the EasyAcc K02 Wireless Bluetooth Keyboard, showcasing its QWERTZ layout with illuminated blue backlighting. The keyboard features standard keys, function keys, and multimedia shortcuts.

The keyboard features a standard QWERTZ layout with 78 keys.

### Backlight Control

The keyboard offers 7 different backlight colors and 3 brightness levels.



# 7 luminous atmospheres

colors of backlight for your choice



Image: The EasyAcc K02 keyboard displayed with a vibrant color spectrum, illustrating the "7 luminous atmospheres" available for its backlight. The image emphasizes the customizable lighting options.

- To change backlight color: Press **Fn + RGB** (or a dedicated backlight key if present, refer to keyboard legends).
- To adjust brightness: Press **Fn + Light icon** (or similar key) repeatedly to cycle through brightness levels.
- To turn backlight off: Continue cycling brightness levels until the backlight turns off.

## Multimedia and Shortcut Keys

The keyboard includes dedicated function keys for multimedia control and system shortcuts. These typically require pressing the **Fn** key in combination with the desired function key (F1-F12).

| Key Combination       | Function  |
|-----------------------|---|
| <b>Fn + F1</b>        | Home  |
| <b>Fn + F2</b>        | Search  |
| <b>Fn + F3</b>        | Select All  |
| <b>Fn + F4</b>        | Copy  |
| <b>Fn + F5</b>        | Paste   |
| <b>Fn + F6</b>        | Cut   |
| <b>Fn + F7</b>        | Previous Track                                      |
| <b>Fn + F8</b>        | Play/Pause  |
| <b>Fn + F9</b>        | Next Track  |
| <b>Fn + F10</b>       | Mute  |
| <b>Fn + F11</b>       | Volume Down   |
| <b>Fn + F12</b>       | Volume Up   |
| <b>Fn + Esc</b>       | Lock Screen   |
| <b>Fn + Caps Lock</b> | Toggle Caps Lock Indicator                          |
| <b>Fn + Spacebar</b>  | Toggle Backlight On/Off (if RGB key is not present) |

## Portability and Usage Scenarios

The keyboard is ultra-thin (6.8mm) and lightweight (368g), making it highly portable.

# Ultra-thin and **portable**

Take it anywhere you want

**6.8mm**  
Thickness

**368g**  
Weight



Image: The EasyAcc K02 keyboard viewed from the side, emphasizing its ultra-thin profile (6.8mm thickness) and lightweight design (368g weight), highlighting its portability.



# Work and play at the same time

Home

Office



Image: A split image showing the EasyAcc K02 keyboard being used in two different environments: a home setting with a large curved monitor, and an office setting with a laptop and mouse, illustrating its versatility for both work and leisure.



# Lightweight keyboard anywhere

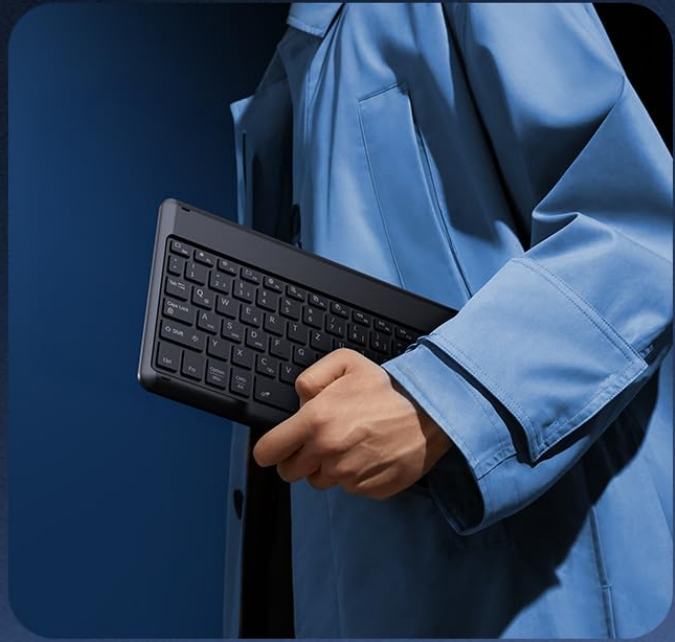


Image: A two-part image demonstrating the portability of the EasyAcc K02 keyboard. The top part shows a person carrying the keyboard in a bag, while the bottom part shows the keyboard set up with a tablet on a desk, emphasizing its "lightweight keyboard anywhere" feature.

Its compact size allows for easy transport in a backpack, briefcase, or suitcase, making it ideal for both work and play on the go.

## MAINTENANCE

### Care and Cleaning

- Keep the keyboard away from liquids and excessive moisture.
- Avoid extreme temperatures.
- Clean the keyboard with a soft, dry, lint-free cloth. For stubborn dirt, slightly dampen the cloth with water or a mild cleaning solution.
- Do not use abrasive cleaners or solvents.
- Store the keyboard in a clean, dry place when not in use.

## **TROUBLESHOOTING**

### **Common Issues and Solutions**

#### **Keyboard Not Connecting**

- Ensure the keyboard is charged.
- Make sure Bluetooth is enabled on your device.
- Check if the keyboard is in pairing mode (Bluetooth indicator blinking). If not, re-enter pairing mode (Fn + A/S/D).
- Delete the keyboard from your device's Bluetooth list and try pairing again.
- Restart both the keyboard and your device.
- Ensure your device's operating system is compatible (iOS, Android, Windows, Mac OS).

#### **Keys Not Responding**

- Check battery level and charge if necessary.
- Re-establish the Bluetooth connection.
- Clean around the affected keys to remove any debris.

#### **Backlight Not Working**

- Ensure the keyboard is charged.
- Try cycling through backlight modes and brightness levels using the Fn + RGB/Light key combinations.

#### **Short Battery Life**

- Reduce backlight brightness or turn it off when not needed.
- Ensure the keyboard is fully charged before use.
- Turn off the keyboard when not in use to conserve battery.

## **SPECIFICATIONS**

### **Product Specifications**

| Feature                      | Detail  |
|------------------------------|---|
| Brand                        | EasyAcc   |
| Model Number                 | K02   |
| Connectivity                 | Bluetooth   |
| Compatible Operating Systems | iOS, Android, Windows, Mac OS                               |
| Keyboard Layout              | QWERTZ (German)   |
| Number of Keys               | 78  |
| Special Features             | Backlit (7 colors, 3 brightness levels), Multimedia Hotkeys |
| Color                        | Black   |
| Dimensions (L x W x H)       | 24.8 cm x 15 cm x 0.6 cm                                    |
| Weight                       | 368g  |
| Charging Port                | USB Type-C  |

## WARRANTY AND SUPPORT

### Warranty Information

EasyAcc products typically come with a standard manufacturer's warranty. Please refer to the warranty card included with your purchase or visit the official EasyAcc website for detailed warranty terms and conditions.

### Customer Support

For further assistance, technical support, or warranty claims, please contact EasyAcc customer service.

- **Website:** [www.easyacc.com](http://www.easyacc.com)
- **Email:** [support@easyacc.com](mailto:support@easyacc.com)
- **Phone:** Refer to your product packaging or EasyAcc website for regional contact numbers.

When contacting support, please have your product model (K02) and purchase information ready.