

## EMKE SFTR1640X1W-DRVC

# EMKE SFTR1640X1W-DRVC Bathroom Radiator User Manual

Model: SFTR1640X1W-DRVC | Brand: EMKE

## 1. INTRODUCTION

This manual provides detailed instructions for the installation, operation, and maintenance of your EMKE SFTR1640X1W-DRVC hot water bathroom radiator. Please read these instructions carefully before installation and use to ensure safe and efficient operation of the product. Keep this manual for future reference.

## 2. SAFETY INSTRUCTIONS

- Ensure the radiator is installed by a qualified professional in accordance with local building and plumbing regulations.
- Do not cover the radiator with flammable materials.
- Keep children and pets away from the hot surface of the radiator to prevent burns.
- Regularly check for any signs of leaks or damage. If detected, turn off the heating system and contact a professional.
- The radiator is designed for hot water central heating systems only. Do not connect to other types of heating systems.
- Do not use abrasive cleaners or solvents on the radiator surface, as this may damage the finish.

## 3. PACKAGE CONTENTS

Please check that all components are present and undamaged before proceeding with installation.

- EMKE Bathroom Radiator (1 unit)
- Towel Rail (if applicable to model)
- Mounting Set (4 blind plugs, 4 wall plugs, 4 long screws, 4 small screws, 4 rubber rings)
- Installation Instructions



## Hohe Wärmeleitfähigkeit

### Wärme den Raum auf

Der Badheizkörper trocknet die Handtücher und bringt auch genügend Wärme ins Bad.

Figure 1: Included accessories and packaging details. Note: Valve is not included.

## 4. SETUP AND INSTALLATION

---

The EMKE bathroom radiator is designed for flexible installation. It can be mounted with the connections on either the left or right side.

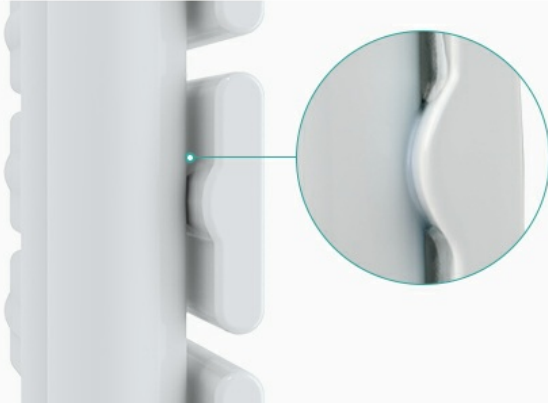
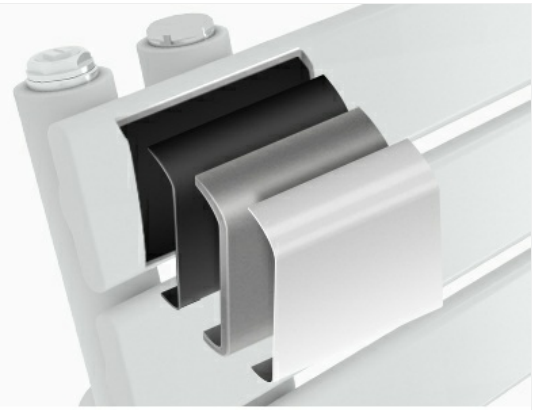
### 4.1 Wall Mounting

1. **Prepare the Wall:** Choose a suitable location on a solid wall. Ensure there are no hidden pipes or electrical wires.
2. **Mark Drilling Points:** Use the provided mounting brackets and a spirit level to mark the drilling points on the wall.
3. **Drill Holes:** Drill holes of appropriate size and depth for the wall plugs. Insert the wall plugs.
4. **Attach Brackets:** Secure the mounting brackets to the wall using the long screws.
5. **Mount Radiator:** Carefully lift the radiator and attach it to the wall brackets. Ensure it is securely seated.
6. **Adjust Wall Distance:** The wall distance is adjustable between 99-115 mm, allowing for optimal positioning.

## Hochwertige Materialien

### SPCC-Stahl + Umweltschutzbeschichtung

Der Handtuchhalter ist wasserdicht, rostfrei und korrosionsbeständig, was ihn langlebiger macht.



## Fortgeschrittene Technologie

### Überlappschweißtechnik

Fortschrittliche Schweißtechnologie macht die Nähte schöner und fester.

Figure 2: Adjustable wall distance and construction details.

## 4.2 Plumbing Connection

- The radiator features a universal G1/2" connection thread with a 50 mm connection distance.
- The radiator can be installed with the connections on the left or right side by simply inverting the unit.
- **Important:** A valve is not included with this product. Please acquire a suitable valve according to your specific system requirements.
- Connect the radiator to your hot water central heating system. Ensure all connections are sealed properly to prevent leaks.

## Breites Flachrohr

### Schnelles Trocknen

Das flache und aufgeweitete Rohr vergrößert die Kontaktfläche mit dem Handtuch und die Trocknung erfolgt schneller.

60mm



## Einstellbarer Abstand zur Wand

### 16mm einstellbarer Abstand

Der einstellbare Wandabstand erleichtert die Installation und Nutzung.

Figure 3: Flexible connection options (left or right) and universal G1/2" thread.

## 5. OPERATING INSTRUCTIONS

Once installed and connected to your hot water central heating system, the EMKE radiator will provide efficient heat distribution.

- **Initial Start-up:** After installation, slowly fill the heating system with water and bleed any air from the radiator using the bleed valve (if present on your valve).
- **Heat Distribution:** The flat steel design ensures uniform and efficient heat distribution, quickly warming your bathroom and drying towels.
- **Temperature Control:** Use your heating system's thermostat or the radiator valve (not included) to control the heat output. The recommended inlet/outlet water temperature is 75°C/65°C.



Figure 4: Illustration of heat distribution from the radiator.

## 6. MAINTENANCE

- **Cleaning:** Clean the radiator regularly with a soft, damp cloth. For stubborn dirt, use a mild, non-abrasive cleaning agent. Avoid harsh chemicals or abrasive materials that could damage the finish.
- **Bleeding:** Periodically bleed air from the radiator to maintain optimal heating efficiency. Air trapped in the system can reduce heat output.
- **Inspection:** Annually inspect all connections for any signs of leaks or corrosion. The high-quality steel and eco-friendly coating are designed to protect against rust and water leaks, making it suitable for humid environments.

## 7. TROUBLESHOOTING

Problem	Possible Cause	Solution
Radiator not heating up.	Air trapped in the system; heating system off; faulty valve.	Bleed the radiator; check heating system power; inspect/replace valve.
Uneven heating.	Air trapped in the system.	Bleed the radiator thoroughly.
Water leaks from connections.	Loose connections; damaged seals.	Tighten connections; replace seals. If problem persists, contact a professional.
Noise from radiator.	Air in the system; water flow issues.	Bleed the radiator; check system pressure.

## 8. SPECIFICATIONS

Feature	Detail
---------	--------

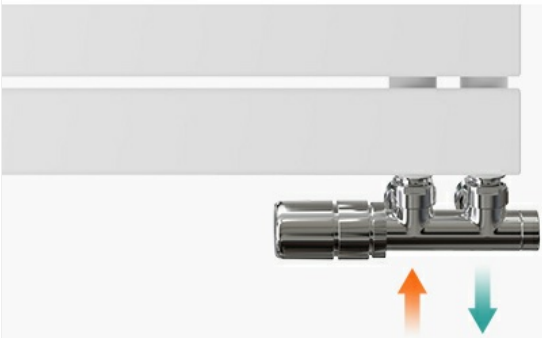
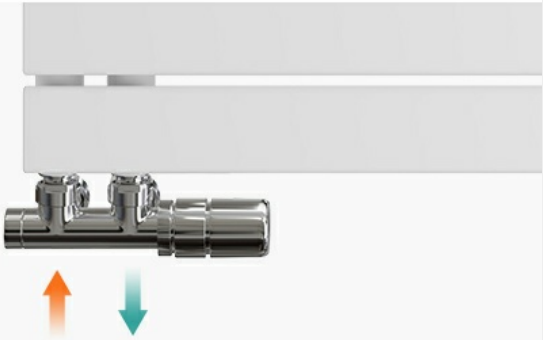
Feature	Detail
Model Number	SFTR1640X1W-DRVC
Dimensions (Height x Width)	1599 x 400 mm
Color	White
Material	High-quality Steel (SPCC) with eco-friendly coating
Power Output	684 W
Heating Type	Hot Water Central Heating
Recommended Application Area	Up to 7 m²
Connector Thread	G1/2"
Connection Distance	50 mm
Adjustable Wall Distance	99 - 115 mm
Recommended Water Temperature (Inlet/Outlet)	75°C / 65°C
Weight	16.2 kg

## Flexible Installation

### Seitenanschluss Links 1

Anschlussgewinde: G1/2"  
Anschlussmaß: 50mm

\*Enthält kein Ventil



### Seitenanschluss Rechts 2

Er kann umgedreht werden,  
sodass sich der Anschluss auf  
der rechten Seite befindet.

Achtung: Das Ventil muss unten angeschlossen werden!

Figure 5: Detailed technical specifications and dimensions.

## 9. WARRANTY AND SUPPORT

EMKE is committed to providing high-quality products and excellent customer service.

- **Warranty:** This product comes with a 2-year repair service.
- **Return Policy:** A 14-day return policy is offered for your peace of mind.
- **Customer Support:** For any questions, technical assistance, or warranty claims, please contact EMKE customer service through your purchase platform or the official EMKE website.