

Manuals+

[Q & A](#) | [Deep Search](#) | [Upload](#)

manuals.plus /

› [syvio](#) /

› [Syvio Food Processor SC10 User Manual](#)

syvio SC10

Syvio Food Processor SC10 User Manual

Model: SC10

1. IMPORTANT SAFETY INSTRUCTIONS

Please read all instructions carefully before using the Syvio Food Processor. Failure to follow these instructions may result in electric shock, fire, or serious injury.

- Always ensure the motor unit is securely placed on the bowl and the blade is locked in position before operation.
- Keep hands and utensils out of the processing bowl while operating to prevent injury.
- Do not operate the appliance with a damaged cord or plug, or after the appliance malfunctions or has been dropped or damaged in any manner.
- Unplug from outlet when not in use, before putting on or taking off parts, and before cleaning.
- This appliance is equipped with a thermal protection device. If the motor overheats, the unit will automatically stop. Allow the appliance to cool down for approximately 25 minutes before resuming use.
- Do not immerse the motor unit in water or other liquids. Clean with a damp cloth only.
- Blades are sharp. Handle with extreme care during assembly, disassembly, and cleaning.
- Ensure the lid is properly secured before operating the food processor.



Safer operation

- ▶ **Micro Switch Design**
Prevents the motor unit from starting when it is not placed on the bowl.
- ▶ **Automatic Braking Design**
When the motor unit is picked up, the blade will stop rotating immediately.
- ▶ **Overheating Protection Design**
When the product overheats, the protection is activated, which can extend the service life of the product.

Safety Features: The Syvio Food Processor includes a micro switch to prevent operation if not assembled correctly, automatic braking for immediate blade stop upon lifting the motor unit, and overheating protection to extend product life.

2. PRODUCT OVERVIEW AND COMPONENTS

The Syvio Food Processor SC10 is designed for versatile food preparation, including chopping, blending, pureeing, mixing, and mincing. It comes with two distinct bowls for various uses.



Product Overview: The Syvio Food Processor features a powerful motor unit, a glass processing bowl, and a stainless steel processing bowl, along with sharp bi-level blades.

Included Components:

- Motor Unit (x1)
- 8-Cup Glass Bowl (x1)
- 8-Cup Stainless Steel Bowl (x1)
- Blade Sets (x2) - 4 bi-level stainless steel blades per set
- Lids/Top Covers (x2)
- Silicone Coaster (x1)
- Instruction Manual (x1)



Component Diagram: A visual representation of all parts included with your Syvio Food Processor.

The two 8-cup bowls allow for separate preparation, such as meat in one and vegetables or baby food in the other, preventing flavor transfer.

2 BOWLS FOR FAMILY AND BABY USE



Dual Bowl System: The appliance includes both a glass and a stainless steel bowl, each with an 8-cup capacity, suitable for family and baby food preparation.

TWO BOWLS ARE STACKABLE FOR EASY STORAGE

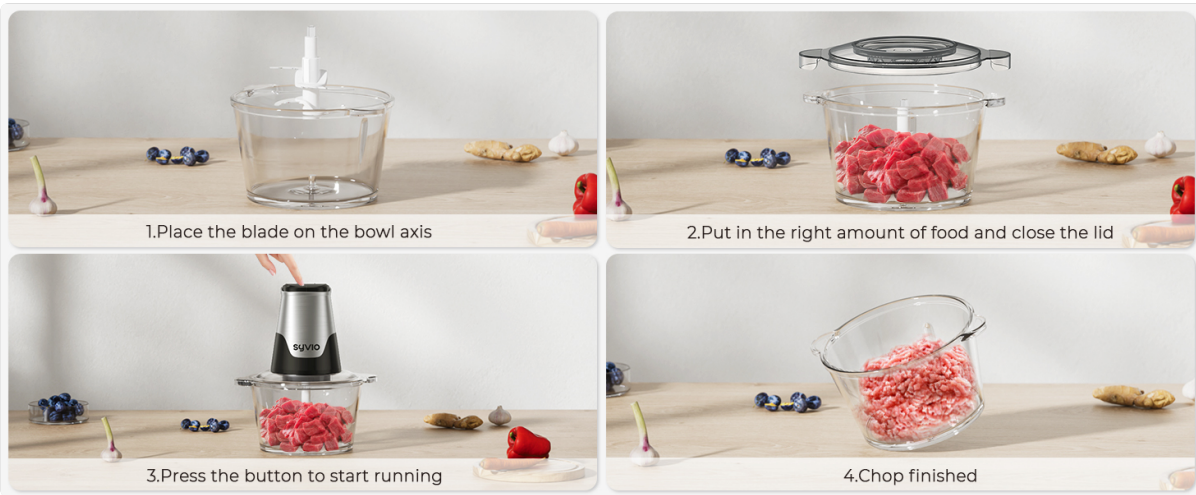


Stackable Design: The two bowls are designed to be stackable for convenient and space-saving storage.

3. ASSEMBLY AND SETUP

Follow these steps to correctly assemble your food processor before use:

1. Place the desired processing bowl (glass or stainless steel) on a stable, flat surface.
2. Carefully place one of the blade sets onto the shaft axis inside the bowl. Ensure it is seated correctly. The plum interface on the motor unit matches the blade's locking mechanism.
3. Add the ingredients you wish to process into the bowl. Do not overfill.
4. Place the lid securely onto the bowl.
5. Position the motor unit on top of the lid, aligning it with the blade shaft. Ensure it clicks into place, activating the safety micro switch.



Assembly Steps: A visual guide demonstrating the correct sequence for assembling the food processor.

4. OPERATING INSTRUCTIONS

The Syvio Food Processor features a 450W motor and 4 bi-level stainless steel blades for efficient processing. It offers two speed settings for different food types.

Speed Settings:

- **Speed I (Soft Food):** Use for softer ingredients such as tomatoes, pumpkin, onions, and celery. Press the 'I' button on the motor unit.
- **Speed II (Hard Food):** Use for harder ingredients or larger volumes, including meat, carrots, apples, and nuts. Press the 'II' button on the motor unit.

For best results, use short pulses by pressing and releasing the speed button. This allows for precise control over the texture of your food.

2 SPEED TO CHOP

Chop every ingredients you want



I For Soft Food



Tomatoes



Pumpkin



Onions

II For Hard Food



Meat



Carrots



Nuts

Two Speed Control: Select Speed I for soft ingredients and Speed II for harder ingredients to achieve optimal chopping results.

EASILY CHOP FOOD IN 8 SECONDS

"I" For Soft Food



Onion

Celery



Tomatoes

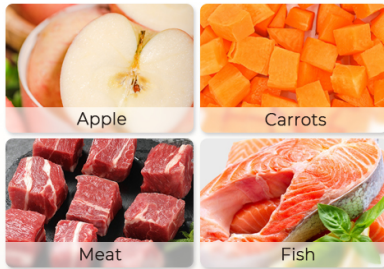
Pumpkin



Speed I for Soft Food: Ideal for quickly chopping softer ingredients.

EASILY CHOP FOOD IN 8 SECONDS

"II" For Hard Food



Speed II for Hard Food: Suitable for processing tougher ingredients efficiently.

Tips for Best Performance:

- Cut large ingredients into smaller, uniform pieces before processing.
- Do not overload the bowl. Process in batches if necessary.
- For optimal chopping, ensure the blades are clean and sharp.
- The food processor is suitable for preparing baby food and homemade pet food.

PERFECT FOR HOMEMADE PET'S FOOD



Spinach, carrots, zucchini, peas, ground chicken, and brown rice



Chicken meat, boiled brown rice and boiled potato

Pet Food Preparation: The food processor is effective for making homemade pet food with various ingredients.

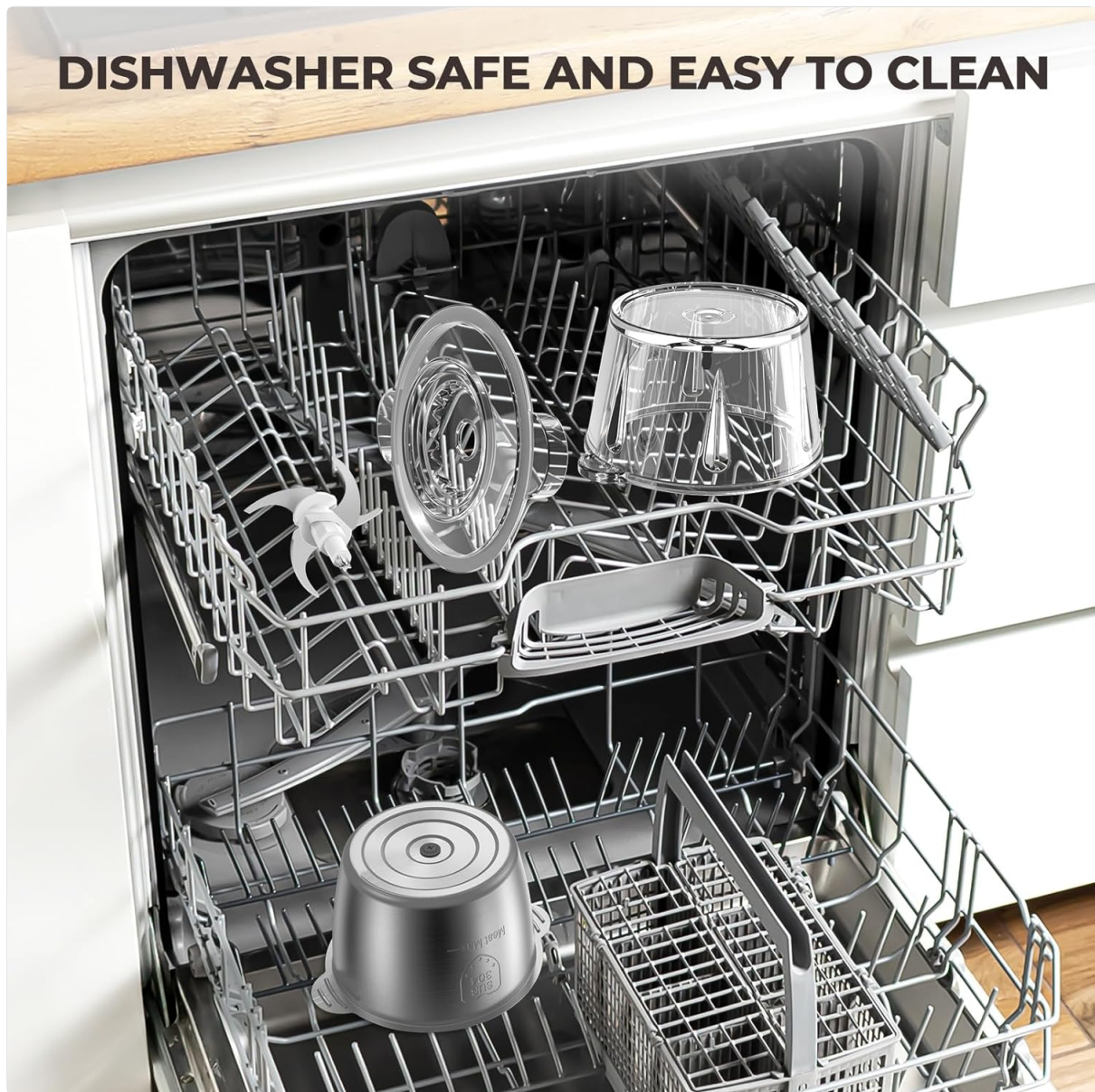
5. CARE AND MAINTENANCE

Proper cleaning and maintenance will ensure the longevity and optimal performance of your Syvio Food Processor.

Cleaning Instructions:

- Always unplug the appliance before cleaning.
- The glass bowl, stainless steel bowl, lids, and blade sets are dishwasher safe.
- For manual cleaning, wash parts in warm, soapy water. Rinse thoroughly and dry immediately.
- Wipe the motor unit with a damp cloth. Do not immerse it in water.
- Handle blades with extreme caution as they are very sharp. Store them with their protective covers

when not in use.



Dishwasher Safe Components: The bowls, lids, and blades can be safely cleaned in a dishwasher.

6. TROUBLESHOOTING

If you encounter any issues with your food processor, refer to the following common problems and solutions:

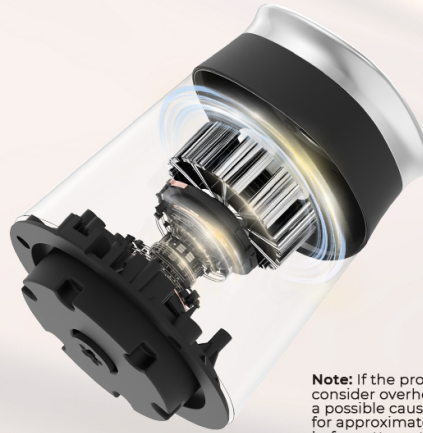
- **Appliance does not start:**
 - Ensure the motor unit is correctly placed and locked onto the lid and bowl. The safety micro switch prevents operation if not properly assembled.
 - Check if the power cord is securely plugged into a working outlet.
- **Motor stops during operation (Overheating Protection):**
 - This is a normal safety feature. The appliance has overheated.
 - Unplug the unit and allow it to cool down for approximately 25 minutes before attempting to use it again.
 - Avoid continuous operation for more than 1 minute. Allow a 3-minute rest period between uses.

- **Food is not chopping evenly:**

- Ensure ingredients are cut into uniform, smaller pieces before processing.
- Do not overload the bowl. Process in smaller batches.
- Use the pulse function for better control over consistency.

UPGRADE PURE COPPER SUPERIOR MOTOR

You can work for up to 1 minute, followed by a 3-minute rest, before resuming work.



Note: If the product malfunctions, consider overheating as a possible cause. Allow it to cool for approximately 25 minutes before attempting to use it again.

Overheat Protection: The motor is designed with overheating protection. If activated, allow the unit to cool for 25 minutes.

7. PRODUCT SPECIFICATIONS

Brand	syvio
Model Name	SC10
Special Feature	Adjustable Speed Control
Product Dimensions	8.9"D x 8.9"W x 7.6"H
Color	Black, Silver
Bowl Capacity	8 Cups (Glass), 8 Cups (Stainless Steel)
Number of Speeds	2
Blade Material	Stainless Steel
Power Source	AC adapter
Item Weight	5.17 pounds
Certifications	ETL approval, LAB certification

8. WARRANTY AND CUSTOMER SUPPORT

Syvio is committed to providing quality products and customer satisfaction.

Warranty Information:

This product comes with a **12-month quality warranty** from the date of purchase. The warranty covers defects in materials and workmanship under normal use.

Customer Support:

For any questions, concerns, or warranty claims, please contact Syvio customer service. Lifetime customer service is provided to support you with your product.

Please refer to the contact information provided in your purchase documentation or visit the official Syvio website for support.