

Manuals+

[Q & A](#) | [Deep Search](#) | [Upload](#)

[manuals.plus](#) /

- › [OIVO](#) /
- › [OIVO PS5 Horizontal Stand and Cooling Station User Manual](#)

OIVO IV-P5257-JP

OIVO PS5 Horizontal Stand and Cooling Station User Manual

Model: IV-P5257-JP

INTRODUCTION

Thank you for purchasing the OIVO PS5 Horizontal Stand and Cooling Station. This product is designed to enhance your PlayStation 5 gaming experience by providing stable horizontal placement, efficient cooling, and convenient charging for your DualSense controllers. This manual provides detailed instructions for setup, operation, and maintenance to ensure optimal performance and longevity of your device.



This image illustrates common concerns with vertical PS5 placement, such as instability, which this horizontal stand aims to resolve.

IMPORTANT SAFETY INFORMATION

- Ensure the product is placed on a stable, flat surface to prevent tipping.
- Do not block the ventilation openings of the cooling stand or the PS5 console.
- Keep away from water, moisture, and high temperatures.
- Do not attempt to disassemble or repair the unit yourself. Contact customer support if issues arise.
- This stand is designed for the original 2020 PS5 Disc & Digital Editions only. It is **NOT** compatible with 2023 PS5 Slim or 2024 PS5 Pro models.



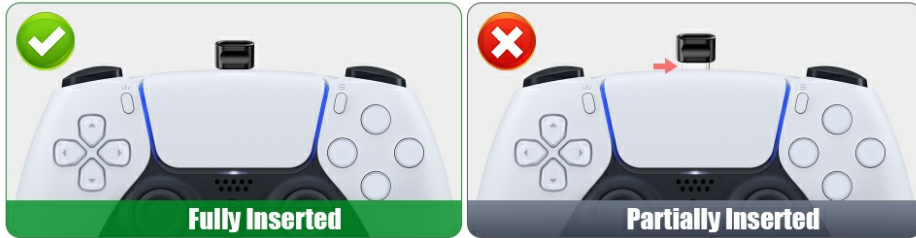
This image illustrates that the OIVO PS5 Horizontal Stand is not compatible with the PS5 Slim or PS5 Pro consoles, showing these models with a red 'X' over them.

PACKAGE CONTENTS

Please check the package to ensure all items are present:

- 1 x Left Part of Stand for PS5 Disc & Digital Editions
- 1 x Right Part of PS5 Stand with Fans and Charger
- 4 x USB-C Dongles
- 1 x EVA Foam (for PS5 Digital Edition)
- 1 x Power Cable (13.78 in / 35 cm)
- 1 x Screw

How to Insert USB Dongle Correctly?



What's included

1 x Left Part of Stand for PS5 Disc & Digital Editions
1 x Right Part of PS5 Stand with Fans and Charger
4 x USB C Dongle
1 x EVA Foam
1 x Power Cable (13.78 in/35 cm)
1 x Screw



This image displays all the components included in the product package, ensuring users can verify their contents.

PRODUCT FEATURES



This image provides an overall view of the OIVO PS5 Horizontal Stand, showcasing its design and primary functions.

- **Horizontal Placement:** Designed to securely hold your PS5 console horizontally, improving stability and ventilation compared to vertical placement.
- **Dual Controller Charging:** Equipped with two charging docks for PS5 DualSense controllers, capable of fully charging two controllers in 3-3.5 hours. LED indicators show charging status (Red: Charging, Green: Charged/Standby).
- **3-Level Cooling Fan:** Features two built-in silent cooling fans with adjustable speeds (3500 RPM, 4000 RPM, 4500 RPM) to assist in cooling the PS5 console. Fans can be turned on/off via a switch and have blue LED lights.

- **Enhanced Stability:** Includes an upgraded screw-fixing design and anti-skid pads for secure console placement and protection against scratches.
- **Safety Protections:** Built-in safeguards against input over-voltage, short-circuit, over-temperature, and output overcurrent.



This image visually represents the core features of the OIVO PS5 stand, including quiet cooling, fan and charging indicators, and stable placement.

SETUP AND INSTALLATION

Follow these steps to properly install your OIVO PS5 Horizontal Stand:

1. Step 1: Prepare the Left Stand (Digital Edition Only)

If you have the PS5 Digital Edition, insert the provided EVA foam into the designated slot on the left stand. This foam ensures a snug fit for the slimmer Digital Edition console.

2. Step 2: Attach the Left Stand to PS5

Take the screw from the slot at the bottom of the left PS5 stand. Place your PS5 console upside down onto the left stand, aligning the screw hole on the console with the stand's screw hole. Securely fix the left part of the stand to the PS5 console using the screw.

3. Step 3: Connect the Right Stand

Carefully place the PS5 console vertically. Connect the right stand (which contains the fans and charger) to the PS5 console. Ensure it clicks into place securely.

4. Step 4: Power Connection

Connect the included USB-C to USB-C power cable from the PS5 cooling station to the PS5 console's front USB-C port for power supply.

5. Step 5: Prepare Controllers for Charging

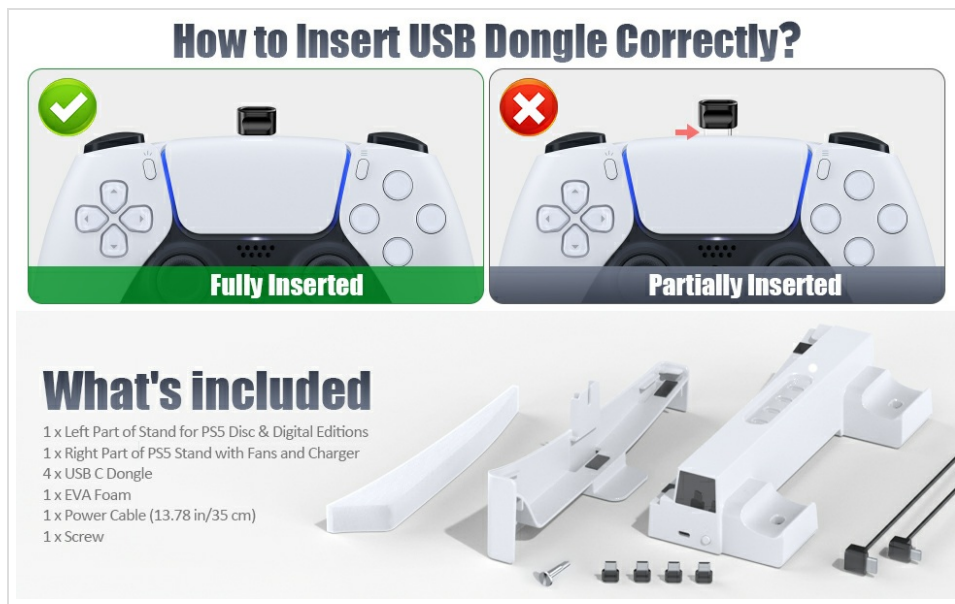
Take out one of the four USB dongles. Insert the USB dongle into the USB-C port of your PS5 DualSense controller. Ensure it is fully inserted for proper connection.

6. Step 6: Place Controllers on Charging Docks

Place the controller with the inserted dongle onto one of the charging docks on the right stand. The LED indicator on the stand will turn red, indicating charging is in progress. It will turn green when fully charged or in standby.



This image provides a visual step-by-step guide for the installation process of the stand.



This image clarifies the correct method for inserting the USB dongle into the controller for charging.

OPERATING INSTRUCTIONS

Cooling Fan Operation

The cooling fans help dissipate heat from your PS5 console, especially during extended gaming sessions. The fan speed can be adjusted to three levels:

- **Low (3500 RPM):** Gentle cooling, minimal noise.
- **Medium (4000 RPM):** Balanced cooling and noise.
- **High (4500 RPM):** Maximum cooling performance.

To operate the fans, locate the fan switch on the side of the right stand. Press the switch to cycle through the fan speeds or to turn the fans off. The blue LED lights on the fan indicate active cooling.



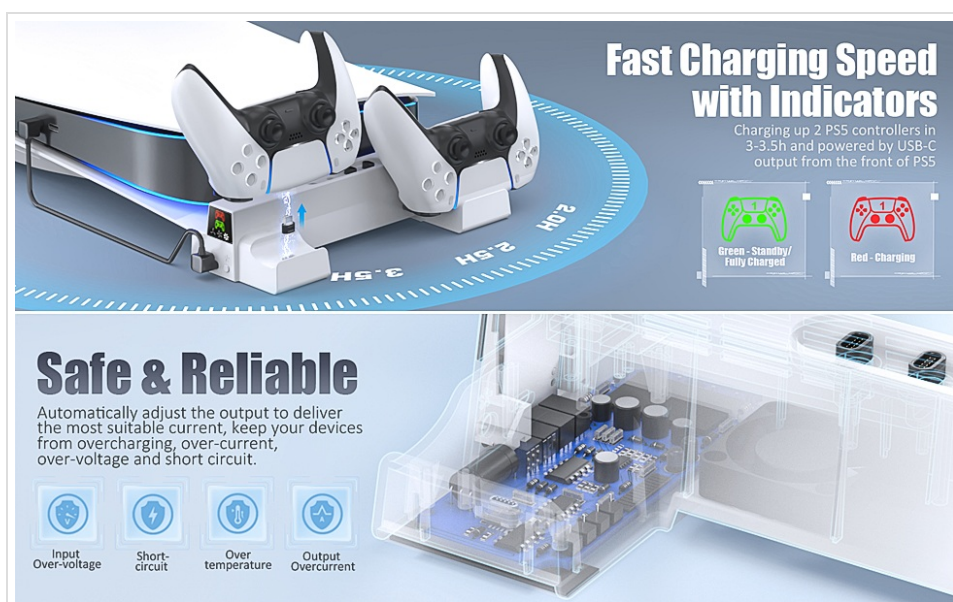
This diagram shows the internal cooling system and the three adjustable fan speeds.

Controller Charging

The stand features two dedicated charging docks for your PS5 DualSense controllers. Ensure the USB dongle is correctly inserted into the controller's USB-C port before placing it on the dock.

- **Charging Indicator:** The LED indicator on the stand will illuminate **RED** when a controller is charging.
- **Fully Charged/Standby Indicator:** The LED indicator will turn **GREEN** when the controller is fully charged or if no controller is present on the dock.

Charging time for two controllers is approximately 3-3.5 hours. The charging station draws power directly from the PS5 console via the connected USB-C cable.



This image demonstrates the controller charging process and the meaning of the LED indicators.

MAINTENANCE

- **Cleaning:** Use a soft, dry cloth to wipe down the stand. Do not use abrasive cleaners or solvents.
- **Dust Removal:** Periodically check the fan vents for dust accumulation. Use compressed air or a soft brush to gently remove dust to maintain optimal airflow.
- **Storage:** If storing the stand for an extended period, disconnect it from the PS5 and store it in a cool, dry place.

TROUBLESHOOTING

Problem	Possible Cause	Solution
Fans not turning on.	Power cable not connected or loose. Fan switch is off.	Ensure the USB-C power cable is securely connected to both the stand and the PS5 console. Press the fan switch to turn on the fans.
Controllers not charging.	USB dongle not fully inserted. Controller not properly seated on dock. Power issue.	Ensure the USB dongle is fully inserted into the controller. Re-seat the controller firmly on the charging dock. Verify the stand is receiving power from the PS5.
Fan noise is excessive.	Fan speed set to High. Dust accumulation.	Reduce the fan speed using the fan switch. Clean any dust from the fan vents.
Stand feels unstable.	Screw not tightened. Not on a flat surface.	Ensure the screw connecting the left stand to the PS5 is tightened. Place the entire setup on a flat, stable surface.

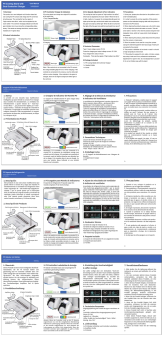



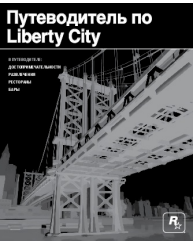
SPECIFICATIONS

- **Model Number:** IV-P5257-JP
- **Product Dimensions:** 10.63 x 5.51 x 3.15 inches
- **Item Weight:** 12.3 ounces
- **Fan Speed:** 3-level adjustable (3500 RPM, 4000 RPM, 4500 RPM)
- **Controller Charging Time:** Approximately 3-3.5 hours for two controllers
- **Input Power:** 5V/2A (from PS5 console)
- **Compatibility:** PS5 Disc Edition and PS5 Digital Edition (2020 models only). Not compatible with PS5 Slim/Pro.
- **Manufacturer:** OIVO
- **Country of Origin:** China

WARRANTY AND SUPPORT

OIVO products are designed for reliability and performance. For warranty information or technical support, please refer to the contact details provided with your purchase or visit the official OIVO website. Please retain your proof of purchase for warranty claims.

For further assistance, you may visit the OIVO Store on Amazon: [OIVO Amazon Store](#)

	<p>PS5 Cooling Stand & Dual Controller Charger User Manual IV-P5235-01 OIVO</p> <p>Official user manual for the OIVO PS5 Cooling Stand with Dual Controller Charger (Model IV-P5235-01). Features include console cooling, fast controller charging, headset holder, game disc storage, and USB ports. Learn about setup, indicators, and precautions.</p>
	<p>Skymen Ultrasonic Cleaner User Manual and Specifications</p> <p>Comprehensive user manual and technical specifications for Skymen ultrasonic cleaners, covering operation, safety, maintenance, troubleshooting, and detailed model data for various series.</p>
	<p>ISOTRA Japanese Panel Blinds Technical Manual</p> <p>Comprehensive technical manual for ISOTRA Japanese Panel Blinds, detailing product specifications, configurations, measuring instructions, installation guidance, and safety features.</p>
	<p>Linksys Apple HomeKit Setup Guide</p> <p>A guide to setting up Linksys Velop Tri-Band routers with Apple HomeKit for enhanced smart home security. Learn how to integrate your Linksys router with the Apple Home app to protect your HomeKit accessories.</p>
	<p>Grand Theft Auto IV: Liberty City Guide</p> <p>A comprehensive guide to Liberty City from Grand Theft Auto IV, covering landmarks, entertainment, restaurants, bars, and gameplay tips. Includes controller information and survival advice for navigating the city.</p>