

Manuals+

[Q & A](#) | [Deep Search](#) | [Upload](#)

manuals.plus /

- › [Braun](#) /
- › [Braun IPL Silk-Expert Pro 5 PL5347 Instruction Manual](#)

Braun PL5347

Braun IPL Silk-Expert Pro 5 PL5347 Instruction Manual

At-Home Laser Hair Removal System

INTRODUCTION

The Braun IPL Silk-Expert Pro 5 PL5347 is an advanced at-home Intense Pulsed Light (IPL) device designed for safe and effective long-term hair removal. This system offers a convenient solution for achieving smooth skin from the comfort of your home, with visible results typically seen after just two sessions.

The device features a unique Smart Skin Tone Sensor that automatically adapts each flash to your skin tone, ensuring optimal safety and efficacy. It is dermatologically and gynecologically approved, and designed to be eye-safe, eliminating the need for protective glasses.



2 years of
smooth skin.¹

Discover the at-home alternative to laser.

¹Following recommended regimen, individual results may vary.

Image: A woman with visibly smooth underarms, illustrating the effectiveness of the Braun IPL device for long-lasting results.

WHAT'S INCLUDED

Your Braun IPL Silk-Expert Pro 5 PL5347 package contains the following components:

- **Braun Silk-Expert Pro 5 Device:** The main IPL unit with integrated Smart Skin Tone Sensor.
- **Wide Head:** Designed for efficient treatment of larger body areas such as legs and arms.
- **Two Precision Heads:** Smaller heads for precise treatment of sensitive and smaller areas like the face and bikini line.
- **Vanity Kit:** A stylish storage case for your device and accessories.
- **Venus Extra Smooth Swirl Razor:** For pre-treatment shaving.
- **Power Cable:** To connect the device to a power source.

BRAUN

5
Years
Warranty
T&C on Braun.com apply

2 years of smooth skin.

→ 100 days money back guarantee.



Image: All components of the Braun IPL Silk-Expert Pro 5 PL5347 kit, including the main device, various treatment heads, a Venus razor, and a vanity case.

IMPORTANT SAFETY INFORMATION

General Warnings and Precautions:

- **DO NOT USE** the device on any area where you may want hair to grow back.
- Hair removal by lasers or intense pulse light sources can cause increased hair growth in some individuals. The highest risk groups for this response are females of Mediterranean, Middle Eastern, and South Asian heritage treated on the face and neck.
- **DO NOT USE** if you have a known sensitivity to sunlight (photosensitivity) or are taking medication that causes photosensitivity (e.g., certain antibiotics like tetracycline, NSAIDS like ibuprofen, or retinoids like Accutane and/or topical retinoids like Retin A). Always check medical product instructions for photosensitivity side effects. Using the device on photosensitive skin could result in skin damage, including blisters and swelling.

- **DO NOT LOOK DIRECTLY** into the treatment window when the device is active.

Contraindications (DO NOT USE IF):

- You have very dark skin.
- Your skin has been artificially or naturally tanned or is burned from sun overexposure.
- You expose treated areas to the sun. Wait at least 7 days after treatment before exposing treated skin to direct sunlight.
- You are pregnant or lactating.
- You have a history of skin cancer or pre-cancerous lesions.
- You have any skin condition in the treatment area, including psoriasis, vitiligo, eczema, acne, herpes simplex, or active infections or wounds.
- You are under the age of 18.
- You have tattoos or permanent make-up in the treatment area.
- You intend to use it on dark brown or black spots such as birthmarks, moles, or warts.
- You are a man and intend to use it on beard/facial hair.
- You intend to use it directly on the nipples, genitals, or around the anus.

Potential Side Effects (Observed in Clinical Trials):

- Itchiness (mild and temporary).
- Slight Redness (temporary).
- Mild Stinging Sensation (temporary discomfort).
- In-growing Hair (rare).
- Follicle Redness (rare, temporary).

In all reported cases, treated skin returned to normal within 7 days.

Suitable on most skin tones and hair colors.

For optimal results, there must be contrast between skin tone and hair color.

Suitable skin tones:



Not suitable



Suitable body-hair colors:



Not suitable



Image: A chart illustrating suitable skin tones and hair colors for effective and safe IPL treatment, emphasizing the need for contrast between skin and hair color.

SETUP AND PREPARATION

Before each treatment session, proper preparation of your skin is crucial for safety and optimal results.

1. **Cleanse Skin:** Ensure the treatment area is clean, dry, and free from any lotions, creams, deodorants, or gels.
2. **Shave:** Shave the treatment area thoroughly using the provided Venus razor or your preferred method. IPL works best on hair follicles that are in their growth phase and visible on the surface of the skin.
3. **Inspect Skin:** Check the treatment area for any contraindications listed in the safety section, such as cuts, wounds, moles, or recent tanning.
4. **Connect Device:** Plug the power cable into the Braun IPL device and then into a power outlet. The device is corded for continuous power during your session.

Professional results in 3 easy steps.

Full body session in 10 min.⁴

⁴Legs (upper & lower), underarm, bikini, upper lip.



Image: A visual guide demonstrating the three essential steps before and during IPL treatment: shaving the area, positioning the device, and activating the flash.

OPERATING INSTRUCTIONS

The Braun IPL Silk-Expert Pro 5 is designed for user-friendly operation. Follow these steps for an effective treatment:

1. Power On and Skin Tone Adaptation:

- Press any button to turn on the device. The fan will start, and the intensity lights will illuminate.
- The integrated SensoAdapt™ sensor will automatically read your skin tone 80 times per second and adjust the light intensity for safe and effective treatment. The intensity lights on the side of the device will indicate the detected skin tone and corresponding power level.

99.6% of users experienced no skin irritation.⁶

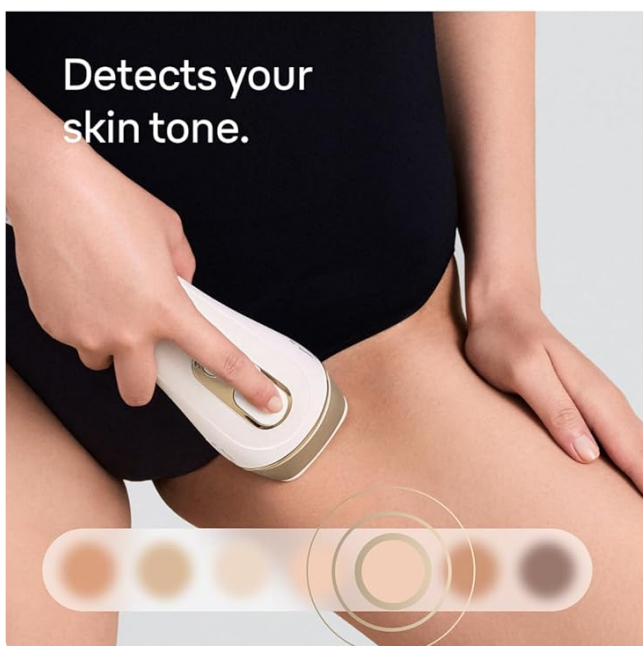


Smart SkinProtect Sensor
for maximum protection.

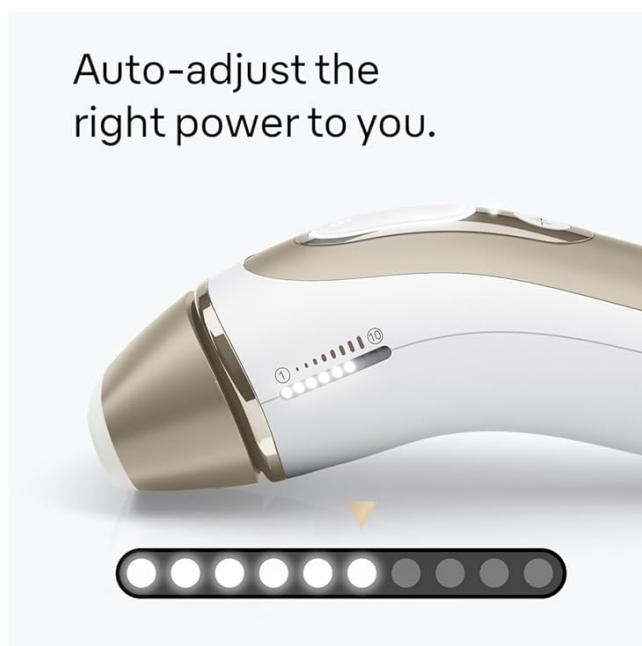


→ FDA cleared.

⁶ Average of subjective data from clinical study from Mar'22 to Nov'23 on female axilla.



Detects your
skin tone.



Auto-adjust the
right power to you.

Image: The Braun IPL device's Smart SkinProtect Sensor in action, detecting skin tone and automatically adjusting the light intensity for maximum protection and effectiveness.

2. Selecting the Right Head:

The device comes with different heads optimized for various body areas:

- **Standard Head:** Ideal for lower legs, arms, and underarms.
- **Wide Head:** Best for larger body areas like the chest, back, or upper legs, ensuring faster treatment.
- **Precision Heads:** Perfect for smaller, sensitive, or hard-to-reach areas such as the face, bikini line, or underarms.

Your browser does not support the video tag.

Video: An official Braun video demonstrating how to select and attach the appropriate treatment head (Standard, Wide, or Precision) for different body areas to optimize IPL sessions.

3. Treatment Application:

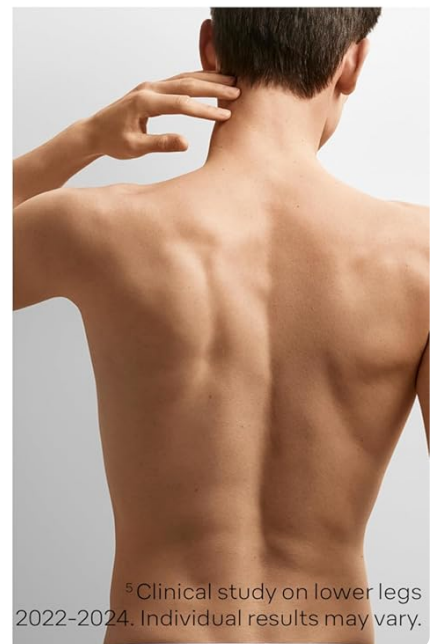
Place the treatment window firmly against your skin, ensuring full contact. The device will only flash if it detects proper skin contact and a suitable skin tone.

- **Gliding Mode (for large areas):** For faster treatment of large areas like legs, hold down the activation button and slowly glide the device over your skin. The device will flash continuously.
- **Stamp Mode (for small or sensitive areas):** For precise treatment of smaller or sensitive areas like the face, underarms, or bikini line, place the device on the skin, press and release the activation button, then lift and move to the next adjacent area.

You may feel a mild warm sensation with each flash, which is normal. If you experience any discomfort, adjust the intensity level or consult the safety guidelines.

Up to **95% hair reduction** in **only 1 month.**⁵

- ✓ Only 1 session per week.
- ✓ Less than any other brand in the US.



⁵Clinical study on lower legs 2022-2024. Individual results may vary.

Image: Demonstrates the versatility of the Braun IPL device being used on different body areas, including a man's chest and back, and a woman's face, highlighting its adaptability for various hair removal needs.

4. Treatment Schedule:

For optimal results, follow the recommended treatment regimen:

- **Initial Phase:** Use the device once per week for 4-12 weeks. You should start to see visible hair reduction after just 2 sessions.
- **Maintenance Phase:** After achieving desired results, continue with touch-up sessions as needed (e.g., once every 1-2 months) to maintain smooth skin.

MAINTENANCE AND CARE

Proper maintenance ensures the longevity and optimal performance of your Braun IPL device.

- Cleaning the Device:** After each use, unplug the device and allow it to cool down. Wipe the treatment window and the outer surface of the device with a dry, lint-free cloth. Do not use abrasive cleaners or immerse the device in water.
- Storing the Device:** Store the device and its attachments in the provided vanity kit in a cool, dry place, away from direct sunlight and moisture.
- Checking for Damage:** Regularly inspect the device, power cable, and attachments for any signs of damage. If any damage is found, discontinue use and contact Braun customer service.

TROUBLESHOOTING

If you encounter any issues with your Braun IPL Silk-Expert Pro 5, please refer to the following common troubleshooting tips:

Problem	Possible Cause	Solution
Device does not turn on.	Not properly plugged in; power outlet issue.	Ensure the power cable is securely connected to the device and a working power outlet.
Device does not flash.	Poor skin contact; unsuitable skin tone; device malfunction.	Ensure the treatment window is fully pressed against the skin. Check skin tone suitability (refer to chart). If problem persists, contact customer support.
Flashes feel too intense or painful.	Skin tone may be too dark for current setting; device not adapting correctly.	Ensure the SensoAdapt™ sensor is clean and making full contact. If discomfort continues, discontinue use and consult a dermatologist.
No visible hair reduction after several sessions.	Inconsistent use; unsuitable hair/skin combination; underlying medical condition.	Ensure consistent weekly use as recommended. Verify your hair and skin tone are suitable for IPL. Consult a medical professional if concerns persist.

For further assistance, please refer to the full user manual or contact Braun customer support.

SPECIFICATIONS

- Model:** PL5347
- Product Dimensions:** 13.94 x 5.38 x 9.33 inches

- **Item Weight:** 1.11 Pounds (505.5 Grams)
- **Power Source:** Corded
- **Color:** Gold
- **Water Resistance Level:** Not Water Resistant
- **Manufacturer:** Procter & Gamble
- **Country of Origin:** United Kingdom
- **UPC:** 069055890509

WARRANTY AND SUPPORT

The Braun IPL Silk-Expert Pro 5 PL5347 comes with a manufacturer's warranty. For specific warranty details, including coverage period and terms, please refer to the warranty card included in your product packaging or visit the official Braun website.

For customer support, product registration, or to purchase replacement parts, please visit the [Braun Store on Amazon](#) or contact Braun directly through their official channels.