

[manuals.plus](#) /

› [listerpro](#) /

› [Listerpro Professional Pet Grooming Clipper Replacement Blade \(4f 9mm\) User Manual](#)

**listerpro Literpro-A8, Literpro-X5, 4f 9mm**

# Listerpro Professional Pet Grooming Clipper Replacement Blade (4f 9mm)

User Manual



## 1. INTRODUCTION

Thank you for choosing the Listerpro Professional Pet Grooming Clipper Replacement Blade. This 4f (9mm) blade is designed for precision grooming and is compatible with Listerpro-A8 and Listerpro-X5 pet clippers. This manual provides essential information for safe and effective use, ensuring optimal performance and longevity of your grooming equipment.



Image 1.1: The Listerpro 4f (9mm) Professional Pet Grooming Clipper Replacement Blade.

## 2. SAFETY INFORMATION

Please read and understand all safety precautions before using the replacement blade and associated grooming clippers. Failure to follow these instructions may result in injury or damage to the product.

- Avoid direct contact with skin and eyes when handling the blade.
- Handle the blade with extreme care due to its sharp edges.
- Always follow the manufacturer's instructions for proper handling, installation, and storage of detachable blades.
- Ensure the electrical trimmer is kept away from water sources to prevent electric shock.
- Always unplug the trimmer from the power source when not in use, during blade changes, or during cleaning.
- Keep out of reach of children and pets.

### 3. PRODUCT OVERVIEW

The Listerpro 4f (9mm) replacement blade is engineered for professional pet grooming, offering durability and precision.

#### Key Features:

- **Advanced Blade Construction:** Features an upgraded stainless steel fixed blade combined with a titanium-coated ceramic movable blade for superior performance.
- **Cooler and Sharper Cutting:** Designed with cutting technology that runs cooler and maintains sharpness for extended periods.
- **Detachable Design:** Allows for easy changing and cleaning, promoting hygiene and convenience.
- **Compatibility:** Specifically designed for Listerpro pet professional clippers, including models Listerpro-A8 and Listerpro-X5.

#### Materials:

The blade is constructed from high-quality Ceramic, Stainless Steel, and Titanium, ensuring durability and a long lifespan.

### 4. SETUP: BLADE INSTALLATION

Follow these steps to safely replace or install the grooming clipper blade:

1. **Prepare the Clipper:** Ensure the pet grooming clipper is turned off and unplugged from any power source. If an old blade is present, carefully remove it.
2. **Align the Blade:** Hold the new replacement blade and align it with the clipper head. Ensure the small tabs on the back of the blade fit into the corresponding slots on the clipper.

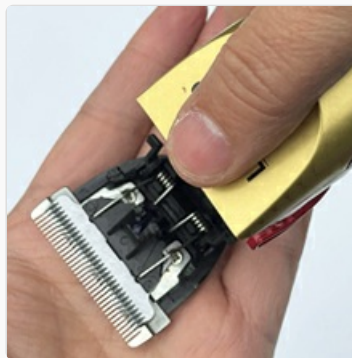


Image 4.1: Preparing the clipper for blade installation.



Image 4.2: Identifying the blade release mechanism (if applicable).



Image 4.3: Gently rotating the blade into its locked position.

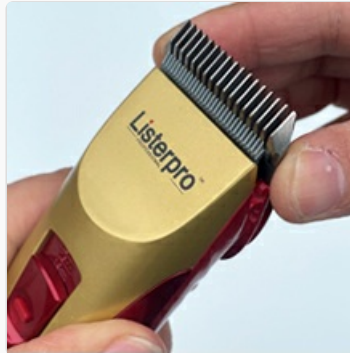


Image 4.4: The blade fully attached and ready for use.

3. **Secure the Blade:** Gently press the blade down until it clicks securely into place. Ensure it is firmly attached and does not wobble.
4. **Test:** Once installed, you can now use the clippers as normal.

## 5. OPERATING INSTRUCTIONS

This replacement blade is designed for use with Listerpro-A8 and Listerpro-X5 professional pet grooming clippers. For detailed operating instructions of the clipper unit, please refer to its specific user manual.

### Grooming Tips:

- **Lubrication:** Before each grooming session, apply a few drops of clipper oil to the blades to ensure smooth operation and reduce heat buildup.
- **Comb Hair:** Always comb your pet's hair thoroughly before clipping to remove tangles and mats, which can snag the blades.
- **Direction of Growth:** It is important to trim your pet's hair in the direction of its growth. Cutting against the direction of hair growth may result in a shorter than desired cut and can cause discomfort to your pet.
- **Regular Breaks:** For longer grooming sessions, take short breaks to allow the clipper and blade to cool down.



Image 5.1: Professional pet grooming in progress.

## 6. MAINTENANCE

Proper maintenance of your replacement blade will extend its lifespan and ensure consistent performance.

- **Cleaning:** After each use, detach the blade from the clipper. Use a small brush (often included with clippers) to remove any trapped hair from between the blades.
- **Washing:** If the blade is washable, rinse it under cool running water. Ensure it is completely dry before reattaching or storing to prevent rust.
- **Lubrication:** Regularly apply clipper oil to the blade teeth and friction points to keep them running smoothly and prevent overheating.
- **Storage:** Store the blade in a clean, dry place, ideally in its original packaging or a protective case, to prevent damage and dulling.

## 7. TROUBLESHOOTING

If you encounter issues with your replacement blade, consider the following common solutions:

- **Blade Not Cutting Effectively:**
  - Ensure the blade is clean and free of hair buildup.
  - Apply clipper oil to the blades.
  - Check if the blade is properly attached and secured to the clipper.
  - The blade may be dull and require replacement.
- **Blade Overheating:**
  - Ensure adequate lubrication.
  - Clean the blade thoroughly.
  - Take breaks during long grooming sessions to allow the blade to cool.
- **Unusual Noise:**
  - Verify the blade is correctly installed and secured.
  - Check for any foreign objects caught in the blade mechanism.



8. SPECIFICATIONS

Attribute	Detail
Manufacturer	Listerpro
Model Compatibility	Listerpro-A8, Listerpro-X5
Blade Size	4f (9mm)
Item Weight	1.13 ounces
Package Dimensions	2.36 x 2.24 x 1.02 inches
Color	Black
Material	Ceramic, Stainless Steel, Titanium
Special Features	Detachable Head, Easy to Clean
Recommended Uses	Clipping, Grooming, Professional Pet Use

9. WARRANTY AND SUPPORT

For any questions, concerns, or support regarding your Listerpro replacement blade or compatible clippers, please contact Listerpro customer service. While specific warranty details are not provided in this manual, general support can often be found by visiting the Listerpro store or contacting their official support channels.

**Note:** Always refer to the original clipper manual for warranty information pertaining to the entire grooming device.

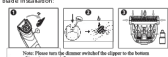


© 2024 Listerpro. All rights reserved.

Related Documents - Listerpro-A8, Listerpro-X5, 4f 9mm


**Listerpro**

Blade installation:



Now, please see the diagram attached to the bottom of the blade. It shows the correct way to hold the blade and the correct way to use the clipper.

Scan the QR code to access:



Blade Installation Video


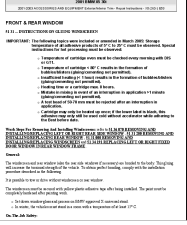


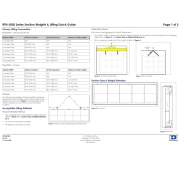
View Video

**Recommendations:**

1. Wash and dry your hair before trimming, before trimming.
2. Before trimming, you should cut the electric scissors before using the electric scissors.
3. During the trimming process, hold the clipper head in your hand and push it to the top of the hair between the upper and lower blades and use with trimming. The hair should be cut smoothly.
4. When trimming long and thick hair, you can push the hair to the root of the hair for trimming. Electric clippers should always be used to keep the hair from being damaged.
5. Wash hair after trimming and use with oil.

[Listerpro Professional Clipper Blade Installation and Usage Guide](#)

A guide to installing and using Listerpro Professional Clippers, including blade installation, usage recommendations, and video tutorials.

	<p><a href="#">Daikin R32 Split Series Installer Reference Guide</a></p> <p>Comprehensive guide for installers on Daikin's R32 Split series air conditioning systems, detailing installation, safety, technical data, and troubleshooting.</p>
	<p><a href="#">BMW X5 (E53) Windscreen and Rear Window Repair Instructions</a></p> <p>Detailed repair instructions for removing and installing windshields and rear windows on the 2001-2003 BMW X5 30i (E53), covering adhesives, tools, safety, and procedures.</p>
	<p><a href="#">GLP X5 atom IP Safety and User Manual: Installation and Operation Guide</a></p> <p>Comprehensive safety and user manual for the GLP X5 atom IP lighting system, covering installation, operation, maintenance, and technical specifications for the X5 atom IP Head and PSU6.</p>
	<p><a href="#">Popur X5 Self-Cleaning Litter Box User Manual - Automatic Pet Care</a></p> <p>User manual for the Popur X5 Self-Cleaning Litter Box. Learn about automated scooping, app control, safety, maintenance, warranty, and specifications for this smart pet device from Popur.</p>
	<p><a href="#">Daktronics RTN-3020 Series Section Weights &amp; Lifting Quick Guide</a></p> <p>This guide provides essential weight and lifting information for Daktronics RTN-3020 Series LED display sections with 3.9mm, 5.9mm, and 10mm pixel pitches. It details primary lifting connections, alternate lifting methods, and provides a comprehensive table of section sizes and estimated weights.</p>