

[Manuals.plus](#) /

› [DOSMONO](#) /

› DOSMONO AI Smart Voice Ergonomic Bluetooth Computer Mouse User Manual

## DOSMONO C406

# DOSMONO AI Smart Voice Ergonomic Bluetooth Computer Mouse User Manual

Brand: DOSMONO | Model: C406

## INTRODUCTION

---

This manual provides comprehensive instructions for the setup, operation, and maintenance of your DOSMONO AI Smart Voice Ergonomic Bluetooth Computer Mouse. Designed for enhanced productivity and comfort, this mouse features advanced voice recognition for typing and translation, adjustable DPI, and a stable 2.4GHz wireless connection. Please read this manual thoroughly to ensure optimal performance and longevity of your device.



A top-down view of the black DOSMONO AI Smart Voice Ergonomic Bluetooth Computer Mouse, with its USB receiver placed to the left.

## WHAT'S IN THE BOX

---

Please verify that all items are present in the package:

- Wireless Mouse
- Manual (this document)

- Macro 5-pin Charging Cable
- USB Receiver

## SETUP

---

1. **Charge the Mouse:** Connect the provided macro 5-pin charging cable to the mouse's charging port and a USB power source. The mouse has a built-in Lithium Ion battery (included).
2. **Locate the USB Receiver:** The USB receiver is typically stored in a compartment on the underside of the mouse for safe keeping. Gently slide open the compartment cover and remove the receiver.



The DOSMONO AI Smart Voice Mouse shown with its USB receiver and a keyboard, illustrating the components.

3. **Insert the USB Receiver:** Plug the USB receiver into an available USB port on your computer (Windows or Mac laptop/desktop).
4. **Power On the Mouse:** Locate the ON/OFF switch on the underside of the mouse and slide it to the "ON" position.
5. **Automatic Connection:** The mouse will automatically connect to your computer via the 2.4GHz wireless technology. No additional drivers are typically required.



## Connect via unifying USB Receiver

Provides automatic frequency identification without delay

The DOSMONO AI Smart Voice Mouse positioned next to a laptop, illustrating its 2.4GHz wireless connection via a unifying USB receiver for stable, delay-free operation.

- 6. Software Installation for Voice Features:** For voice typing and translation features, you may need to install specific software. Long-press the mouse's "wheel button" for more than 5 seconds to enter the download page, then follow the on-screen steps to complete the software installation.

Your browser does not support the video tag.

Official product video demonstrating the features of the DOSMONO AI Smart Voice Mouse, including voice typing, voice search, and the process of inserting and removing the USB receiver.

## OPERATING INSTRUCTIONS

### Ergonomic Design

The mouse features a streamlined arc design that conforms to the natural curve of the hand, reducing stress during prolonged use. This design promotes comfort for hands, wrists, and arms.

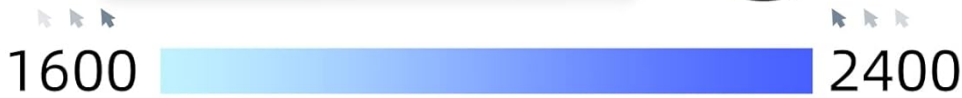
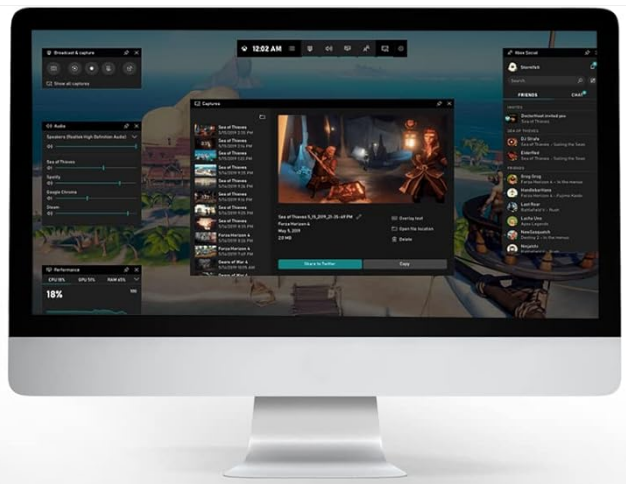


## Ergonomic Design Comfortable and Anti-slip

An image showing a hand comfortably resting on the DOSMONO AI Smart Voice Mouse, highlighting its ergonomic design that conforms to the natural curve of the hand.

### Adjustable DPI

The mouse offers adjustable DPI settings between 1600 and 2400. Use the dedicated DPI button (usually located near the scroll wheel) to cycle through the sensitivity levels. This allows you to customize the mouse's responsiveness to suit different tasks, from precise graphic design to fast-paced gaming.



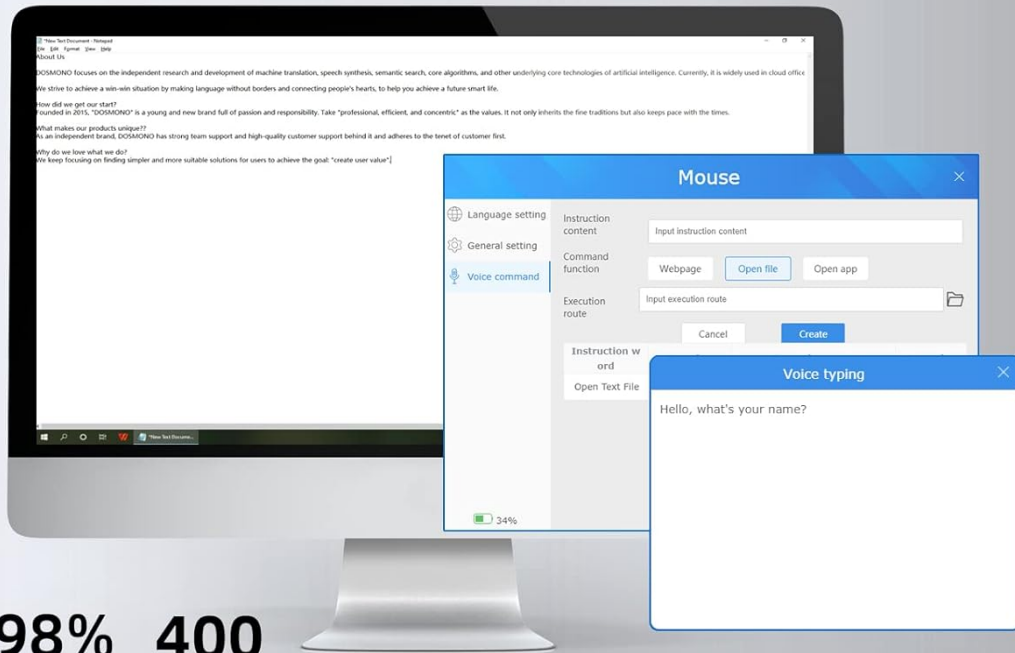
## Adjustable DPI

Easily choose mouse sensitivity to meet different needs

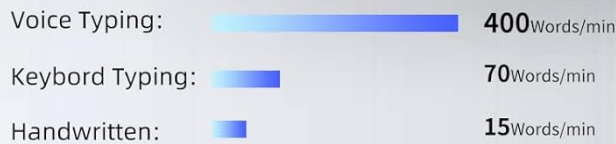
A visual representation of the adjustable DPI settings (1600-2400) for the DOSMONO AI Smart Voice Mouse, demonstrating how sensitivity can be customized for different needs.

### Voice Typing

Utilize the voice typing feature to convert spoken words into text. This significantly improves work efficiency, with a recognition rate of 98% and a typing speed of approximately 400 words per minute. Ensure the voice software is installed as described in the Setup section.



**98%** Accuracy **400** Words/min

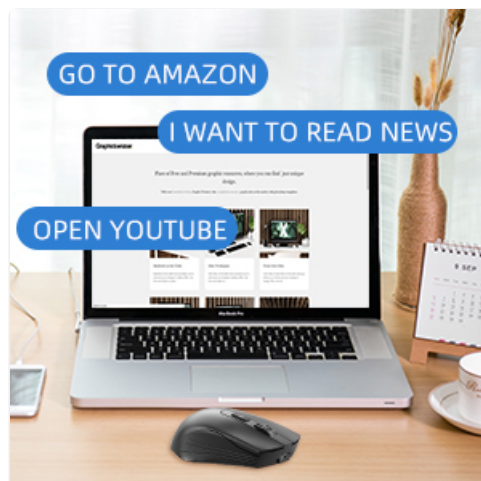


# Voice Typing and Voice Search Significantly improve your productivity

A computer screen displaying a voice typing interface, illustrating the high efficiency of the DOSMONO AI Smart Voice Mouse with 98% recognition accuracy and 400 words per minute typing speed.

## Voice Search

The AI smart mouse allows you to easily operate through voice commands, such as "search on Google" or "open YouTube." This feature streamlines your workflow and provides hands-free control over common tasks.



A computer screen displaying examples of voice commands, such as "GO TO AMAZON" and "OPEN YOUTUBE," demonstrating the voice search capability of the DOSMONO AI Smart Voice Mouse.

## Voice Translation

The mouse supports voice translation for 112 languages. After installing the necessary software (as mentioned in Setup), you can translate spoken phrases in real-time, facilitating cross-language communication.

**112 Languages Voice Translation**  
Cross-language communication  
without barriers

A graphic showing the voice translation feature of the DOSMONO AI Smart Voice Mouse, supporting 112 languages for cross-language communication.

## MAINTENANCE

- **Cleaning:** Use a soft, dry cloth to clean the mouse. For stubborn dirt, slightly dampen the cloth with water. Avoid using harsh chemicals or abrasive materials.
- **Storage:** When not in use for extended periods, turn off the mouse to conserve battery life. Store it in a cool, dry place away from direct sunlight and extreme temperatures.
- **Battery Care:** Recharge the mouse when the battery indicator shows low power. Avoid fully draining the battery frequently to prolong its lifespan.

## TROUBLESHOOTING

---

Problem	Possible Cause	Solution
Mouse not responding	<ul style="list-style-type: none"><li>o Battery low or depleted</li><li>o USB receiver not properly connected</li><li>o Mouse is turned off</li><li>o Interference from other wireless devices</li></ul>	<ul style="list-style-type: none"><li>o Charge the mouse</li><li>o Ensure USB receiver is firmly plugged in</li><li>o Turn on the mouse using the ON/OFF switch</li><li>o Move mouse closer to receiver or away from other wireless devices</li></ul>
Voice features not working	<ul style="list-style-type: none"><li>o Voice software not installed or running</li><li>o Microphone access denied</li><li>o Poor internet connection (for translation)</li></ul>	<ul style="list-style-type: none"><li>o Install/reinstall the voice software (long-press wheel button)</li><li>o Check system privacy settings for microphone access</li><li>o Ensure stable internet connection</li></ul>
Cursor movement is erratic	<ul style="list-style-type: none"><li>o Dirty optical sensor</li><li>o Using on an unsuitable surface</li><li>o Low battery</li></ul>	<ul style="list-style-type: none"><li>o Clean the optical sensor on the underside of the mouse</li><li>o Use on a mouse pad or a non-reflective, uniform surface</li><li>o Charge the mouse</li></ul>

## SPECIFICATIONS

---

<b>Product Dimensions</b>	4.55 x 2.82 x 1.51 inches
<b>Item Weight</b>	3.53 ounces
<b>Item Model Number</b>	C406
<b>Batteries</b>	1 Lithium Ion battery required (included)
<b>Connectivity Technology</b>	2.4GHz Wireless (USB Receiver)
<b>Special Feature</b>	Soundless, Voice Typing, Voice Translation, Voice Search
<b>Movement Detection Technology</b>	Trackball
<b>Adjustable DPI</b>	1600-2400 DPI
<b>Compatibility</b>	Windows, MAC Laptop/Desktop

## WARRANTY AND SUPPORT

---

For warranty information and technical support, please refer to the documentation included with your purchase or contact DOSMONO customer service directly. Contact details can typically be found on the manufacturer's official website or on the product packaging.

