

[Manuals.plus](#) /

> [Michael Kors](#) /

> Michael Kors Lexington Chronograph Watch User Manual

## Michael Kors MK7241

# Michael Kors Lexington Chronograph Watch User Manual

Model: MK7241

## INTRODUCTION

This manual provides essential information for the proper use, care, and maintenance of your Michael Kors Lexington Chronograph Watch, Model MK7241. Please read this manual thoroughly before using your watch to ensure optimal performance and longevity.

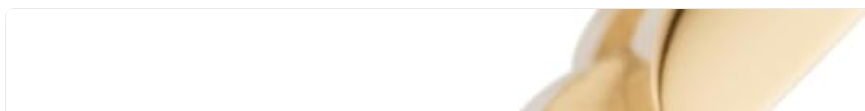
## PRODUCT OVERVIEW

The Michael Kors Lexington Chronograph Watch is a sophisticated timepiece designed for women, featuring a gold-tone stainless steel case and bracelet, a white mother-of-pearl dial, and chronograph functionality. It combines elegant design with practical features.





**Figure 1:** Front view of the Michael Kors Lexington Chronograph Watch, showcasing its gold-tone case, crystal-set bezel, white mother-of-pearl dial with Roman numerals and stick markers, and chronograph subdials.







**Figure 2:** Side view of the watch, highlighting the crown with the MK logo and the two chronograph pushers.

## SETUP AND INITIAL USE

---

### Setting the Time

1. Pull the crown (the knob on the side of the watch) out to the second click position.
2. Turn the crown clockwise or counter-clockwise to set the hour and minute hands to the correct time.
3. Push the crown back in to the normal position to start the watch.

### Setting the Date (if applicable)

If your watch features a date display, pull the crown out to the first click position and turn it to adjust the date. Push the crown back in when finished.

### Adjusting the Bracelet

The watch bracelet may need to be adjusted for a comfortable fit. This typically involves removing or adding links. It is recommended to have this done by a professional jeweler to avoid damage to the watch or bracelet.





**Figure 3:** Rear view of the watch, showing the deployment clasp with the Michael Kors branding, which can be adjusted for fit.

## OPERATING THE CHRONOGRAPH FUNCTION

Your Michael Kors Lexington watch features a chronograph, which acts as a stopwatch. It typically has two pushers on the side of the case, above and below the crown.

1. **Start/Stop:** Press the top pusher to start the chronograph. Press it again to stop the chronograph.
2. **Reset:** While the chronograph is stopped, press the bottom pusher to reset all chronograph hands to their zero positions.

*Note: For detailed instructions on specific chronograph sub-dial functions (e.g., 24-hour display, minute*

counter), refer to the full movement manual typically provided with the watch or available on the manufacturer's website.

## MAINTENANCE AND CARE

- **Cleaning:** Wipe the watch regularly with a soft, dry cloth to remove dust and dirt. For the metal bracelet, a slightly damp cloth can be used, followed by a dry cloth. Avoid using harsh chemicals or abrasive materials.
- **Water Resistance:** This watch is water-resistant up to 100 meters (10 ATM). This means it is suitable for bathing, swimming, snorkeling, and shallow diving. However, it is not suitable for high-impact water sports or deep-sea diving. **Do not operate the crown or pushers when the watch is wet or submerged.**
- **Temperature Extremes:** Avoid exposing your watch to extreme temperatures (hot or cold) or sudden temperature changes, as this can affect its accuracy and seals.
- **Magnetic Fields:** Keep the watch away from strong magnetic fields, which can interfere with the quartz movement.
- **Battery Replacement:** The watch is powered by a product-specific battery. When the battery runs low, the watch may stop or the second hand may jump in intervals. It is recommended to have the battery replaced by a qualified watch technician to ensure proper sealing and function.
- **Storage:** When not in use, store your watch in a cool, dry place, preferably in its original box or a watch case to protect it from dust and scratches.

## TROUBLESHOOTING

Problem	Possible Cause	Solution
Watch has stopped or is running slow.	Low battery.	Replace the battery.
Chronograph hands do not reset to zero.	Needs calibration or internal issue.	Consult a professional watch repair service.
Condensation inside the watch.	Exposure to extreme temperature changes or compromised water resistance.	Immediately take the watch to a professional for inspection and repair to prevent damage.
Bracelet is too tight or too loose.	Incorrect sizing.	Have the bracelet adjusted by a professional jeweler.

If you encounter issues not listed here or if the suggested solutions do not resolve the problem, please contact Michael Kors customer support or an authorized service center.

## SPECIFICATIONS

---

**Model Number:** MK7241

**Case Material:** Gold-tone Stainless Steel

**Case Diameter:** 38 mm

**Case Thickness:** 10 mm

**Band Material:** Gold-tone Stainless Steel

**Band Width:** 20 mm

**Movement:** Quartz Chronograph

**Dial:** White Mother-of-Pearl with Roman numerals and stick markers

**Crystal:** Scratch-resistant Mineral Glass

**Water Resistance:** 10 ATM (100 meters / 330 feet) - Suitable for bathing, swimming, snorkeling, shallow diving.

**Battery:** 1 product-specific battery (included)

**Product Dimensions (L x W x H):** 3.8 x 2 x 1.3 cm

**Item Weight:** 100 grams

**Department:** Women's

**Manufacturer:** Michael Kors

33 MM



38 MM



40 MM

43 MM

45 MM



Figure 4: Visual guide illustrating different watch case sizes on a wrist, including the 38mm size of this model.

## WARRANTY AND SUPPORT

For information regarding the warranty of your Michael Kors watch, please refer to the warranty card included with your purchase or visit the official Michael Kors website. Warranty terms and conditions may vary by region.

For customer support, service, or to find an authorized service center, please visit the Michael Kors official website or contact their customer service department directly. Keep your proof of purchase for warranty claims.



**Figure 5:** The Michael Kors presentation box, which typically contains the watch, user manual, and warranty information.

© 2023 Michael Kors. All rights reserved.

This manual is for informational purposes only. Specifications are subject to change without notice.