

KEMEI TX1

KEMEI TX1 Electric Foil Shaver User Manual

Model: TX1

INTRODUCTION

Thank you for choosing the KEMEI TX1 Electric Foil Shaver. This manual provides essential information for the safe operation, maintenance, and care of your new shaver. Please read these instructions thoroughly before first use and keep them for future reference.

PRODUCT OVERVIEW

The KEMEI TX1 is a professional cordless electric foil shaver designed for precise and comfortable facial beard trimming. It features an all-metal body, lithium-titanium blades, and convenient USB recharging.

Key Features:

- **Professional Design:** Ergonomically designed to fit facial contours for a comfortable shave.
- **Precision Trimmer:** Bevel cutter head design ensures a close and clean shaving experience.
- **3D Floating Knife Net:** Adapts to facial curves, suitable for various shaving needs, including bald heads.
- **Powerful Motor & Battery:** Equipped with a 5W high-power motor and a 1400mAh lithium battery, providing 120 minutes of use after a 2-hour charge.
- **USB Rechargeable:** Offers flexible charging options via USB.
- **Detachable Cutter Head:** Stainless steel cutter head is easily detachable for thorough cleaning and replacement.

What's in the Box:

The package typically includes the KEMEI TX1 Electric Foil Shaver, a USB charging cable, a cleaning brush, and a travel pouch.



KEMEI TX1 Electric Foil Shaver with included USB charging cable, cleaning brush, and travel pouch.



The compact KEMEI TX1 Shaver fits comfortably in hand, highlighting its portability.

SETUP

Initial Charging:

1. Before first use, ensure the shaver is fully charged.
2. Connect the USB charging cable to the shaver's charging port and to a compatible USB power source (e.g., computer, wall adapter).
3. The charging indicator light will illuminate. A full charge typically takes approximately 2 hours.
4. Once fully charged, the shaver provides up to 120 minutes of cordless operation.

Charging time:2h

Use time:120mins



Charging information for the KEMEI TX1 Shaver.

OPERATING INSTRUCTIONS

1. **Power On/Off:** Press the power button to turn the shaver on or off.
2. **Shaving Technique:** For best results, hold the shaver at a right angle to your skin and move it against the direction of hair growth. Use light pressure and stretch your skin with your free hand to ensure a smooth surface.
3. **Dry Shave:** This shaver is designed for dry shaving. Ensure your skin is clean and dry before use.
4. **For Longer Hair:** If you have longer facial hair, it is recommended to trim it shorter with a beard trimmer before using the foil shaver for a closer finish.

MAINTENANCE

Regular cleaning and proper maintenance will ensure optimal performance and extend the lifespan of your KEMEI TX1 shaver.

Cleaning the Cutter Head:

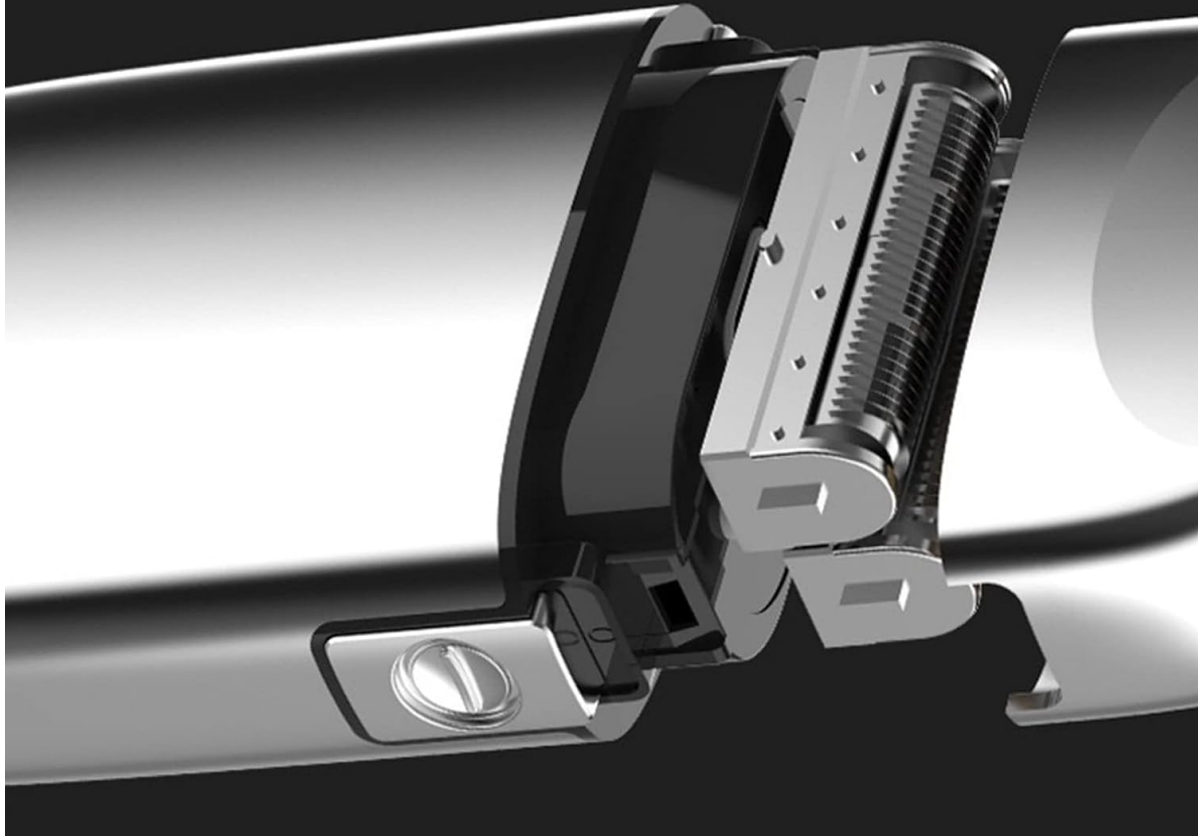
1. **Turn Off Shaver:** Ensure the shaver is turned off and disconnected from any charging cable before cleaning.

2. **Detach Cutter Head:** Press the release button (if applicable) or gently pull the cutter head upwards to detach it from the shaver body.
3. **Clean Blades:** Use the provided cleaning brush to remove hair clippings from the foil and the inner blades.
4. **Rinse (if applicable):** The detachable stainless steel cutter head can be rinsed with clean water. Ensure it is completely dry before reattaching. Do not rinse the shaver body.
5. **Reattach Cutter Head:** Align the cutter head with the shaver body and press down until it clicks securely into place.



Demonstration of detaching the cutter head for cleaning.

Detachable cutter head



View of the detachable cutter head and internal blade system.

Blade Replacement:

Over time, the blades and foil may wear down, affecting shaving performance. Replacement parts are available and can be installed by following the instructions provided with the replacement kit. Typically, this involves detaching the old cutter head and snapping a new one into place.

TROUBLESHOOTING

If you encounter issues with your KEMEI TX1 shaver, please refer to the following common solutions:

- **Shaver not turning on:** Ensure the shaver is fully charged. If the battery is low, connect it to the charger.
- **Poor shaving performance:** Clean the cutter head thoroughly to remove any trapped hair. Consider replacing the blades and foil if they are worn.
- **Unusual noise:** Check if the cutter head is properly attached and free from obstructions. Clean the shaver.
- **Charging issues:** Verify that the USB cable and power source are functioning correctly. Ensure the charging port is clean.

If the problem persists, please contact KEMEI customer support for further assistance.

SAFETY INFORMATION

Please observe the following safety precautions to prevent injury or damage to the product:

- Always test the shaver on a small area of skin before full use to check for sensitivity.
- Clean the shaver after each use to maintain hygiene and performance.
- Charge the shaver for 2 hours before the first use.
- Do not use the shaver near water (e.g., in a bath or shower) or while charging to prevent electrical hazards.
- Keep the shaver out of reach of children.
- Do not disassemble or attempt to repair the shaver yourself. Contact qualified personnel for service.
- Avoid dropping the shaver or subjecting it to strong impacts.

SPECIFICATIONS

Model Name	TX1
Item Model Number	TX1-S
Product Dimensions	4.52 x 2.55 x 1.06 inches
Item Weight	0.45 Kilograms (15.87 ounces)
Power Source	Battery Powered
Battery Type	1 Lithium Polymer battery (Rechargeable)
Battery Average Life	120 minutes
Charging Time	Approx. 2 hours
Head Type	Foil
Number of Blades	2
Blade Material	Stainless Steel
Color	Tx1 Silver
Recommended Uses	Beard
Additional Features	Dry Shave

PRODUCT VIDEO

Your browser does not support the video tag.

Official video demonstrating the KEMEI TX1 Electric Foil Shaver's features, operation, and cleaning process.

WARRANTY AND SUPPORT

For warranty information or technical support, please refer to the documentation included with your purchase or contact the retailer/manufacturer directly. Keep your proof of purchase for any warranty claims.

