

Logitech 960-001514

Logitech Brio 501 Full HD Webcam User Manual

Brand: Logitech | Model: 960-001514

INTRODUCTION

The Logitech Brio 501 Full HD Webcam is designed to enhance your video communication experience. It features advanced technologies such as automatic light correction, auto-framing, and dual noise-reduction microphones to ensure you are seen and heard clearly in any environment. The integrated privacy cover provides peace of mind when the webcam is not in use. This manual provides detailed instructions for setting up, operating, maintaining, and troubleshooting your Brio 501 webcam.

WHAT'S IN THE BOX

- Logitech Brio 501 Full HD Webcam
- USB-C Cable (attached)
- Monitor Mounting Clip



IN THE BOX

Image: Contents of the Logitech Brio 501 retail box, including the webcam, USB-C cable, and monitor mounting clip.

SETUP

Connecting the Webcam

1. Attach the monitor mounting clip to the bottom of the webcam. The webcam features a magnetic connection for easy attachment.
2. Connect the integrated USB-C cable from the webcam to an available USB-C port on your computer.
3. The webcam is plug-and-play and should be automatically recognized by your operating system (Windows, macOS, Chrome OS).

Mounting the Webcam

- Place the webcam on top of your monitor or laptop screen, ensuring the mounting clip securely grips the top edge.
- Adjust the angle of the webcam as needed. The mounting clip allows for flexible positioning.

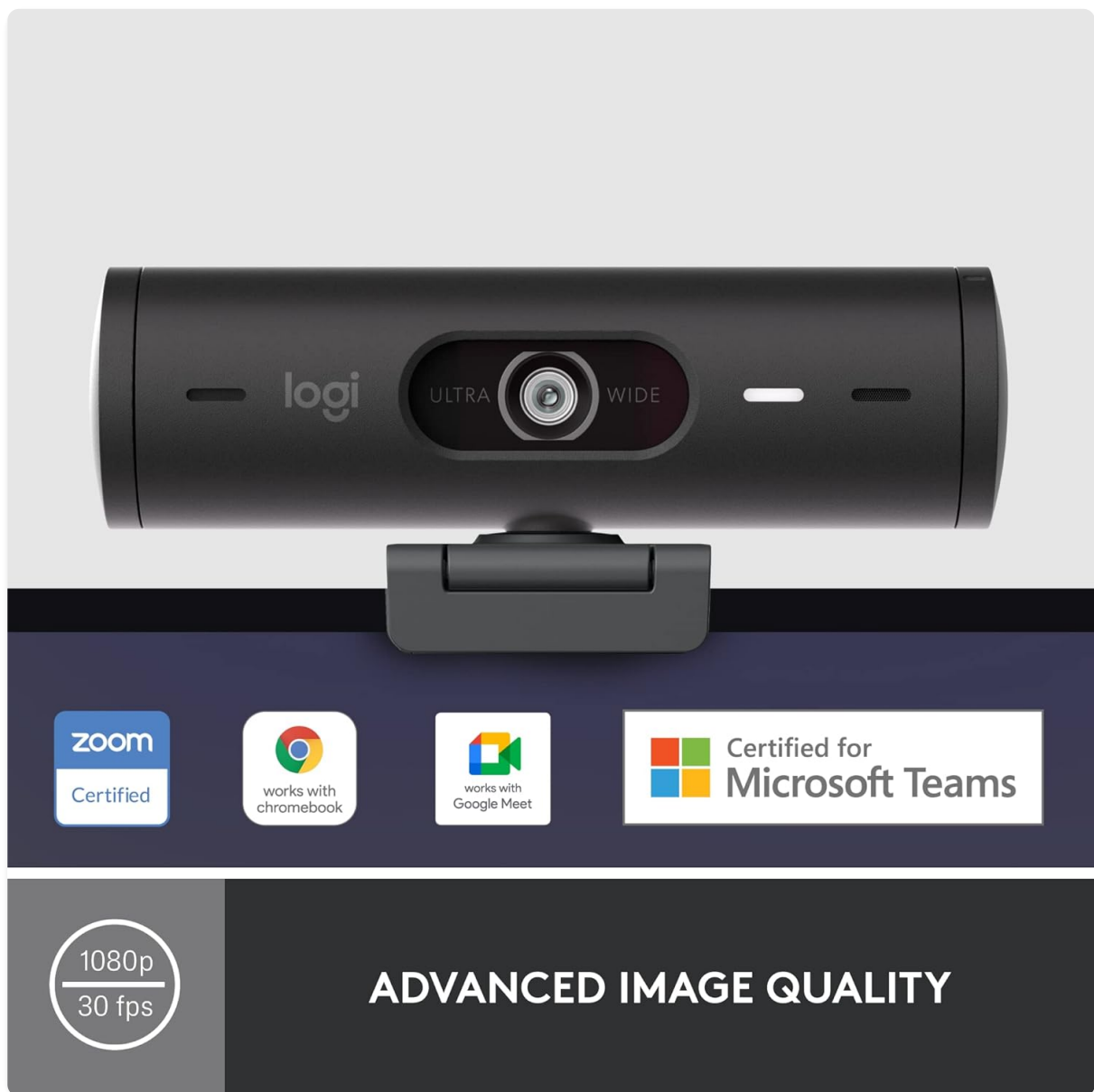


Image: The Logitech Brio 501 Webcam securely mounted on a laptop screen, highlighting its compatibility with various platforms.

Software Installation (Logi Tune)

For advanced customization and control over your webcam settings, download and install the Logi Tune software from the official Logitech website. Logi Tune allows you to:

- Zoom in or out
- Mute the microphone
- Adjust color and image resolution
- Manage auto-frame settings
- Set automatic updates for your webcam firmware

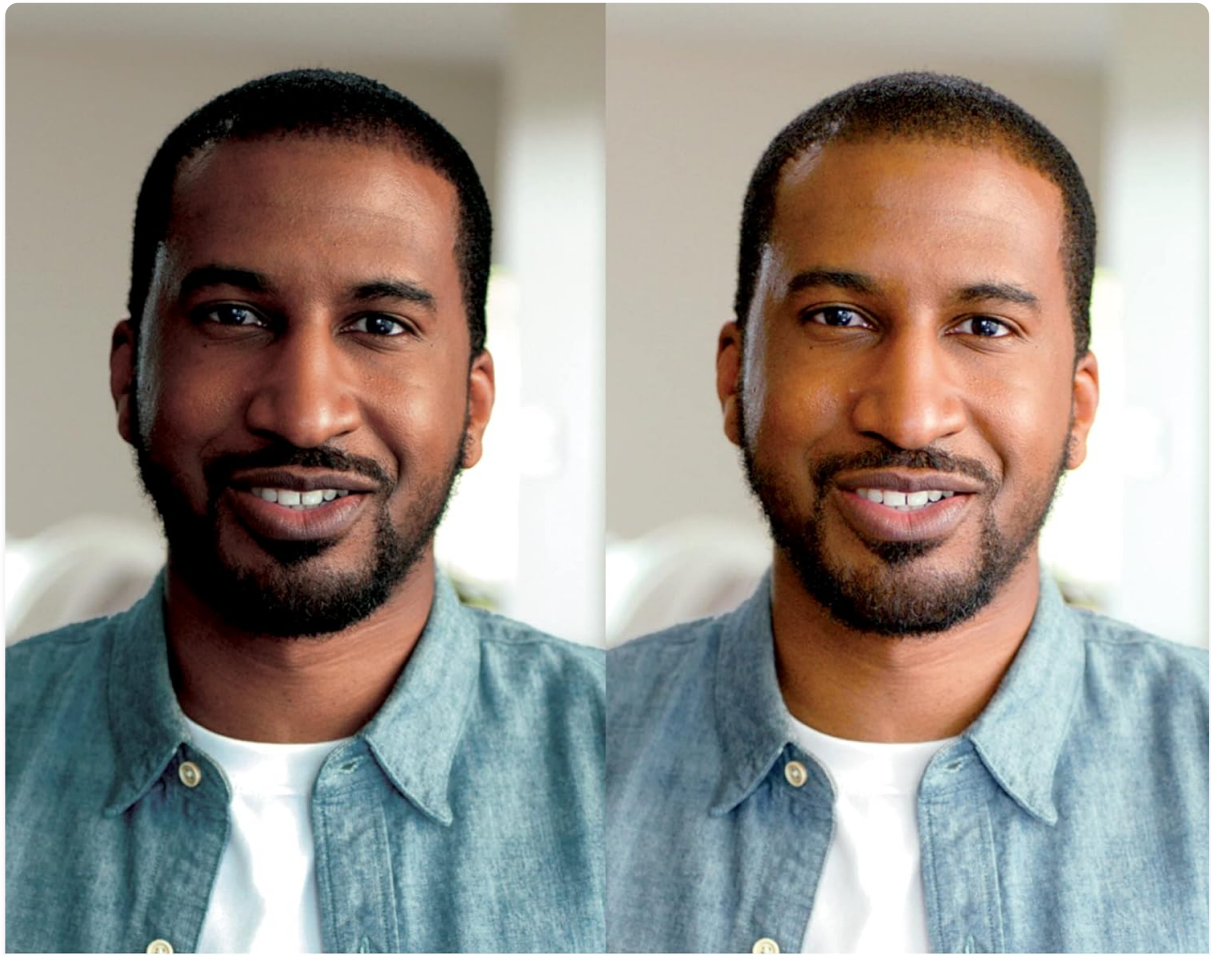


Image: The Logi Tune software interface, displaying various settings for the Logitech Brio 501 webcam, including field of view and image adjustments.

OPERATING INSTRUCTIONS

Auto Light Correction (RightLight 4)

The Brio 501 features RightLight 4 technology, which automatically adjusts to the lighting conditions in your environment. This ensures you are seen clearly, even in low-light or challenging lighting situations, without manual adjustment.

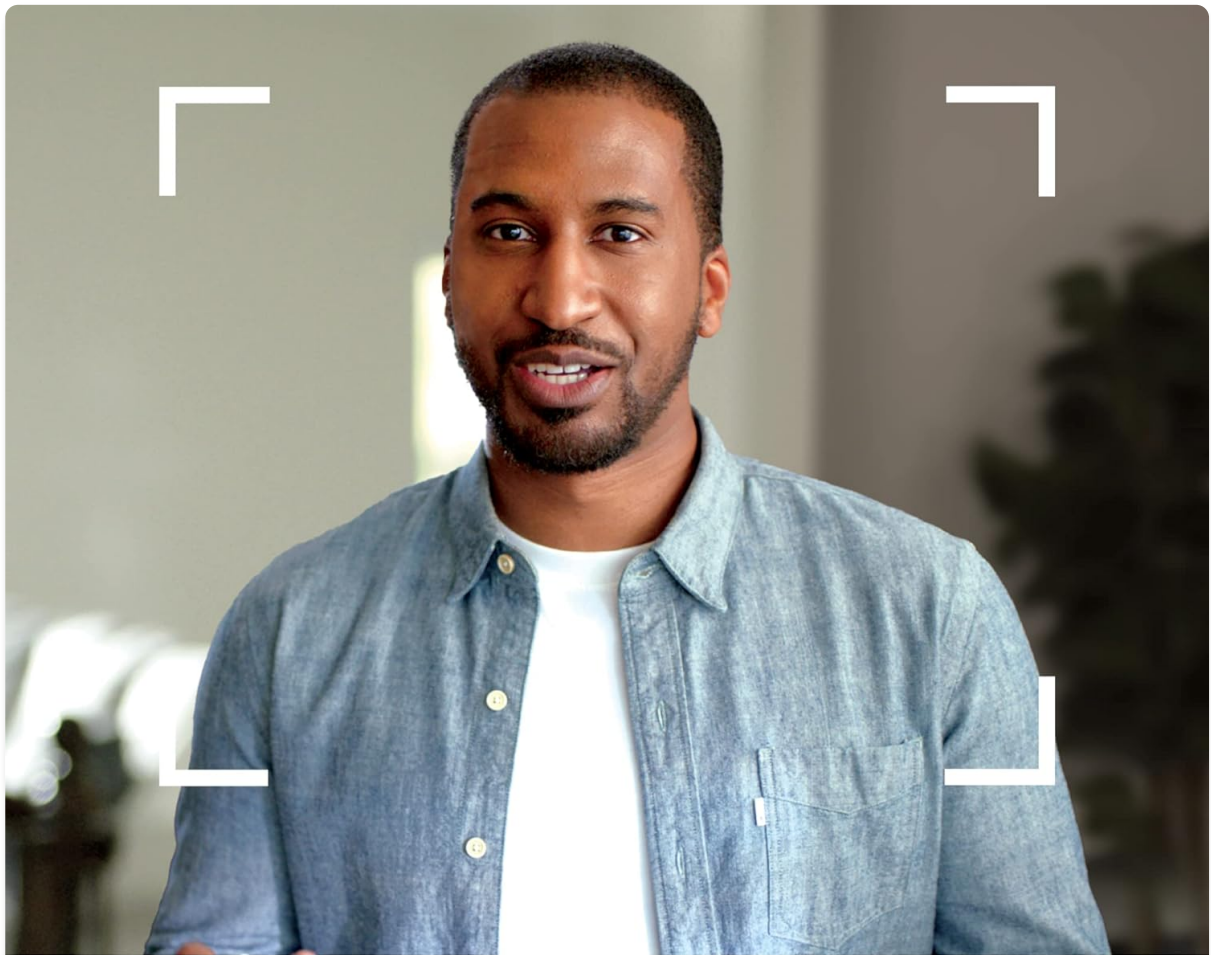


AUTO LIGHT CORRECTION

Image: A side-by-side comparison illustrating the effectiveness of Auto Light Correction, showing improved visibility in challenging lighting.

Auto-Framing (RightSight)

RightSight auto-framing technology keeps the video camera centered on you. This allows you to stand and move naturally during calls without leaving the frame. This feature can be managed via the Logi Tune software.



AUTO-FRAMING

Image: Auto-framing in action, demonstrating how the webcam keeps the speaker centered within the video frame during a call.

Show Mode

To present physical objects or documents on your desk, simply tilt the webcam down with one hand to activate Show Mode. This allows your audience to clearly see what you are presenting.



Image: Show Mode in use, where the webcam is tilted to display a document on a desk, facilitating presentations of physical items.

Dual Noise Reduction Microphones

The integrated dual noise-reduction microphones filter out background sound, ensuring your voice is heard clearly in noisy environments. This provides a more natural and authentic audio experience during calls.



Image: Visual representation of the webcam's noise-reducing microphones, showing sound waves being filtered for clearer audio.

Integrated Privacy Cover

For enhanced privacy, the Brio 501 includes an integrated privacy shutter. Simply rotate the side of the webcam to completely block the camera lens when not in use, ensuring your privacy between meetings.



INTEGRATED PRIVACY SHUTTER

Image: A hand closing the integrated privacy shutter on the webcam, demonstrating how to block the camera lens for privacy.

MAINTENANCE

To ensure the longevity and optimal performance of your Logitech Brio 501 Webcam, follow these maintenance guidelines:

- **Cleaning:** Use a soft, dry cloth to clean the camera lens and body. Avoid using abrasive cleaners or solvents that could damage the surfaces.
- **Storage:** When not in use, especially during travel, engage the privacy shutter to protect the lens. Store the webcam in a cool, dry place away from direct sunlight and extreme temperatures.
- **Cable Care:** Avoid sharp bends or kinks in the USB-C cable. Do not pull the cable forcefully to disconnect it from your computer.
- **Firmware Updates:** Regularly check for and install firmware updates via the Logi Tune software to ensure your webcam has the latest features and performance improvements.

TROUBLESHOOTING

If you encounter issues with your Logitech Brio 501 Webcam, try the following troubleshooting steps:

- **No Video/Audio:**
 - Ensure the USB-C cable is securely connected to both the webcam and your computer.
 - Verify that the privacy shutter is open.
 - Check your computer's privacy settings to ensure camera and microphone access is granted to applications.
 - Try connecting the webcam to a different USB-C port or a different computer to rule out port or system issues.
- **Poor Image Quality:**
 - Ensure the lens is clean and free from dust or smudges.
 - Check your lighting conditions. While RightLight 4 is effective, sufficient ambient light will always yield better results.
 - Adjust image settings (brightness, contrast, sharpness) in the Logi Tune software.
- **Poor Audio Quality:**
 - Ensure the webcam's microphone is selected as the default input device in your application settings.
 - Minimize background noise in your environment.
 - Adjust microphone volume levels in your computer's sound settings or Logi Tune.
- **Software Issues (Logi Tune):**
 - Restart the Logi Tune application or your computer.
 - Ensure Logi Tune is updated to the latest version.
 - Reinstall the Logi Tune software if problems persist.

SPECIFICATIONS

Feature	Detail
Model Number	960-001514
Max Video Resolution	Full HD 1080p
Frame Rate	1080p/30fps, 720p/60fps
Field of View (FOV)	90-Degree (adjustable via Logi Tune)
Microphones	Dual Noise Reduction Mics
Light Correction	RightLight 4 (Auto Light Correction)

Framing Technology	RightSight (Auto-Framing)
Privacy Feature	Integrated Privacy Cover
Connectivity	USB-C
Dimensions (LxWxH)	1.24 x 4.33 x 1.24 inches
Item Weight	4.3 ounces
Color	Black




WARRANTY & SUPPORT



The Logitech Brio 501 Full HD Webcam comes with a standard manufacturer's warranty. Please refer to the warranty information provided in your product packaging for specific terms and conditions.

For additional support, troubleshooting guides, and the full user manual, please visit the official Logitech support website or refer to the provided PDF document:

[Download User Manual \(PDF\)](#)

Related Documents - 960-001514

<div><div>BRIO 501</div><div>Setup Guide</div><div>Quick Installation</div><div></div><div>logitech</div></div>	<p>Logitech BRIO 501 Webcam Setup Guide</p> <p>A comprehensive setup guide for the Logitech BRIO 501 Full HD webcam, covering unboxing, mounting, connection, and software features like Logi Tune.</p>
<div><div>BRIO 500</div><div>Setup Guide</div><div></div><div></div><div>logitech</div></div>	<p>Logitech Brio 500 Setup Guide</p> <p>A comprehensive setup guide for the Logitech Brio 500 webcam, detailing its features, mounting options, connection steps, and software integration with Logi Tune.</p>
<div><div>MX BRIO</div><div>Setup Guide</div><div>Quick Installation</div><div>快速安装</div><div></div><div>logitech</div></div>	<p>Logitech MX BRIO Setup Guide: Crystal Clear Video for Your Workspace</p> <p>Learn how to set up and use your Logitech MX BRIO webcam with this comprehensive setup guide. Discover features like the ultrawide lens, dual noise-cancelling microphones, and easy mounting options for enhanced video conferencing.</p>

<div><div>User Manual of Product 1:</div><div>Logitech Brio Stream Webcam - Ultra 4K HD Video Calling, Video Conferencing, HD Auto-Light Correction, Wide Angle, Compatible with Microsoft Teams, Zoom, Google Meet on PC/Mac, Streaming - Black</div><div>User Manual of Product 2:</div><div>Logitech MX Master 3S - Wireless Performance Mouse with Ultra-High Precision, Ergo, 100% Track on Glass, Quiet Clicks, USB-C, Bluetooth, Windows, Linux, Chrome - Gray</div></div>	<p>Logitech Brio Stream Webcam & MX Master 3S Mouse User Manual Setup & Features</p> <p>Comprehensive user manual for Logitech Brio Stream 4K Webcam and MX Master 3S Wireless Performance Mouse. Learn about setup, features, MagSpeed scrolling, Darkfield 8000 DPI sensor, Logitech Flow, and more for enhanced productivity.</p>
<div><div>BRIO 300</div><div>Setup Guide</div><div></div><div>logitech</div></div>	<p>Logitech Brio 300 Setup Guide</p> <p>A comprehensive setup guide for the Logitech Brio 300 webcam, detailing its features, installation, and usage. Learn how to connect, position, and optimize your webcam for the best performance.</p>
<div><div>BRIO 300</div><div>Setup Guide</div><div></div><div>logitech</div></div>	<p>Logitech Brio 300 Setup Guide</p> <p>A comprehensive setup guide for the Logitech Brio 300 webcam, detailing installation, features, and specifications. Learn how to connect, position, and optimize your webcam for the best performance.</p>