

## Mitsubishi Electric MAC-587IF-E

# Mitsubishi Electric MAC-587IF-E Wi-Fi Module Instruction Manual

Model: MAC-587IF-E

## 1. PRODUCT OVERVIEW

---

The Mitsubishi Electric MAC-587IF-E Wi-Fi Module is an optional accessory designed for residential, commercial, and heating units. It provides remote access to MELCloud, Mitsubishi Electric's control interface, allowing you to manage your air conditioning system using smartphones, tablets, PCs, and voice assistants like Amazon Alexa and Google Home. This module facilitates convenient control and monitoring of your climate system from anywhere with an internet connection.



Image 1.1: The Mitsubishi Electric MAC-587IF-E Wi-Fi Module. This compact white module connects to your air conditioning unit, enabling smart control features.

Key features include:

- Remote control of your air conditioner via the Mitsubishi Electric Melcloud application.
- Compatibility with Mitsubishi Electric air conditioning units.
- Voice control capabilities through Amazon Alexa and Google Home.
- Access to your system via PC, tablet, or smartphone using cloud support for information transmission and reception.

**Note:** This module is compatible exclusively with Mitsubishi Electric products and not with Mitsubishi Heavy Industries units.

## 2. PACKAGE CONTENTS

---

Upon opening the package, ensure all components are present:

- 1x Mitsubishi Electric MAC-587IF-E Wi-Fi Module

## 3. SETUP INSTRUCTIONS

---

Follow these steps to install and configure your Wi-Fi module:

### 3.1 Physical Installation

1. **Locate the Connection Port:** Identify the dedicated connection port on your Mitsubishi Electric air conditioning indoor unit. This may require opening the unit's casing or accessing an internal compartment. Refer to your air conditioner's specific manual for the exact location.
2. **Connect the Module:** Carefully plug the cable from the MAC-587IF-E Wi-Fi Module into the designated port on your air conditioning unit. Ensure a secure connection.
3. **Position the Module:** Place the Wi-Fi module in a suitable location, ideally within the air conditioner unit's housing or nearby, ensuring it has good Wi-Fi signal reception.



Image 3.1: The MAC-587IF-E module with its connecting cable. This cable plugs directly into your compatible Mitsubishi Electric air conditioning unit.

## 3.2 Wi-Fi and Melcloud App Configuration

1. **Download Melcloud App:** Download the official MELCloud application from your smartphone's app store (iOS App Store or Google Play Store).
2. **Create Account:** Open the MELCloud app and create a new user account if you don't already have one.
3. **Add Device:** Follow the in-app instructions to add your new Wi-Fi module. This typically involves putting the module into pairing mode (often by pressing the 'MODE' button or a combination of buttons on the module) and connecting it to your home Wi-Fi network.
4. **Register Unit:** Once connected to Wi-Fi, register your air conditioning unit within the MELCloud app. You may need to input serial numbers or other identification details found on the module or your air conditioner.
5. **Test Connection:** After successful registration, test the connection by attempting to control your air conditioner through the MELCloud app.

## 4. OPERATING INSTRUCTIONS

---

Once the MAC-587IF-E module is installed and configured, you can control your air conditioning unit using the MELCloud app or compatible voice assistants.

### 4.1 Using the MELCloud Application

The MELCloud app provides a comprehensive interface for managing your air conditioner:

- **Temperature Control:** Adjust the desired temperature.
- **Operating Modes:** Switch between heating, cooling, fan, and dry modes.
- **Fan Speed:** Modify the fan speed settings.
- **Timer Functions:** Set schedules for your unit to turn on/off or change settings at specific times.
- **Monitoring:** View current room temperature and unit status.

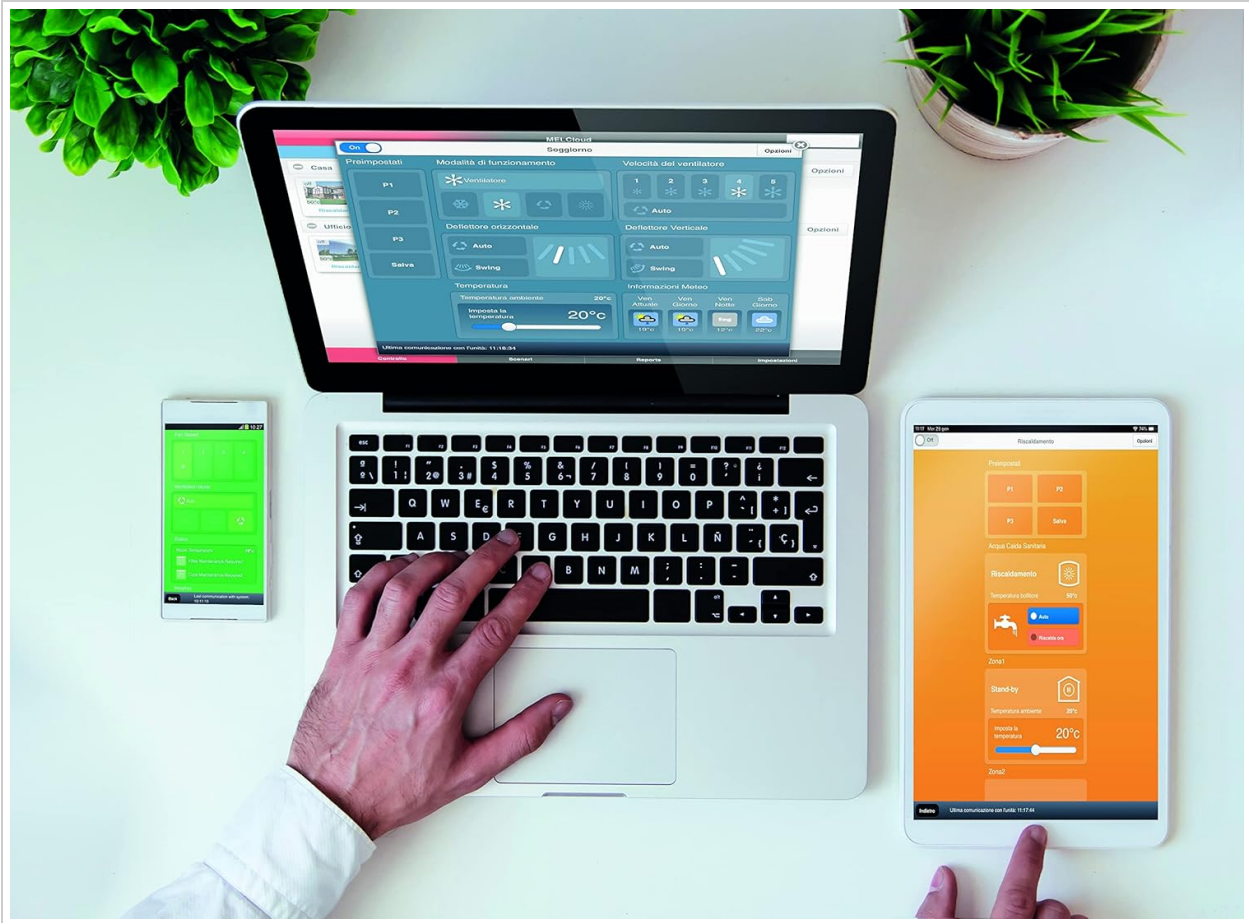


Image 4.1: The MELCloud application interface displayed across a laptop, smartphone, and tablet, demonstrating its multi-device accessibility for controlling air conditioning units.



Image 4.2: A user interacting with the MELCloud application on a tablet, illustrating the ease of remote control for their air conditioning system.

## 4.2 Voice Control with Amazon Alexa and Google Home

To enable voice control, link your MELCloud account with Amazon Alexa or Google Home:

1. **Open Voice Assistant App:** Open the Amazon Alexa app or Google Home app on your smartphone.
2. **Enable Skill/Action:** Search for and enable the 'MELCloud' skill (for Alexa) or action (for Google Home).
3. **Link Account:** Follow the prompts to link your MELCloud account with your voice assistant account.
4. **Discover Devices:** Once linked, ask your voice assistant to discover new devices. Your air conditioner should appear as a controllable device.

Common voice commands include:

- "Alexa, set [Air Conditioner Name] to 22 degrees."
- "Hey Google, turn on [Air Conditioner Name]."
- "Alexa, what is the temperature of [Air Conditioner Name]?"
- "Hey Google, set [Air Conditioner Name] to heat mode."

## 5. MAINTENANCE

---

The MAC-587IF-E Wi-Fi Module requires minimal maintenance. To ensure optimal performance:

- **Keep Firmware Updated:** Regularly check the MELCloud app for any available firmware updates for the module and install them as recommended.
- **Stable Wi-Fi Connection:** Ensure your home Wi-Fi network is stable and the module is within good signal range of your router.
- **Cleanliness:** Keep the module free from dust and debris. Use a soft, dry cloth for cleaning. Do not use liquid cleaners.

## 6. TROUBLESHOOTING

---

If you encounter issues with your Wi-Fi module, consider the following troubleshooting steps:

- **Module Not Connecting to Wi-Fi:**
  - Ensure your Wi-Fi network is 2.4 GHz, as some modules may not support 5 GHz.
  - Check the Wi-Fi signal strength at the module's location. Move the router closer or consider a Wi-Fi extender if necessary.
  - Verify your Wi-Fi password is entered correctly in the MELCloud app.
  - Press the 'RESET' button on the module (if available) to restart the Wi-Fi connection process.
- **MELCloud App Not Responding/Controlling Unit:**
  - Check your internet connection on your smartphone/PC.
  - Ensure the air conditioning unit is powered on.
  - Log out and log back into the MELCloud app.
  - Restart the MELCloud app or reinstall it if issues persist.
  - Verify the module's status indicator lights (ERR, NET, MODE, UNIT) for any error codes. Refer to the module's quick start guide for indicator meanings.
- **Voice Control Not Working:**
  - Confirm that your MELCloud account is correctly linked to Amazon Alexa or Google Home.
  - Ensure your voice assistant device is online and responsive.

- Try re-discovering devices through the Alexa or Google Home app.
- Use the exact device name you assigned in the MELCloud app when giving voice commands.
- **Module Reset:** If all else fails, locate the 'RESET' button on the module. Press and hold it for several seconds (refer to the module's specific instructions for exact duration) to perform a factory reset. You will then need to reconfigure the Wi-Fi connection and re-add the device to your MELCloud account.

## 7. SPECIFICATIONS

---

Feature	Specification
Model Number	MAC-587IF-E
Dimensions (L x W x H)	13 x 6 x 17 cm
Weight	300 g
Connectivity Technology	Wi-Fi
Compatible Devices	Mitsubishi Electric Air Conditioners (Residential, Commercial, Heating Units)
Maximum Supported Devices	1 (per module)
Controller Type	Voice Control
Maximum Range	10 Meters (Wi-Fi dependent)
Buttons	6 (including Reset, Mode)
Color	White

## 8. WARRANTY INFORMATION

---

Warranty details for the Mitsubishi Electric MAC-587IF-E Wi-Fi Module are typically provided at the point of purchase or included with the product packaging. Please refer to your sales receipt or the documentation accompanying your module for specific warranty terms and conditions. For warranty claims or inquiries, contact your retailer or Mitsubishi Electric customer support.

## 9. SUPPORT

---

For further assistance or technical support regarding your Mitsubishi Electric MAC-587IF-E Wi-Fi Module, please utilize the following resources:

- **MELCloud Application:** The MELCloud app often includes a help section, FAQs, or direct contact options for support.
- **Mitsubishi Electric Website:** Visit the official Mitsubishi Electric website for product manuals, FAQs, and customer service contact information.
- **Authorized Dealer/Installer:** If the module was installed by a professional, contact them for installation-specific support.

