

[Manuals.plus](#) /

› [WOSODA](#) /

› WOSODA G200 Trail Camera User Manual

WOSODA G200

WOSODA G200 Trail Camera User Manual

Model: G200

1. INTRODUCTION AND OVERVIEW

Thank you for choosing the WOSODA G200 Trail Camera. This device is designed for reliable wildlife monitoring, outdoor scouting, and security applications, capturing high-resolution photos and videos with advanced night vision capabilities. Please read this manual thoroughly before operating the camera to ensure optimal performance and longevity.



Image: Two WOSODA G200 Trail Cameras, showing their camouflage design and included 32GB SD cards.

Key Features:

- **Fast Trigger Speed:** Captures motion in 0.3 seconds, with a trigger distance up to 60 feet.
- **High-Resolution Imaging:** Records 30 MP still images and Full HD 1080P videos.
- **Advanced Night Vision:** Equipped with upgraded infrared LEDs (850nm Low Glow IR technology) for clear black and white shots without disturbing wildlife.
- **Concealed Design:** Mimetic appearance blends into natural environments, supported by mounting straps and stand mount.
- **Waterproof Design:** Durable construction suitable for outdoor use.
- **Versatile Functions:** Includes Time Switch, Timer, and Time Stamp functions for various monitoring needs.

2. PACKAGE CONTENTS

Please verify that all items listed below are included in your package:



Image: A visual representation of all components included in the WOSODA G200 Trail Camera package.

- WOSODA G200 Trail Camera (x2)
- User Manual (x2)
- Mounting Belts (x2)
- Stand Mount (x2)
- USB Cables (x2)
- 32GB SD Cards (x2)
- Screws (for wall mount, x2 sets)

3. SETUP GUIDE

3.1. Battery Installation

The WOSODA G200 Trail Camera requires 8 AA batteries (not included). For optimal performance and extended battery life, especially in colder conditions, it is recommended to use high-quality alkaline or rechargeable AA batteries.

1. Open the camera casing by unlatching the side clips.
2. Locate the battery compartment inside the camera.
3. Insert 8 AA batteries, ensuring correct polarity (+/-) as indicated within the compartment.
4. Close the battery compartment securely.

3.2. SD Card Insertion

The camera supports standard SD cards. Two 32GB SD cards are included with your purchase.



Image: Step-by-step guide on inserting the SD card into the camera.

1. Ensure the camera is powered off.
2. Locate the SD card slot, typically on the side or bottom of the camera's internal unit.
3. Insert the SD card with the metal contacts facing down until it clicks into place.
4. To remove, gently push the card in until it springs out.

Note: It is recommended to format the SD card within the camera before first use and periodically to ensure optimal performance and prevent data corruption.

3.3. Mounting the Camera

The camera can be mounted using the included straps or stand mount, or wall-mounted using screws.



Image: A WOSODA G200 Trail Camera securely mounted on a tree, blending into the natural surroundings.

- **Using Mounting Belt:** Thread the provided belt through the slots on the back of the camera and secure it around a tree or pole. Adjust for desired angle.
- **Using Stand Mount:** Attach the stand mount to the camera's base and then secure the mount to a flat surface or stake.
- **Wall Mounting:** Use the provided screws and wall mounts to fix the camera to a wall or other suitable structure.

Tip: Position the camera to avoid direct sunlight and ensure a clear view of the desired monitoring area. Consider

the trigger distance (up to 60ft) when placing.

4. OPERATING INSTRUCTIONS

4.1. Powering On/Off

- To power on, slide the mode switch to the "ON" position. The camera will enter monitoring mode after a brief startup sequence.
- To power off, slide the mode switch to the "OFF" position.

4.2. Mode Selection and Settings

The camera typically has modes such as Photo, Video, and Photo+Video. Use the internal controls to navigate the menu and adjust settings.

- **Photo Mode:** Captures still images (up to 30 MP).
- **Video Mode:** Records video clips (1080P HD).
- **Photo+Video Mode:** Captures a still image followed by a video clip upon detection.

Common Settings to Configure:

- **Resolution:** Set photo (e.g., 30MP, 24MP) and video (e.g., 1080P) quality.
- **Trigger Interval:** Define the delay between detections (e.g., 5s, 15s, 30s, 1min, 5min).
- **PIR Sensitivity:** Adjust the motion sensor's sensitivity (High, Medium, Low) to reduce false triggers from leaves or grass.
- **Time Stamp:** Enable or disable the date, time, and temperature overlay on images/videos.
- **Time Switch/Timer:** Schedule specific times for the camera to be active.
- **Burst Photo:** Set the number of photos taken per trigger (e.g., 1, 3).

4.3. Viewing Captured Media

You can view photos and videos directly on the camera's screen (if available) or by transferring them to a computer.

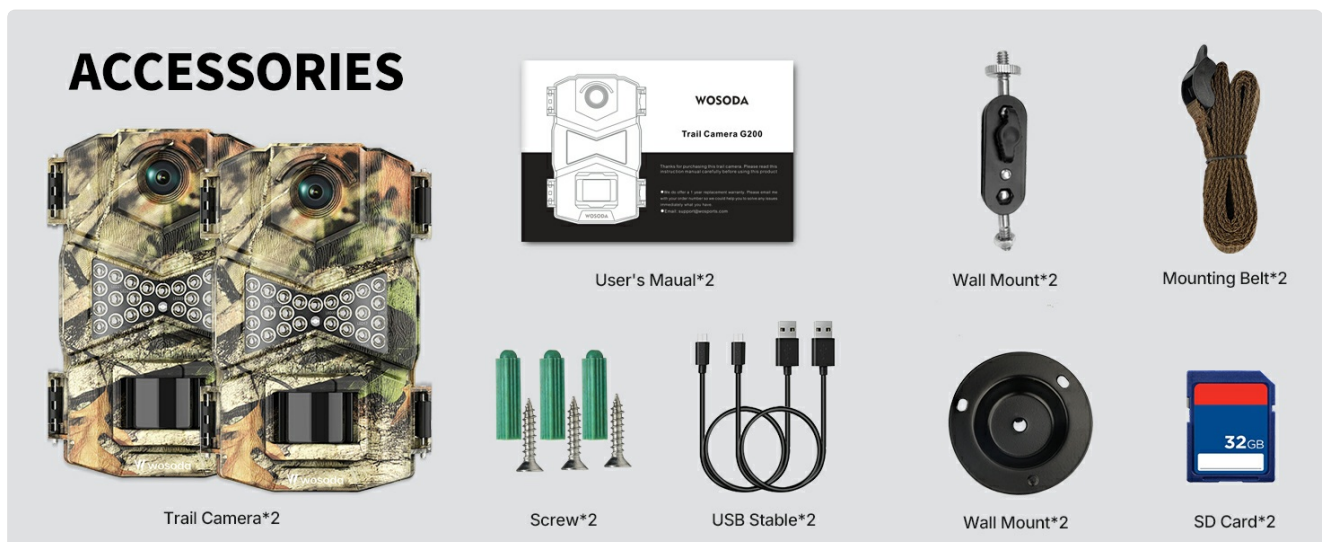


Image: Methods for viewing captured photos and videos from the trail camera.

- **On Camera:** Use the playback mode on the camera's internal screen and navigation buttons to review media.
- **Via USB Cable:** Connect the camera to your computer using the provided USB cable. The camera will appear as a removable disk, allowing you to access and transfer files.

- **Using SD Card Reader:** Remove the SD card from the camera and insert it into an SD card reader connected to your computer. This allows direct access to the files.

Note: Videos are saved as AVI files. Ensure your computer has compatible software to play AVI files.

5. MAINTENANCE

Proper maintenance ensures the longevity and optimal performance of your WOSODA G200 Trail Camera.

- **Cleaning:**
 - Gently wipe the camera lens and PIR sensor window with a soft, lint-free cloth to remove dust, dirt, or smudges.
 - Clean the camera body with a damp cloth. Avoid harsh chemicals or abrasive materials.
- **Battery Management:**
 - Replace batteries when the low battery indicator appears or when performance degrades.
 - Remove batteries if the camera will not be used for an extended period to prevent leakage.
 - Ensure the battery compartment seals properly to prevent moisture ingress.
- **SD Card Care:**
 - Periodically format the SD card using the camera's menu function to maintain performance and clear old data.
 - Avoid removing the SD card while the camera is powered on or recording.
- **Water Resistance:** The camera has an IP54 rating, meaning it is protected from dust and splashing water. Ensure all latches are securely closed to maintain water resistance. Avoid submerging the camera in water.

6. TROUBLESHOOTING

If you encounter issues with your WOSODA G200 Trail Camera, please refer to the following common problems and solutions:

Problem	Possible Cause	Solution
Camera not powering on.	Low or dead batteries; incorrect battery polarity; faulty batteries.	Replace with fresh, high-quality AA batteries. Ensure correct +/- orientation. Test batteries.
Camera not triggering/capturing.	PIR sensitivity too low; trigger interval too long; object out of range; SD card full or corrupted.	Increase PIR sensitivity. Shorten trigger interval. Ensure object is within 60ft. Format or replace SD card.
Poor night vision images/videos.	Obstruction in front of IR LEDs; low battery power; object too far.	Clear any obstructions. Replace batteries. Ensure object is within effective night vision range (60ft).
Date/Time stamp incorrect.	Time settings not configured or reset.	Access camera settings and set the correct date and time.
Moisture inside camera.	Battery compartment not sealed properly; extreme humidity.	Ensure all latches are securely closed. Open camera in a dry environment to air out. Consider desiccant packets if humidity is a persistent issue.

7. SPECIFICATIONS

Detailed technical specifications for the WOSODA G200 Trail Camera:

Feature	Detail
Brand	WOSODA
Model Name	G200
Effective Still Resolution	30 MP
Effective Video Resolution	1080 Pixels (Full HD)
Max Shutter Speed	0.3 seconds (Trigger Speed)
Night Vision Range	60 Feet
Wireless Communication Technology	IR (Infrared)
Connectivity Protocol	SD card
Flash Memory Type	SD
Water Resistance Level	Waterproof (IP54)
Power Source	AC/DC (Requires 8 AA batteries, not included)
Material	Acrylonitrile Butadiene Styrene (ABS)
Item Dimensions L x W x H	5.59 x 3.34 x 2.95 inches
Item Weight	2.23 pounds
Included Components	Belts, Stand Mount, SD Cards
Recommended Uses	Game, Hunting, Outdoor, Trail

8. WARRANTY AND SUPPORT

WOSODA is committed to providing high-quality products. For any questions, concerns, or technical assistance regarding your G200 Trail Camera, please contact WOSODA customer support through the retailer's platform or the official WOSODA website.

Return Policy: This product is typically eligible for a 30-day return/replacement policy from the date of purchase. Please refer to your purchase platform's specific return guidelines for detailed information.

For more information and updates, visit the official WOSODA store: [WOSODA Store on Amazon](#).

