

## Manuals+

[Q & A](#) | [Deep Search](#) | [Upload](#)

### Manuals.plus /

› [Hotsmtbang](#) /

› Hotsmtbang Replacement Remote Control for Aiwa Stereo Systems (RC-6AS14, RC-TN606, RC-TZ650, RC-TZ9100MF, NSX-A10, CX-NA10)

## Hotsmtbang Replacement Remote Control

# Hotsmtbang Replacement Remote Control Instruction Manual

**Model:** Replacement Remote Control

**Brand:** Hotsmtbang

## 1. INTRODUCTION

This manual provides instructions for the setup, operation, and maintenance of your Hotsmtbang Replacement Remote Control. This remote is designed to be compatible with various Aiwa Compact Disc Carry Stereo Component Systems, including models RC-6AS14, RC-TN606, RC-TZ650, RC-TZ9100MF, NSX-A10, and CX-NA10.

The remote control is pre-programmed and requires no additional setup or coding. Simply insert batteries, and it will be ready for use.

### Package Contents:

- 1 x Hotsmtbang Replacement Remote Control

*Note: Batteries and additional instructions are not included in the package.*

## 2. SETUP: BATTERY INSTALLATION

The remote control requires two (2) AAA batteries for operation. Batteries are not included and must be purchased separately.

1. **Locate the Battery Compartment:** Turn the remote control over to its back. The battery compartment cover is typically located on the lower half of the remote.
2. **Remove the Battery Cover:** Gently slide the battery compartment cover downwards or press the latch and lift to remove it.



Figure 2.1: Back of the remote control with the battery cover in place.

- 3. Insert Batteries:** Insert two (2) AAA batteries into the compartment, ensuring that the positive (+) and negative (-) terminals align correctly with the markings inside the compartment. Incorrect battery orientation can prevent the remote from functioning.

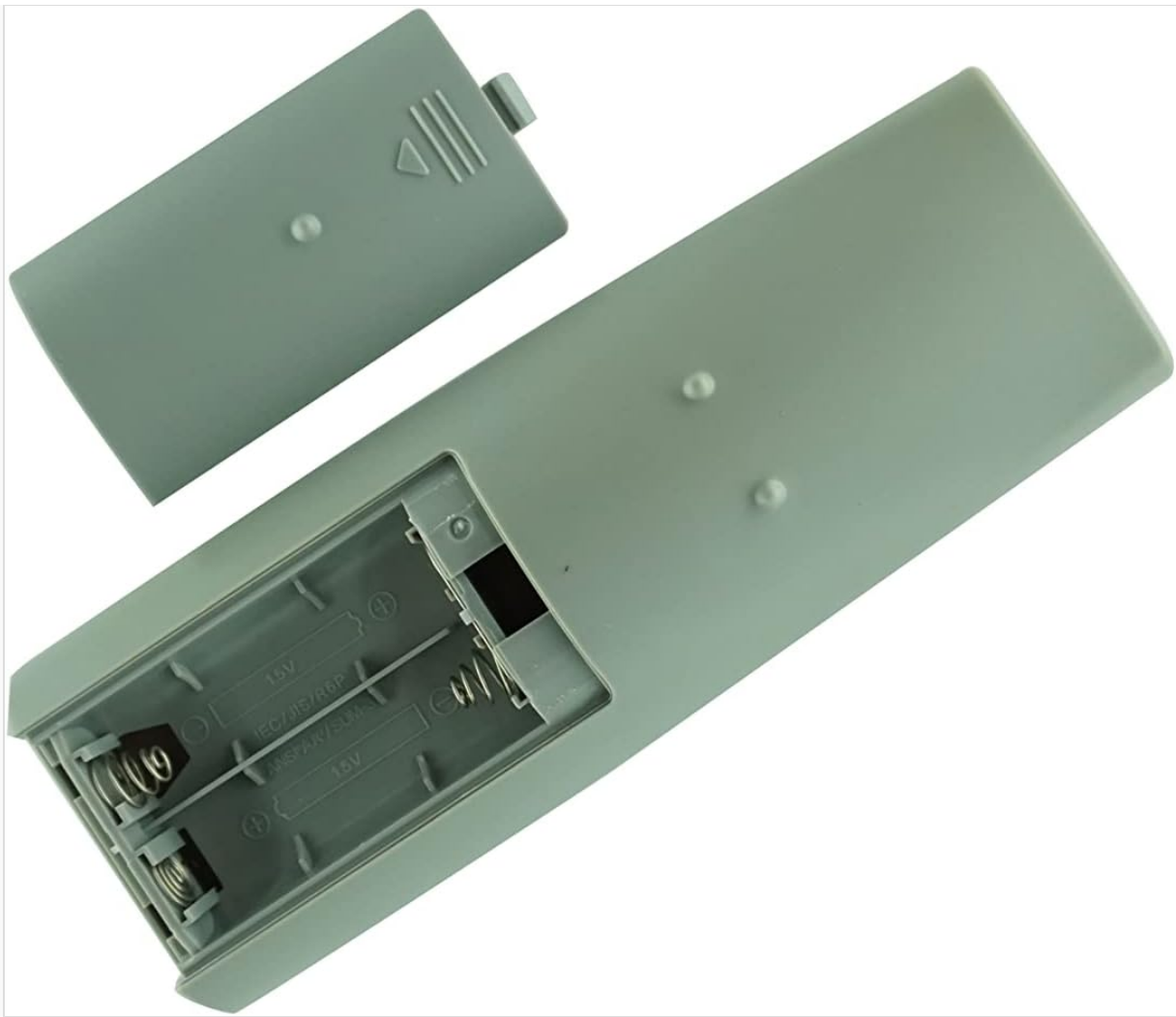


Figure 2.2: Battery compartment with cover removed, showing where to insert AAA batteries.

- 4. Replace the Battery Cover:** Slide the battery compartment cover back into place until it clicks securely.

Once batteries are correctly installed, the remote control is ready for immediate use with your compatible Aiwa stereo system.

### 3. OPERATING THE REMOTE CONTROL

This Hotsmtbang replacement remote control is designed for simplicity and direct functionality. No programming or pairing is required. It operates using infrared (IR) technology.



Figure 3.1: Front view of the remote control with its buttons.

### Basic Operation:

- **Point and Press:** Point the front end of the remote control directly towards the infrared receiver on your Aiwa stereo component system.
- **Button Functions:** Press the desired button on the remote to control the corresponding function on your stereo system (e.g., Power, Volume Up/Down, Track Skip, Play/Pause). The remote features 5 buttons for essential controls.
- **Line of Sight:** Ensure there are no obstructions between the remote control and the stereo system's IR receiver for optimal performance.

## 4. MAINTENANCE

### Battery Replacement:

Replace the AAA batteries when the remote control's responsiveness decreases or it stops functioning. Refer to Section 2 for battery installation instructions. Always replace both batteries at the same time with new ones.

### Cleaning:

To clean the remote control, use a soft, dry cloth. For stubborn dirt, slightly dampen the cloth with water or a mild, non-abrasive cleaner. Avoid using harsh chemicals or abrasive materials, as these can damage the remote's surface or internal components.

### Storage:

When not in use for extended periods, it is recommended to remove the batteries to prevent leakage, which can damage the remote control.

## 5. TROUBLESHOOTING

- **Remote Not Responding:**

- Ensure batteries are inserted correctly with the correct polarity (+/-).
- Replace old batteries with new AAA batteries.
- Check for any obstructions between the remote and the stereo system's IR receiver.
- Ensure you are within the effective range and pointing the remote directly at the stereo system.

- **Intermittent Functionality:**

- This often indicates low battery power. Replace the batteries.
- Verify that the remote's infrared emitter (usually at the front tip) is clean and unobstructed.

If the remote control still does not function after following these steps, it may indicate a fault with the remote itself or the stereo system's IR receiver.

## 6. SPECIFICATIONS

<b>Brand</b>	Hotsmtbang
<b>Model</b>	Replacement Remote Control
<b>Compatible Devices</b>	Aiwa Compact Disc Carry Stereo Component Systems (RC-6AS14, RC-TN606, RC-TZ650, RC-TZ9100MF, NSX-A10, CX-NA10)
<b>Connectivity Technology</b>	Infrared (IR)
<b>Special Feature</b>	No Programming Required
<b>Number of Buttons</b>	5
<b>Controller Type</b>	Button Control
<b>Battery Type</b>	2 x AAA batteries (not included)

## 7. WARRANTY AND SUPPORT

For information regarding warranty coverage or technical support, please refer to the retailer or the manufacturer's official website. Specific warranty details are typically provided at the point of purchase or within the product packaging.