

[Manuals.plus](#) /

> [HigherDOSE](#) /

> HigherDOSE Red Light Face Mask - Model MASK-V1 Instruction Manual

HigherDOSE MASK-V1

HigherDOSE Red Light Face Mask - Model MASK-V1 Instruction Manual

Brand: HigherDOSE | Model: MASK-V1

INTRODUCTION

This manual provides comprehensive instructions for the safe and effective use of your HigherDOSE Red Light Face Mask, Model MASK-V1. This FDA-cleared device utilizes red and near-infrared light therapy to support skin rejuvenation. Please read this manual thoroughly before first use and retain it for future reference.

SAFETY INFORMATION

Please refer to the safety information provided with your product.

PRODUCT COMPONENTS

The HigherDOSE Red Light Face Mask (MASK-V1) includes:

- Red Light Face Mask (Medical-grade silicone)
- Controller/Power Unit
- Charging Cable (USB-C)
- Storage Bag
- User Guide



Image: The HigherDOSE Red Light Face Mask, a flexible, light blue silicone mask with white adjustable straps, shown in use outdoors.

SETUP

1. **Charge the Device:** Connect the charging cable to the controller/power unit and a suitable USB power source. Ensure the device is fully charged before first use.
2. **Adjust the Mask:** The mask features adjustable straps to ensure a comfortable and secure fit on your face. Adjust the straps to mold the mask to your facial contours.
3. **Prepare Skin:** Ensure your face is freshly cleansed. For enhanced results, consider applying a light-activated serum before use.

OPERATING INSTRUCTIONS

The HigherDOSE Red Light Face Mask is designed for ease of use.

1. **Power On:** Press and hold the power button on the controller/power unit for a few seconds until the red lights

illuminate.

2. **Select Session Duration:** The device offers preset session durations (e.g., 10 or 20 minutes). Select your desired duration using the controls on the unit.
3. **Wear the Mask:** Place the mask comfortably on your face, ensuring the red and near-infrared LEDs are positioned to cover the desired treatment areas. The flexible design allows for movement during sessions.
4. **Relax and Enjoy:** Allow the mask to complete its session. The device will automatically shut off once the selected time has elapsed.
5. **Post-Session Care:** After the session, you may apply your regular skincare products.



Image: A woman wearing the light blue HigherDOSE Red Light Face Mask, which emits a red glow, demonstrating its use.

Recommended Usage

- For optimal results, use the mask on a freshly cleansed face.
- Sessions can be 10 or 20 minutes long.
- The mask is designed to be worn hands-free, allowing you to perform other activities during your session.

MAINTENANCE

To ensure the longevity and hygiene of your HigherDOSE Red Light Face Mask:

- **Cleaning:** The medical-grade silicone material is easy to clean. Wipe the mask with a soft, damp cloth after each use. Do not submerge the device in water.
- **Storage:** Store the mask in the provided storage bag in a cool, dry place away from direct sunlight.
- **Charging:** Recharge the device as needed. Avoid overcharging for extended periods.

TROUBLESHOOTING

If your mask is not functioning as expected, consider the following:

- **Device not turning on:** Ensure the device is fully charged. Check the connection of the charging cable to the controller/power unit.
- **Lights not illuminating:** Verify the device is powered on. If fully charged and powered on, and lights still do not work, contact customer support.
- **Discomfort during use:** Adjust the straps to ensure a comfortable fit. The flexible silicone should conform to your face without excessive pressure.

SPECIFICATIONS

Brand	HigherDOSE
Model Number	MASK-V1
Product Dimensions	13 x 2.5 x 9.5 inches
Item Weight	3.22 Pounds
LED Bulbs	62 LED bulbs
Red Light Wavelength	630nm
Near Infrared Wavelength	830nm
Material	Medical grade silicone
Battery	1 Lithium Ion battery required
UPC	860006793548

WARRANTY AND SUPPORT

HigherDOSE products typically come with a manufacturer's warranty. Please refer to the warranty card included in your product packaging or visit the official HigherDOSE website for detailed warranty information and customer support contacts.

For further assistance, you may visit the [HigherDOSE Store on Amazon](#).

PRODUCT MEDIA



A person wearing the flexible, light blue HigherDOSE Red Light Face Mask with white adjustable straps, shown outdoors with a blue sky and ocean in the background.

CLINICALLY PROVEN TO:

- REDUCE FINE LINES & WRINKLES
- IMPROVE SKIN BARRIER
- INCREASE SKIN HYDRATION
- INCREASE SKIN ELASTICITY
- IMPROVE SKIN FIRMNESS

* THIRD-PARTY CLINICAL TRIAL OVER 8 WEEKS WITH 30 FEMALE PARTICIPANTS AGES 35-70 YEARS

A close-up photograph of a woman wearing the light blue HigherDOSE Red Light Face Mask. The mask is illuminated from within, casting a soft red glow over her face. The brand name 'HIGHERDOSE' is printed in white on the forehead area of the mask. The woman's eyes are visible through the mask's cutouts, and her lips are also visible through a larger opening.

A woman wearing the light blue HigherDOSE Red Light Face Mask, which emits a red glow, highlighting its clinical benefits for skin.



A woman wearing the light blue HigherDOSE Red Light Face Mask, with statistics indicating high user satisfaction regarding skin firmness, reduced fine lines, and ease of integration into skincare routines.



A clinical comparison image showing a reduction in fine lines and wrinkles around the eye area after 8 weeks of use.



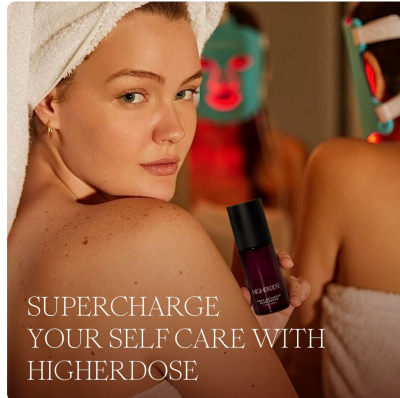
A clinical comparison image showing a reduction in fine lines and wrinkles on the forehead area after 8 weeks of use.



A man wearing the light blue HigherDOSE Red Light Face Mask, emitting a red glow, in a bathroom setting.



The HigherDOSE Red Light Face Mask displayed with various beauty award badges.



A woman holding a bottle of HigherDOSE Glow Serum, with another person wearing the mask in the background, promoting self-care.

Videos

No official product videos from the seller are available for embedding based on current criteria.

