



Manuals.plus /

- › Belife /
- › Belife Outlet HEPA Filter Replacement User Manual

## Belife BVC11/BVC11A/BVC12/BVC11C

# Belife Outlet HEPA Filter Replacement User Manual

For Belife Cordless Vacuum Cleaners Models BVC11, BVC11A, BVC11C, BVC12

## 1. PRODUCT OVERVIEW

---

This manual provides instructions for the Belife Outlet HEPA Filter, designed as a replacement part for Belife Cordless Vacuum Cleaner models BVC11, BVC11A, BVC11C, and BVC12. This filter is washable and reusable, contributing to the sustained performance and air quality output of your vacuum cleaner.

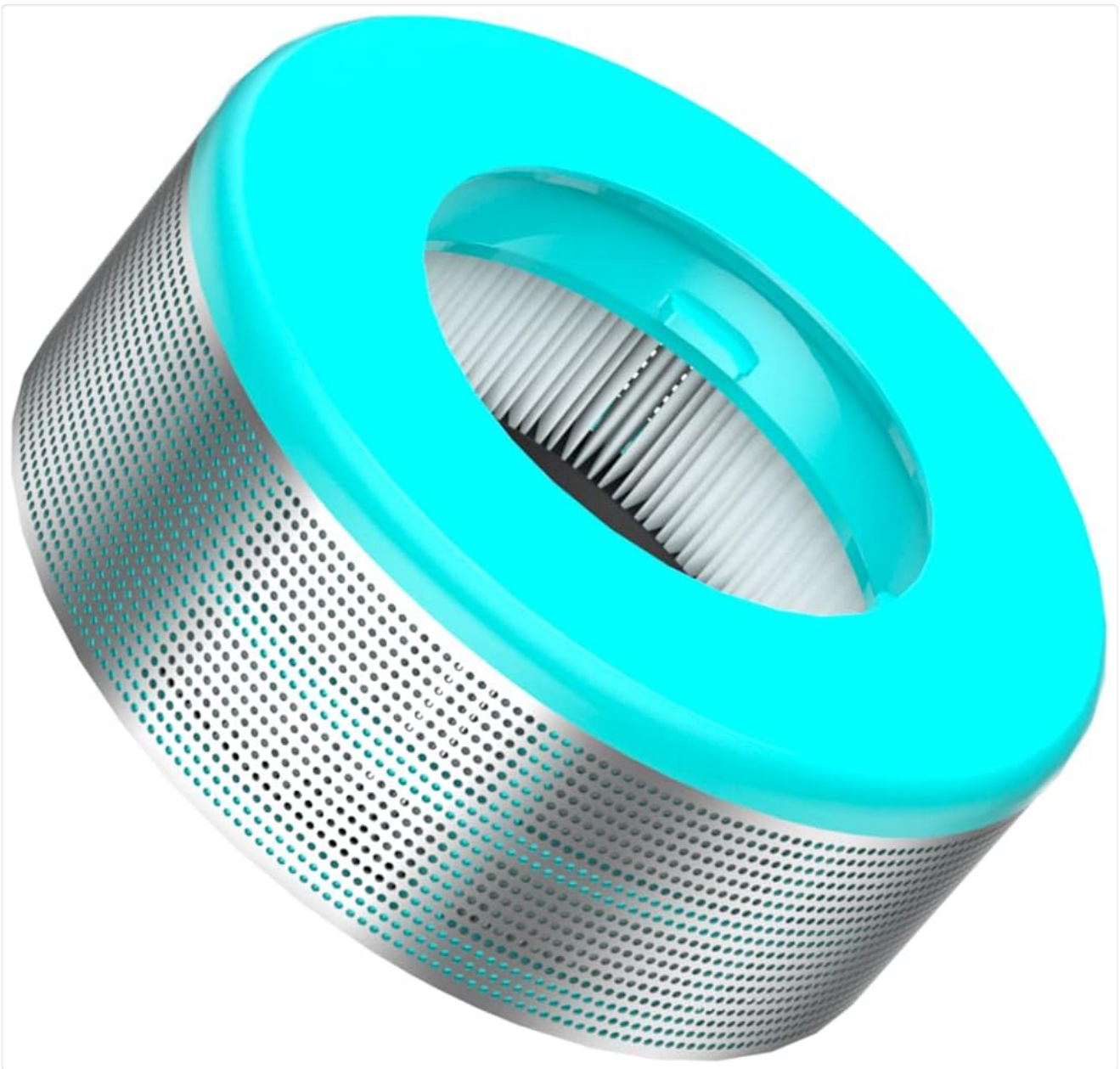


Image: The Belife Outlet HEPA Filter, a cylindrical filter with a teal top and perforated metallic sides.

The HEPA filter is a critical component of your vacuum's filtration system, capturing fine dust particles and allergens to ensure cleaner air is expelled. Regular replacement and maintenance are essential for optimal suction and air purification.

## 2. COMPATIBILITY AND INSTALLATION

---

This replacement filter is specifically designed for the following Belife Cordless Vacuum Cleaner models:

- Belife BVC11
- Belife BVC11A
- Belife BVC11C
- Belife BVC12

## For BVC11 / BVC11C / BVC12 Cordless Vacuum Cleaners



For BVC11



For BVC11C



For BVC12

Image: Visual representation of the Belife Outlet HEPA Filter's compatibility with BVC11, BVC11C, and BVC12 cordless vacuum cleaners, showing the filter in context with each model.

### Installation Steps:

1. **Power Off:** Ensure your Belife cordless vacuum cleaner is turned off and unplugged from any charging source before beginning installation.
2. **Locate Filter Compartment:** Refer to your vacuum cleaner's original user manual to locate the air outlet filter compartment. This is typically at the rear or side of the main motor unit.
3. **Remove Old Filter:** Gently twist or pull the old HEPA filter to remove it from its housing. Dispose of the old filter responsibly if it is no longer reusable.
4. **Prepare New Filter:** If the new filter is washable, ensure it is completely dry before installation.
5. **Insert New Filter:** Align the new Belife Outlet HEPA Filter with the compartment and push or twist it into place until it is securely seated. Ensure a snug fit to prevent air leakage.
6. **Close Compartment:** Close the filter compartment cover securely.

### 3. USAGE GUIDELINES

Once installed, the HEPA filter works automatically as part of your vacuum cleaner's 6-stage high-efficiency filtration system. It is designed to capture microscopic particles, including dust mites, pet dander, pollen, and other allergens, ensuring cleaner exhaust air.



Image: An exploded diagram illustrating the 6-stage high-efficiency filtration system of the Belife vacuum cleaner, highlighting components like the H12 outlet HEPA, stainless cover, visible polymer filter (HEPA), multi-cone cyclone, stainless filter, and cyclone filter.

For optimal performance, it is recommended to replace the air outlet filter once every 3-6 months. This frequency may vary depending on usage intensity and household environment (e.g., presence of pets, high dust levels).

#### 4. MAINTENANCE

The Belife Outlet HEPA Filter is washable and reusable, extending its lifespan and maintaining filtration efficiency. Follow these steps for cleaning:

1. **Remove Filter:** Carefully remove the HEPA filter from the vacuum cleaner as described in the installation steps.
2. **Rinse:** Rinse the filter under cool, running water. Gently tap the filter to dislodge trapped dust and debris. Do not use detergents or hot water, as this can damage the filter material.
3. **Dry Completely:** This is a critical step. Allow the filter to air dry completely for at least 24 hours before reinstallation.

Ensure it is placed in a well-ventilated area away from direct sunlight or heat sources. **Do not use a dryer or other heating devices to speed up drying, as this can deform or damage the filter.** The filter must be absolutely dry before being placed back into the vacuum cleaner to prevent mold growth and damage to the vacuum's motor.

4. **Reinstall:** Once completely dry, reinstall the filter into your vacuum cleaner.

Regular cleaning, typically once a month or as needed based on usage, will help maintain the vacuum's suction power and the filter's effectiveness.

## 5. TROUBLESHOOTING

---

If you experience issues with your vacuum cleaner's performance after filter replacement or during use, consider the following:

- **Reduced Suction Power:**
  - **Clogged Filter:** The filter may be dirty and require cleaning or replacement. Even if recently cleaned, ensure it was completely dry before reinstallation.
  - **Improper Installation:** Check that the filter is securely seated in its compartment, forming an airtight seal.
  - **Other Blockages:** Inspect the vacuum's hose, brush roll, and dustbin for any other blockages that might be affecting suction.
- **Unusual Odor from Vacuum:**
  - **Damp Filter:** If the filter was reinstalled while still damp, it could lead to mold or mildew growth and an unpleasant odor. Remove, clean, and thoroughly dry the filter.
  - **Dirty Dustbin:** Empty and clean the dustbin regularly.
- **Dust Escaping Vacuum:**
  - **Damaged Filter:** Inspect the filter for any tears or damage. A damaged filter will not effectively trap particles and should be replaced.
  - **Improper Installation:** Ensure the filter is correctly and tightly installed.

If troubleshooting steps do not resolve the issue, please contact Belife customer support.

## 6. SPECIFICATIONS

---

| Feature                 | Detail   |
|-------------------------|--|
| Brand                   | Belife   |
| Special Feature         | HEPA   |
| Filter Type             | HEPA Filter  |
| Compatibility           | Belife BVC11, BVC11A, BVC11C, BVC12 Cordless Vacuum Cleaners |
| Washable                | Yes  |
| Reusable                | Yes  |
| Recommended Replacement | Every 3-6 months   |
| Product Dimensions      | 1.57 x 1.57 x 1.57 inches                                    |
| Item Weight             | 2.08 ounces  |
| Model Name (Internal)   | bvc (Item model number: V11)                                 |

## 7. WARRANTY

---

The product comes with a limited warranty. For detailed information regarding the warranty period, coverage, and terms, please refer to the official Belife website or contact Belife customer support directly. Please retain your proof of purchase for warranty claims.

## 8. CUSTOMER SUPPORT

---

For any questions, technical assistance, or support regarding your Belife Outlet HEPA Filter or Belife vacuum cleaner, please contact Belife customer service.

You can visit the official Belife Store for more information and contact options: [Belife Official Store](#)